

# Strategy:

*9/20 Trade*

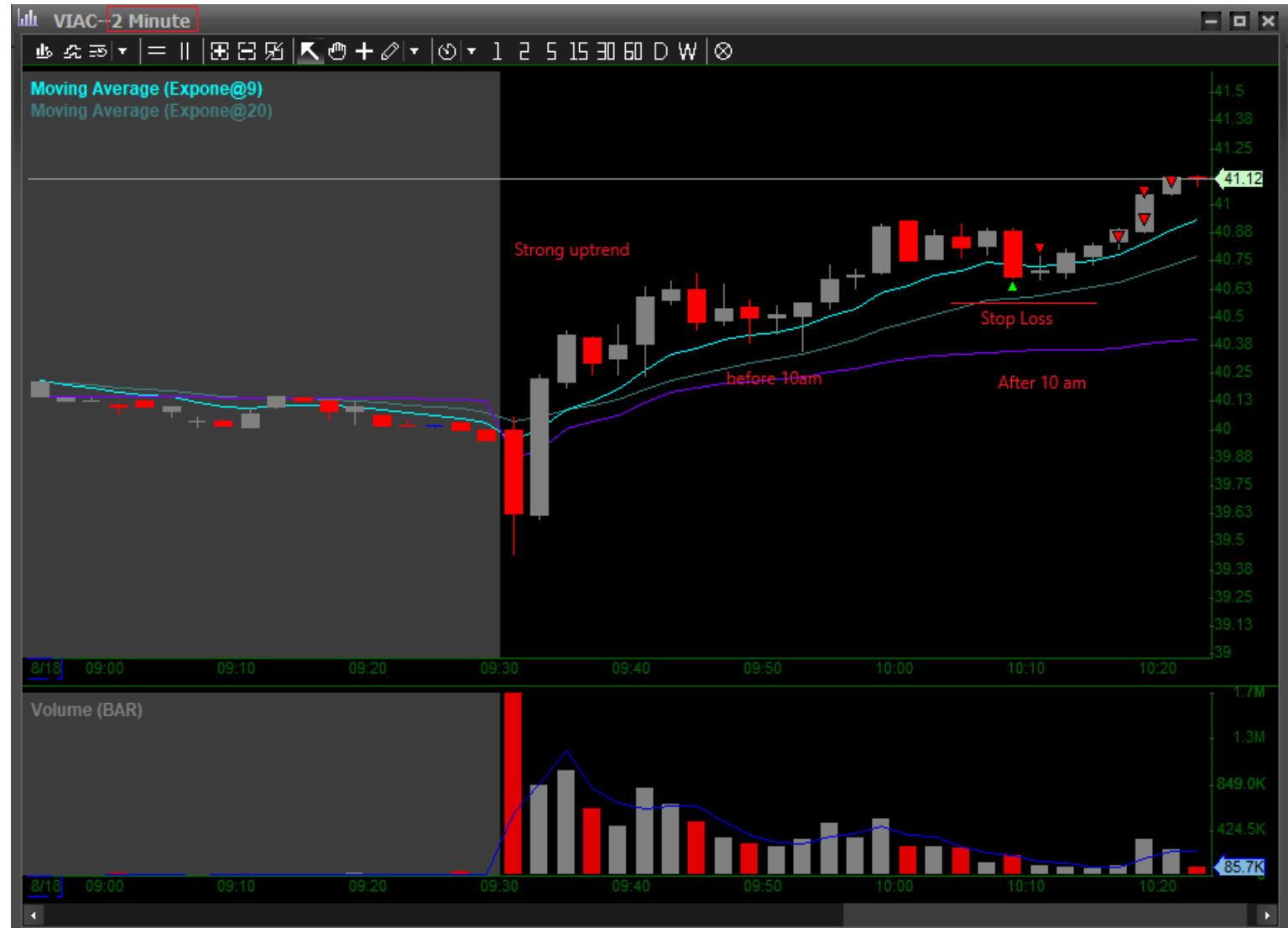
# Stock Selection

- Stock in Play
- Strong Move at the Open
- Stocks near All Time High



# Setup Identification

- Too Extended to buy on 1-min chart
- Usually pulls back on 1-min chart is being bought back toward high of the day
  - Sign of strength
- TradeBook works between 10:00am – 10:30am (ET)



# Trade Execution

- Entry at or near 20 EMA on 2-min chart
- Stop loss, a significant break below 20 EMA on 2-min chart
- Profit targets:
  - **First target:** 9 EMA on 2-min chart
  - **Second target:** near high of the day
  - **Further targets:** break of high of day



# Consideration Notes

- No stocks with halt on the way up or down
- No low float stocks (below 20 million shares float)
- No trading 9/20 after 11:00am (ET)



# Example



**July 9 2021,  
AAPL at all time  
high.**

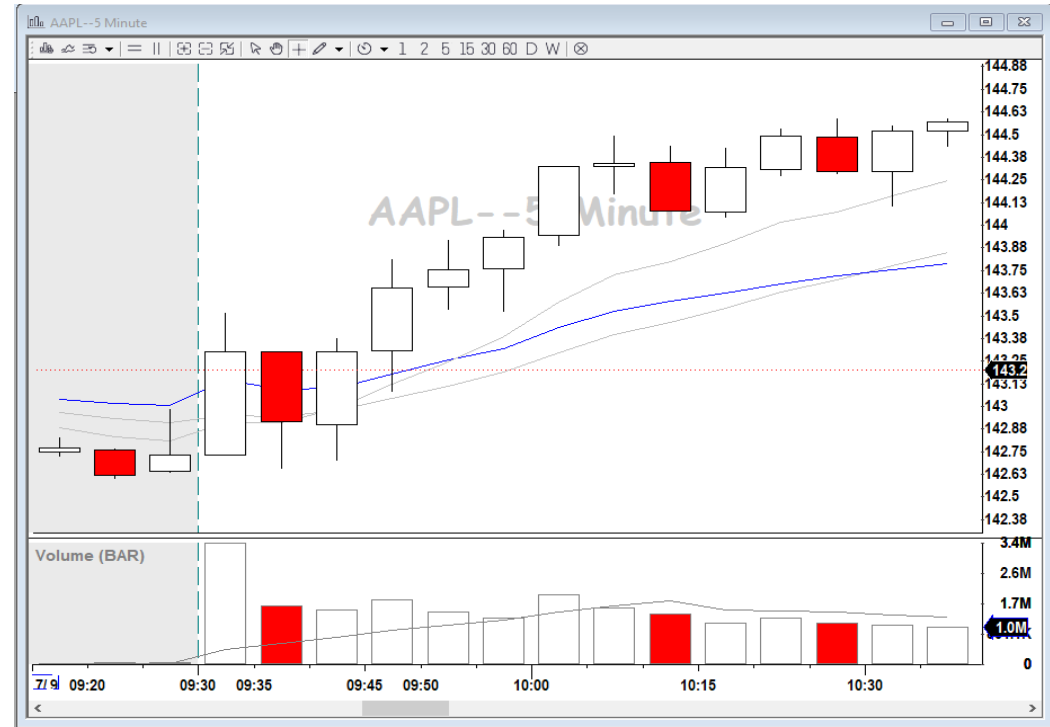
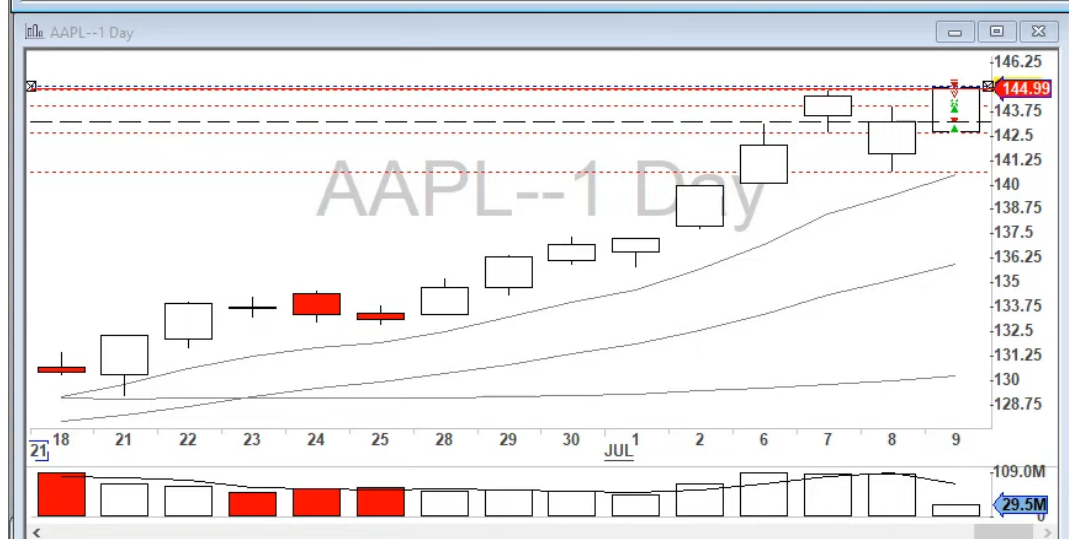
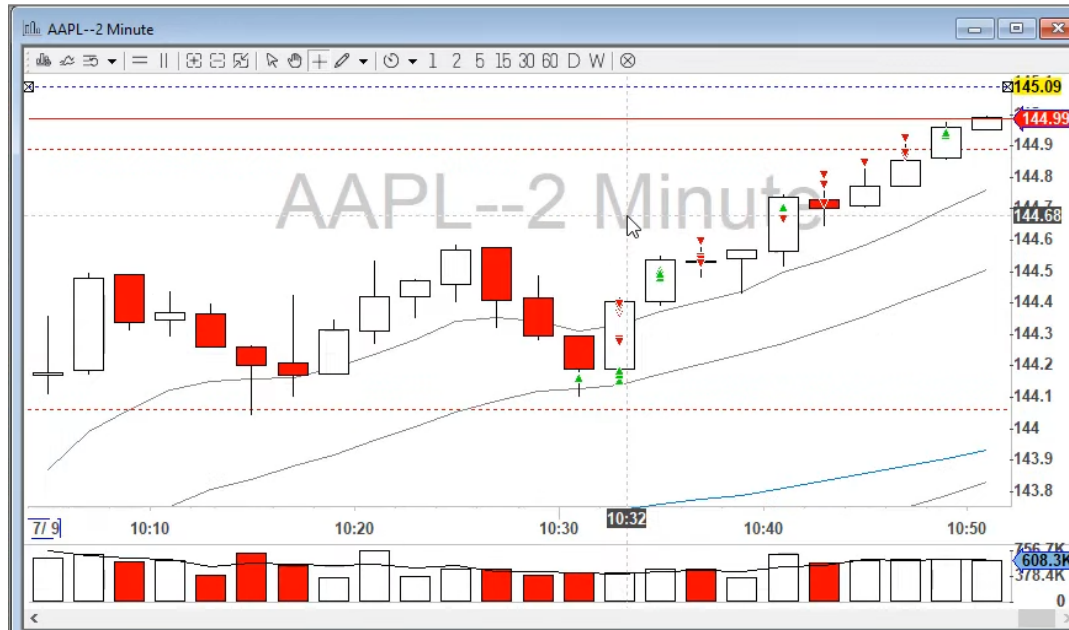
# Example



**In 1-min chart,  
we lost moving  
averages, but  
should we  
short it?**

**Remember it is  
a strong stock.**

# Example



# Example

## A+ Setup



## Not A+ Setup

