

Strategy: Titan Territory

DISCLAIMER

Tradingterminal.com employees, contractors, shareholders and affiliates, are **NOT an investment advisory service, a registered investment advisor or a broker-dealer** and does not undertake to advise clients on which securities they should buy or sell for themselves.

You understand that **NO content published as part of the Trading Terminal and its Website constitutes a recommendation** that any particular investment, security, portfolio of securities, transaction or investment strategy is suitable for any specific person.

You further understand that **none of the creators or providers of our Services or their affiliates will advise you personally** concerning the nature, potential, value or suitability of any particular investment, security, portfolio of securities, transaction, investment strategy or other matter.

Stock Selection

- Pre-market volume over 500k (preferably over 1M)
- Average daily volume over 1M
- ATR over 2
- Float over 50M
- Price over \$10
- RVOL 1.0/100%+
- Titan Territory within 1ATR of opening price
- Titan Territory (i.e. level/area selection) on the Weekly, Daily, or 60min chart
 - **TT Range:** Clear range where buyers and sellers have been holding the price (*image 1*)
 - **TT HH/LH:** Previous higher high (HH) in an uptrend / lower high (LH) in a downtrend (*image 2*)
 - **TT CHoCH:** (change of character) i.e break of support/resistance for a change in trend (*image 3*)
 - **TT SD:** Supply drop (price moves down quickly)/demand spike (price moves up quickly) (*image 4*)
- Bonus:
 - Stock has a fresh news catalyst within the last 3 days
 - R4, R3, S3, & S4 as confluence in the area (i.e. algo participation)

Image 1: TT Range



Image 2: TT HH/LH

Amazon.com, Inc. · 1D · NASDAQ USD O237.14 H237.95 L232.22 C234.64 -2.43 (-1.03%)

Vol 32.01M



USD



Image 3: TT CHoCH

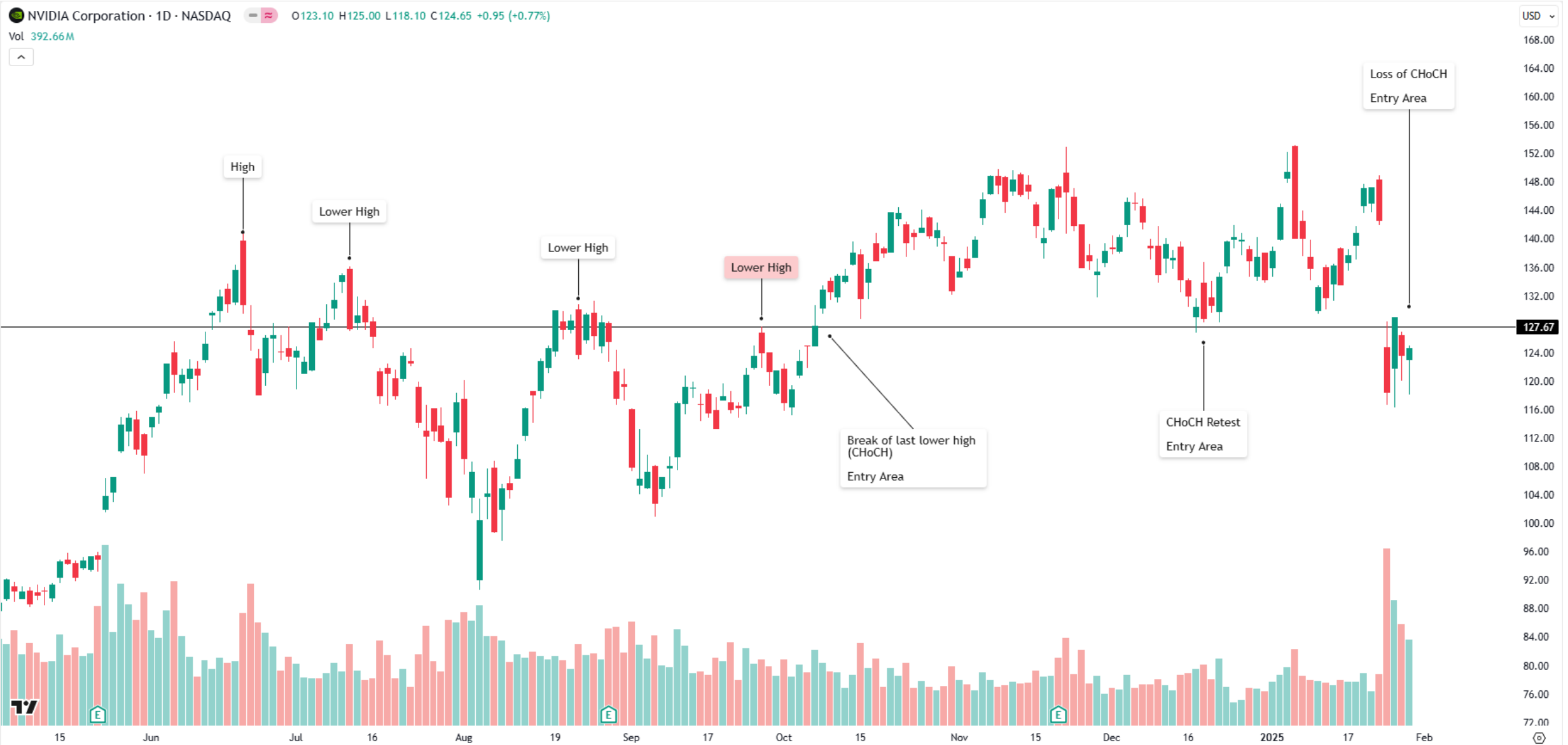


Image 4: TT SD (Supply/Demand)

Advanced Micro Devices Inc · 1h · NASDAQ

O118.80 H119.14 L118.80 C119.05 +0.27 (+0.23%)

Vol 5.46K



USD

136.00

135.00

134.00

133.00

132.00

131.00

130.00

129.00

128.00

127.00

126.00

125.00

124.00

123.00

122.00

121.00

120.00

119.00

118.00

117.00

116.00

115.00

114.00

113.00

112.00



Setup Identification

- BID x ASK size imbalance (*image 5*)
- Level 2 liquidity in the direction of the trade (i.e. large orders laddering to the downside (short) / topside (long))
- Tape signals:
 - Long = BID/ASK stepping up
 - Short = BID/ASK stepping down
- Candlestick Patterns:
 - 3 Bar Play (Continuation & Reversal) (*image 6 & 7*)
 - Bullish/Bearish Engulfing (*image 8*)
 - Breakout Candle (*minimum 3 consolidation candles) (*image 9*)
 - Pin Bar (*image 10*)
 - ABCD (*image 11*)
- **All signals (tape or pattern MUST be confirmed by volume)**
 - Volume shifting/increasing in the direction of the trade w/ low volume during pullbacks & pauses

Image 5: BID x ASK Size Imbalance



Image 6: Three Bar Play (Continuation)

Apple Inc · 1 · NASDAQ 📉 O234.03 H234.03 L233.95 C233.95 -0.03 (-0.01%)

Vol 387



USD

236.50

236.00

235.50

235.00

234.50

234.00

233.50

233.04

232.50

232.00

231.50

231.00

230.50

230.00

229.50

229.00

228.50

228.00

🔄



Image 7: Three Bar Play (Reversal)

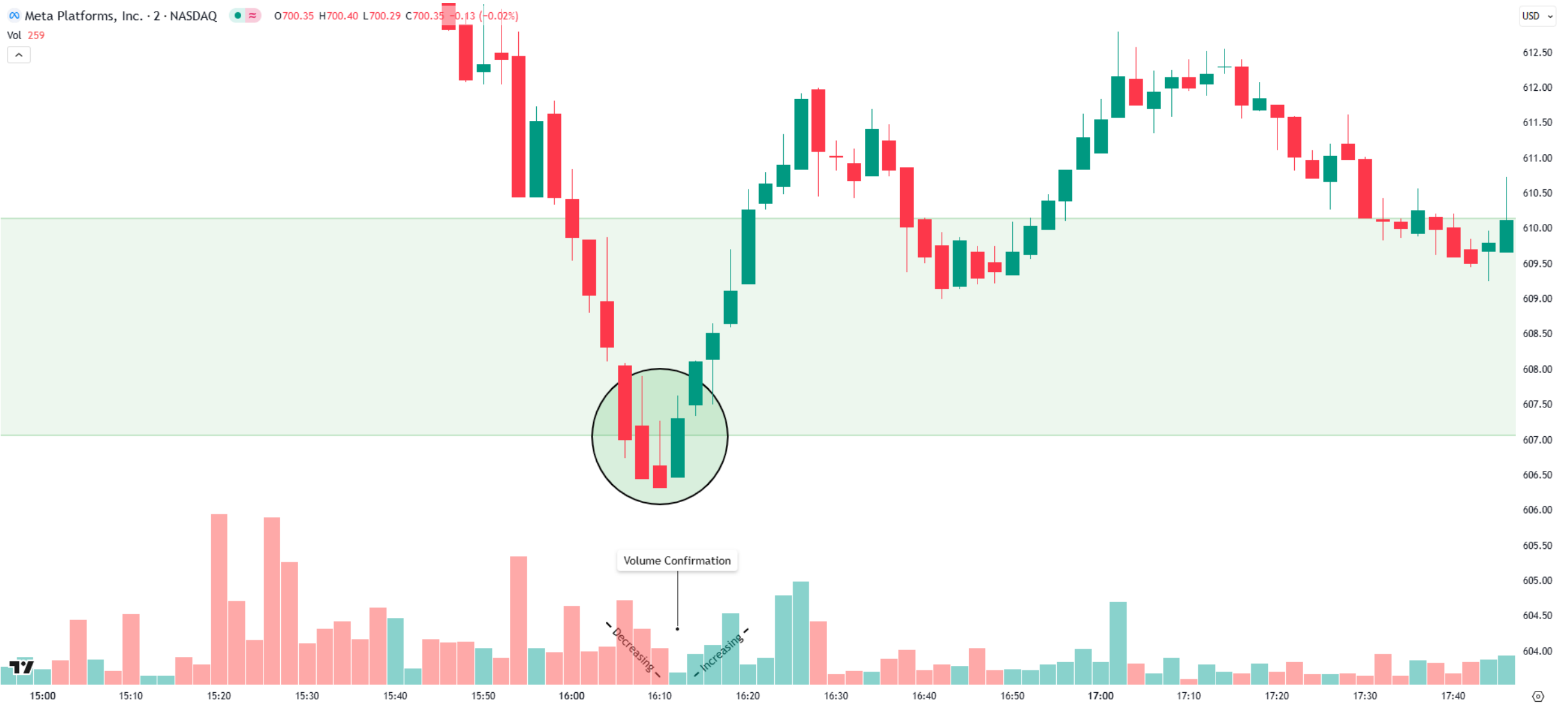


Image 8: Bullish/Bearish Engulfing Candle



Image 9: Breakout Candle

NVIDIA Corporation - 5 · NASDAQ ● ● O125.40 H125.84 L125.25 C125.74 +0.34 (+0.27%)

Vol 244.1K



USD

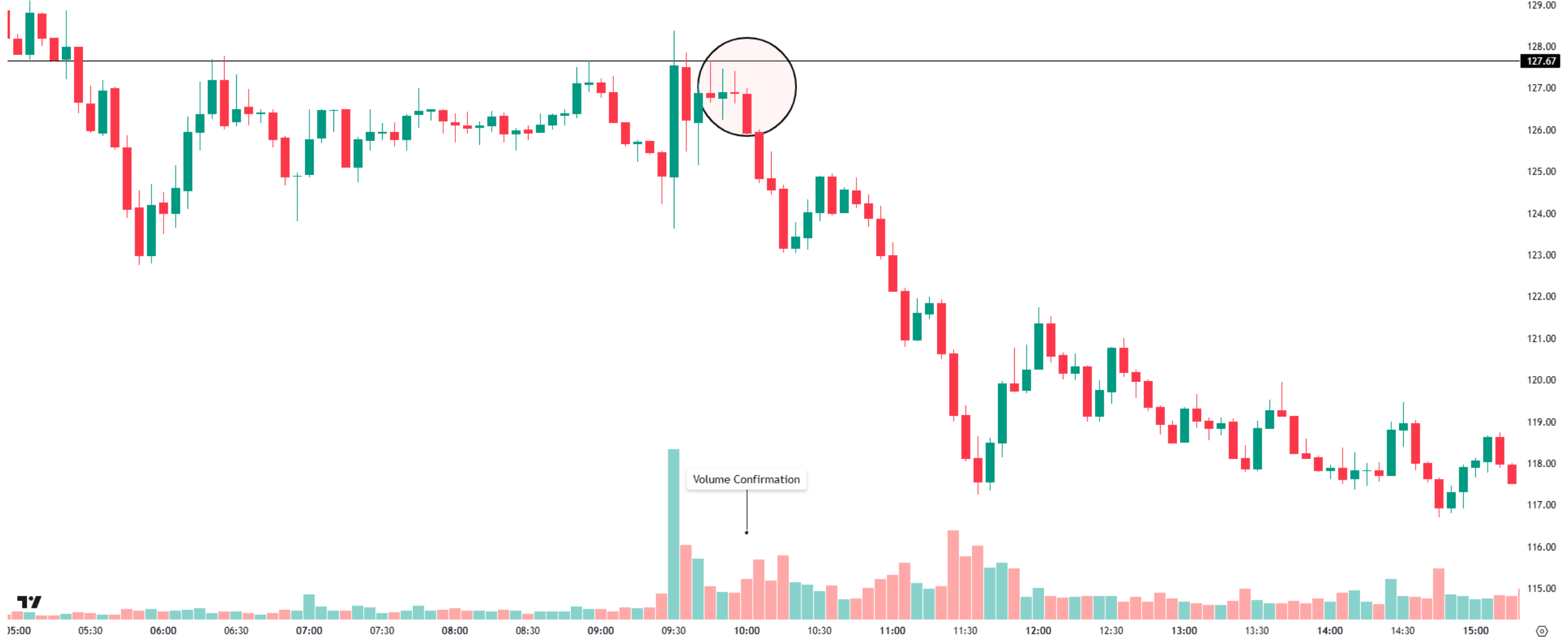


Image 10: Pin Bar



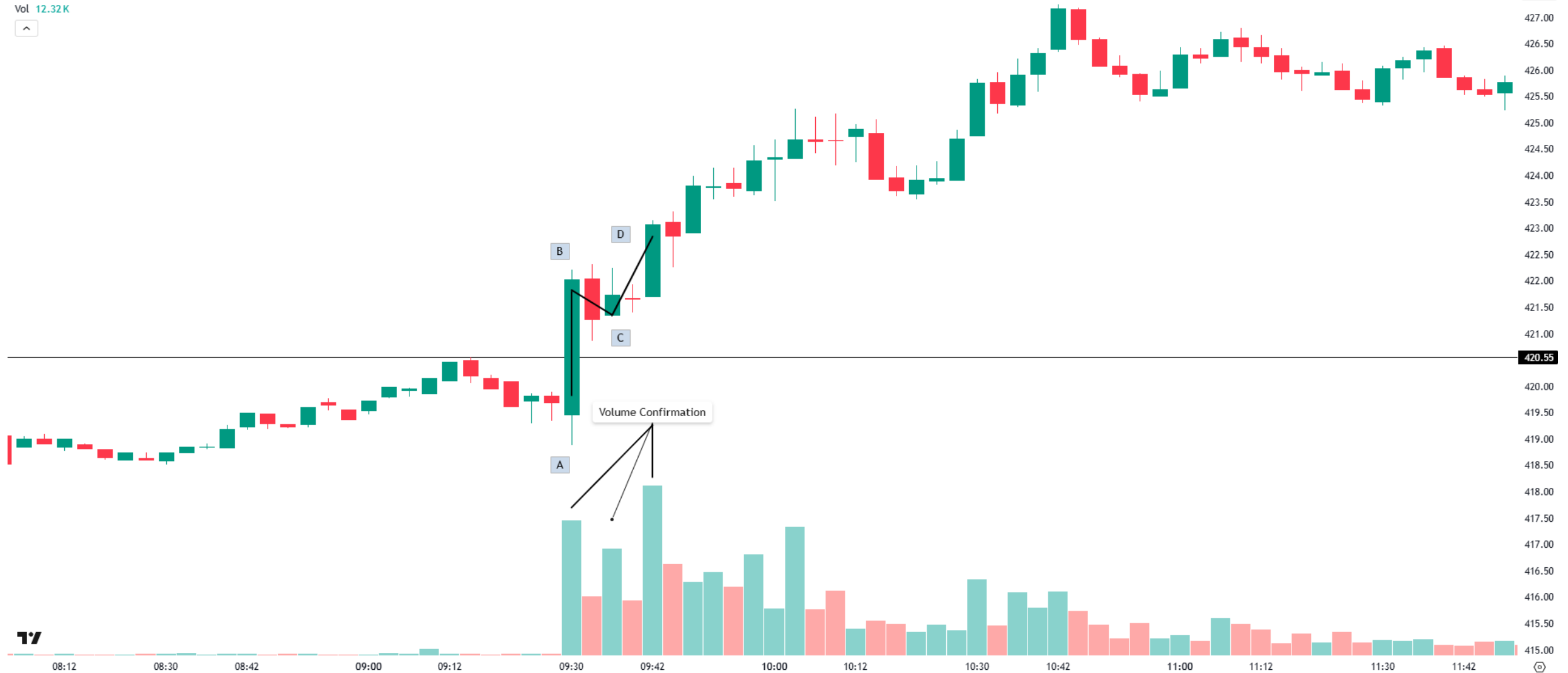
Image 11: ABCD

Microsoft Corp. - 3 - NASDAQ ● ● O417.46 H417.75 L417.30 C417.73 +0.19 (+0.05%)

Vol 12.32K



USD ▾



Trade Execution

- **Entry:**

- Near a large order *or* at the trigger candle when using a pattern

- **Stop Loss:**

- Above/below the most recent swing high/low in relation to the large order *or* above/below the trigger candle when using a pattern

- **Target:**

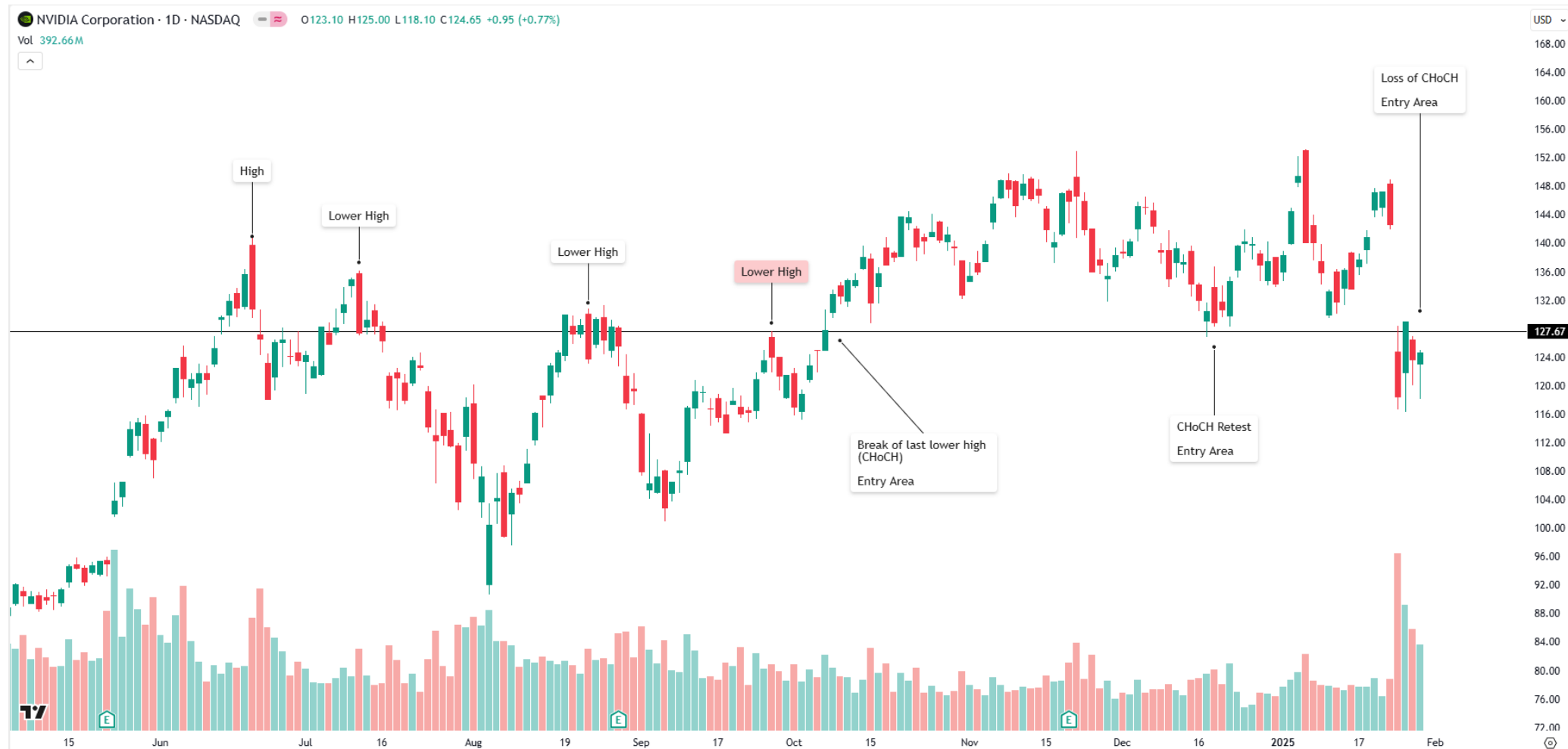
- Intraday support/resistance, other TT levels/areas, large orders

Consideration Notes

- Choose levels/areas that stand out (i.e. **don't hunt for a level** – if it's not there, move on).
- The more touches to a level, the stronger it will be (more buyer/seller participation).
- Levels are meant to be traded as “areas”. Ideally the trade sets up close to the level, however, once price nears the level, begin looking for setup criteria (i.e. large orders, volume signals, patterns, etc.).
- Patterns can be played on any time frame, whichever time frame is chosen needs to be the same time frame used for the stop loss. (i.e. if pattern sets up on a 5-minute chart, use the 5-minute chart for the stop loss)
- Keep in mind the overall bigger picture sentiment of both the market and the selected stock i.e. weakness, look for short setups / strength, look for long setups

Trade Example Pt.1 The Bigger Picture

- TT @ \$127.67 area on the daily chart



Trade Example Pt. 2: Execution

- TT @ \$127.67
- LARGE SELLER appears @ \$127.50 near TT
- ENTRY #1 below large seller
- STOP #1 above previous swing high
- ENTRY #2 at trigger candle
- STOP #2 above trigger candle
- First target intraday support/resistance (i.e LOD area)
- Additional targets: TT levels/areas & large orders in the direction of the trade

