

“1-to-10” Strategy

Stock Selection

- Only trade large-cap stocks with high institutional volume
- >90% RVOL
- Long or short



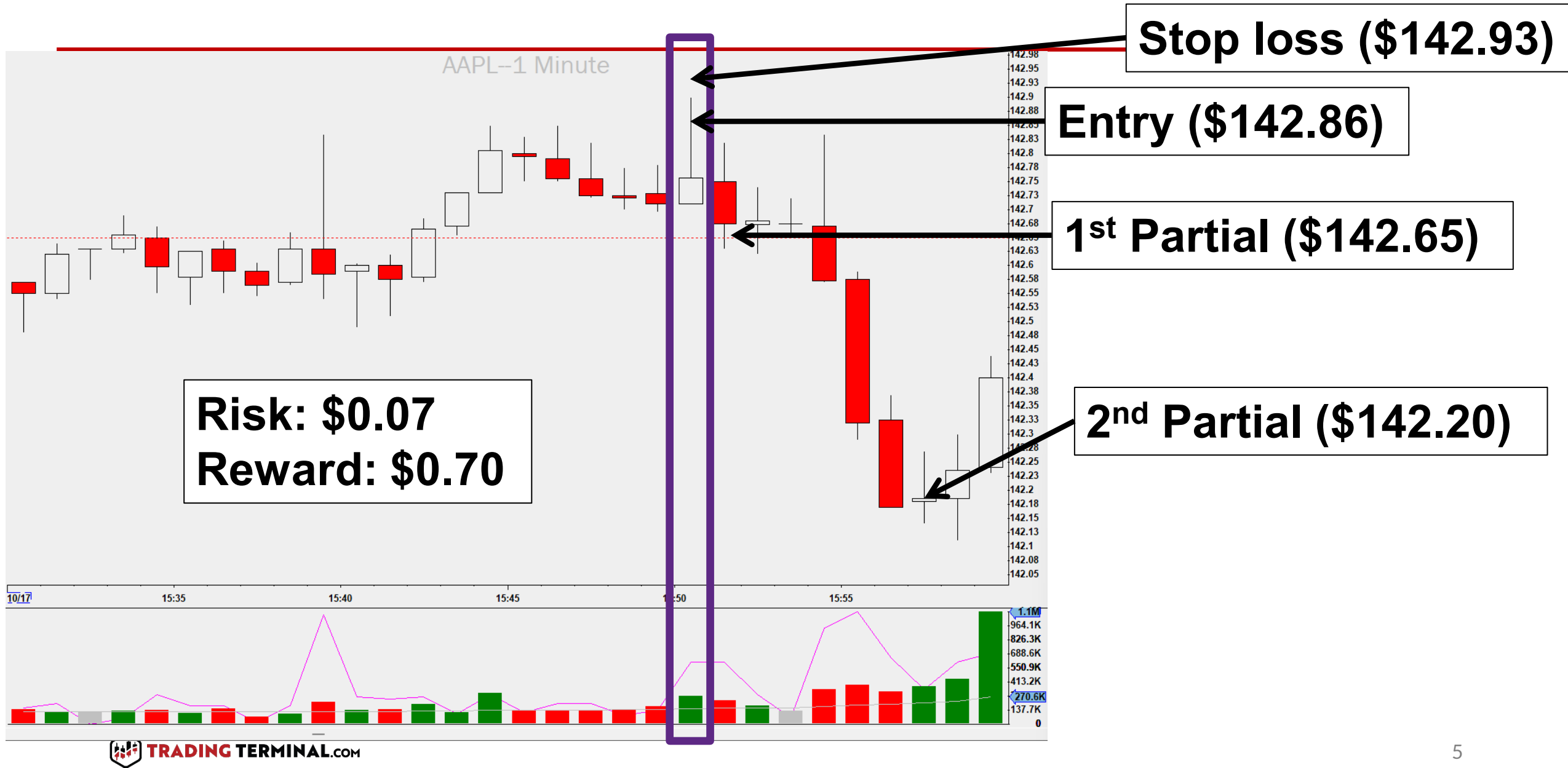
Setup Identification

- Works best on stocks with a slight directional trend in the previous 15 minutes
 - Can be tried on stocks with no trend
 - **DO NOT play on stock with a strong trend!**
- Slightly increasing volume at 3:48 and 3:49 is good, but...not too much volume!
 - 1.5-2x previous average is good
- Too much volume or movement before 3:50 is an immediate ABORT signal

“1-to-10” – Setup Identification (cont’d)

- At exactly 3:50pm you want to see:
 1. 2-4x the average volume of the previous 10 minutes in the first 30 seconds
 2. A strong move in one direction
(>2x the previous 5-min average range)
 3. Faltering of the directional movement for 10-15 seconds

Trade Execution



Trade Execution

AMD-1 Minute



Risk: \$0.05
Reward: \$0.51

Stop loss (\$68.31)

Entry (\$68.26)

1st Partial (\$68.10)

All out (\$67.75)

Consideration Notes

- Quick decision making is important
- Only trade when the conditions are perfect