

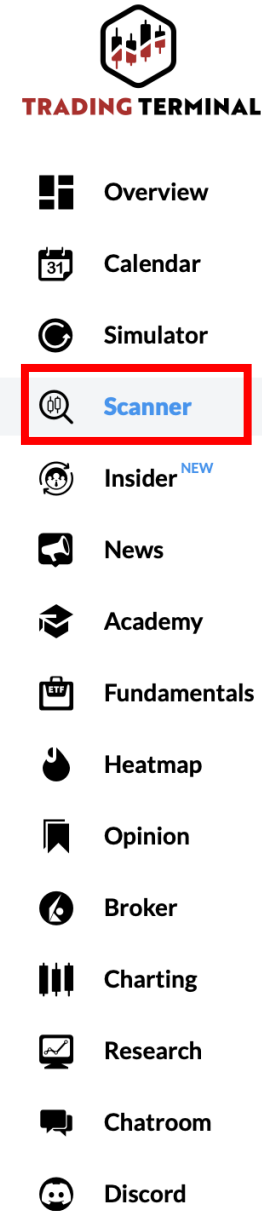
Strategy: 5-Min Open Range Breakout

Stock Selection

- Mid to Large Float Stocks
- Significant Pre-Market & opening volume.
- Usually Stocks that Gap Up/Down provide a good selection of stocks

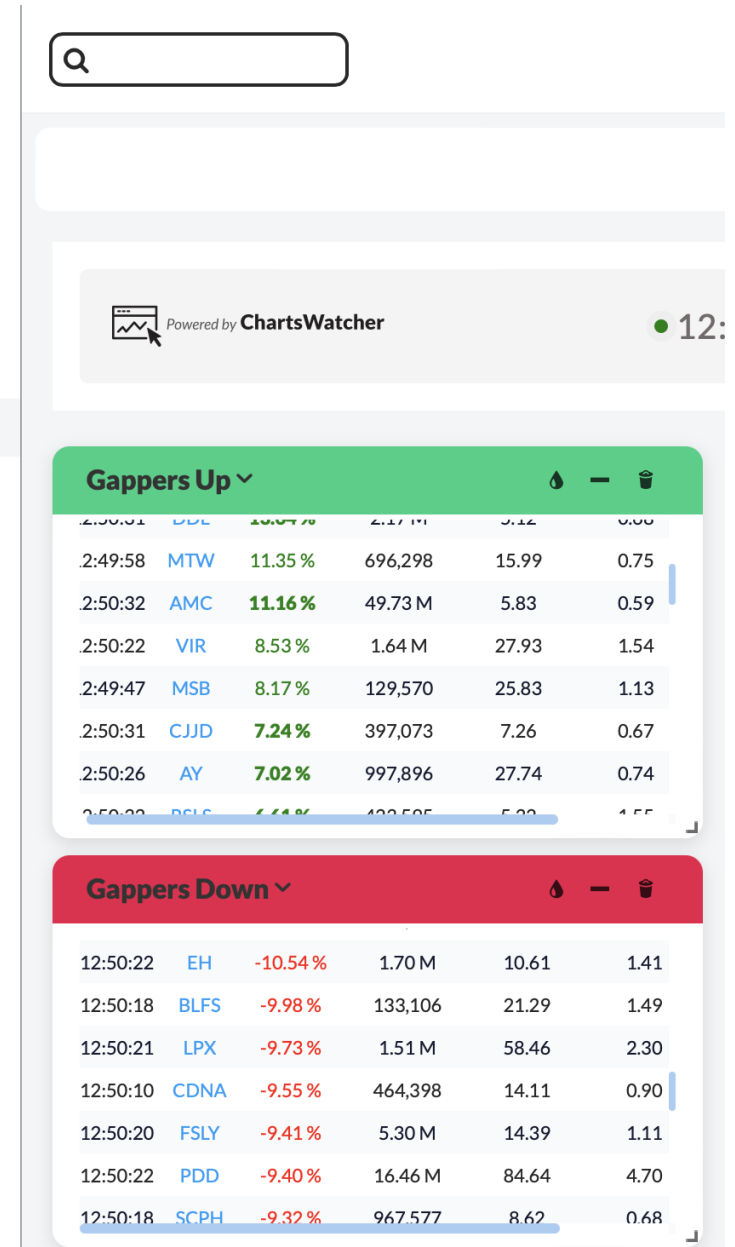
Preferably:

- Opening Range should be lower than the ATR.
- Breaking through a Technical Level.



TRADING TERMINAL

- Overview
- Calendar
- Simulator
- Scanner**
- Insider ^{NEW}
- News
- Academy
- Fundamentals
- Heatmap
- Opinion
- Broker
- Charting
- Research
- Chatroom
- Discord



Powered by **ChartsWatcher** 12:

Gappers Up

2:50:31	DDE	10.57%	2.17 M	5.12	0.80
2:49:58	MTW	11.35%	696,298	15.99	0.75
2:50:32	AMC	11.16%	49.73 M	5.83	0.59
2:50:22	VIR	8.53%	1.64 M	27.93	1.54
2:49:47	MSB	8.17%	129,570	25.83	1.13
2:50:31	CJJD	7.24%	397,073	7.26	0.67
2:50:26	AY	7.02%	997,896	27.74	0.74
2:50:22	DGFC	6.64%	422,505	5.22	1.55

Gappers Down

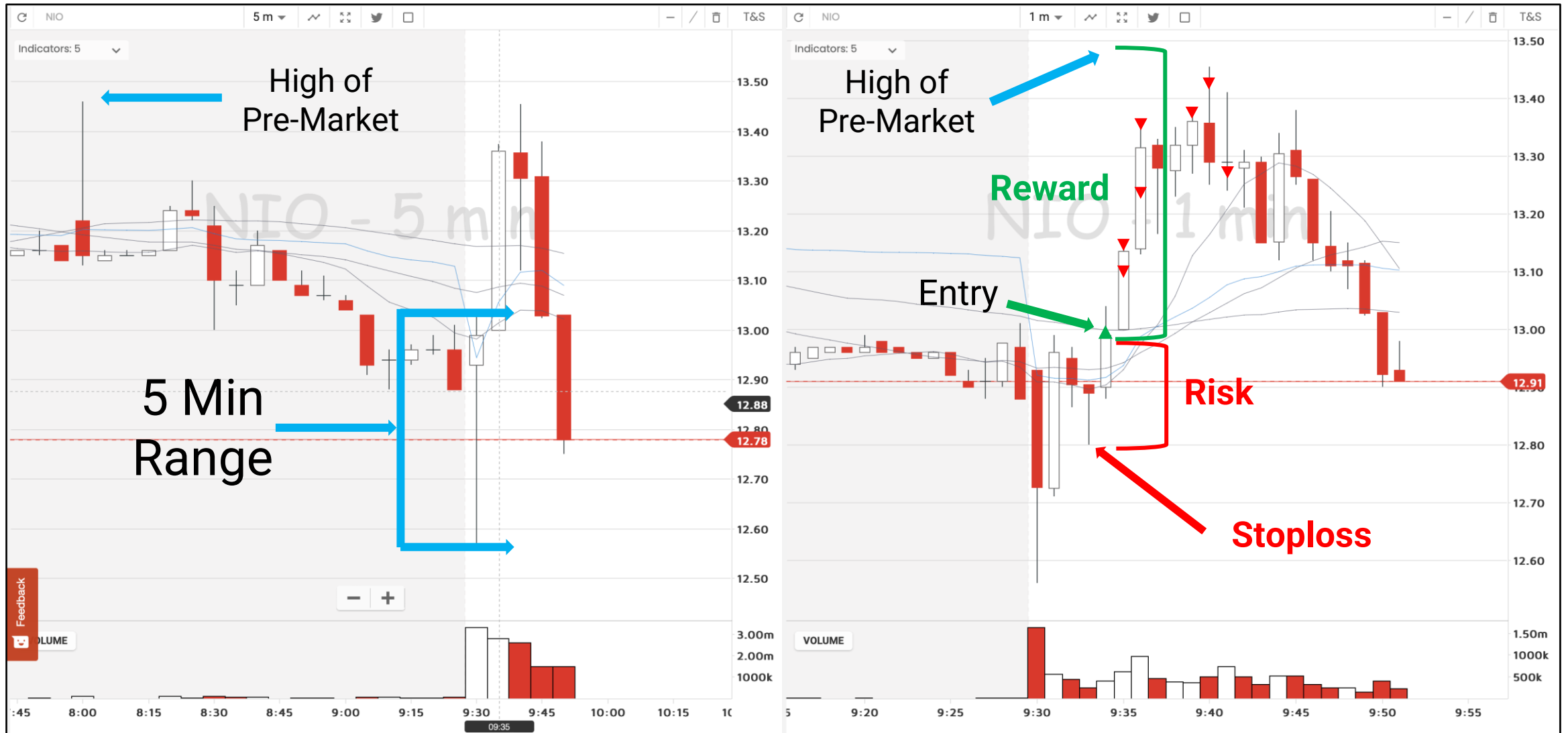
12:50:22	EH	-10.54%	1.70 M	10.61	1.41
12:50:18	BLFS	-9.98%	133,106	21.29	1.49
12:50:21	LPX	-9.73%	1.51 M	58.46	2.30
12:50:10	CDNA	-9.55%	464,398	14.11	0.90
12:50:20	FSLY	-9.41%	5.30 M	14.39	1.11
12:50:22	PDD	-9.40%	16.46 M	84.64	4.70
12:50:18	SCPH	-9.32%	967,577	8.62	0.68

Setup Identification

- Wait for the 5 min range to be created.
- Make sure the price action is not too extended from VWAP.
- Check the one minute for a pullback opportunities to VWAP



Trade Execution



Trade Execution (5 Min)

- **Enter:**

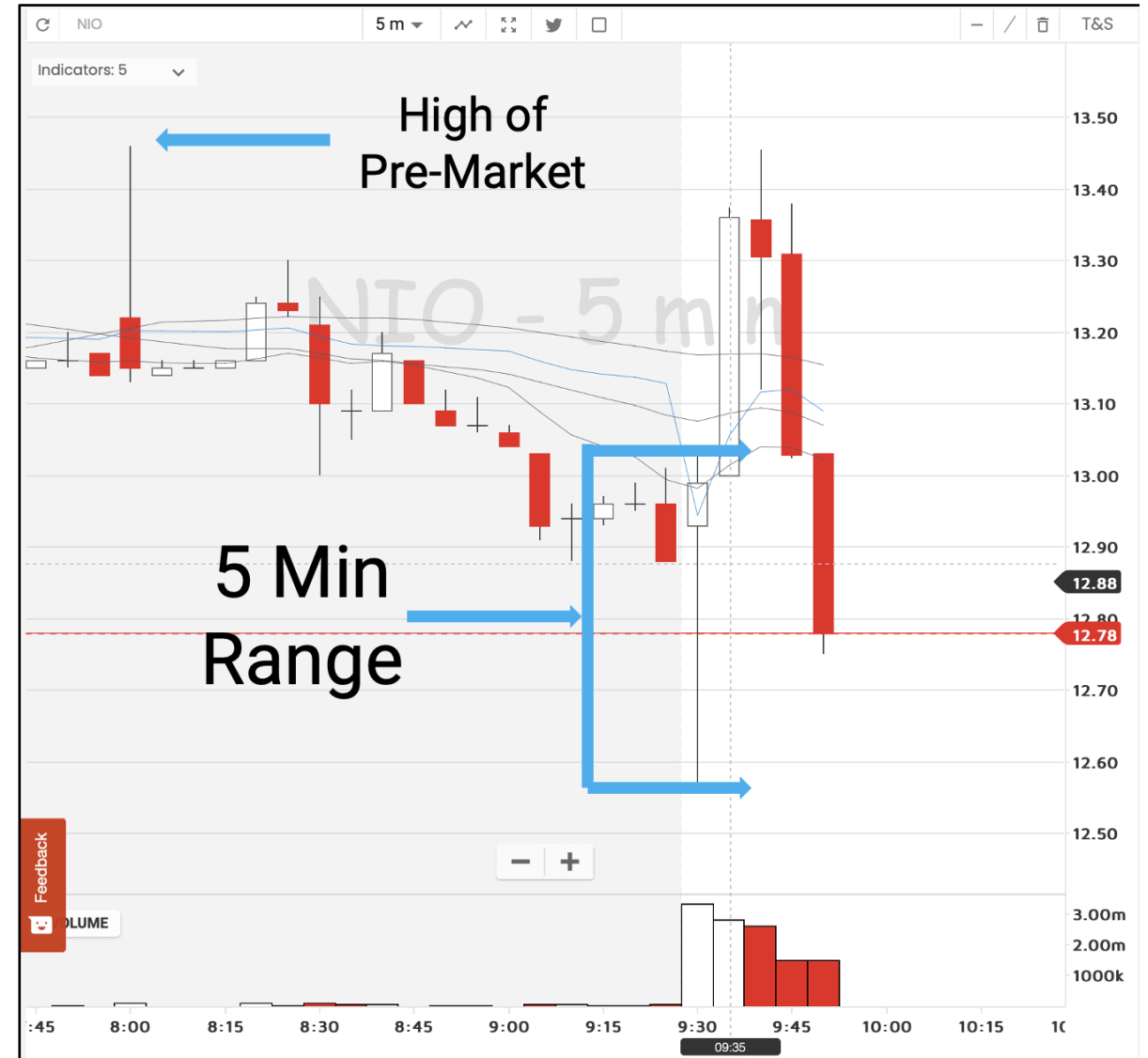
- At the break of the 5 min Range.
- Potential High (wick) of the candlestick, (Some use the close of candlestick)
- Check for high relative volume.
- Speed of Time and Sales for breakout
- Not too distant from VWAP
- If it's too far, is extended.

- **Stop loss:**

- Usually, the loss or break of VWAP.

- **Profit target:**

- High of pre-market if nearby
- Next important level such as Pivots
- Moving averages nearby
- Previous day close
- High & Low for the last 2 trading days.



Trade Execution (1 Min)

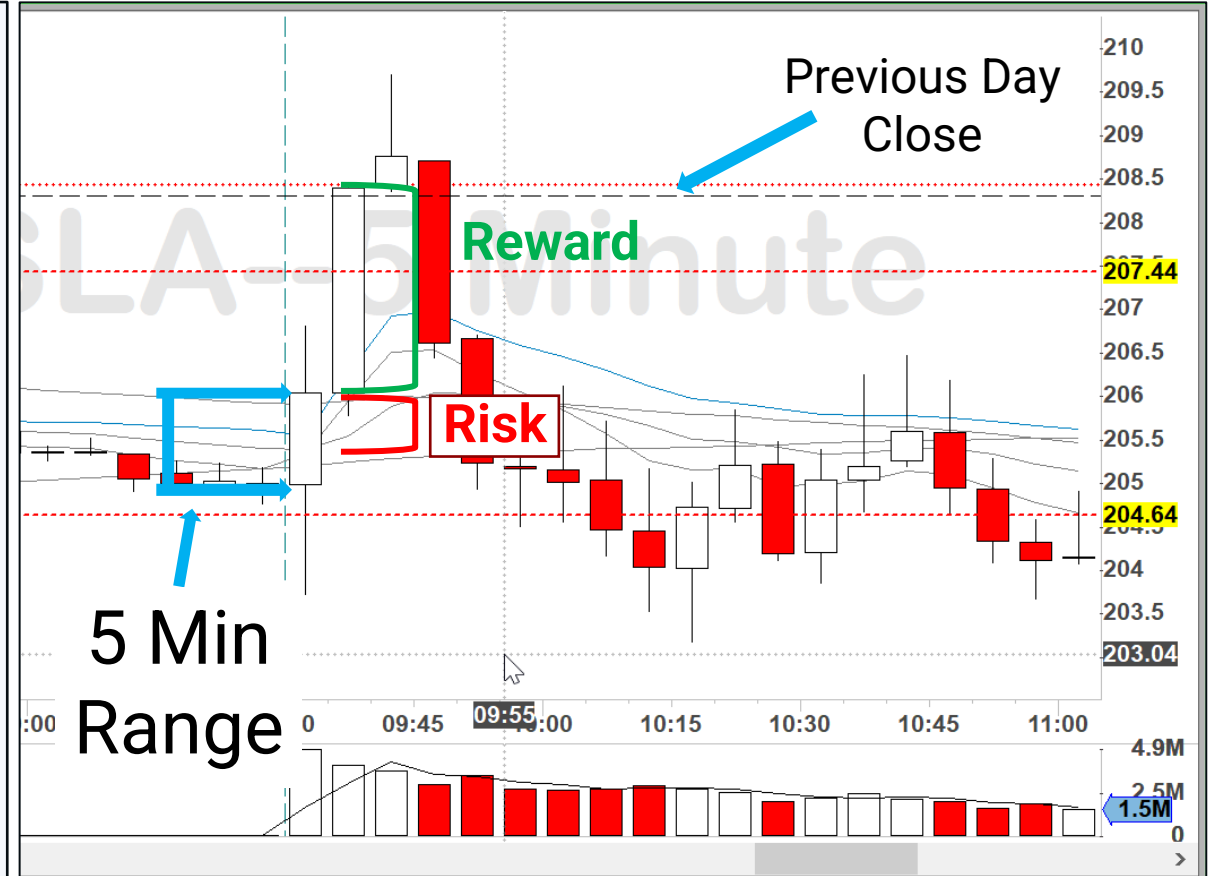
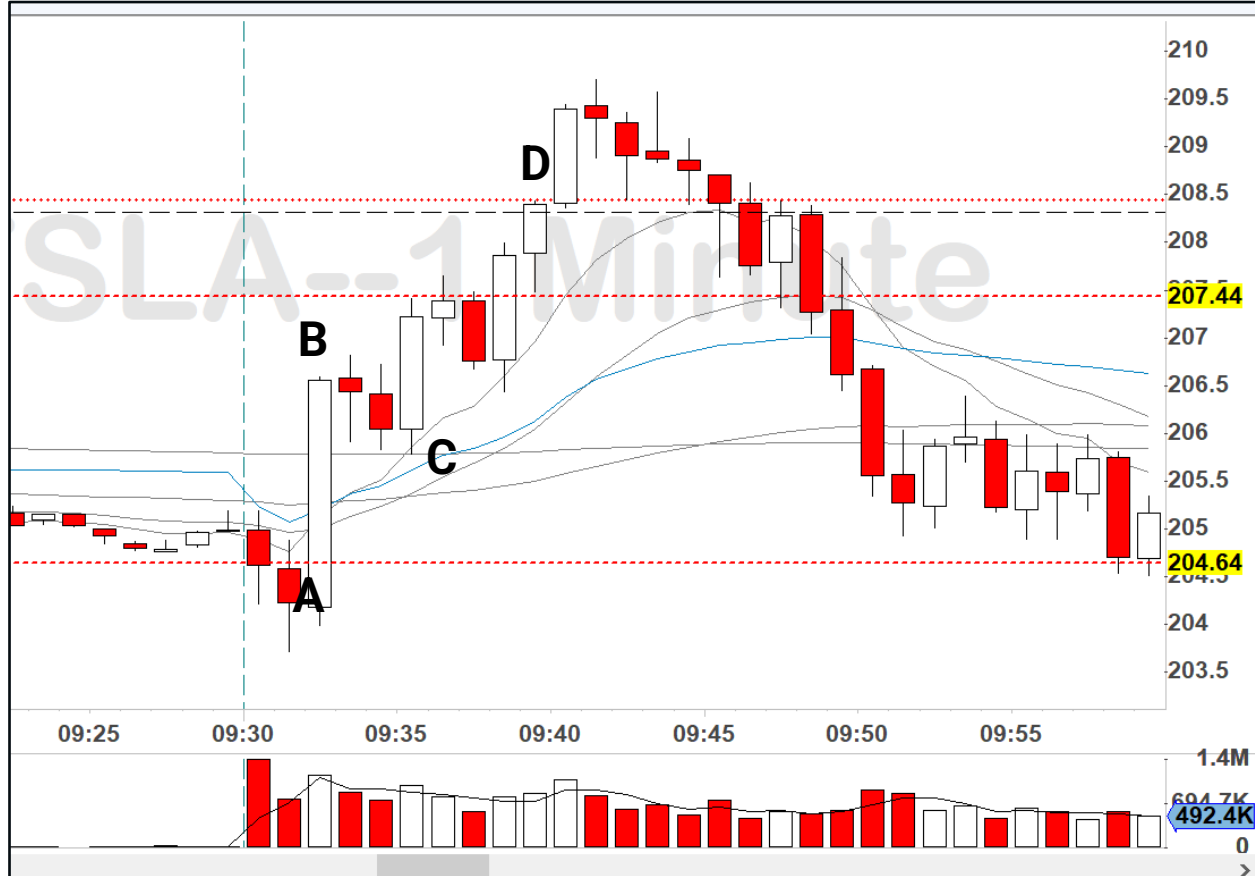
- **Enter:**
 - At the break of the 5 min Range.
 - Potential High (wick) of the candlestick, (Some use the close of candlestick)
 - Check for high relative volume.
 - Speed of Time and Sales for breakout
 - Not too distant from VWAP
 - If it's too far, is extended.
- **Stop loss:**
 - Usually, the loss or break of VWAP.
- **Profit target:**
 - High of pre-market if nearby
 - Next important level such as Pivots
 - Moving averages nearby
 - Previous day close
 - High & Low for the last 2 trading days.



Consideration Notes

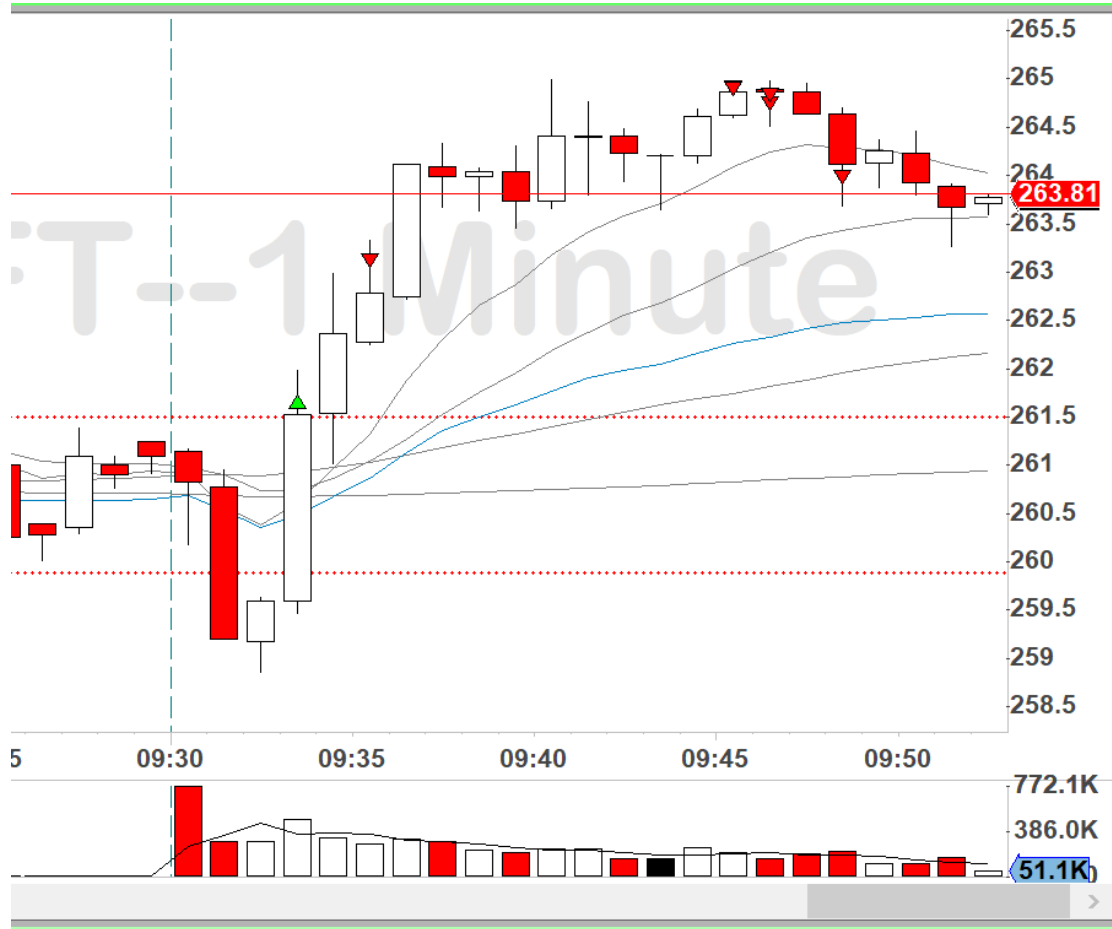
- This can be traded long or short.
- Setup can be used up to the 1st hour after the market open.
- Use 5-min to identify the setup | Use 1-min to fine tune entry.
- Same strategy can be used for a 15-, 30- or 60-min Opening Range.
- Squeeze above VWAP, like Example TSLA, entry above VWAP, stop lost below VWAP, scale out 10-% each R.

TSLA Example



Examples

- MSFT On Earnings | Sometimes a good setup might appear before the 5 min range.



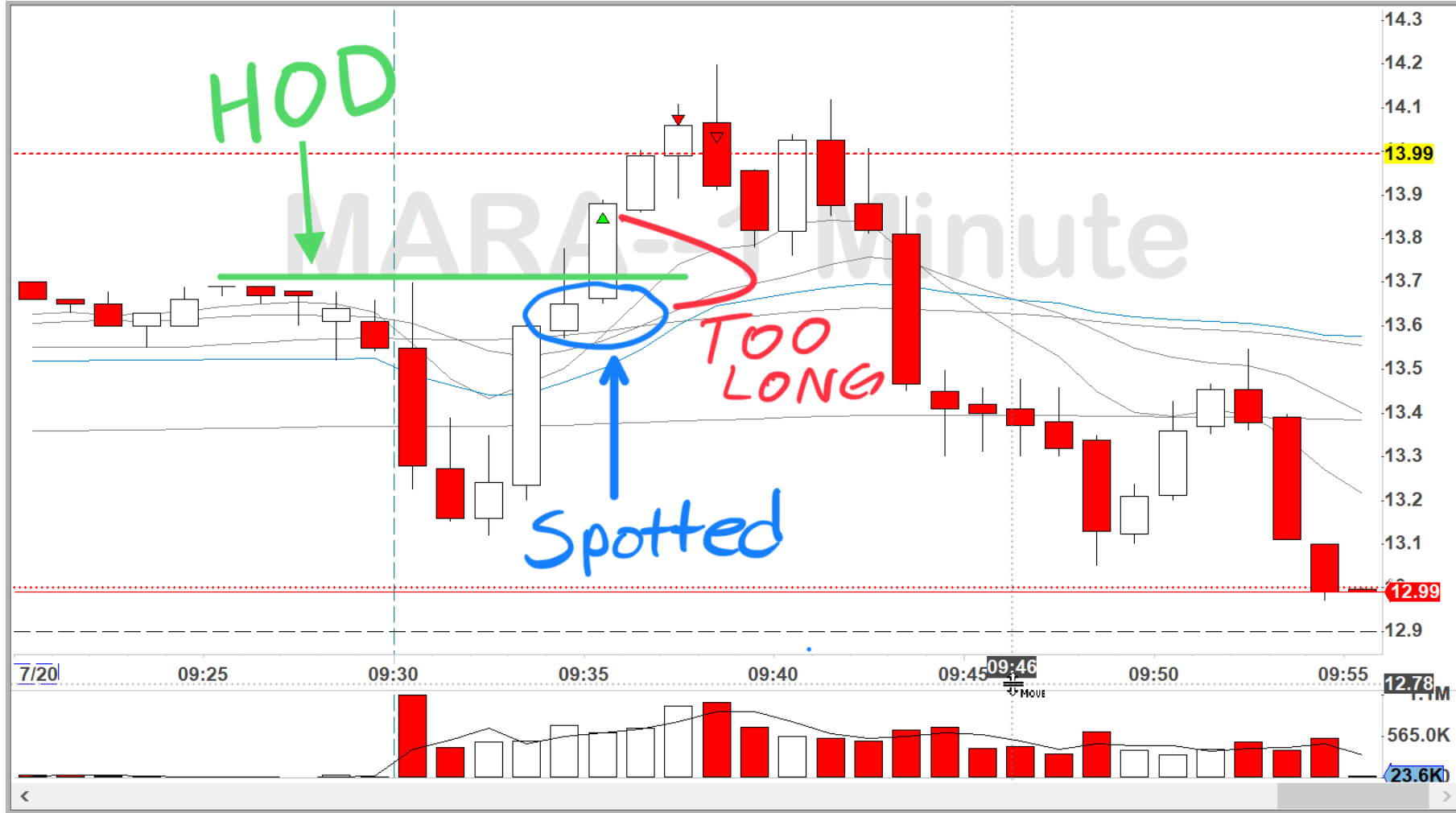
Examples

- MSFT On Earnings | Sometimes a good setup might appear before the 5 min range.

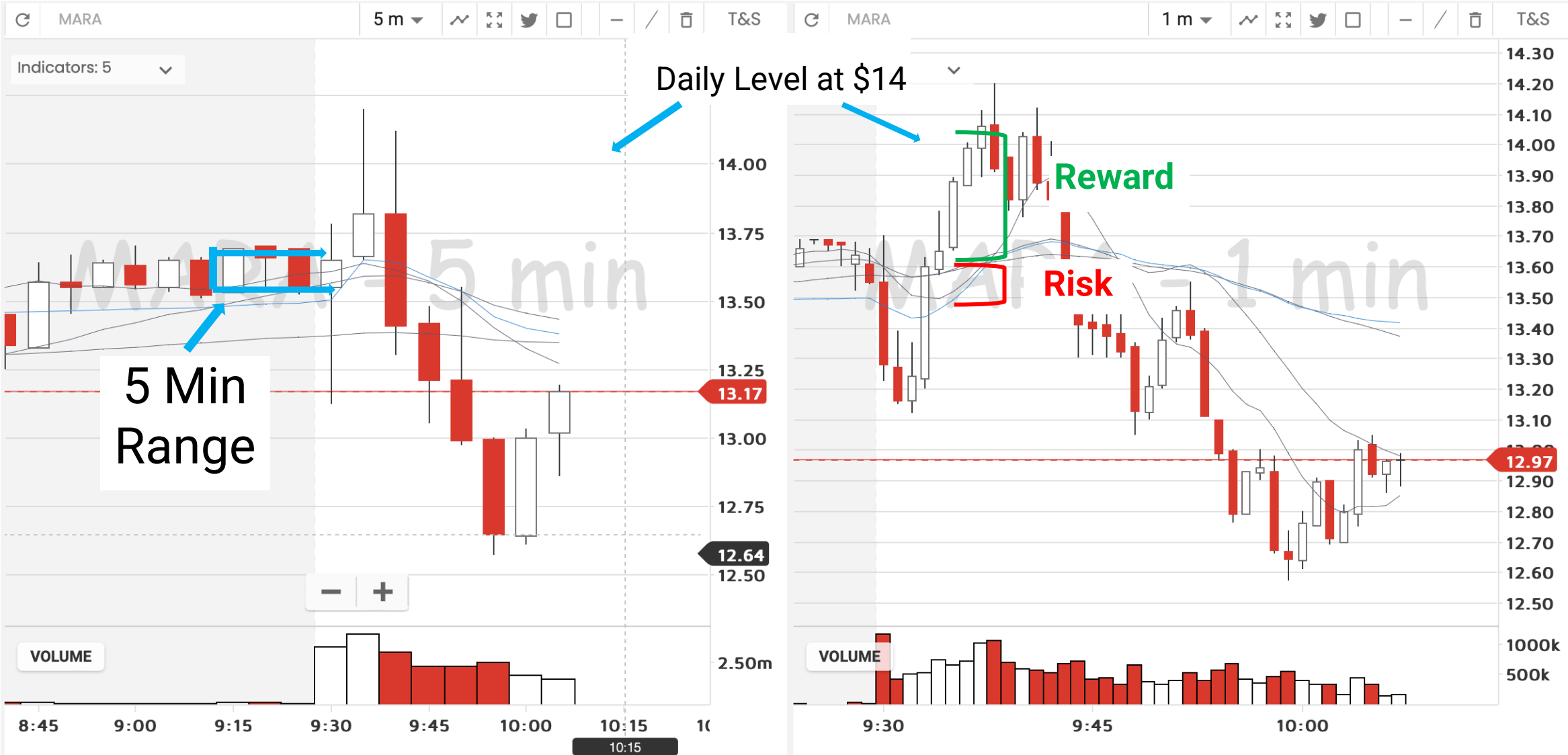


Examples

- MARA Great Set up / Poor Execution



MARA Example



Examples

- Trades from John.



Examples

- Trades from John.

