

# Lightning Bolt Strategy



**TRADING TERMINAL.COM**

Presented by: Peter Donnelly

# Stock Selection

- Works best with mid- to large float stocks
- Stock should be trading with strong volume
- Must have good separation from the VWAP



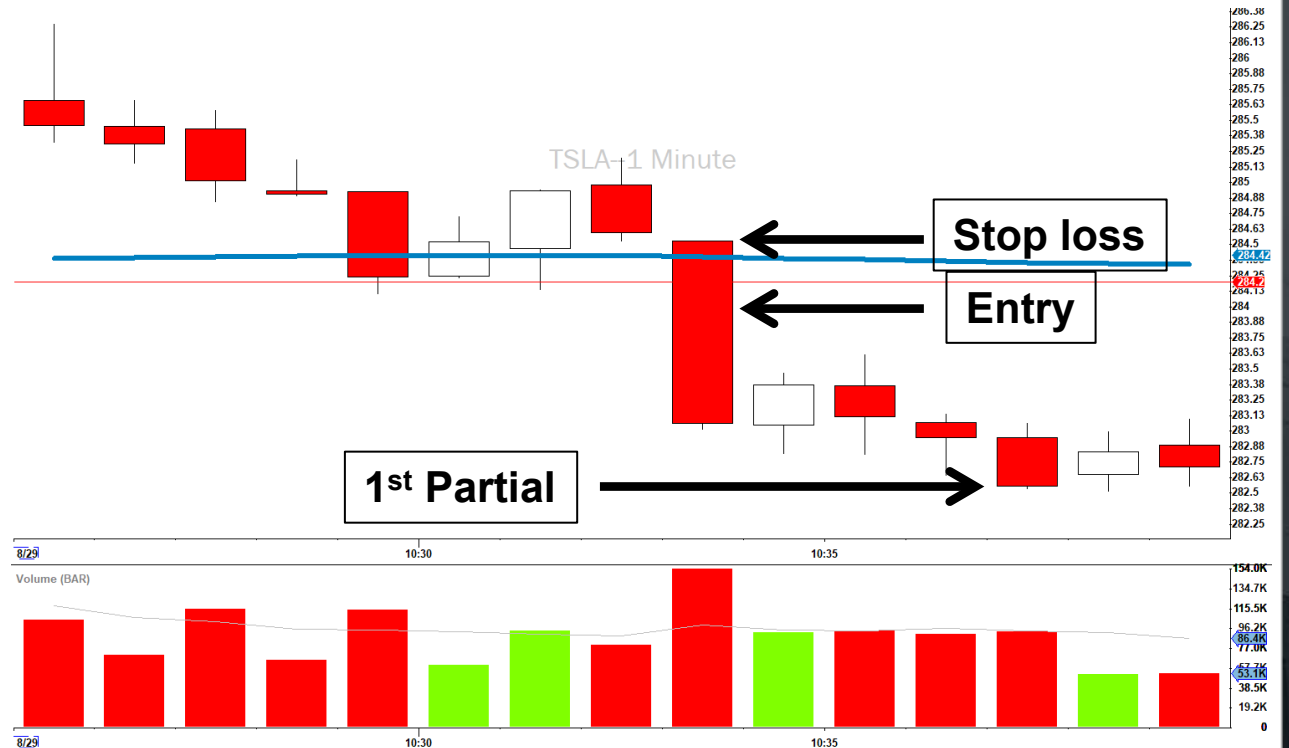
# Setup Identification

1. Good trend to the VWAP
2. Candle close past VWAP
3. Pullback of at least 1 candle
4. Small pullback (no more than 50% of move)
5. Continuation in original direction
6. Candle to move and close past VWAP
7. No drop in volume



# Trade Execution

- Entry should be on the 1<sup>st</sup> candle after VWAP cross
- The Stop Loss is the open of the candle on the other side of VWAP
- I will not partial until I've achieved 2x my initial risk
- Always obey your stop



# Consideration Notes

- This can be played long or short
- Any intraday timeframe works
- Set-ups occur from 9:40am – 3:00pm
- Trades will last 2min – 4+ hours

