

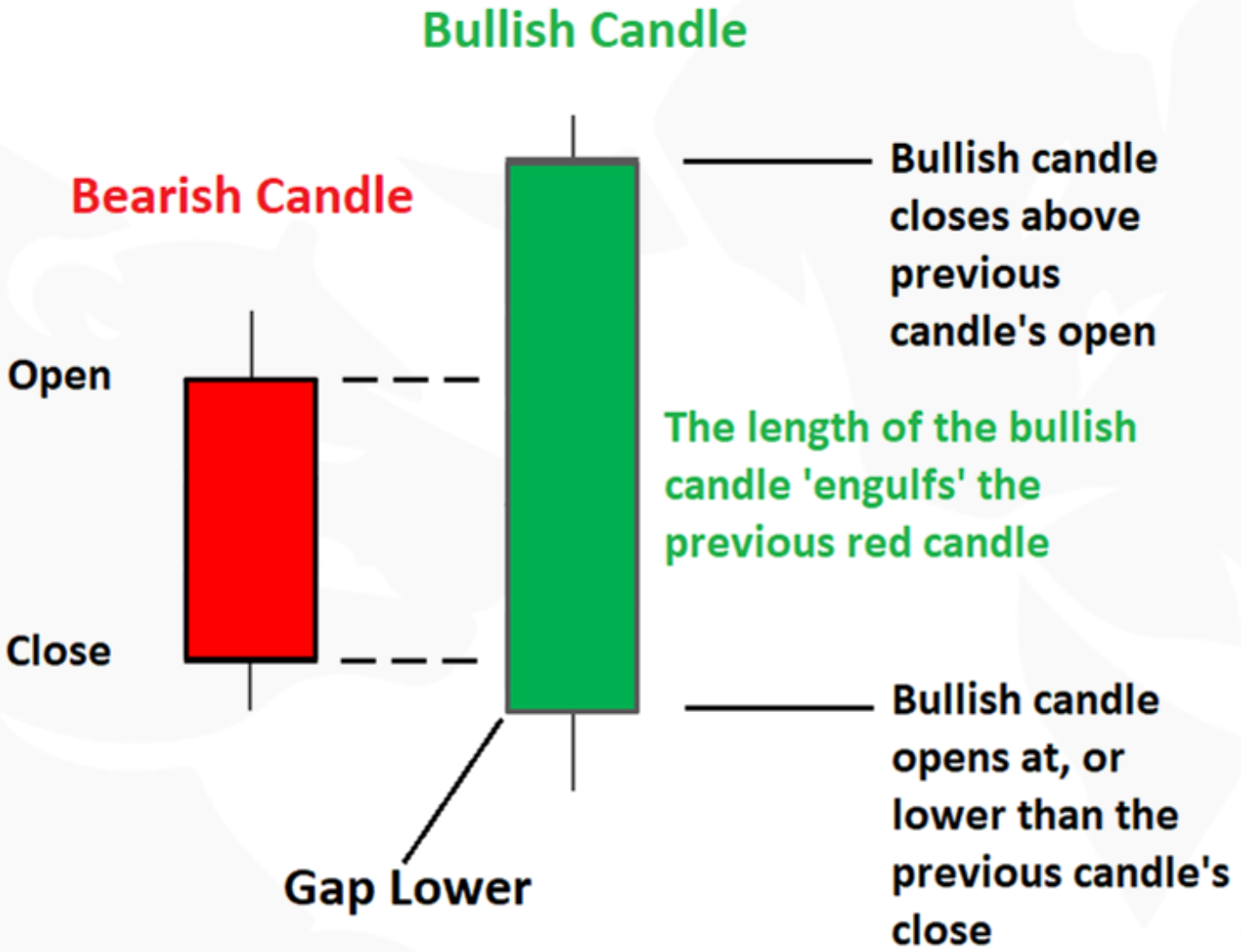


# Bearish and Bullish Engulfing Cracks

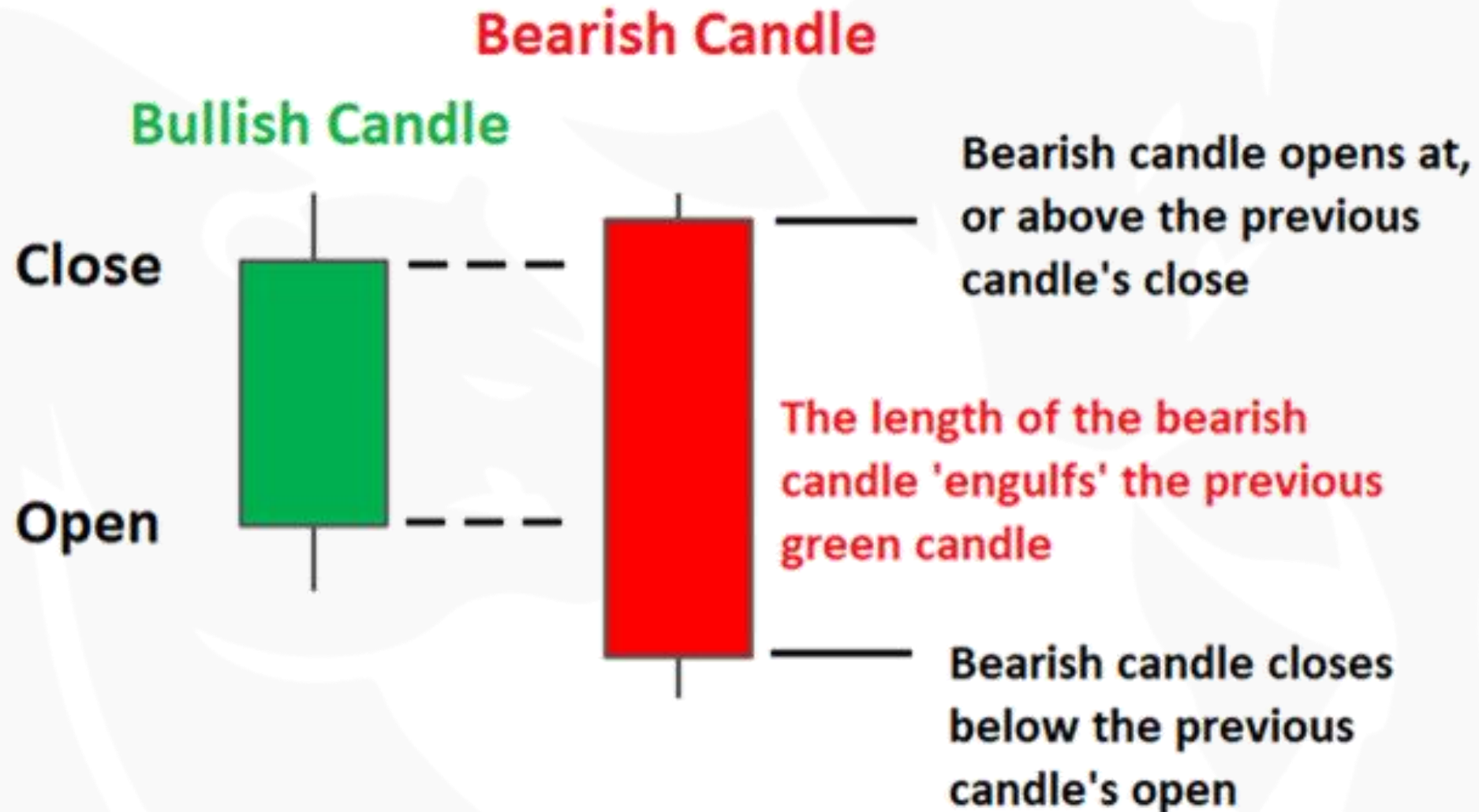
PRESENTED BY:

Andrew Aziz

# Bullish Engulfing Pattern

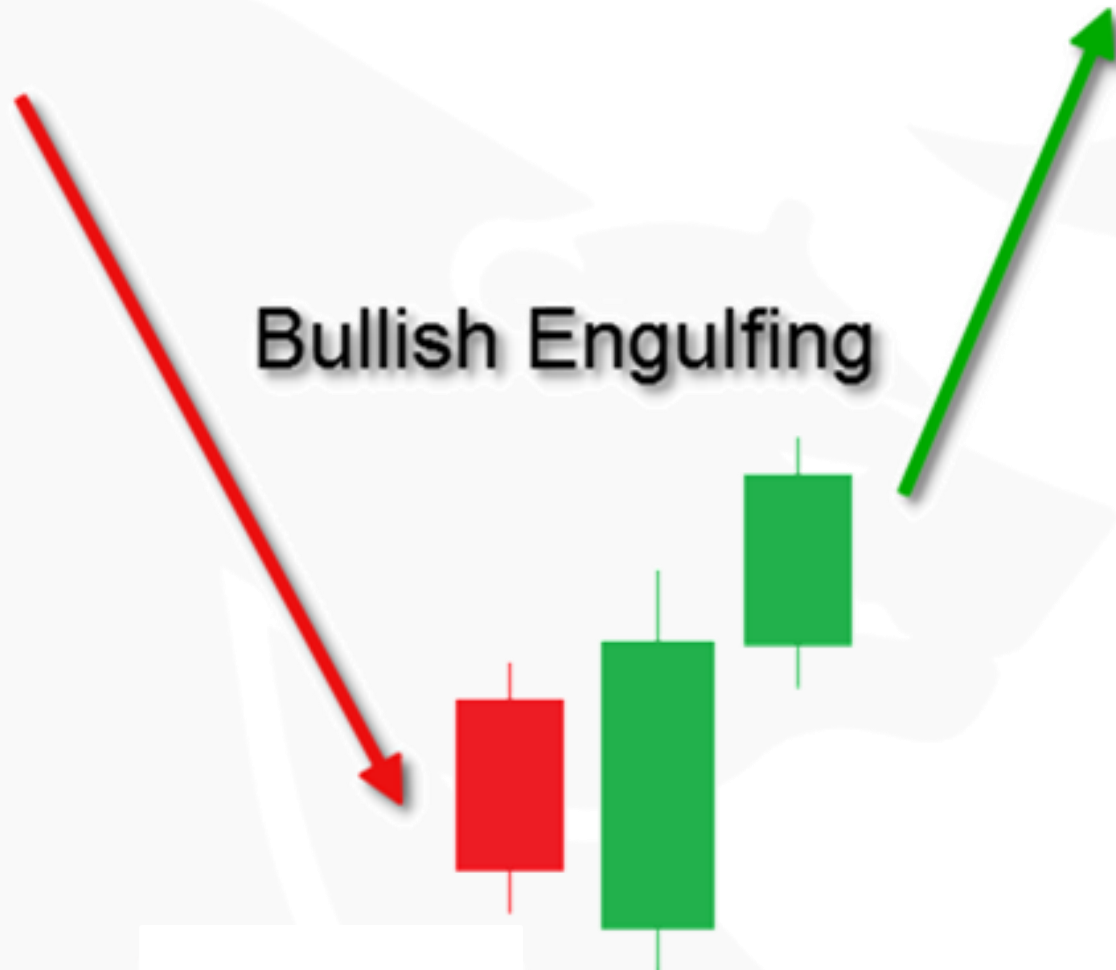


# Bearish Engulfing Pattern



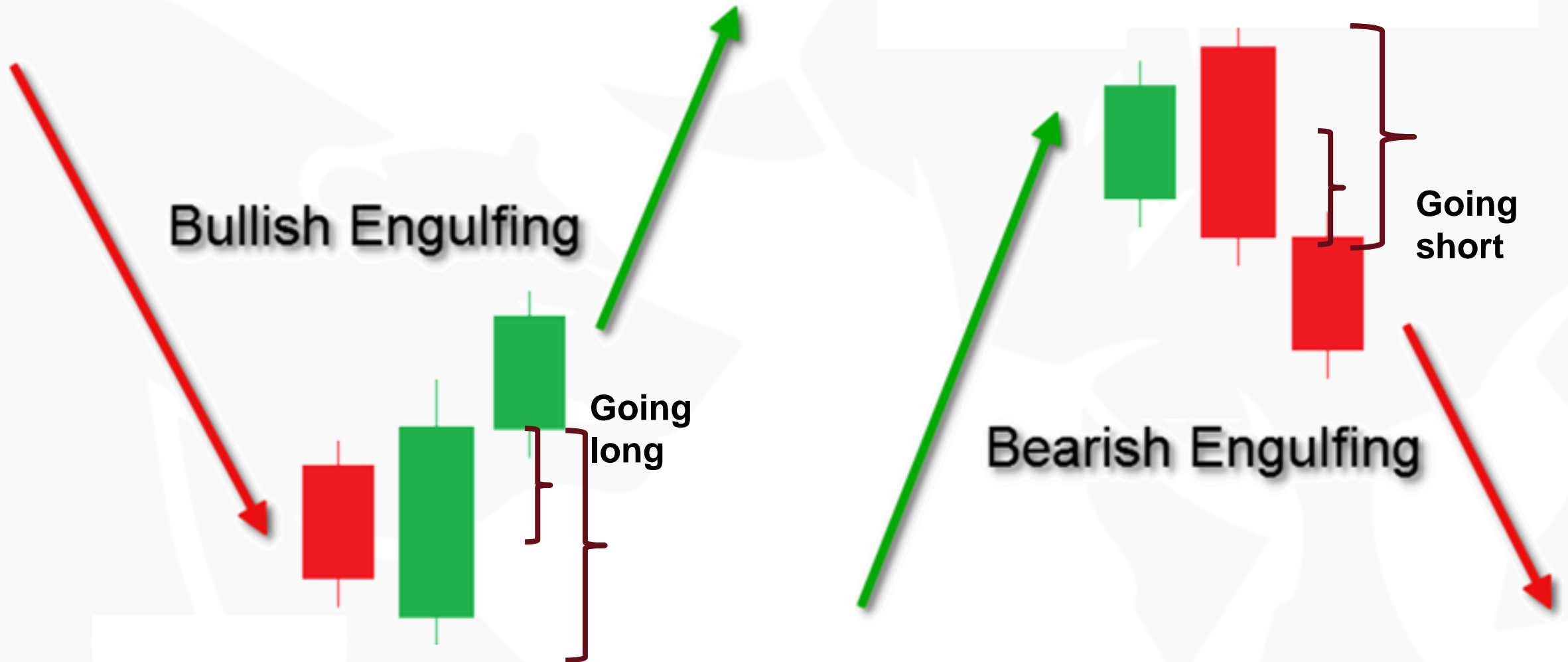
# Engulfing Candlesticks are Powerful Reversal Patterns

---

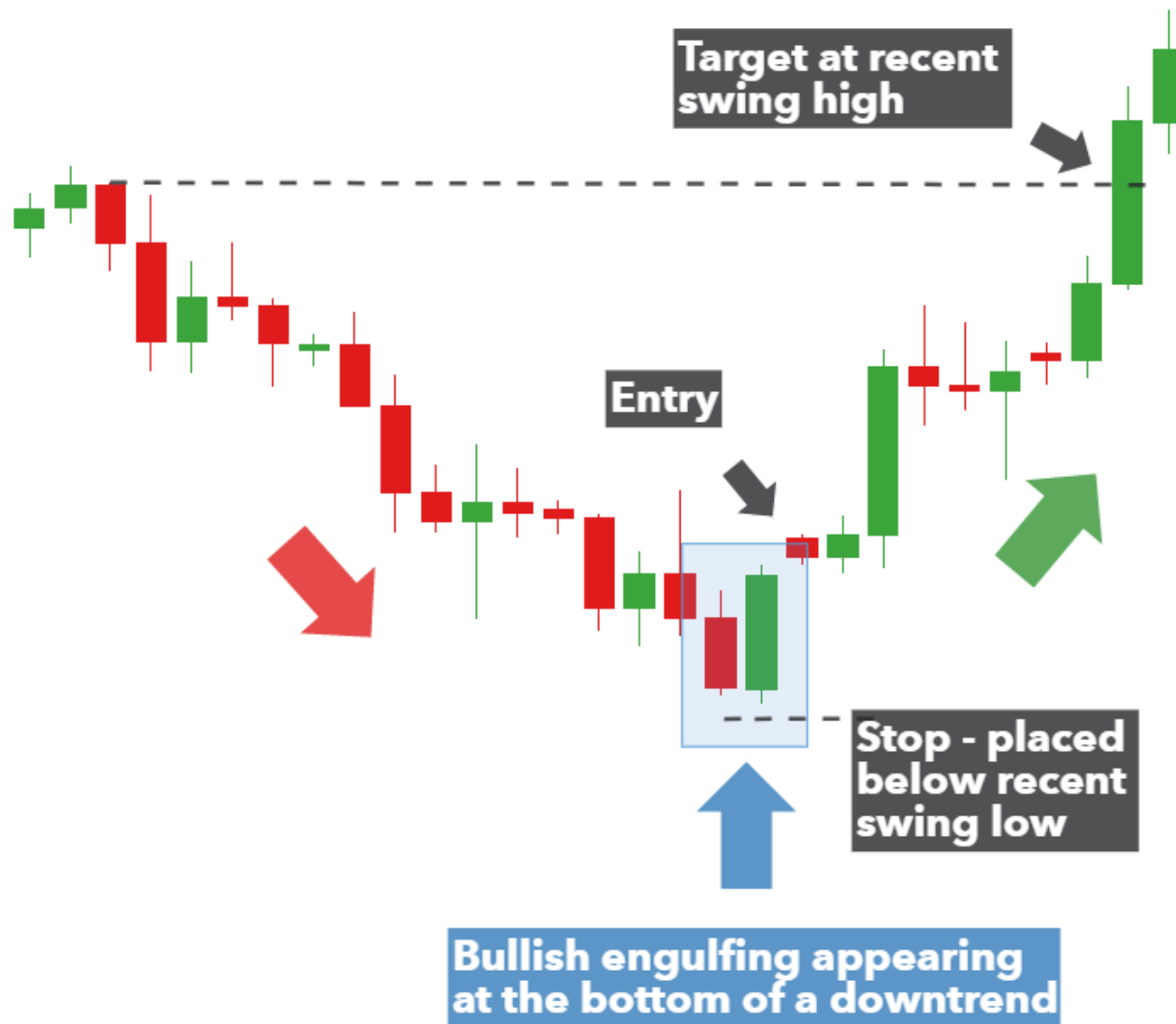


# Entry, Exit, Stop Loss: 50% of Previous Candle

---



# Swing Traders usually use low or high.



# Engulfing Patterns are More Meaningful at Levels



# Summary Day Trading Engulfing Cracks

---

- I look at Engulfing Patterns only in 5-min charts at the Open 9:30-9:40am
- 1-min Engulfing may be meaningful if Candlesticks is “big” enough, otherwise, most 1-min candlesticks are choppy and can look like an engulfing

Bearish Engulfing Crack can be **short** under VWAP, with stop loss of above VWAP or 50% of previous candlestick.

Bullish Engulfing Cracks can be **long** above VWAP, with stop loss below VWAP or 50% of previous candlestick.

- This Strategy is also a form of 5-min Opening Range Breakout.
- **Entry**
- *Look at 1-min pull backs if it is not too extended. See examples:*

# Example 2 June 2023



# Example 2 June 2023 (look at 1-min chart)





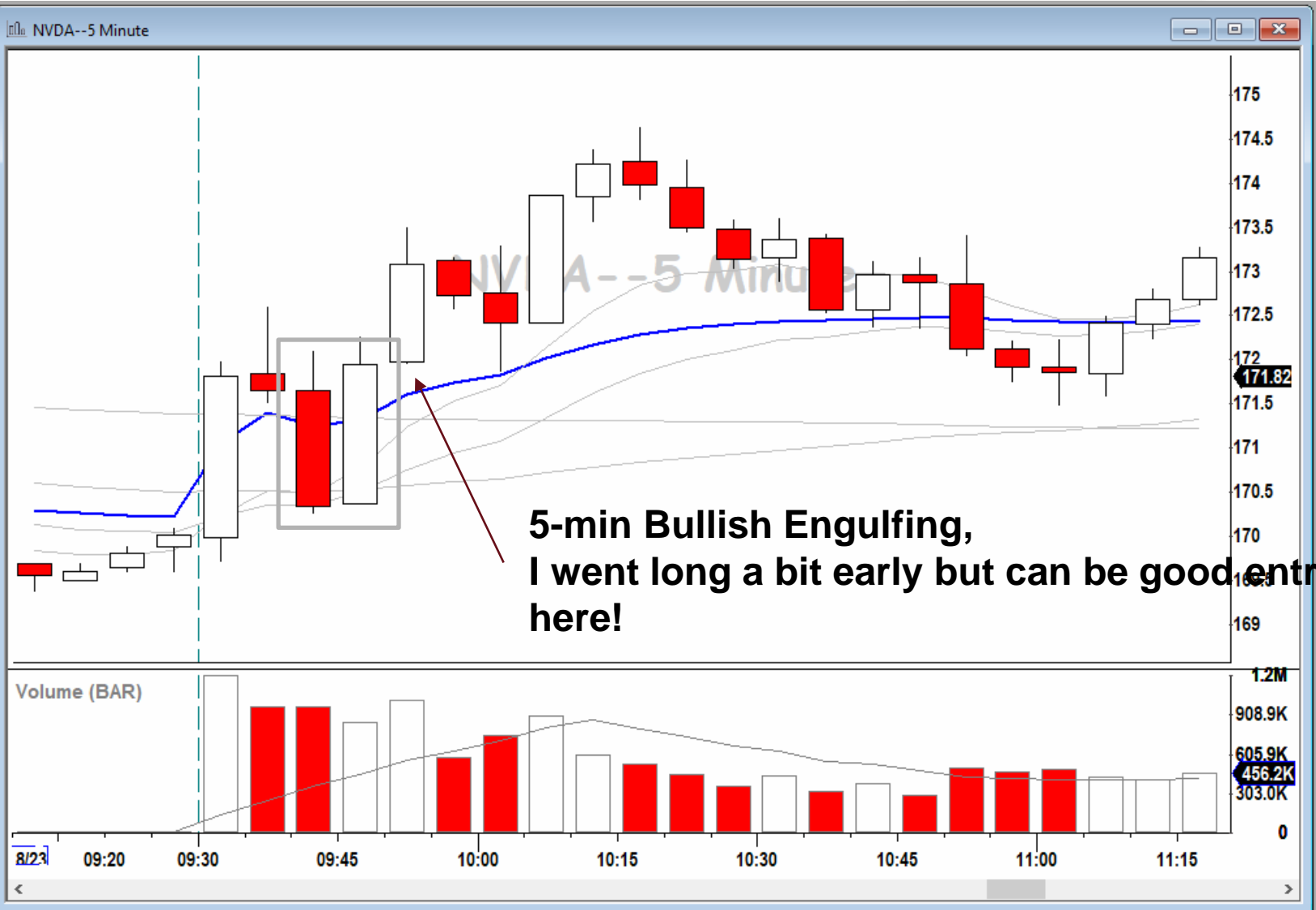
# Example 2 June 2023 (look at 1-min chart)



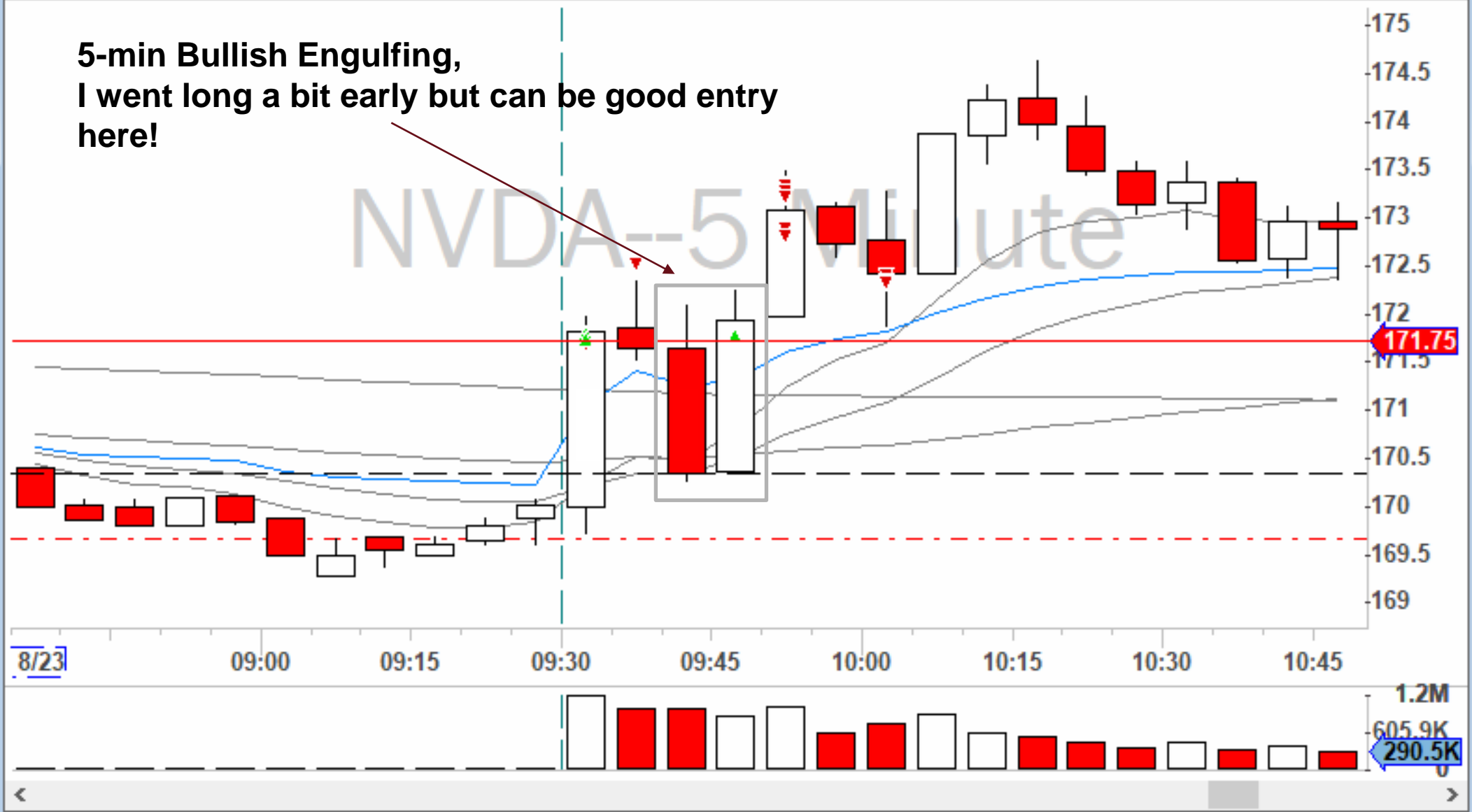
# Example 3 Bullish Engulfing

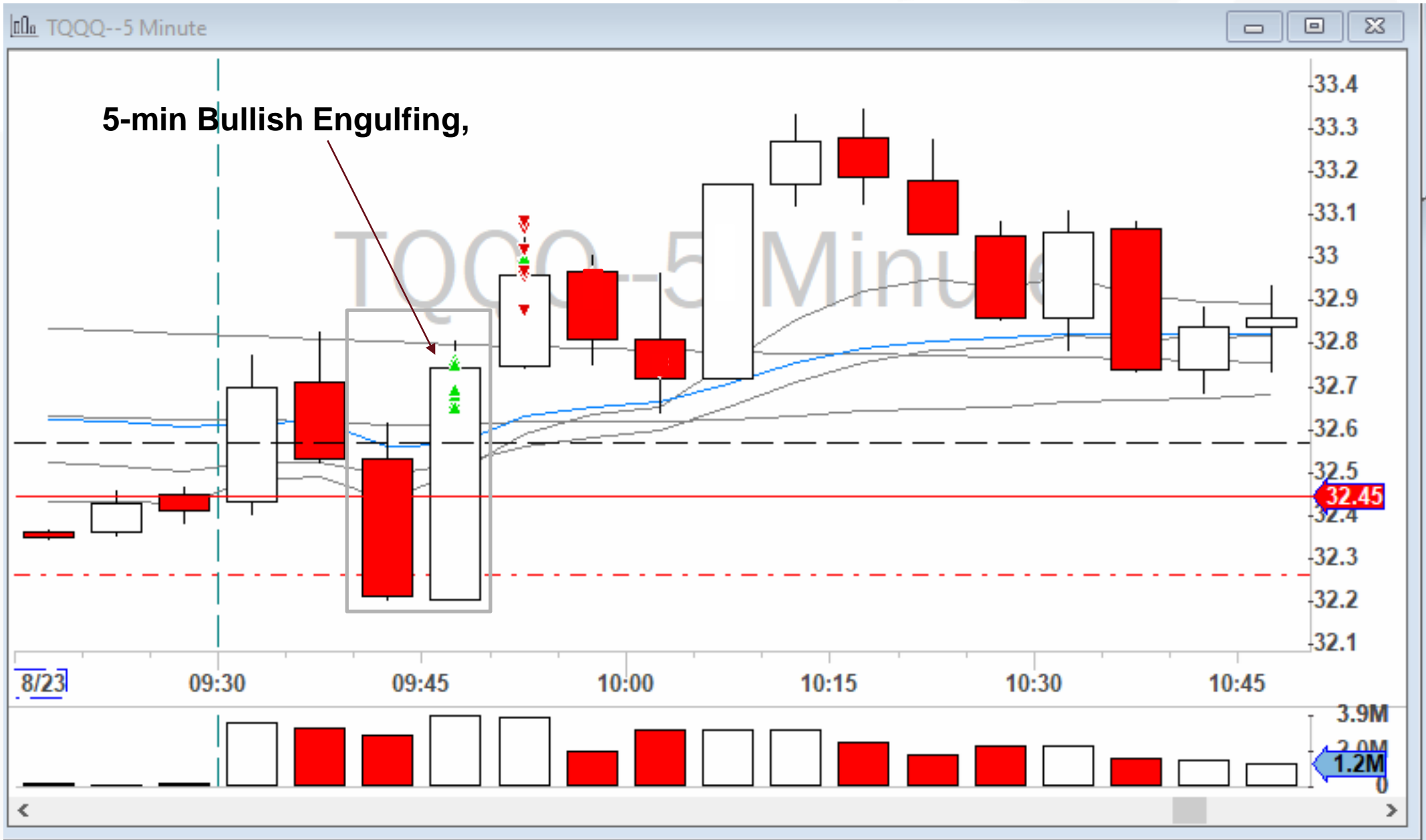


# Example 3 Bullish Engulfing



5-min Bullish Engulfing,  
I went long a bit early but can be good entry  
here!





# Bullish Engulfing (look at 1-min chart)





# Bearish Engulfing 1-min chart



# Are All Engulfing Cracks Tradable? 25 July 2023



# Summary Day Trading Engulfing Cracks

---

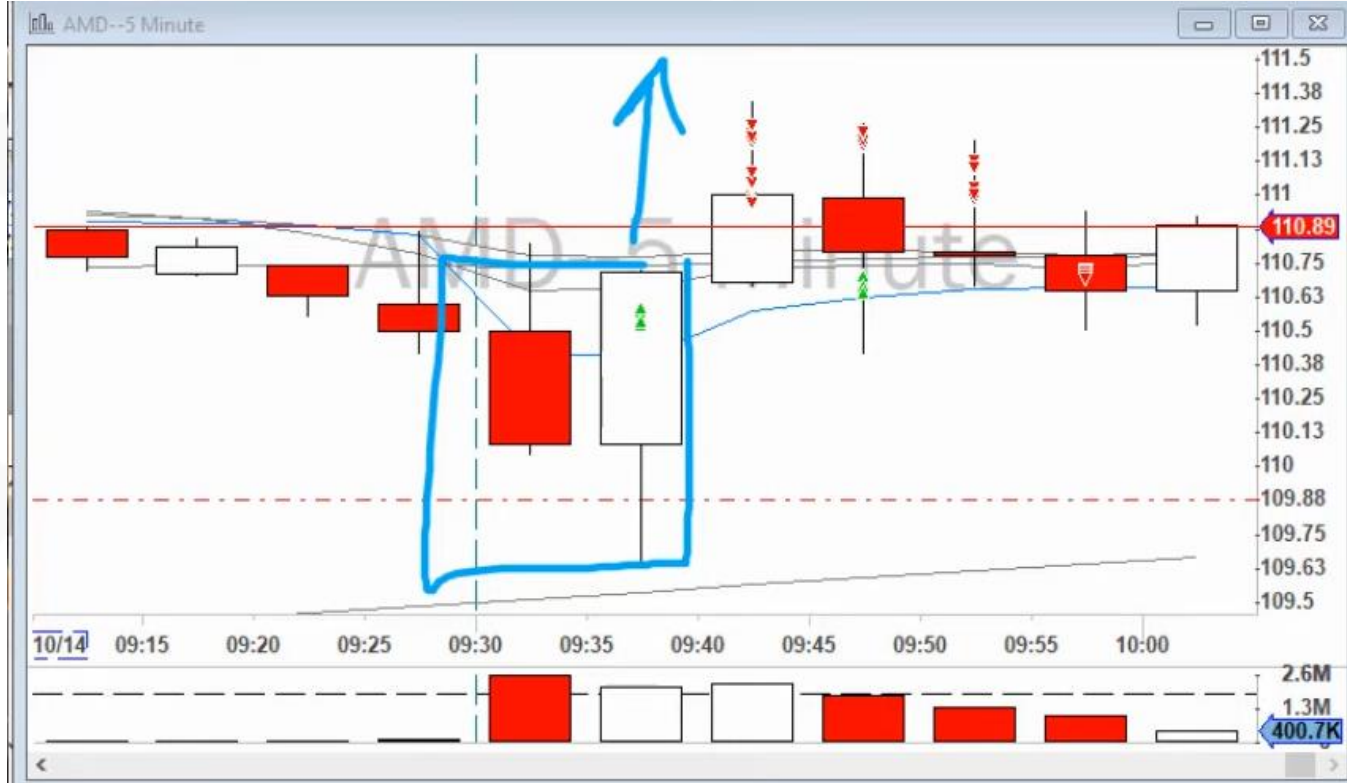
- I look at Engulfing Patterns only in 5-min charts at the Open 9:30-9:40am
- 1-min Engulfing may be meaningful if Candlesticks is “big” enough, otherwise, most 1-min candlesticks are choppy and can look like an engulfing

Bearish Engulfing Crack can be **short** under VWAP, with stop loss of above VWAP or 50% of previous candlestick.

Bullish Engulfing Cracks can be **long** above VWAP, with stop loss below VWAP or 50% of previous candlestick.

- This Strategy is also a form of 5-min Opening Range Breakout.
- **Entry**
- *Look at 1-min pull backs if it is not too extended. See examples:*

# More Examples



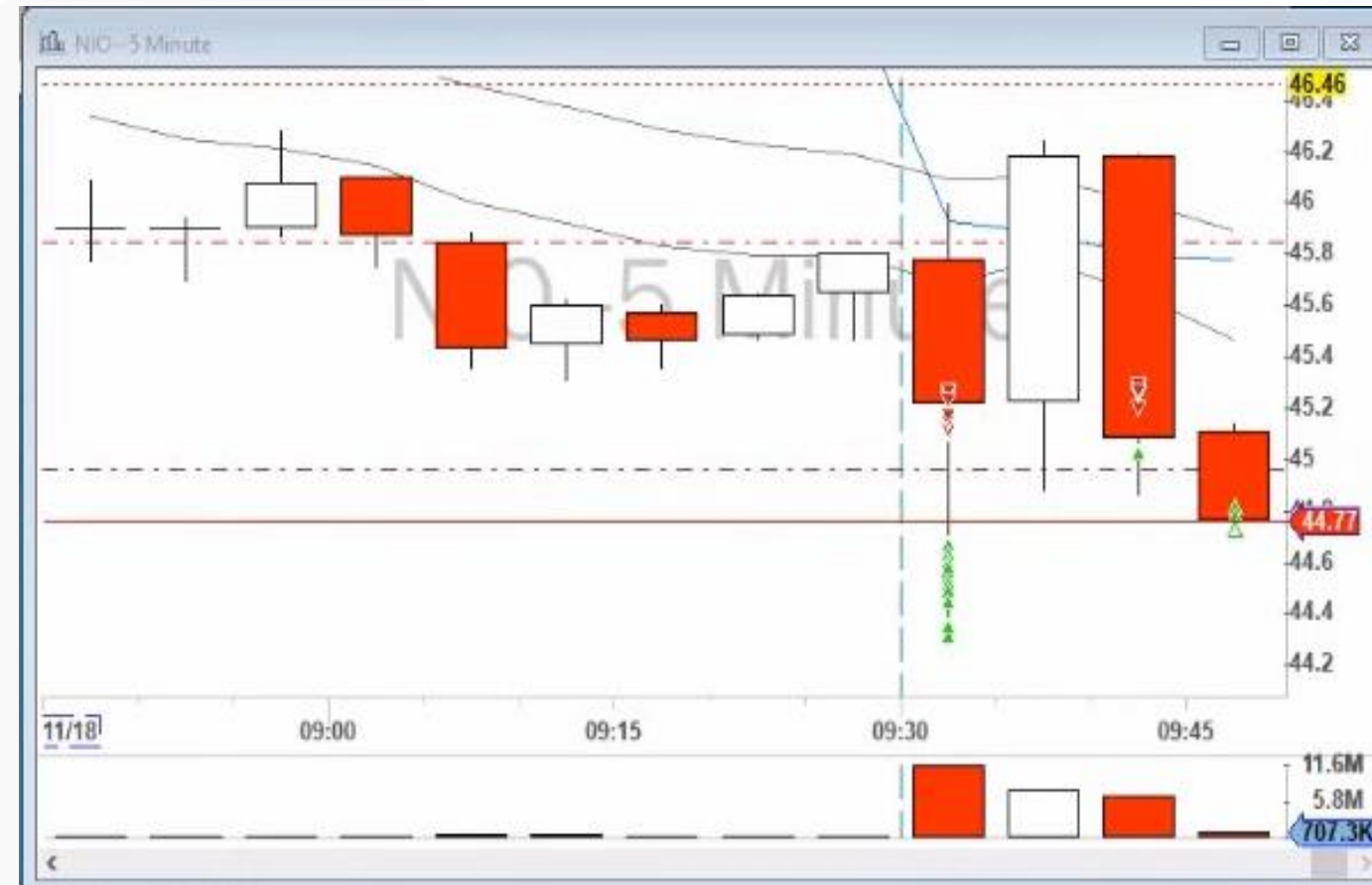
# More Examples AMC 22 June 2021



# More Examples CCL 24 Nov 2020

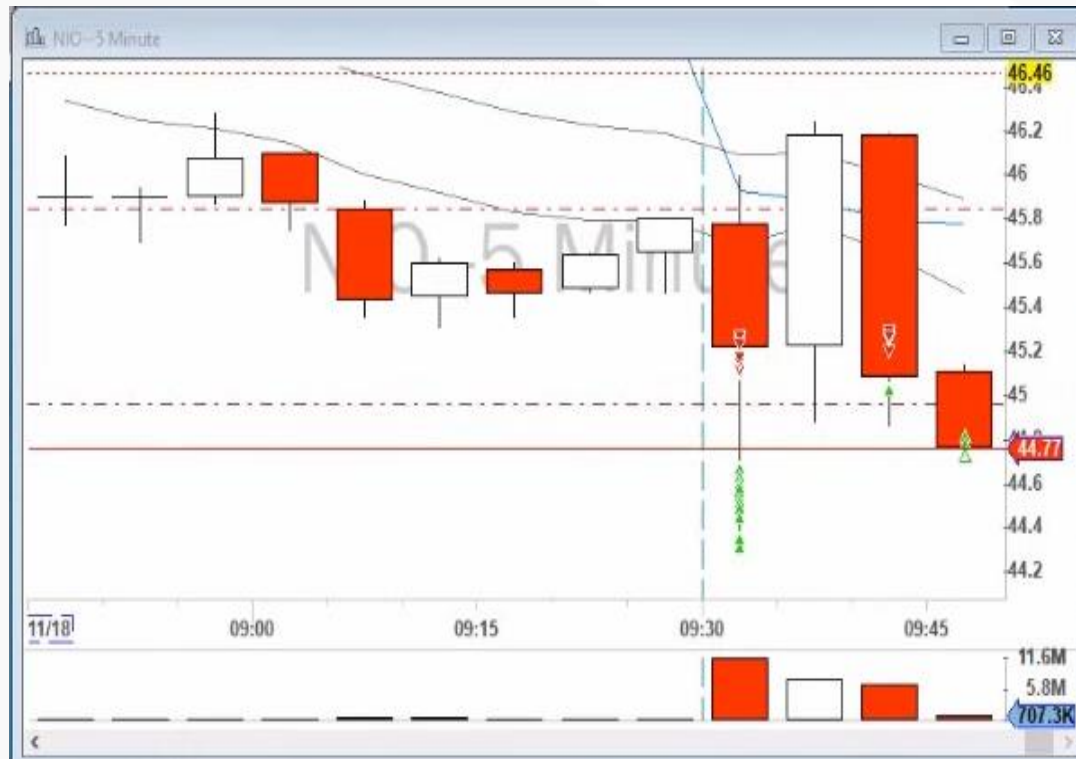


# More Examples NIO 18 Nov 2020



# More Examples NIO 18 Nov 2020

Look at Level 2 Indicators  
 Lets discuss Risk to Reward!



# More Examples CCL 24 Nov 2020



# Example 7 July 2023



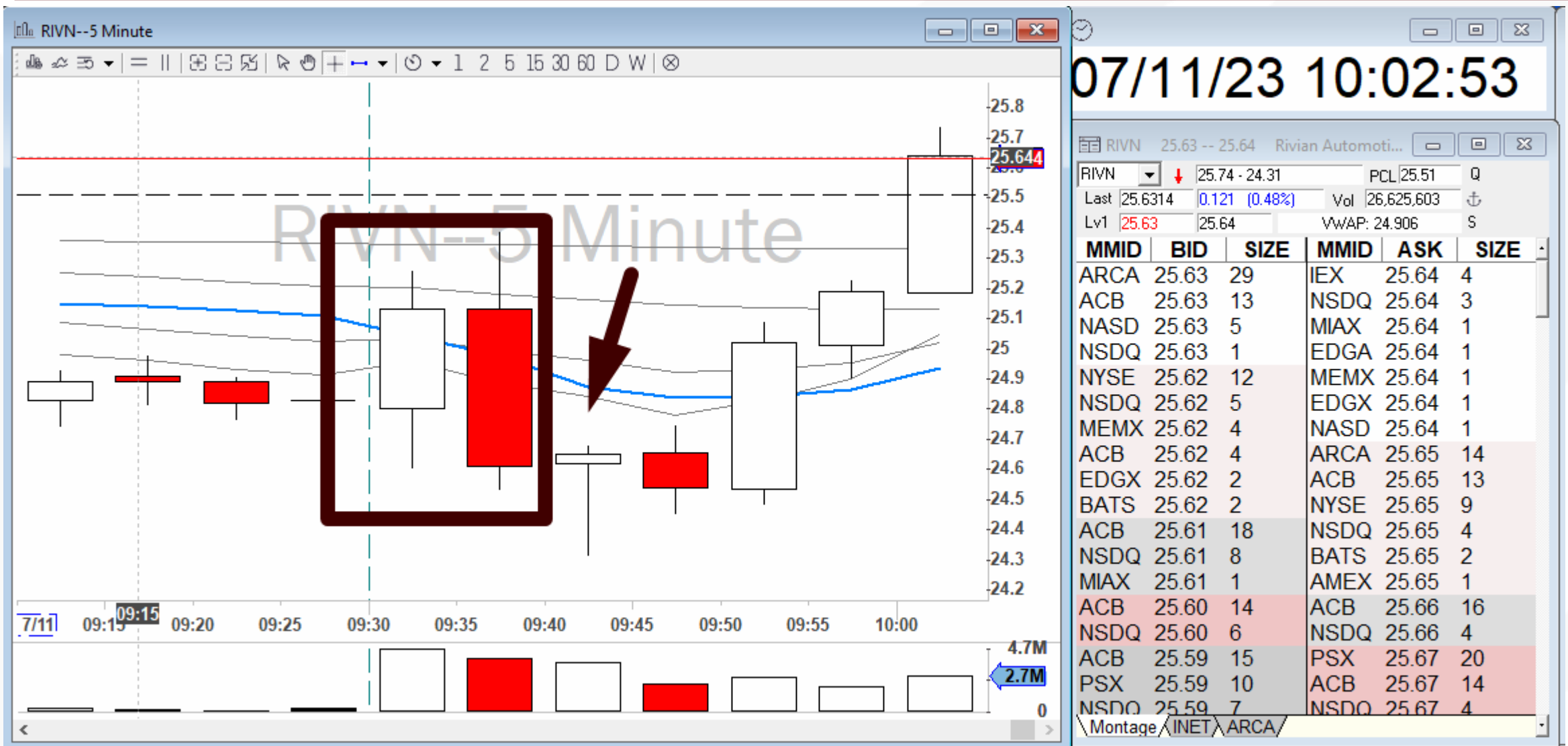
# Example 7 July 2023



# Example 7 July 2023



# July 11 2023



# July 12 2023, Apple: Discussions and Trade Management

