

# Continuation setup

# DISCLAIMER

Tradingterminal.com employees, contractors, shareholders and affiliates, are **NOT an investment advisory service, a registered investment advisor or a broker-dealer** and does not undertake to advise clients on which securities they should buy or sell for themselves.

You understand that **NO content published as part of the Trading Terminal and its Website constitutes a recommendation** that any particular investment, security, portfolio of securities, transaction or investment strategy is suitable for any specific person.

You further understand that **none of the creators or providers of our Services or their affiliates will advise you personally** concerning the nature, potential, value or suitability of any particular investment, security, portfolio of securities, transaction, investment strategy or other matter.

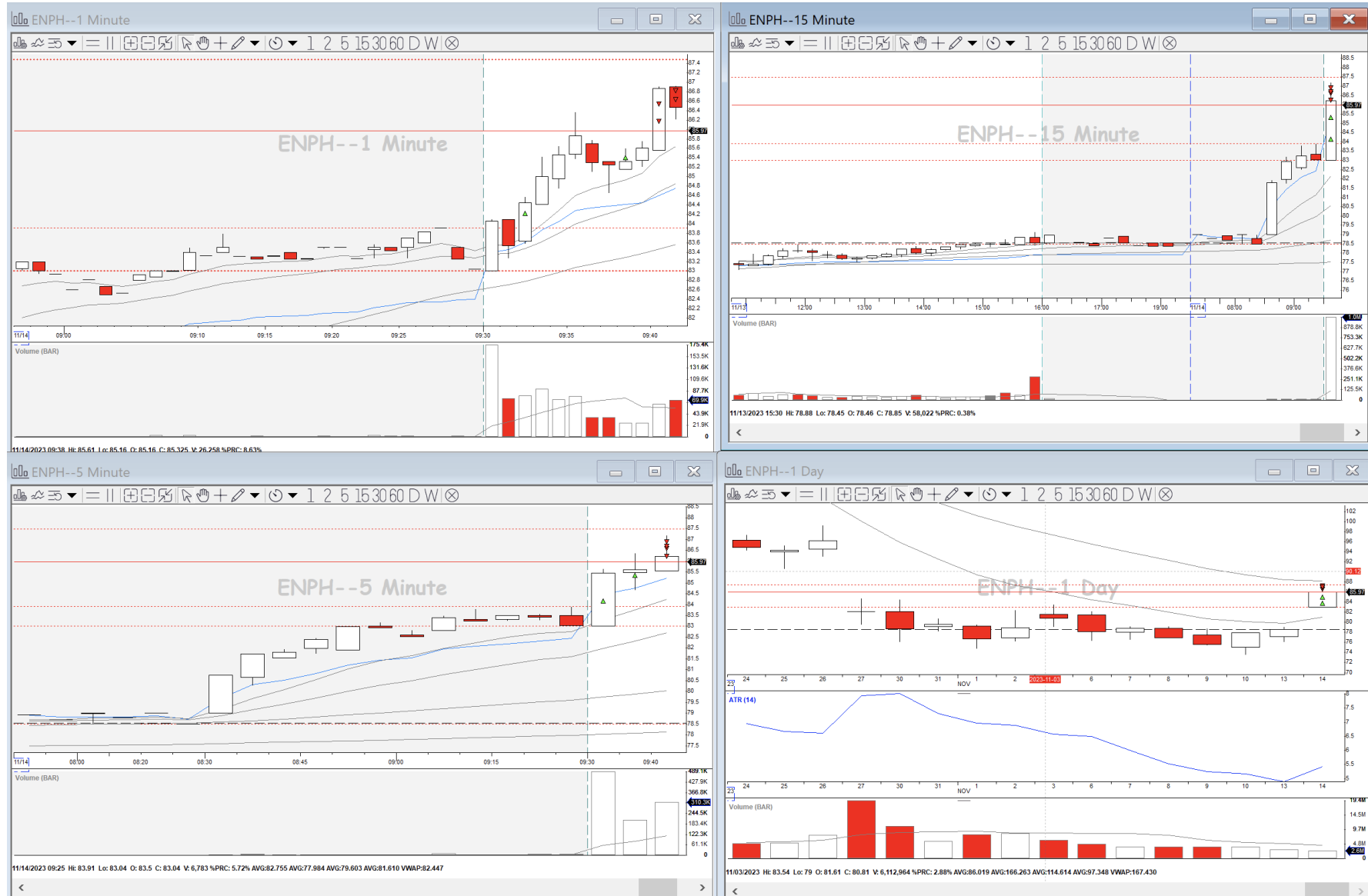
# Stock Selection

- Float: 50 million+
- Average daily volume: 3 million+
- ATR: \$0.60+
- Price of stock \$7+

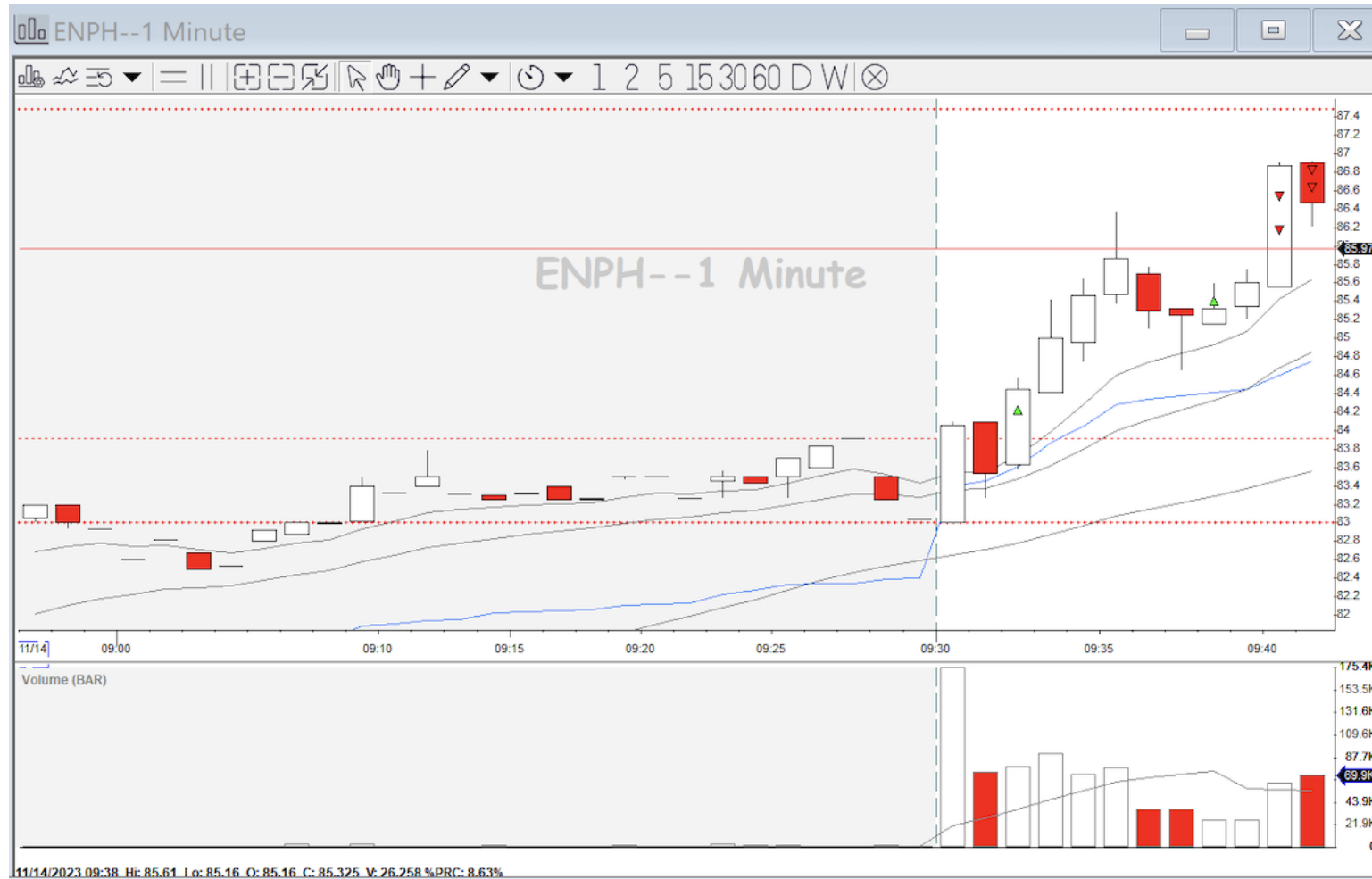
# Stock Selection

- We need stocks in play
- Confirmation of high volume/RVOL after the open
  
- Daily range gap
- Preferable a catalyst
- Clean PM price action with directionality
  
- Bonus: Tight (late) PM ranges

# Trade Execution



# Trade Execution



# Stock Selection

- Gap scanners
- Create an own watchlist of stocks according to selection criteria to scan everyday for significant gaps
- Use TradingTerminal.com to see if you can find a catalyst in the stock

Eastern Stand... 08:55:27

[TT] Gappers DI | + | 11-10 08:55

Time	Symbol	Change ...	Daily vo...	Price (\$)	daily AT...	Float
08:54:48	GRPN	-31.72 %	275,097	9.24	2.07 \$	17.18M
08:55:24	TTD	-22.72 %	1.71 M	59.42	9.52 \$	441.68M
08:55:12	DEO	-14.17 %	107,419	137.28	13.59 \$	2,237.00...
08:55:23	ILMN	-11.40 %	107,179	94.70	11.89 \$	157.94M
08:55:22	U	-11.25 %	1.71 M	22.40	3.24 \$	246.67M
08:54:43	TKO	-8.54 %	354,327	77.67	8.65 \$	54.80M
08:55:16	WYNN	-5.74 %	177,402	85.45	9.10 \$	96.06M
08:55:24	AMC	-2.35 %	385,220	8.50	1.55 \$	157.91M

[TT] Gappers UI | + | 11-10 08:55

Time	Symbol	Change ...	Daily vo...	Price (\$)	daily AT...	Float
08:53:07	FIGS	11.53 %	279,092	6.53	0.77 \$	127.53M
08:55:20	AIRE	11.11 %	102,187	5.50	226.58 \$	5.15M
08:55:24	MARA	3.30 %	845,606	9.54	1.44 \$	173.49M
08:55:19	TSM	3.25 %	189,467	94.59	9.04 \$	38,681.1...
08:55:18	COIN	2.91 %	211,995	95.56	11.62 \$	189.06M
08:54:50	RIOT	2.46 %	633,364	10.47	1.55 \$	176.56M
08:55:25	NIO	2.41 %	623,149	7.65	0.89 \$	1,283.01M

Market Viewer...

Symbol	% Cha...	RVOL	Volume
AA	2.4	100%	17,776
AAP	2.2	100%	4,446
AAPL	0.68	100%	355,485
ABBV	0.45	100%	828
ABNB	0.94	100%	23,253
ABT	0	100%	300
ACN	0.03	100%	1,636
ADBE	1.1	100%	14,026
ADI	0	100%	218
ADM	0.59	100%	3,110
AEO	0	100%	33
AEP	0.85	100%	1,485
AFL	0.67	100%	173
AFRM	3.7	100%	743,744
AGL	0	0%	
AGNC	1.2	100%	143,031
AI	3.3	100%	276,889
AIG	0.47	100%	709
AKAM	0	100%	67
ALLY	1.8	100%	2,282
AMAT	2.2	100%	291,515
AMC	4.1	100%	602,845
AMCR	0	100%	60
AMD	1.7	100%	605,935
AMGN	0.47	100%	828
AMZN	1	100%	515,637

Market Viewer...

Symbol	% C...	RVOL	Volume
PARA	-1.3	100%	302,684
CTVA	-1.3	100%	1,541
LTHM	-1.2	100%	133,625
SAGE	-0.62	100%	361
PBF	-0.42	100%	318
COP	-0.42	100%	1,976
AVTR	-0.4	100%	124
OXY	-0.33	100%	109,973
APA	-0.31	100%	1,627
TSN	-0.31	100%	421
NOV	-0.3	100%	824
HAL	-0.27	100%	23,878
CPRT	-0.21	100%	1,173
SLB	-0.17	100%	11,111
CVX	-0.13	100%	33,386
DVN	-0.09	100%	24,001
MRO	-0.08	100%	9,321
OVV	-0.07	100%	5,830

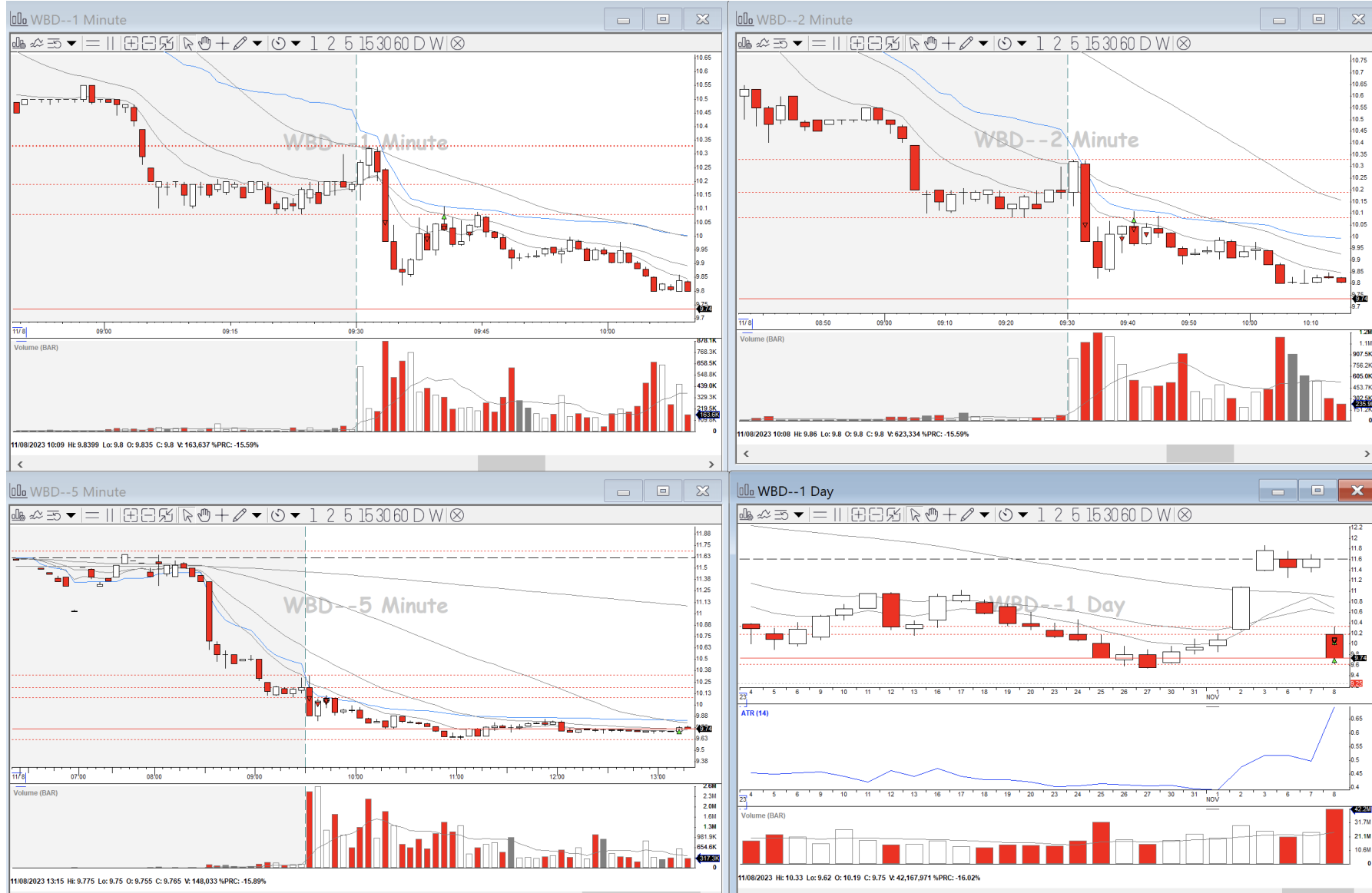
Market Viewer...

Symbol	% C...	RVOL	Volume
MU	7.4	100%	1,344,...
ROIV	7.3	100%	65,131
SHLS	5.9	100%	2,368
FHN	5.3	100%	1,275
MARA	4.9	100%	3,075,...
MP	4.4	100%	38,460
CVNA	4.5	100%	346,073
NOVA	4.4	100%	21,681
WDC	4.2	100%	21,274
AMC	4.1	100%	606,985
PTON	4	100%	55,349
ZIM	3.9	100%	155,275
AFRM	3.9	100%	747,105
PACB	3.6	100%	11,129
RIOT	3.3	100%	928,525
BILI	3.5	100%	199,248
UPST	3.5	100%	366,129
APLS	3.3	100%	482

# Setup Identification

- The strategy starts with preparation in the PM
- After the open we identify a first move in the direction of our bias
- We attempt to catch the 2<sup>nd</sup> move (the continuation)
  
- Recognize potential support/resistance at the VWAP, PM low/high and opening range high/low
- Confirmation in the bottom of the pullback

# Trade Execution



# Trade Execution



# Trade Execution

- Multiple confirmations. Examples: rejections, a pattern, volume price analysis
- Entry as low as possible in the pullback (in case of a long)
  
- Extendedness
- Intraday volume confirmation

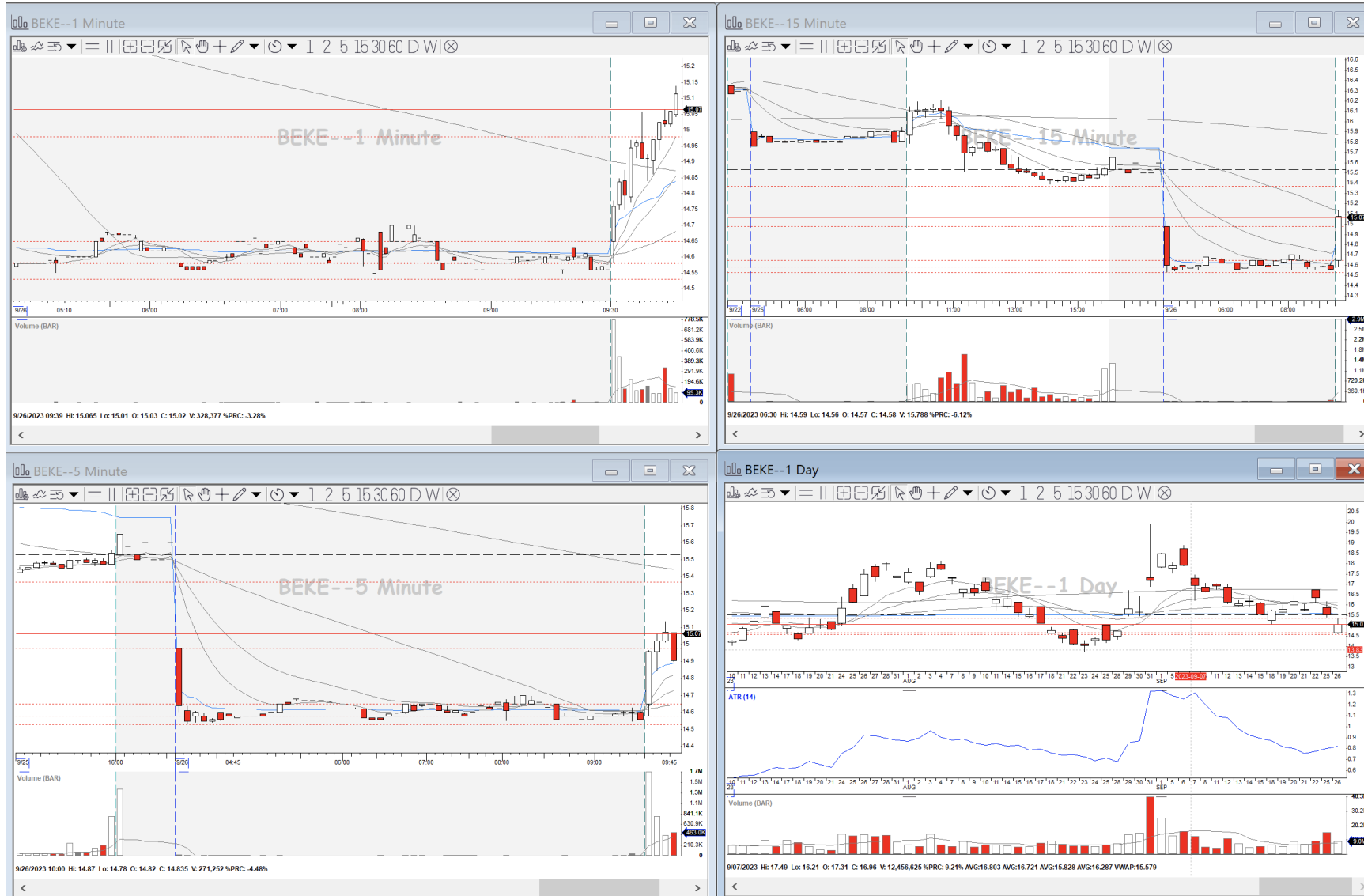
# Trade Execution



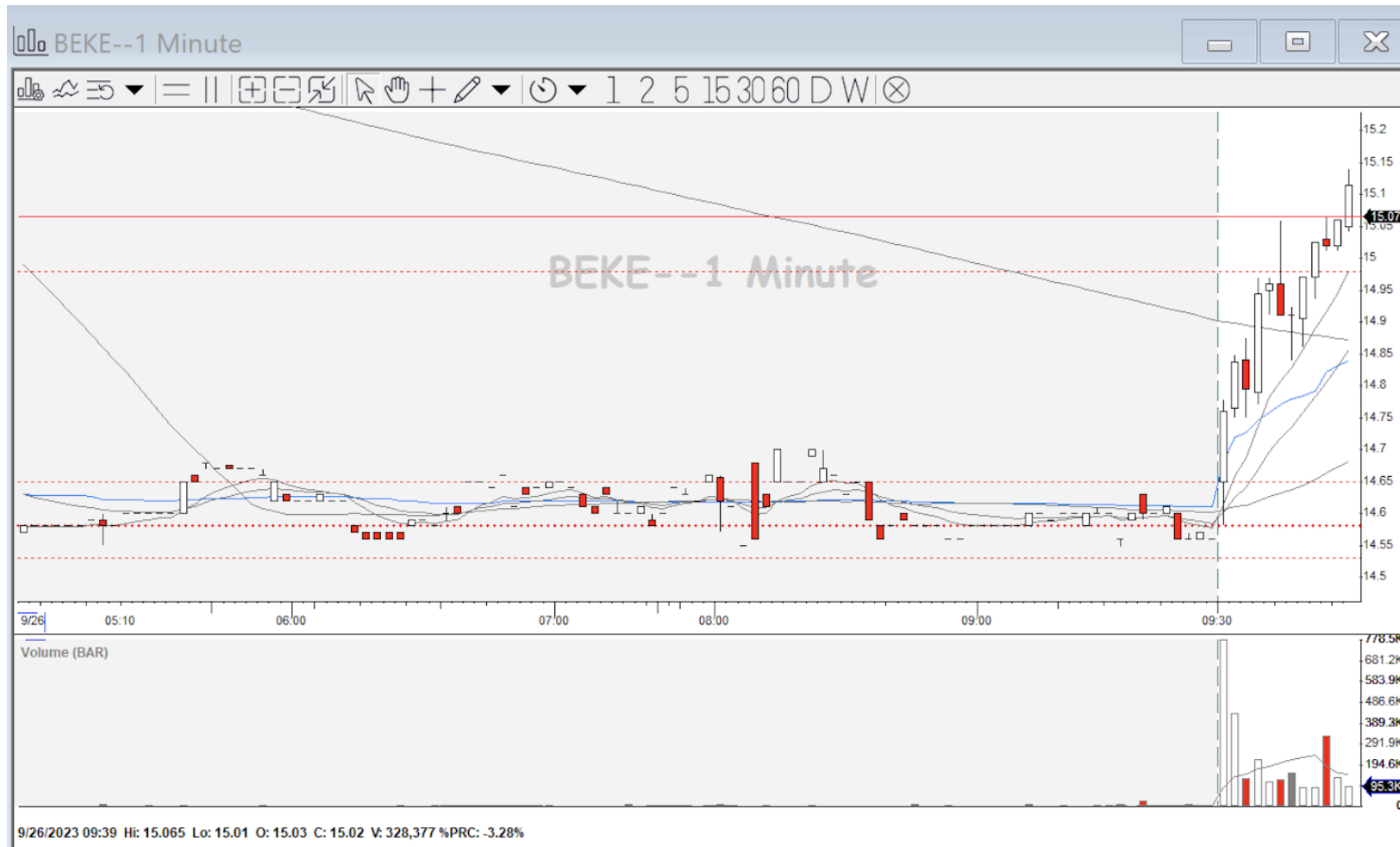
# Trade Execution



# Trade Execution



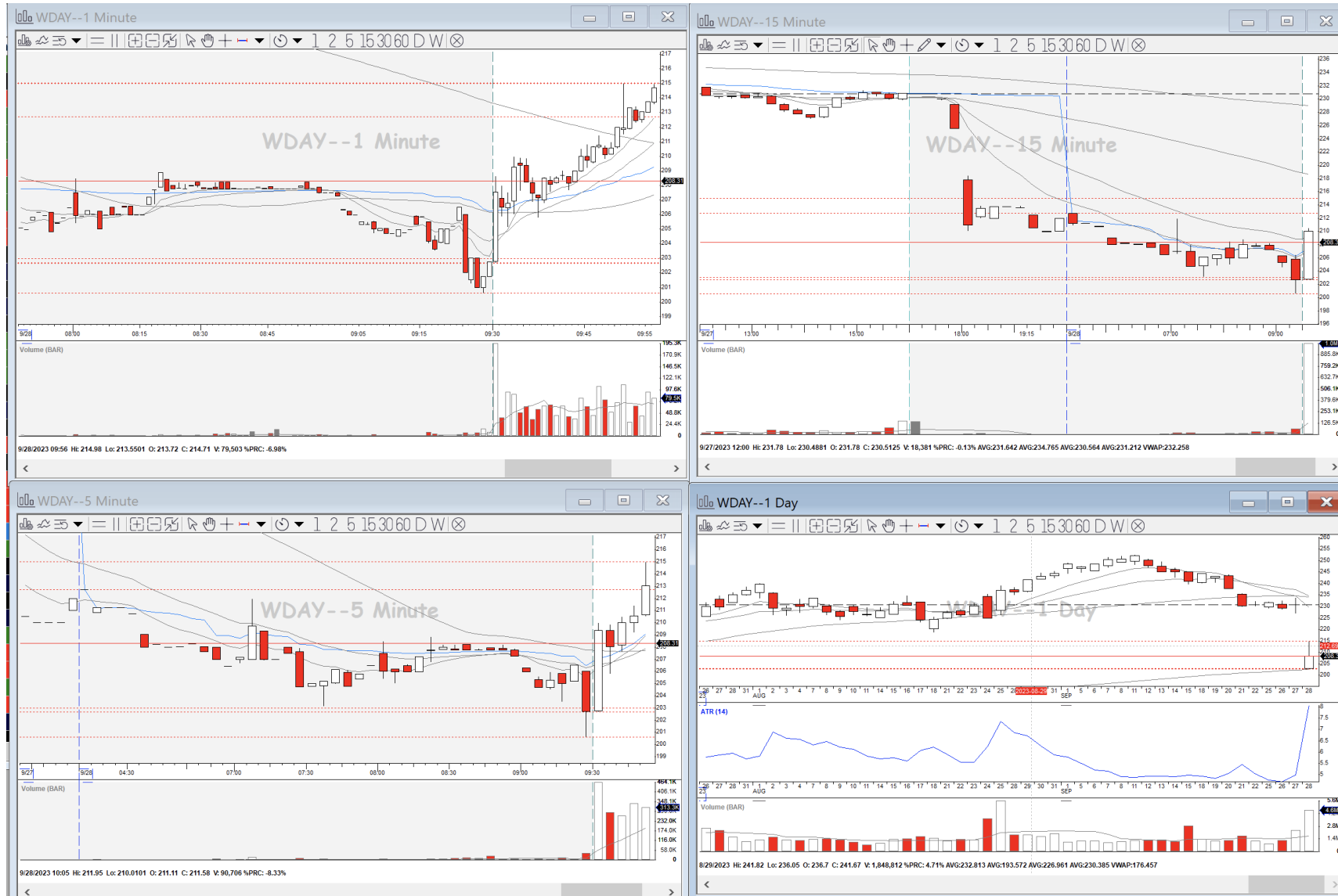
# Trade Execution



# Consideration Notes

- Less momentum in the 3<sup>rd</sup> 4<sup>th</sup> and 5<sup>th</sup> move up (diminishing winrate)
- Winrate the highest when trading the 2<sup>nd</sup> move
- Never enter extended
- Secret of the continuation setup is to not enter at the breakout
- Volume price analysis

# Trade Execution



# Trade Execution



# Trade Execution

- Senior trader at Peak Capital Trading
- If you have any questions, or in case you are looking for feedback, just send me an e-mail:  
[Lenny@peakcapitaltrading.com](mailto:Lenny@peakcapitaltrading.com)