



Leveraging Scanners for the High of Day Break Strategy

PRESENTED BY:

Mike B.

DISCLAIMER

BearBullTraders.com employees, contractors, shareholders and affiliates, are **NOT an investment advisory service, a registered investment advisor or a broker-dealer** and does not undertake to advise clients on which securities they should buy or sell for themselves.

You understand that **NO content published as part of the Bear Bull Trading Room and its Website constitutes a recommendation** that any particular investment, security, portfolio of securities, transaction or investment strategy is suitable for any specific person.

You further understand that **none of the creators or providers of our Services or their affiliates will advise you personally** concerning the nature, potential, value or suitability of any particular investment, security, portfolio of securities, transaction, investment strategy or other matter.

Mike Baehr

- History Prior to Trading:
 - 23 Years in United State Marine Corps
 - Curriculum Developer
 - BA in Accounting
 - MS in Forensic Accounting
- Trading History:
 - Started Trading in 2008
 - Began Day Trading in 2018
 - Join Bear Bull Traders in 2020
- Trading Strategies:
 - Break High of Day
 - Failed High of Day Break
- Hobbies:
 - Volunteer in the Local Community
 - Cooking
 - Running (Soccer Referee)

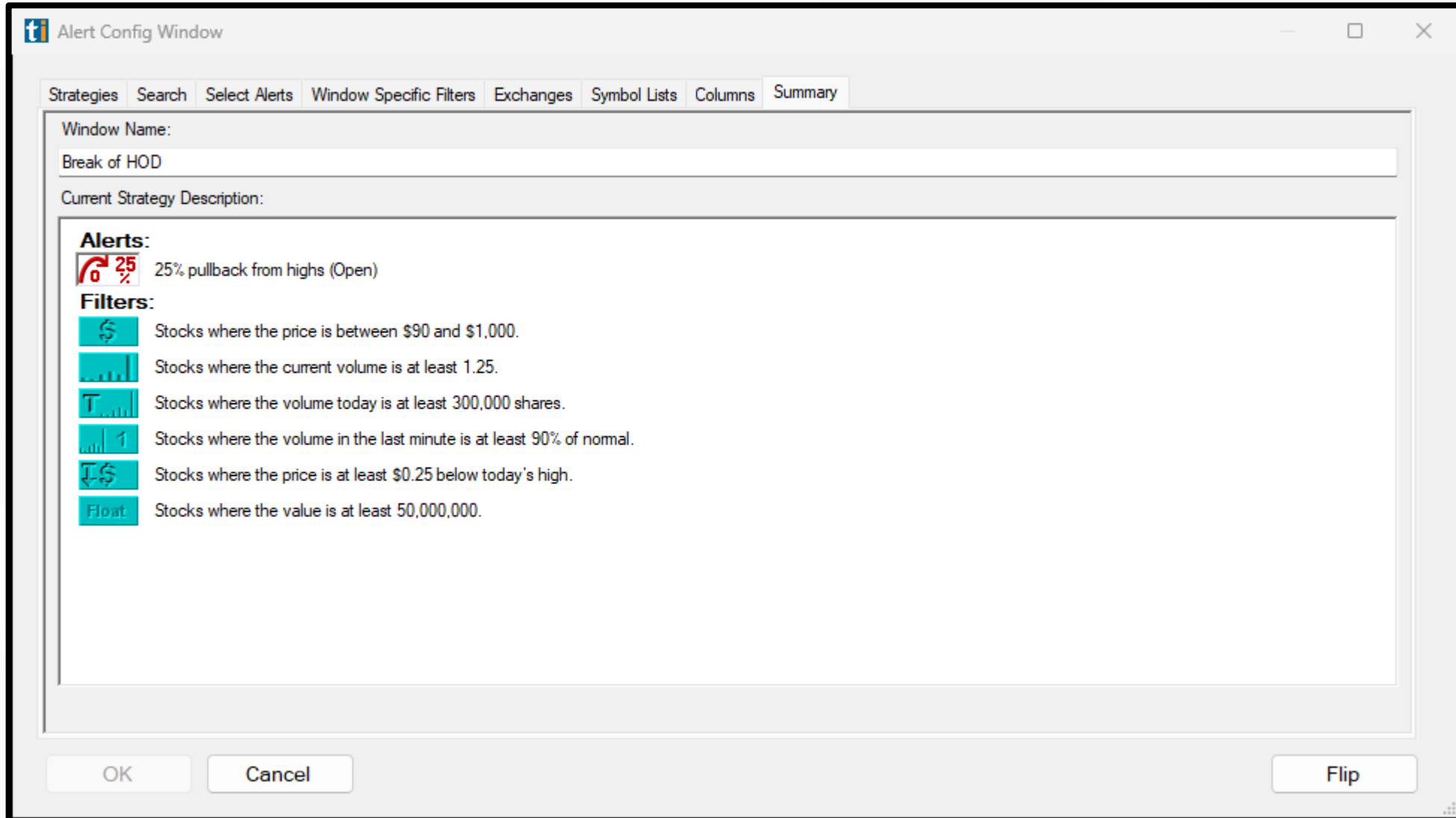


Overview

- Scanner Settings
- Philosophy of the Trade
- Trading Results
- Stock Selection
- Setup Identification
- Trade Execution
- Special Considerations
- Examples



Scanner Settings



Philosophy of the Trade

- Scanners Provide an Indication of a Strong Pullback from HOD
- 82.50% Win Rate with Criteria Met (BHOD)
- 36.36% Win Rate with Trading Outside Criteria (BHOD)
- Key Confirmation is Rising Volume into Break
- Key Risk Management is Exiting on a New 1-Minute Low
- This is Scalping Strategy
 - It either works right away or you better get out.



Trading Results

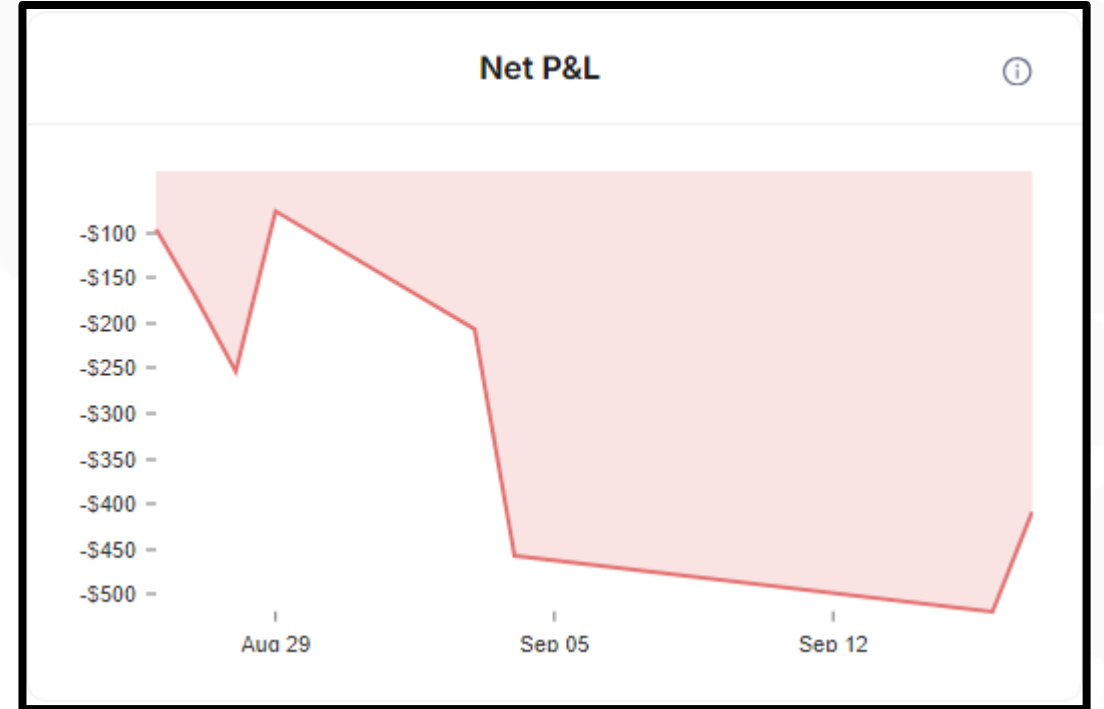
- August 26, 2024 through September 20, 2024 (51 Trades)
- Winning Percentage: 82.50%
- Average Winner: \$143.65
- Average Loser: \$45.25
- Average Trades: 2.5
- Discipline Percentage: 78.43%
- Average Winner/Loser: 1:3.17



Trading Results



Category 1 & 2



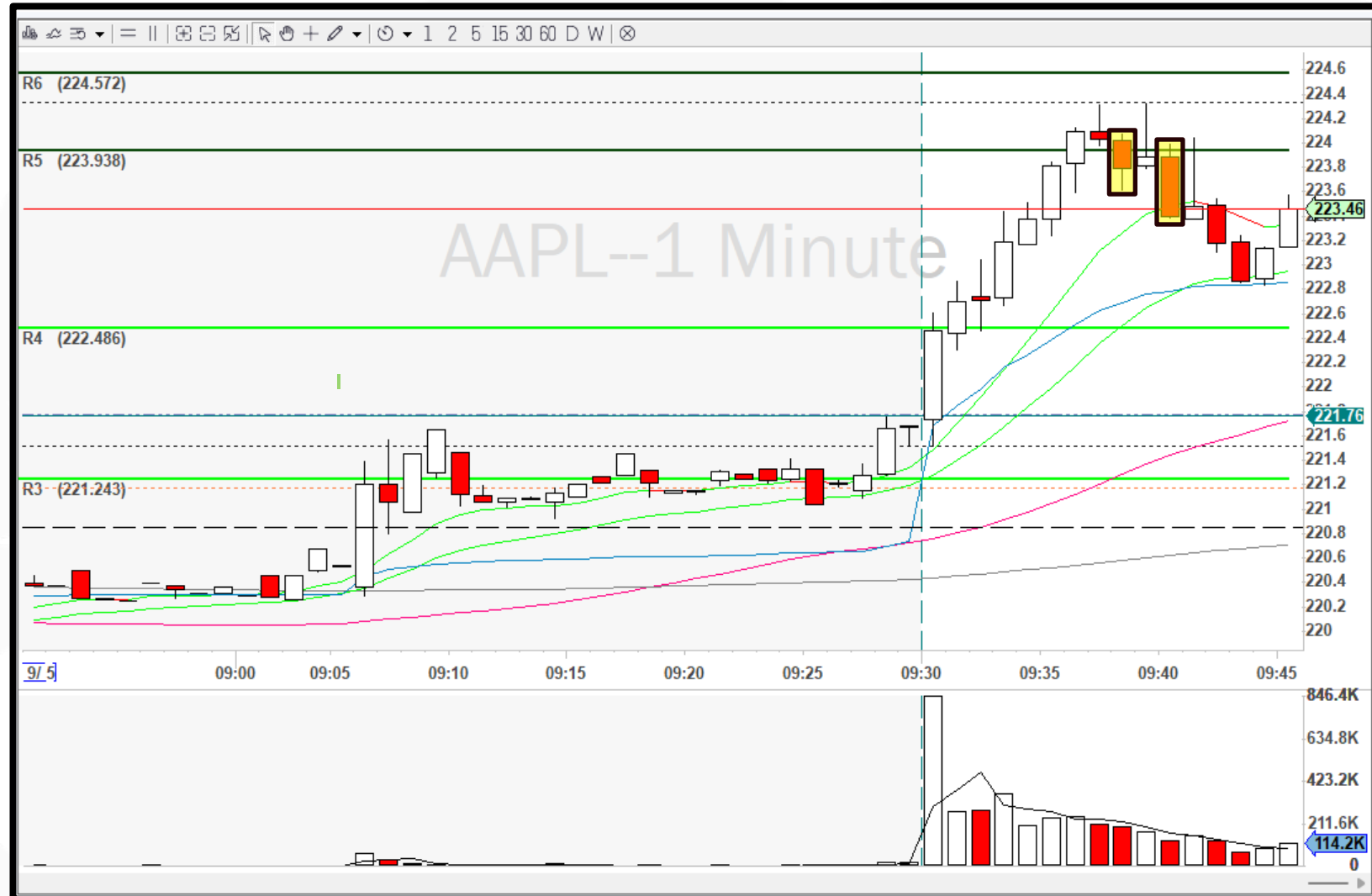
Category 3 & 4

Stock Selection

- Stock Hits the Scanner

History: Break of HOD

Time	Type	Symbol	Rel Vol	Flt (Shr)	Vol 1 Min	Vol Today	Vol Today	Chg Close
3:38	0 25%	ORCL	2.06	1.60B	294.9	136.1	6.64M	1.5
10:48	0 25%	AMZN	1.31	9.35B	155.0	45.7	14.45M	3.1
10:46	0 25%	ORCL	1.63	1.60B	226.0	33.3	1.62M	1.4
10:45	0 25%	TSLA	1.74	2.78B	215.5	67.1	47.03M	5.8
10:29	0 25%	ORCL	1.43	1.60B	145.7	24.5	1.19M	1.1
10:13	0 25%	AMZN	1.34	9.35B	218.5	30.9	9.76M	2.7
10:10	0 25%	NVDA	1.42	23.6B	139.8	23.6	86.70M	2.1
10:04	0 25%	ROKU	2.68	126M	243.5	30.8	1.20M	7.0
9:46	0 25%	COIN	1.80	191M	167.0	13.6	898.5K	1.2
9:43	0 25%	COIN	1.94	191M	287.3	12.3	813.2K	0.8
9:43	0 25%	AMZN	2.07	9.35B	161.4	16.6	5.25M	2.4
9:41	0 25%	GOOGL	1.56	5.84B	207.5	10.2	2.06M	1.4
9:41	0 25%	TSLA	4.12	2.78B	398.7	22.0	15.41M	3.8
9:40	0 25%	NVDA	2.90	23.6B	291.8	12.0	43.98M	1.6
9:40	0 25%	META	1.51	2.18B	182.8	9.8	1.01M	1.1
9:40	0 25%	AAPL	2.17	15.5B	172.9	10.9	4.57M	1.3
9:40	0 25%	COIN	2.26	191M	232.8	10.3	680.0K	0.7
9:39	0 25%	MSFT	1.83	7.42B	159.5	8.2	1.42M	0.7
9:38	0 25%	AAPL	2.45	15.5B	273.2	9.9	4.17M	1.3
9:36	0 25%	TSM	1.32	24.2B	171.4	5.8	680.4K	1.0
9:35	0 25%	COIN	2.84	191M	231.0	7.6	501.0K	0.2
9:34	0 25%	NVDA	4.01	23.6B	264.3	7.6	28.01M	0.3



Setup Identification

- Time: 0933 – 1030
- Indicators
 - Pullback
 - Smooth Volume
 - Significant Level
 - Level 2 Stacking on Ask Side
 - RVOL 90%



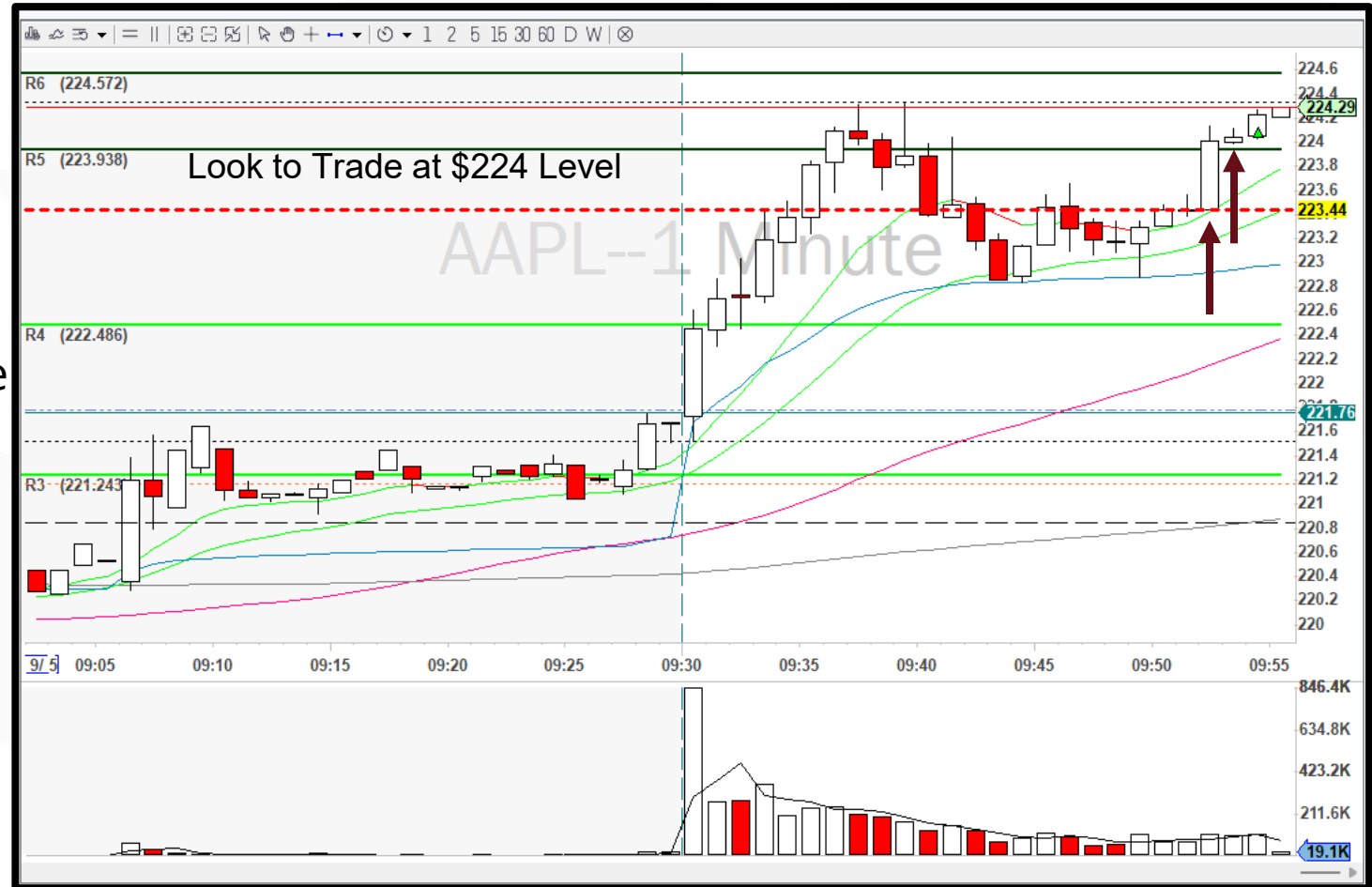
Setup Identification

- Time: 0933 – 1030
- Indicators
 - Pullback
 - Smooth Volume
 - Significant Level
 - Level 2 Stacking on Ask Side
 - RVOL 90%
- Confirmations
 - No Consolidation
 - Begins to Punch
 - Rising Volume



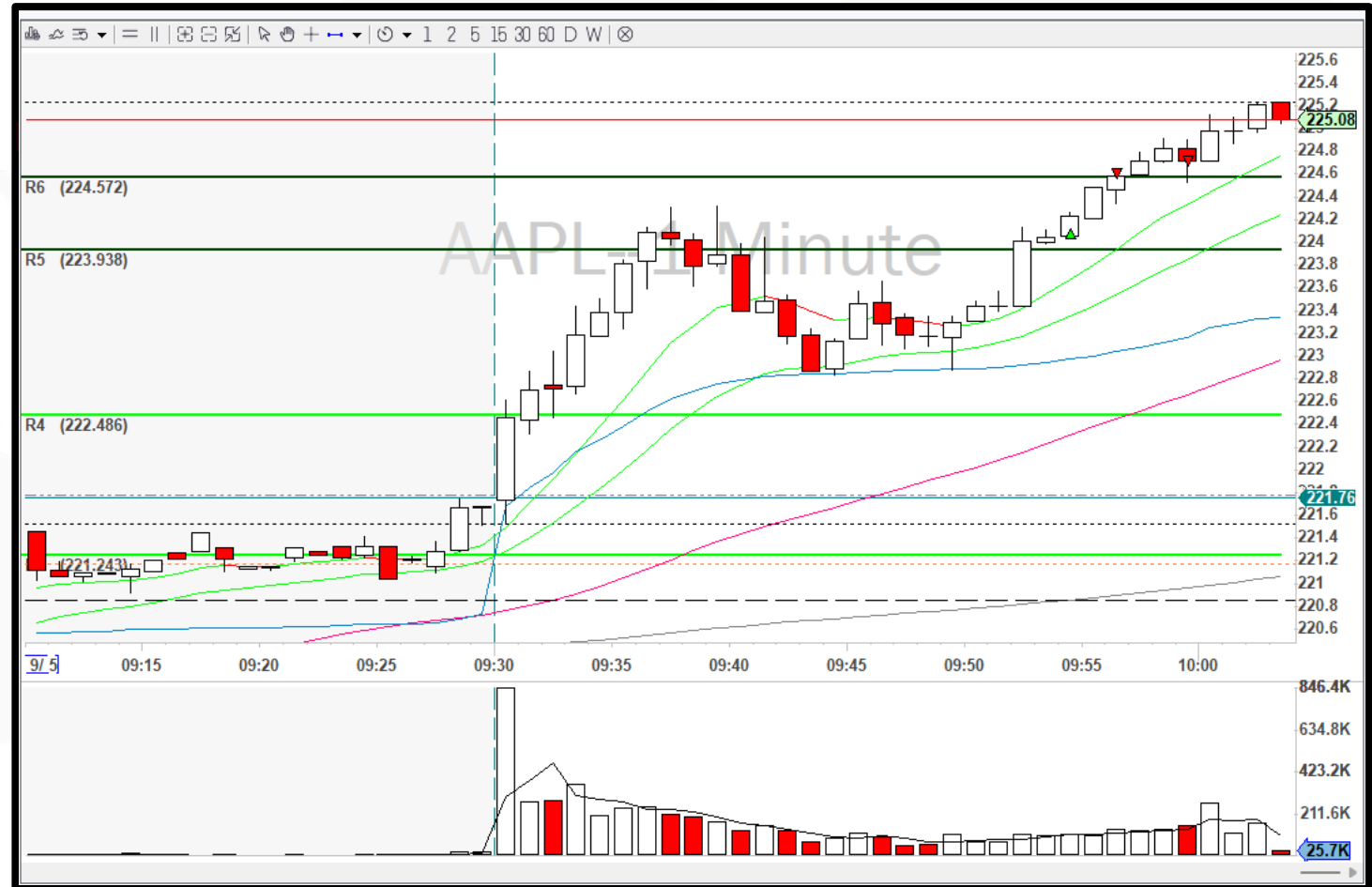
Trade Execution

- Entry Signal
 - Break of a Significant Level
- Stop Loss:
 - Open of 2 Previous Candles For Size
 - Move to New 1-Minute Low



Trade Execution

- Entry Signal
 - Break of a Significant Level
- Stop Loss:
 - Open of Previous Candle
 - Move to New 1-Minute Low
- Targets:
 - Profit Target 1R Move from Original Stop
 - Partial at Significant Levels
 - All Out: B/E or New 1-Minute Low



Consideration Notes

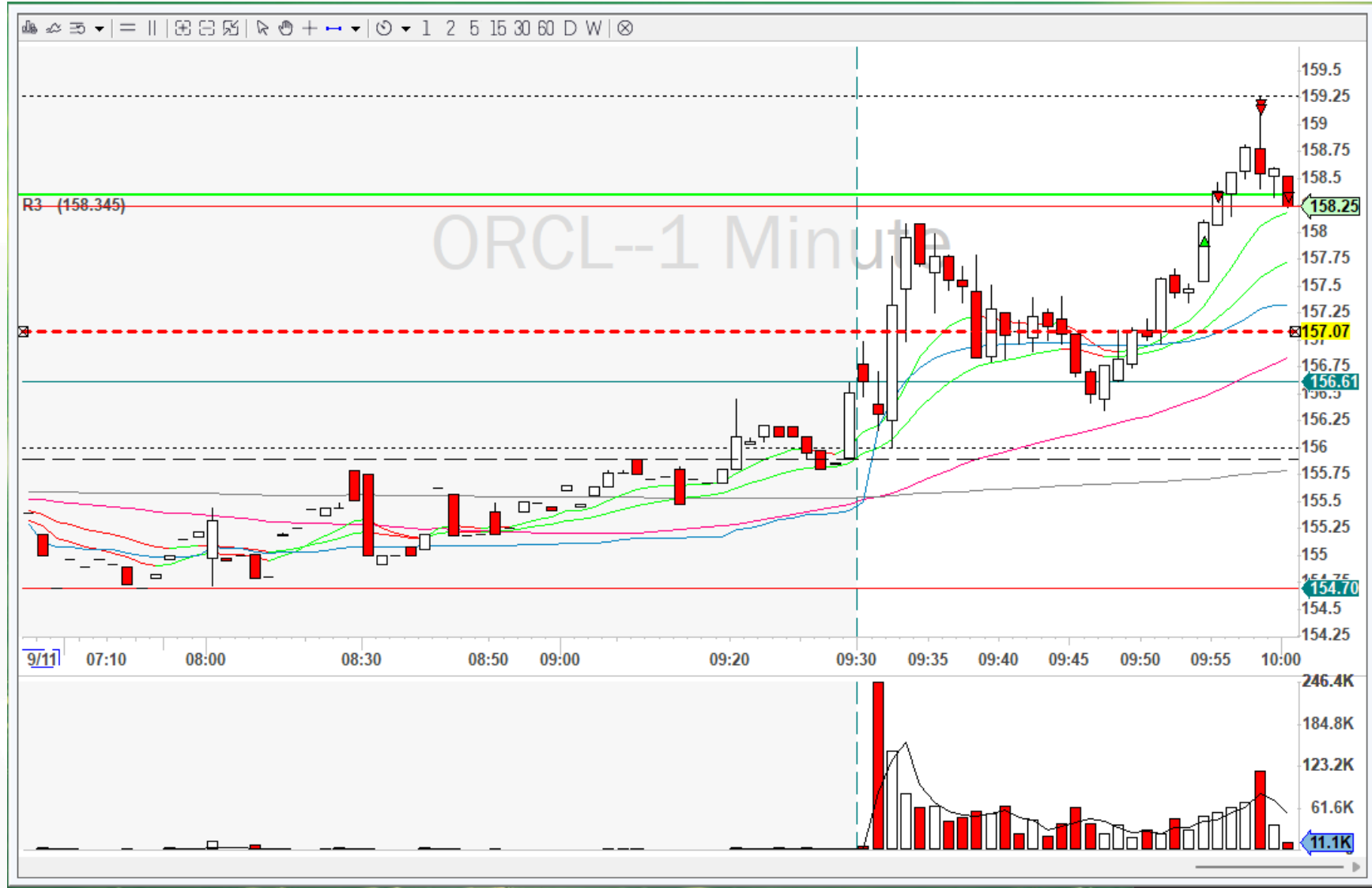
- This is a Scalping Strategy
- It Should Work Right Away
- Do Not Hold
- Move Stop to B/E after 1st Partial
- Can't Get Mad
- Volume (30 Seconds)



Examples

History: Break of HOD

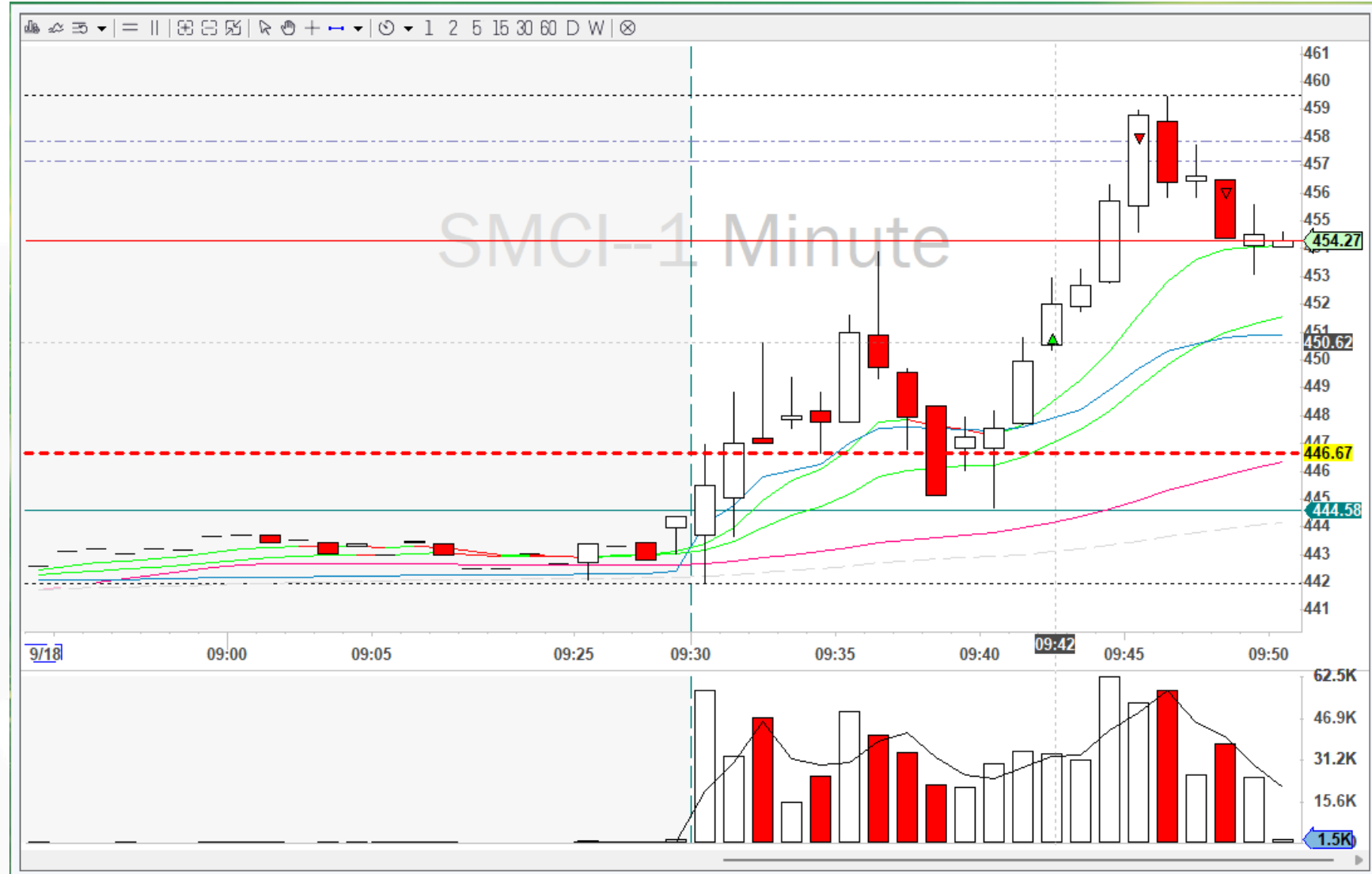
Time	Type	Symbol	Rel Vol	Fit (Shr)	Vol 1 Min	Vol Today	Vol Today	Chg Close	Ve M
3:40	↻ 25%	JPM	1.73	2.86B	105.5	98.5	9.48M	0.7	9
2:51	↻ 25%	JPM	1.77	2.86B	104.8	88.5	8.52M	0.5	7
1:20	↻ 25%	JPM	1.84	2.86B	122.7	73.3	7.05M	0.1	8
10:09	↻ 25%	ORCL	2.57	1.60B	124.2	23.4	2.58M	1.8	14
9:58	↻ 25%	ORCL	2.72	1.60B	502.7	18.9	2.08M	1.7	29
9:52	↻ 25%	BIDU	1.73	2.25B	162.0	22.9	410.5K	2.0	18
9:45	↻ 25%	NVDA	2.06	23.6B	191.4	13.0	47.52M	3.0	19
9:40	↻ 25%	NVDA	2.53	23.6B	226.7	10.0	36.45M	2.7	19
9:40	↻ 25%	TSM	1.97	24.2B	246.1	12.5	1.50M	2.1	24
9:34	↻ 25%	TSM	2.92	24.2B	362.7	8.5	1.02M	1.8	51
9:34	↻ 25%	NVDA	4.00	23.6B	243.8	6.5	23.64M	2.2	27
9:34	↻ 25%	ORCL	6.91	1.60B	287.2	5.9	652.3K	1.1	8
9:34	↻ 25%	AAPL	3.68	15.5B	263.8	6.3	3.02M	1.1	30
9:33	↻ 25%	COIN	6.73	191M	102.4	8.7	619.5K	-3.0	22
9:32	↻ 25%	ORCL	8.06	1.60B	1,434	4.9	542.7K	1.0	30
9:32	↻ 25%	ORCL	8.06	1.60B	1,379	4.8	527.0K	0.8	29
9:32	↻ 25%	META	5.20	2.18B	225.9	8.4	821.2K	0.5	15
9:32	↻ 25%	ORCL	8.78	1.60B	1,284	4.5	490.4K	0.8	27
9:32	↻ 25%	AAPL	5.37	15.5B	367.9	5.4	2.59M	1.0	23
9:32	↻ 25%	ORCL	9.05	1.60B	1,276	4.4	488.2K	0.8	27
9:32	↻ 25%	META	5.83	2.18B	204.0	8.2	804.6K	0.5	14
9:32	↻ 25%	AAPL	5.72	15.5B	320.4	5.2	2.49M	1.0	21
9:32	↻ 25%	NVDA	6.41	23.6B	348.4	5.3	19.39M	2.0	18
9:32	↻ 25%	COIN	10.86	191M	142.3	8.3	595.8K	-3.0	21
9:31	↻ 25%	MSFT	5.60	7.42B	338.7	4.3	753.6K	0.5	25



Examples

History: Break of HOD

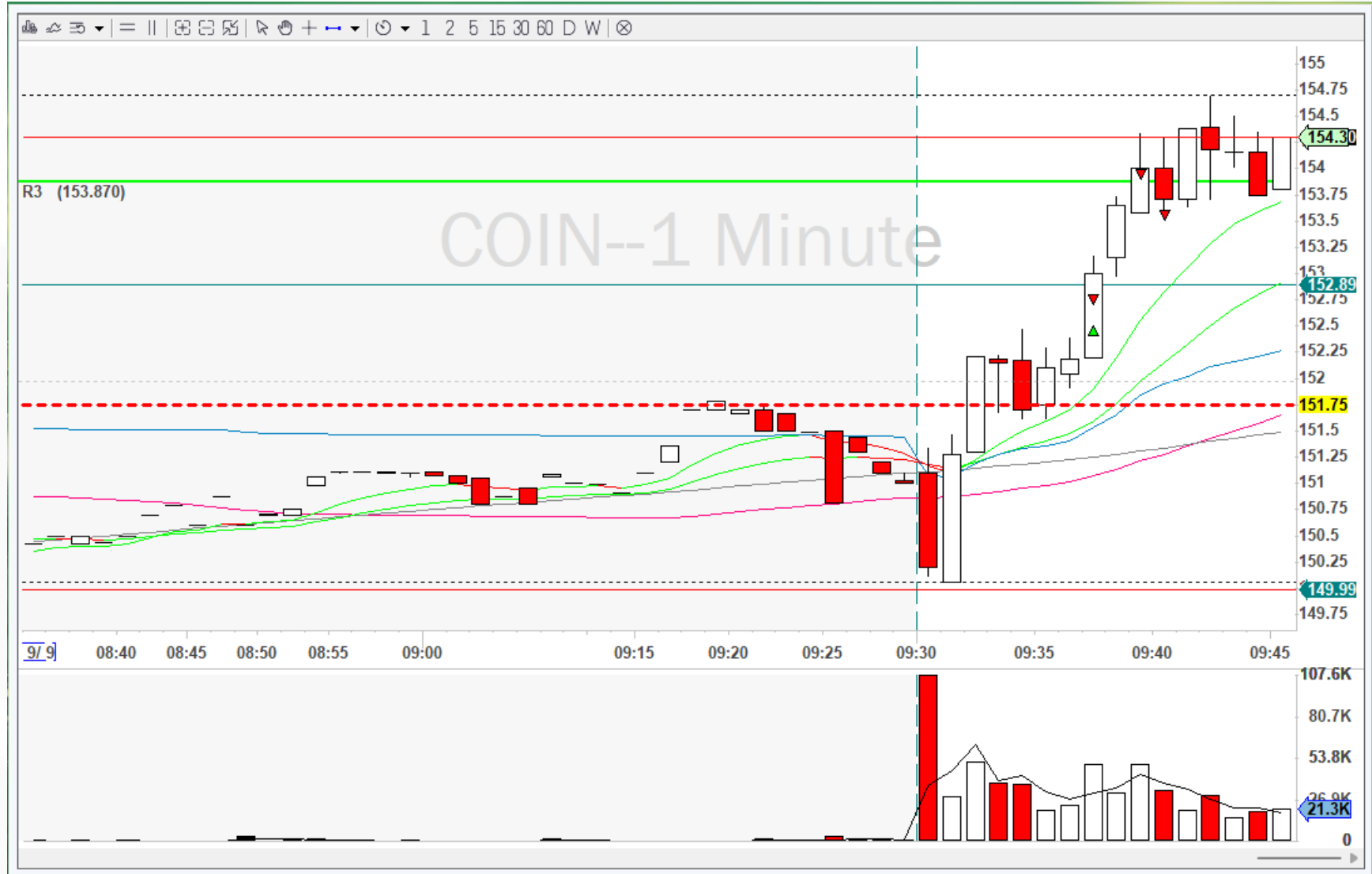
Time	Type	Symbol	Rel Vol	Fit (Shr)	Vol 1 Min	Vol Today	Vol Today	Chg Close	Vol 5 Min
1:44	🔴	CVNA	1.55	115M	209.2	84.3	2.63M	2.8	103.5
1:37	🔴	MTZ	1.48	60.8M	147.2	50.1	431.9K	1.2	105.9
1:33	🔴	SWK	1.54	153M	133.5	60.2	637.1K	1.3	94.1
1:32	🔴	WST	1.69	72.1M	532.6	101.3	354.0K	3.8	134.3
12:31	🔴	TMUS	1.67	482M	1,759	48.6	1.71M	1.2	1,251
12:29	🔴	TMUS	1.37	482M	1,162	39.5	1.39M	1.1	723.9
11:30	🔴	SWK	1.74	153M	546.7	35.8	379.7K	1.2	202.3
11:23	🔴	CVNA	1.65	115M	115.3	53.4	1.67M	2.6	93.2
11:16	🔴	SWK	1.70	153M	193.2	31.8	337.0K	1.2	52.9
10:50	🔴	MSTR	1.67	174M	256.2	47.5	4.63M	1.5	437.6
10:41	🔴	MSTR	1.35	174M	554.2	35.1	3.42M	0.4	217.7
10:32	🔴	CVNA	1.68	115M	126.7	33.2	1.04M	2.1	226.3
10:23	🔴	CVNA	1.66	115M	106.6	28.6	892.7K	2.0	226.1
10:14	🔴	HUM	2.57	122M	151.4	24.3	435.8K	0.9	84.1
10:11	🔴	AAPL	1.31	15.2B	157.5	19.2	9.05M	1.1	129.0
10:05	🔴	HUM	2.83	122M	218.9	21.1	379.2K	0.5	241.3
10:00	🔴	DASH	12.12	349M	119.1	105.6	2.76M	1.7	193.2
10:00	🔴	ELF	1.42	54.1M	109.4	13.9	407.0K	4.0	106.3
9:56	🔴	ENPH	2.38	131M	162.6	18.7	429.8K	1.9	196.8
9:54	🔴	DASH	15.26	349M	118.7	102.4	2.67M	1.6	102.4
9:53	🔴	CVNA	2.08	115M	155.6	15.8	492.8K	1.8	212.1
9:48	🔴	SMCI	1.25	50.2M	268.4	16.7	1.05M	3.7	371.2
9:46	🔴	DELL	1.61	292M	412.7	14.0	1.44M	2.0	284.3
9:46	🔴	VST	1.26	340M	196.6	6.8	340.6K	1.7	114.1
9:46	🔴	GE	2.17	1.08B	91.4	7.4	354.5K	1.1	86.8
9:41	🔴	CVNA	2.87	115M	433.0	9.8	305.1K	1.7	323.4
9:39	🔴	DASH	40.68	349M	133.7	99.6	2.60M	1.2	45.0
9:38	🔴	DELL	1.86	292M	478.5	7.9	809.9K	1.7	265.0
9:37	🔴	AAPL	2.80	15.2B	341.1	8.1	3.82M	1.0	256.7
9:36	🔴	SMCI	1.47	50.2M	549.0	6.9	433.2K	2.7	305.8
9:35	🔴	TTD	8.76	445M	966.4	17.4	487.6K	2.3	1,260
9:35	🔴	COP	5.16	1.18B	724.3	4.8	319.0K	0.2	245.8
9:34	🔴	DELL	2.18	292M	391.0	4.6	476.1K	1.6	298.5
9:33	🔴	META	2.94	2.20B	218.8	4.0	425.5K	0.5	178.5
9:32	🔴	AAPL	4.20	15.2B	306.1	4.7	2.21M	1.0	281.3
9:32	🔴	META	3.15	2.20B	206.3	3.7	394.9K	0.3	156.7
9:32	🔴	TTD	14.19	445M	3,737	11.9	332.6K	2.0	922.0



Examples

History: Break of HOD

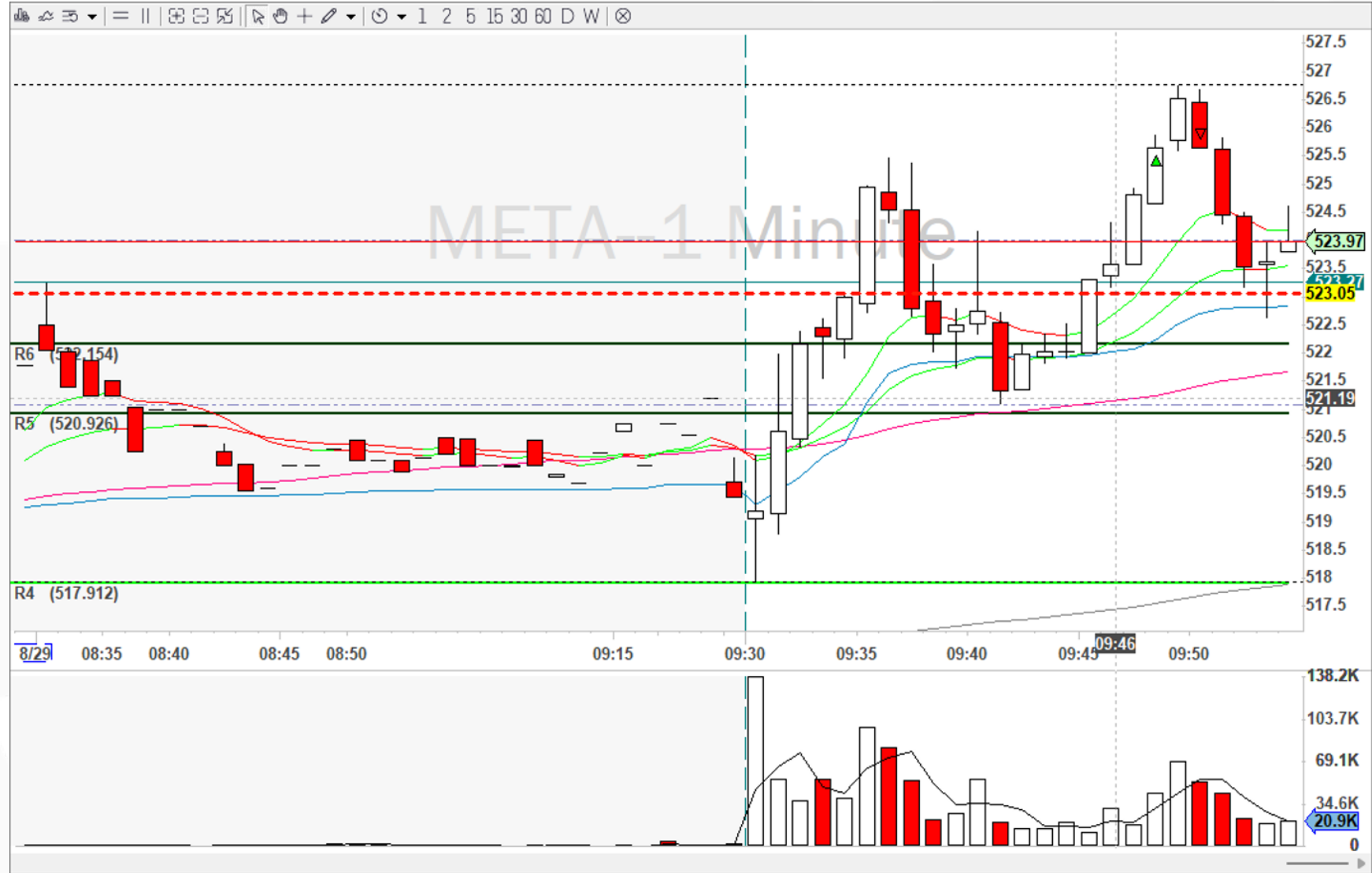
Time	Type	Symbol	Rel Vol	Flt (Shr)	Vol 1 Min	Vol Today	Vol Today	Chg Close
1:49	🔻	CVX	1.26	1.87B	347.7	70.1	4.71M	1.9
10:32	🔻	MRNA	1.75	347M	281.3	42.6	1.51M	6.3
10:15	🔻	COIN	1.75	191M	118.0	36.0	2.53M	5.7
10:05	🔻	TSLA	1.36	2.78B	214.6	23.7	18.52M	3.8
10:01	🔻	JPM	1.34	2.86B	153.0	14.8	1.06M	1.7
9:56	🔻	META	1.27	2.18B	213.1	20.7	2.03M	1.9
9:53	🔻	META	1.32	2.18B	171.5	19.5	1.91M	1.9
9:51	🔻	JPM	1.52	2.86B	167.3	11.5	818.7K	1.6
9:47	🔻	NFLX	1.64	426M	111.1	12.4	304.7K	2.3
9:44	🔻	MSFT	1.47	7.42B	102.4	10.0	1.70M	1.6
9:44	🔻	META	1.64	2.18B	208.4	15.1	1.47M	1.6
9:42	🔻	COIN	3.12	191M	243.1	16.5	1.16M	4.4
9:42	🔻	TSLA	2.46	2.78B	255.0	12.7	9.92M	3.6
9:40	🔻	COIN	3.49	191M	333.4	15.4	1.08M	4.2
9:39	🔻	MSFT	1.85	7.42B	158.8	8.4	1.43M	1.6
9:39	🔻	TSLA	2.80	2.78B	245.1	10.8	8.48M	3.5
9:38	🔻	CVX	2.38	1.87B	281.1	7.0	469.5K	0.7
9:38	🔻	TSLA	2.95	2.78B	305.5	10.3	8.07M	3.5
9:36	🔻	GOOGL	2.42	5.84B	174.9	7.6	1.61M	1.5
9:36	🔻	TSLA	3.31	2.78B	380.3	8.7	6.80M	3.2
9:35	🔻	TSM	2.10	24.2B	296.1	7.0	833.5K	3.2
9:35	🔻	TSLA	3.49	2.78B	484.6	7.8	6.10M	3.2
9:34	🔻	COIN	5.65	191M	240.0	11.5	807.8K	3.2
9:34	🔻	TSLA	3.56	2.78B	470.7	7.1	5.55M	3.0
9:34	🔻	NVDA	3.37	23.6B	230.6	5.8	21.79M	3.2
9:34	🔻	TSLA	3.55	2.78B	433.9	6.9	5.43M	2.9
9:34	🔻	BA	13.65	583M	1,112	20.0	1.23M	4.0
9:33	🔻	MSFT	3.12	7.42B	194.6	5.3	902.9K	1.6
9:33	🔻	BA	14.78	583M	1,478	17.5	1.08M	3.9
9:33	🔻	COIN	7.94	191M	335.7	10.3	721.1K	3.1



Examples

History: Break of HOD

Time	Type	Symbol	Rel Vol	Flt (Shr)	Vol 1 Min	Vol Today	Vol Today	Chg Close	Vol 5 Min
9:50	25%	QCOM	5.21	1.11B	191.5	48.6	3.38M	2.1	143.2
9:42	25%	MSFT	1.43	7.42B	135.8	8.6	1.47M	1.6	125.3
9:42	25%	QCOM	8.08	1.11B	260.0	45.7	3.17M	2.0	160.1
9:41	25%	AAPL	3.04	15.5B	368.7	18.8	7.23M	2.0	399.2
9:41	25%	TSLA	2.05	2.78B	217.9	10.9	8.15M	3.4	249.3
9:39	25%	MU	3.18	1.10B	210.4	13.7	2.82M	2.7	266.8
9:39	25%	AMD	2.14	1.61B	188.3	7.7	3.59M	1.6	195.8
9:39	25%	TSLA	2.17	2.78B	236.3	9.1	6.82M	3.3	240.5
9:38	25%	AAPL	3.35	15.5B	533.3	15.9	6.09M	1.9	400.2
9:37	25%	MSFT	1.82	7.42B	287.2	7.0	1.19M	1.5	174.5
9:37	25%	MU	3.57	1.10B	465.5	12.9	2.65M	2.7	301.1
9:37	25%	TSM	2.71	24.2B	316.1	15.3	1.77M	1.0	400.5
9:37	25%	META	1.72	2.18B	224.0	7.7	855.7K	1.4	276.6
9:37	25%	COIN	1.66	191M	168.6	5.6	383.0K	2.7	113.5
9:36	25%	COIN	1.76	191M	175.4	5.2	356.9K	2.6	136.6
9:36	25%	MSFT	2.01	7.42B	184.7	6.0	1.03M	1.4	149.6
9:35	25%	NVDA	7.77	23.6B	509.6	17.7	57.90M	-1.6	488.8
9:35	25%	SQ	2.10	544M	443.9	5.9	301.9K	2.3	404.7



Example Did not Work

History: Break of HOD

Time	Type	Symbol	Rel Vol	Fit (Shr)	Vol 1 Min	Vol Today	Vol Today	Chg Close
10:06	🔻	TSLA	1.51	2.78B	248.1	27.6	21.20M	3.9
10:00	🔻	TSLA	1.54	2.78B	383.8	24.0	18.42M	1.9
9:53	🔻	TSLA	1.70	2.78B	355.6	19.3	14.80M	1.9
9:50	🔻	TSLA	1.74	2.78B	228.2	17.2	13.23M	3.1
9:49	🔻	META	1.46	2.18B	125.3	17.2	1.68M	1.5
9:47	🔻	ORCL	27.28	1.60B	2,039	107.8	8.12M	13.7
9:46	🔻	MSFT	1.54	7.42B	159.7	11.4	1.91M	1.8
9:43	🔻	JNJ	2.54	2.40B	94.2	9.8	622.9K	0.9
9:41	🔻	BA	2.15	583M	1,321	8.8	588.4K	0.4
9:41	🔻	BA	2.11	583M	1,226	8.6	571.6K	0.3
9:41	🔻	BA	2.08	583M	1,155	8.4	559.4K	0.1
9:41	🔻	BA	2.03	583M	1,070	8.2	544.8K	0.2
9:41	🔻	BA	2.01	583M	1,049	8.1	541.1K	0.2
9:40	🔻	ORCL	25.54	1.60B	2,307	62.6	4.72M	12.1
9:38	🔻	ORCL	26.08	1.60B	2,089	49.8	3.76M	11.7
9:37	🔻	ORCL	26.36	1.60B	2,454	46.7	3.52M	11.5
9:37	🔻	ORCL	26.44	1.60B	2,423	44.3	3.34M	11.4
9:36	🔻	TSLA	2.97	2.78B	307.4	8.9	6.83M	3.0
9:36	🔻	MSFT	2.34	7.42B	199.6	6.7	1.12M	1.6
9:36	🔻	ORCL	25.78	1.60B	8,045	36.9	2.78M	11.1
9:36	🔻	ORCL	25.50	1.60B	7,886	36.5	2.75M	11.0
9:36	🔻	ORCL	25.49	1.60B	7,841	36.4	2.74M	10.8
9:35	🔻	META	3.40	2.18B	376.0	12.1	1.18M	1.5
9:35	🔻	AMZN	2.78	9.35B	458.3	8.6	2.85M	2.1
9:34	🔻	AMZN	2.88	9.35B	274.7	7.5	2.49M	2.0
9:33	🔻	ORCL	17.72	1.60B	328.6	15.3	1.15M	10.6
9:33	🔻	TSLA	4.08	2.78B	370.6	6.0	4.60M	2.7
9:33	🔻	NVDA	3.80	23.6B	267.8	4.7	17.56M	2.4
9:31	🔻	TSLA	5.38	2.78B	450.8	4.6	3.52M	2.4



Example Did not Work

History: Break of HOD

Time	Type	Symbol	Rel Vol	Fit (Shr)	Vol 1 Min	Vol Today	Vol Today	Chg Close
1:49	🔻	CVX	1.26	1.87B	347.7	70.1	4.71M	1.9
10:32	🔻	MRNA	1.75	347M	281.3	42.6	1.51M	6.3
10:15	🔻	COIN	1.75	191M	118.0	36.0	2.53M	5.7
10:05	🔻	TSLA	1.36	2.78B	214.6	23.7	18.52M	3.8
10:01	🔻	JPM	1.34	2.86B	153.0	14.8	1.06M	1.7
9:56	🔻	META	1.27	2.18B	213.1	20.7	2.03M	1.9
9:53	🔻	META	1.32	2.18B	171.5	19.5	1.91M	1.9
9:51	🔻	JPM	1.52	2.86B	167.3	11.5	818.7K	1.6
9:47	🔻	NFLX	1.64	426M	111.1	12.4	304.7K	2.3
9:44	🔻	MSFT	1.47	7.42B	102.4	10.0	1.70M	1.6
9:44	🔻	META	1.64	2.18B	208.4	15.1	1.47M	1.6
9:42	🔻	COIN	3.12	191M	243.1	16.5	1.16M	4.4
9:42	🔻	TSLA	2.46	2.78B	255.0	12.7	9.92M	3.6
9:40	🔻	COIN	3.49	191M	333.4	15.4	1.08M	4.2
9:39	🔻	MSFT	1.85	7.42B	158.8	8.4	1.43M	1.6
9:39	🔻	TSLA	2.80	2.78B	245.1	10.8	8.48M	3.5
9:38	🔻	CVX	2.38	1.87B	281.1	7.0	469.5K	0.7
9:38	🔻	TSLA	2.95	2.78B	305.5	10.3	8.07M	3.5
9:36	🔻	GOOGL	2.42	5.84B	174.9	7.6	1.61M	1.5
9:36	🔻	TSLA	3.31	2.78B	380.3	8.7	6.80M	3.2
9:35	🔻	TSM	2.10	24.2B	296.1	7.0	833.5K	3.2
9:35	🔻	TSLA	3.49	2.78B	484.6	7.8	6.10M	3.2
9:34	🔻	COIN	5.65	191M	240.0	11.5	807.8K	3.2
9:34	🔻	TSLA	3.56	2.78B	470.7	7.1	5.55M	3.0
9:34	🔻	NVDA	3.37	23.6B	230.6	5.8	21.79M	3.2
9:34	🔻	TSLA	3.55	2.78B	433.9	6.9	5.43M	2.9
9:34	🔻	BA	13.65	583M	1,112	20.0	1.23M	4.0
9:33	🔻	MSFT	3.12	7.42B	194.6	5.3	902.9K	1.6
9:33	🔻	BA	14.78	583M	1,478	17.5	1.08M	3.9
9:33	🔻	COIN	7.94	191M	335.7	10.3	721.1K	3.1



Example Did not Work

History: Break of HOD

Time	Type	Symbol	Rel Vol	Fit (Shr)	Vol 1 Min	Vol Today	Vol Today	Chg Close
3:38	🔻	ORCL	2.06	1.60B	294.9	136.1	6.64M	1.5
10:48	🔻	AMZN	1.31	9.35B	155.0	45.7	14.45M	3.1
10:46	🔻	ORCL	1.63	1.60B	226.0	33.3	1.62M	1.4
10:45	🔻	TSLA	1.74	2.78B	215.5	67.1	47.03M	5.8
10:29	🔻	ORCL	1.43	1.60B	145.7	24.5	1.19M	1.1
10:13	🔻	AMZN	1.34	9.35B	218.5	30.9	9.76M	2.7
10:10	🔻	NVDA	1.42	23.6B	139.8	23.6	86.70M	2.1
10:04	🔻	ROKU	2.68	126M	243.5	30.8	1.20M	7.0
9:46	🔻	COIN	1.80	191M	167.0	13.6	898.5K	1.2
9:43	🔻	COIN	1.94	191M	287.3	12.3	813.2K	0.8
9:43	🔻	AMZN	2.07	9.35B	161.4	16.6	5.25M	2.4
9:41	🔻	GOOGL	1.56	5.84B	207.5	10.2	2.06M	1.4
9:41	🔻	TSLA	4.12	2.78B	398.7	22.0	15.41M	3.8
9:40	🔻	NVDA	2.90	23.6B	291.8	12.0	43.98M	1.6
9:40	🔻	META	1.51	2.18B	182.8	9.8	1.01M	1.1
9:40	🔻	AAPL	2.17	15.5B	172.9	10.9	4.57M	1.3
9:40	🔻	COIN	2.26	191M	232.8	10.3	680.0K	0.7
9:39	🔻	MSFT	1.83	7.42B	159.5	8.2	1.42M	0.7
9:38	🔻	AAPL	2.45	15.5B	273.2	9.9	4.17M	1.3
9:36	🔻	TSM	1.32	24.2B	171.4	5.8	680.4K	1.0
9:35	🔻	COIN	2.84	191M	231.0	7.6	501.0K	0.2
9:34	🔻	NVDA	4.01	23.6B	264.3	7.6	28.01M	0.3
9:34	🔻	AMD	1.78	1.61B	148.0	4.0	1.59M	-1.3
9:34	🔻	COIN	3.30	191M	163.8	6.8	453.0K	-0.1
9:34	🔻	MSFT	2.92	7.42B	215.8	5.6	959.7K	0.3
9:34	🔻	META	2.12	2.18B	445.7	5.1	527.1K	0.6
9:33	🔻	COIN	3.68	191M	438.6	6.5	432.1K	-0.3
9:33	🔻	AMD	1.99	1.61B	181.1	3.6	1.45M	-1.4
9:33	🔻	TSLA	6.67	2.78B	626.9	12.5	8.74M	2.6
9:33	🔻	COIN	3.97	191M	468.5	6.4	424.2K	-0.3





**TRADING TERMINAL
ACADEMY**

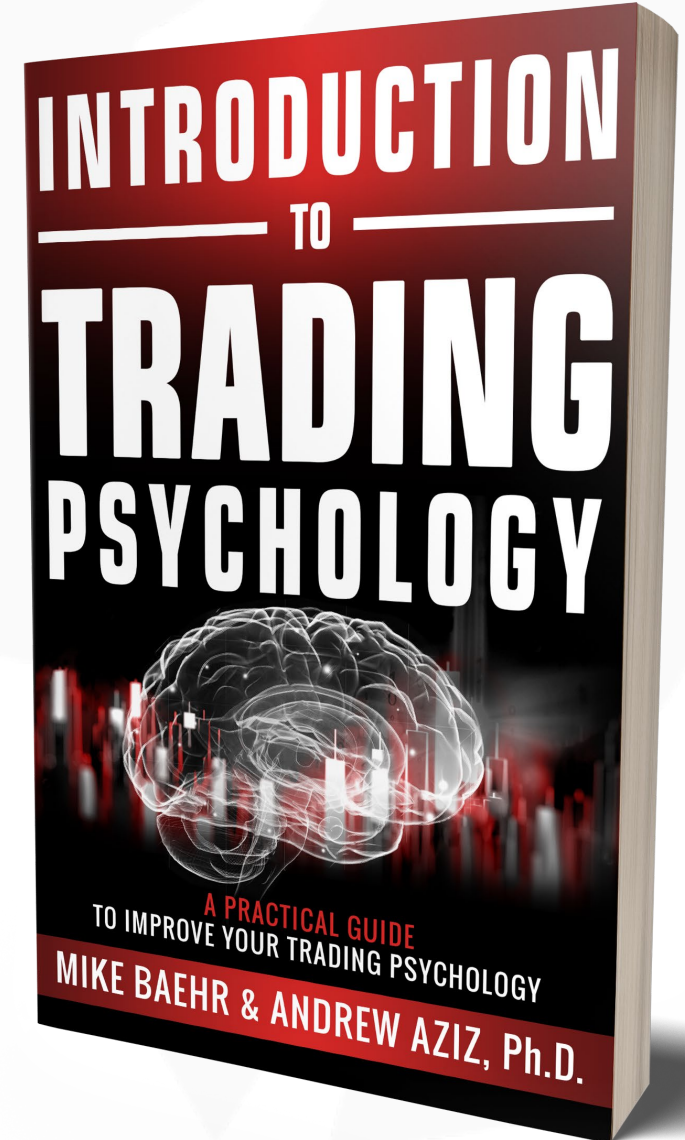
INCLUDES: 1 SESSION OF ONE-ON-ONE MENTORSHIP

HOW TO FIND A TRADING STRATEGY

START TRADING WHAT YOU ARE GOOD AT

— Michael Baehr —

mike@bearbulltraders.com



20 Category 1 or 2 Trades (Trade Plan)

- Take a Trade
- Screenshot Entry
- Manage the Trade according to your Trade Plan
- Take End of Day Screenshot
- Mark Highest Price went before hitting your stop
- Determine Category of Trade
- Repeat till you have 20 Category 1 or 2 Trades

