

Trading Plan (BHOD with Scanner)

Enter a position when there is a buyer who is willing to pay more for the stock than anyone else in the world during the intraday session if it has rising volume into the break.

Time: 9:33am – 10:30am ET

Stock Selection:

- Stock Hits the Scanner (See Image for Scanner Settings)

Setup Identification Indicators:

- **Indicators (3 of 5):**
 - The stock has smooth volume (Consistent Candles)
 - The HOD is near a significant level (PMH, PML, TFL, ATH, PCL, R/S(x) or Daily)
 - The stock is pulling back from the HOD (minimum of 2 red candles)
 - Level 2 is stacking above the HOD at .50 intervals
 - RVOL is greater than 90%
- **Confirmations (3 of 3):**
 - Begins to “punch” towards the HOD (has an indecision or engulfing candle after the pullback)
 - Does not consolidate at the HOD (No more than 1 red candle after the punch going into the break)
 - Has rising volume into the break of the HOD (Step up white Volume)

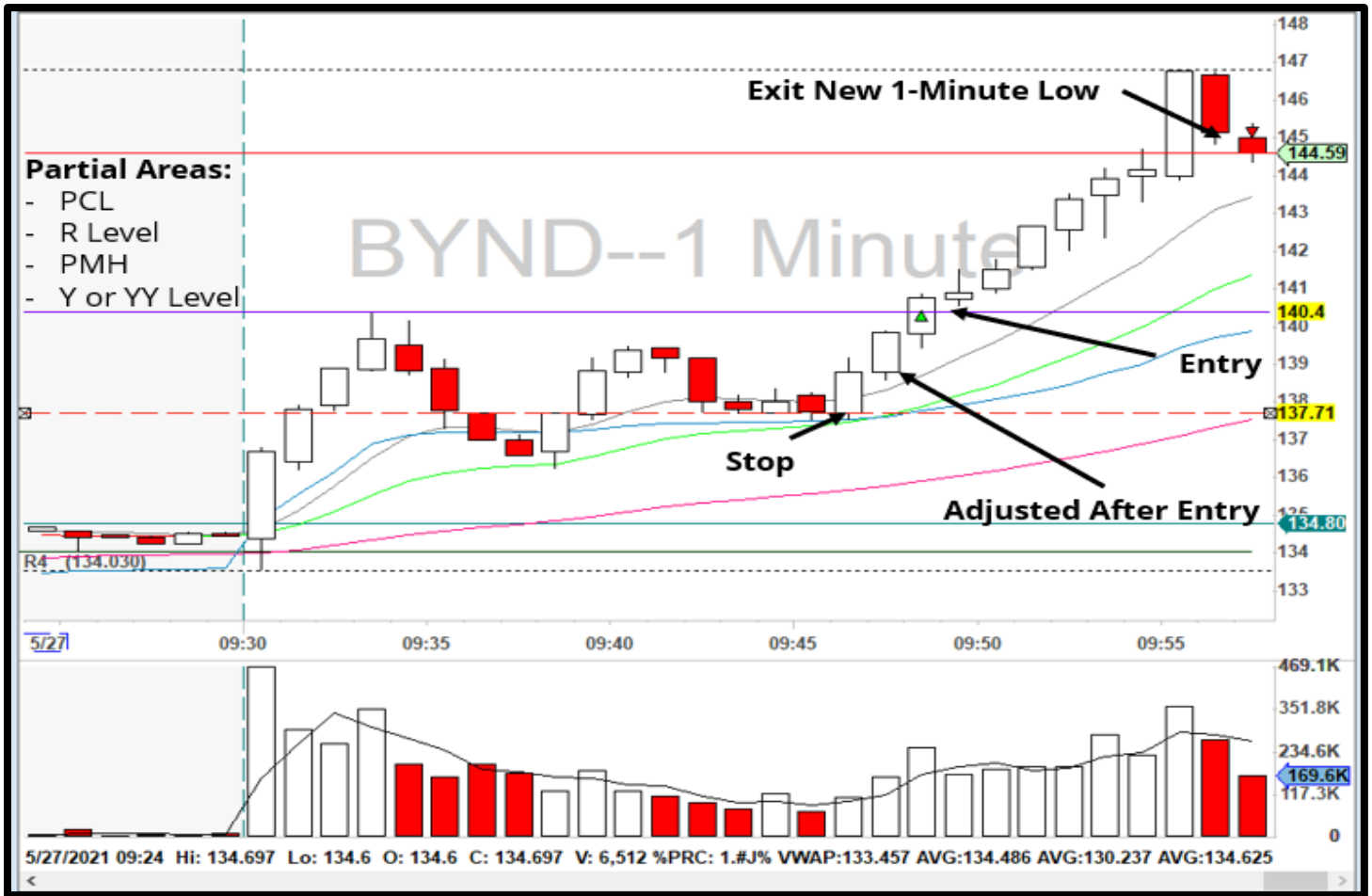
Trade Execution:

- **Entry Signal:**
 - Break of a Significant Level
- **Stop Loss:**
 - Open of 2 previous Candles for Size
 - Move to New 1-Minute Low
- **Target:**
 - Primary Partial: Significant Levels (PMH, PML, TFL, ATH, PCL, R/S(x) or Daily)
 - Secondary Partial: Profit Target 1R Move from Original Stop
 - All out: B/E after 1st Partial or New 1-Minute Low

Consideration Notes:

- This is a Scalping Strategy
- It Should Work Right Away
- Do Not Hold
- Move Stop to B/E After 1st Partial
- Can't Get Mad if Stopped Out and Stock Runs Higher
- Volume (30 Seconds)

Trade Example



Scanner Settings

Alert Config Window

Strategies Search Select Alerts Window Specific Filters Exchanges Symbol Lists Columns Summary

Window Name: Break of HOD

Current Strategy Description:

Alerts:

- 📉 25% 25% pullback from highs (Open)

Filters:

- 💰 Stocks where the price is between \$90 and \$1,000.
- 📊 Stocks where the current volume is at least 1.25.
- 📅 Stocks where the volume today is at least 300,000 shares.
- 📈 Stocks where the volume in the last minute is at least 90% of normal.
- 📉 Stocks where the price is at least \$0.25 below today's high.
- 📊 Float Stocks where the value is at least 50,000,000.

OK Cancel Flip