

# Strategy:

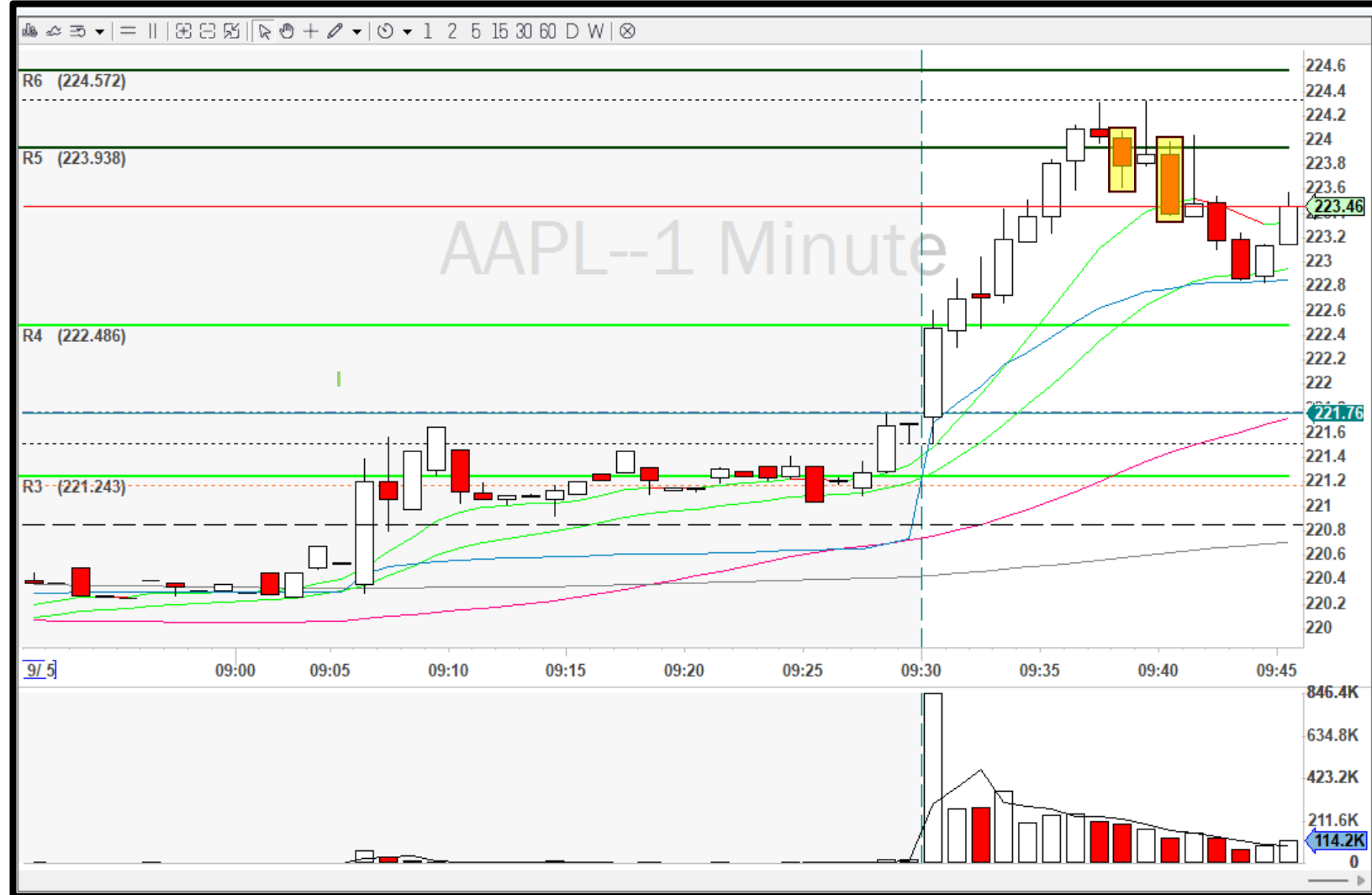
## BHOD with Scanners

# Stock Selection

- Stock Hits the Scanner

History: Break of HOD

Time	Type	Symbol	Rel Vol	Flt (Shr)	Vol 1 Min	Vol Today	Vol Today	Chg Close
3:38	0 25%	ORCL	2.06	1.60B	294.9	136.1	6.64M	1.5
10:48	0 25%	AMZN	1.31	9.35B	155.0	45.7	14.45M	3.1
10:46	0 25%	ORCL	1.63	1.60B	226.0	33.3	1.62M	1.4
10:45	0 25%	TSLA	1.74	2.78B	215.5	67.1	47.03M	5.8
10:29	0 25%	ORCL	1.43	1.60B	145.7	24.5	1.19M	1.1
10:13	0 25%	AMZN	1.34	9.35B	218.5	30.9	9.76M	2.7
10:10	0 25%	NVDA	1.42	23.6B	139.8	23.6	86.70M	2.1
10:04	0 25%	ROKU	2.68	126M	243.5	30.8	1.20M	7.0
9:46	0 25%	COIN	1.80	191M	167.0	13.6	898.5K	1.2
9:43	0 25%	COIN	1.94	191M	287.3	12.3	813.2K	0.8
9:43	0 25%	AMZN	2.07	9.35B	161.4	16.6	5.25M	2.4
9:41	0 25%	GOOGL	1.56	5.84B	207.5	10.2	2.06M	1.4
9:41	0 25%	TSLA	4.12	2.78B	398.7	22.0	15.41M	3.8
9:40	0 25%	NVDA	2.90	23.6B	291.8	12.0	43.98M	1.6
9:40	0 25%	META	1.51	2.18B	182.8	9.8	1.01M	1.1
9:40	0 25%	AAPL	2.17	15.5B	172.9	10.9	4.57M	1.3
9:40	0 25%	COIN	2.26	191M	232.8	10.3	680.0K	0.7
9:39	0 25%	MSFT	1.83	7.42B	159.5	8.2	1.42M	0.7
9:38	0 25%	AAPL	2.45	15.5B	273.2	9.9	4.17M	1.3
9:36	0 25%	TSM	1.32	24.2B	171.4	5.8	680.4K	1.0
9:35	0 25%	COIN	2.84	191M	231.0	7.6	501.0K	0.2
9:34	0 25%	NVDA	4.01	23.6B	264.3	7.6	28.01M	0.3



# Setup Identification

- Time: 0933 – 1030

- Indicators

- Pullback
- Smooth Volume
- Significant Level
- Level 2 Stacking on Ask Side
- RVOL 90%



# Setup Identification

- Time: 0933 – 1030

- Indicators

- Pullback
- Smooth Volume
- Significant Level
- Level 2 Stacking on Ask Side
- RVOL 90%

- Confirmations

- No Consolidation
- Begins to Punch
- Rising Volume



# Trade Execution

- Entry Signal
  - Break of a Significant Level
- Stop Loss:
  - Open of 2 Previous Candles For Size
  - Move to New 1-Minute Low



# Trade Execution

- **Entry Signal**

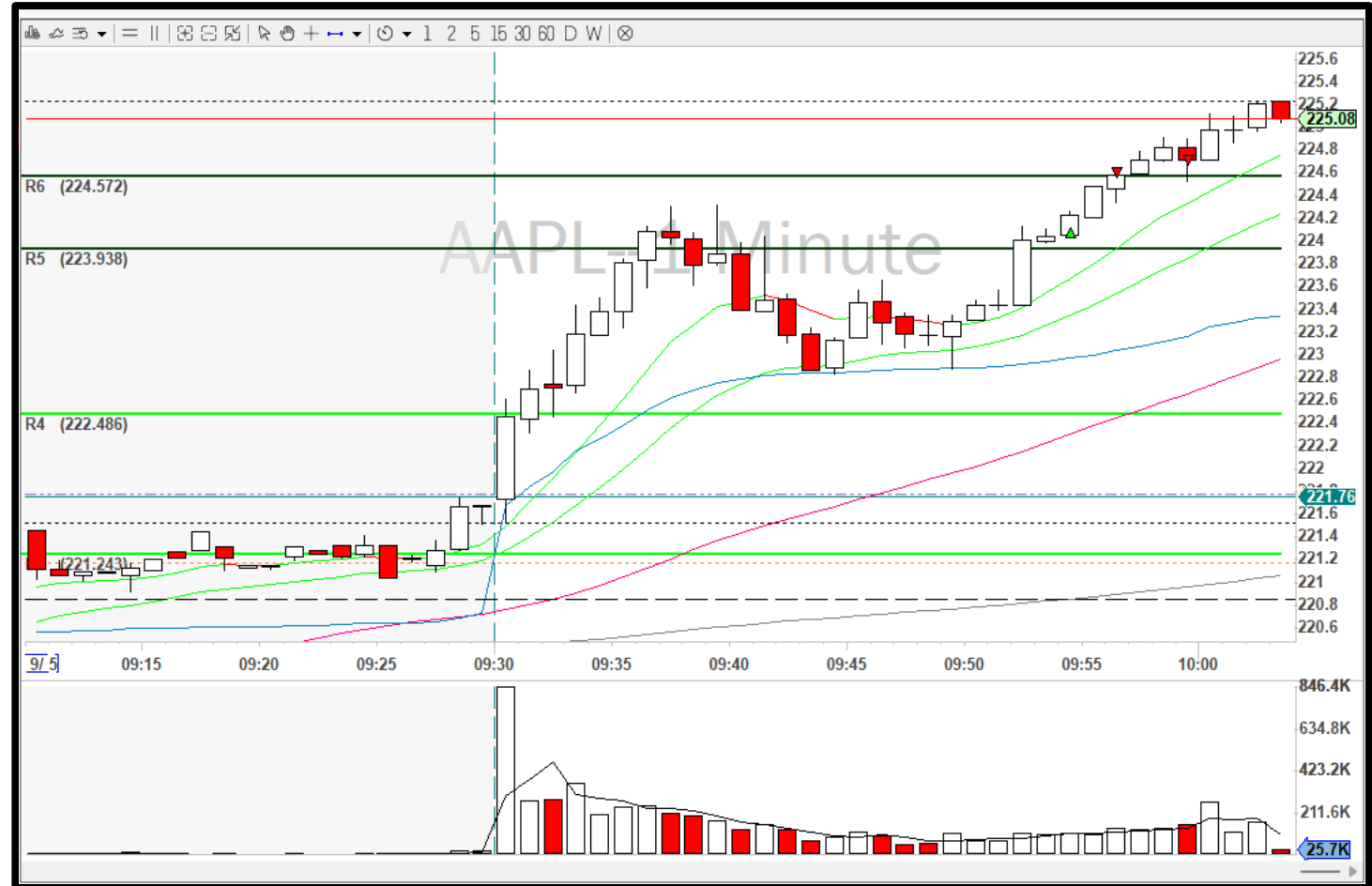
- **Break of a Significant Level**

- **Stop Loss:**

- **Open of Previous Candle**
- **Move to New 1-Minute Low**

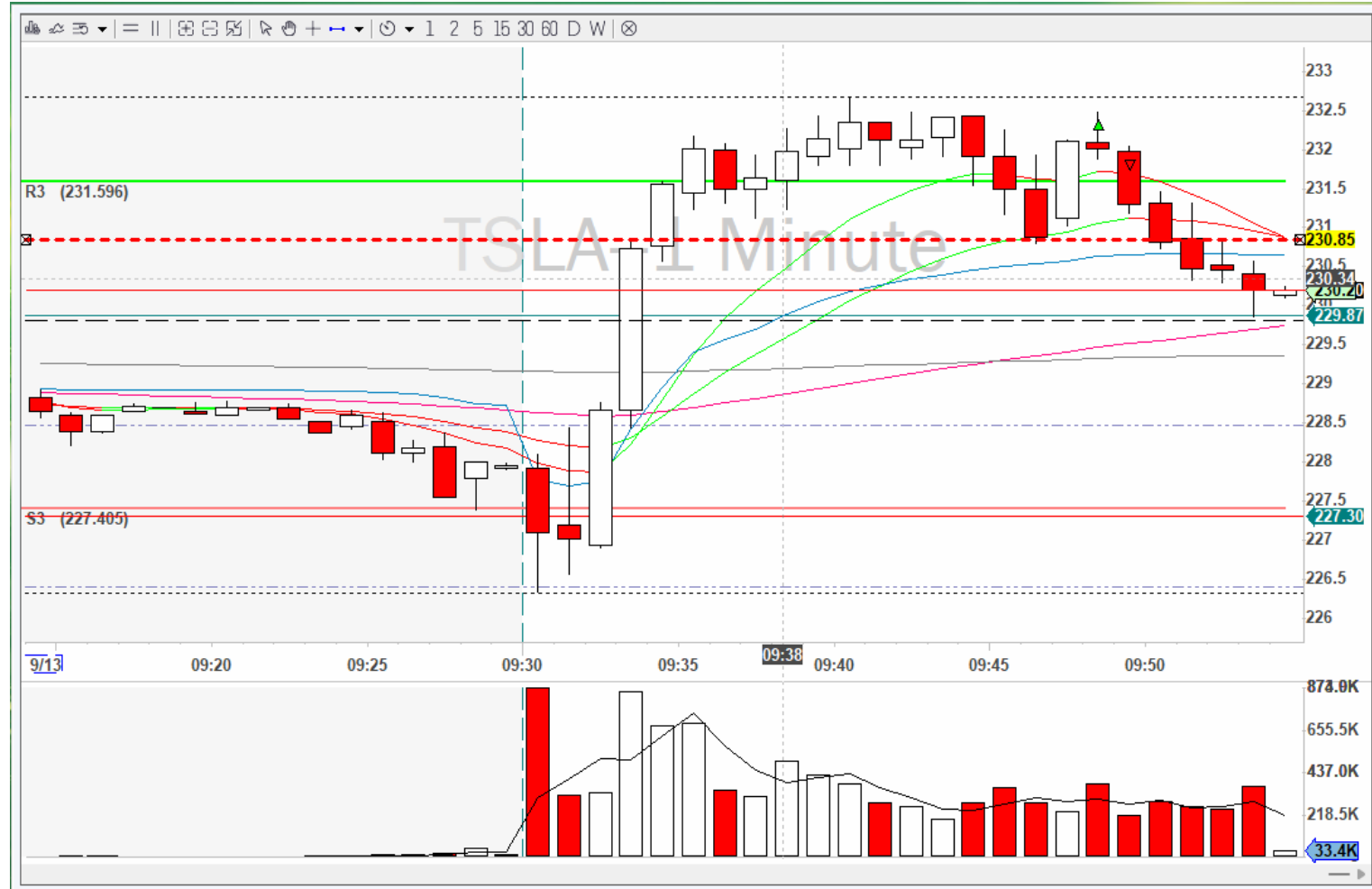
- **Targets:**

- **Profit Target 1R Move from Original Stop**
- **Partial at Significant Levels**
- **All Out: B/E or New 1-Minute Low**



# Consideration Notes/Examples

- This is a Scalping Strategy
- It Should Work Right Away
- Do Not Hold
- Move Stop to B/E after 1<sup>st</sup> Partial
- Can't Get Mad
- Volume (30 Seconds)



# DISCLAIMER

Tradingterminal.com employees, contractors, shareholders and affiliates, are **NOT an investment advisory service, a registered investment advisor or a broker-dealer** and does not undertake to advise clients on which securities they should buy or sell for themselves.

You understand that **NO content published as part of the Trading Terminal and its Website constitutes a recommendation** that any particular investment, security, portfolio of securities, transaction or investment strategy is suitable for any specific person.

You further understand that **none of the creators or providers of our Services or their affiliates will advise you personally** concerning the nature, potential, value or suitability of any particular investment, security, portfolio of securities, transaction, investment strategy or other matter.