

How does the price of the stock
move DOWN (lower) in the stock
market



Market Sell orders move price Down.

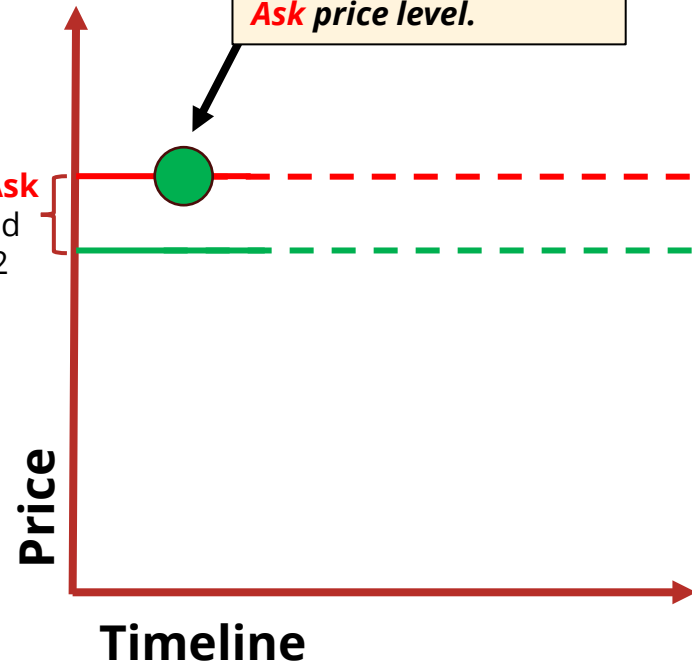


Current price is trading at \$132.47, the Best Ask price level.

COB

Price	Size	
132.47	83	Current price
132.35	47	

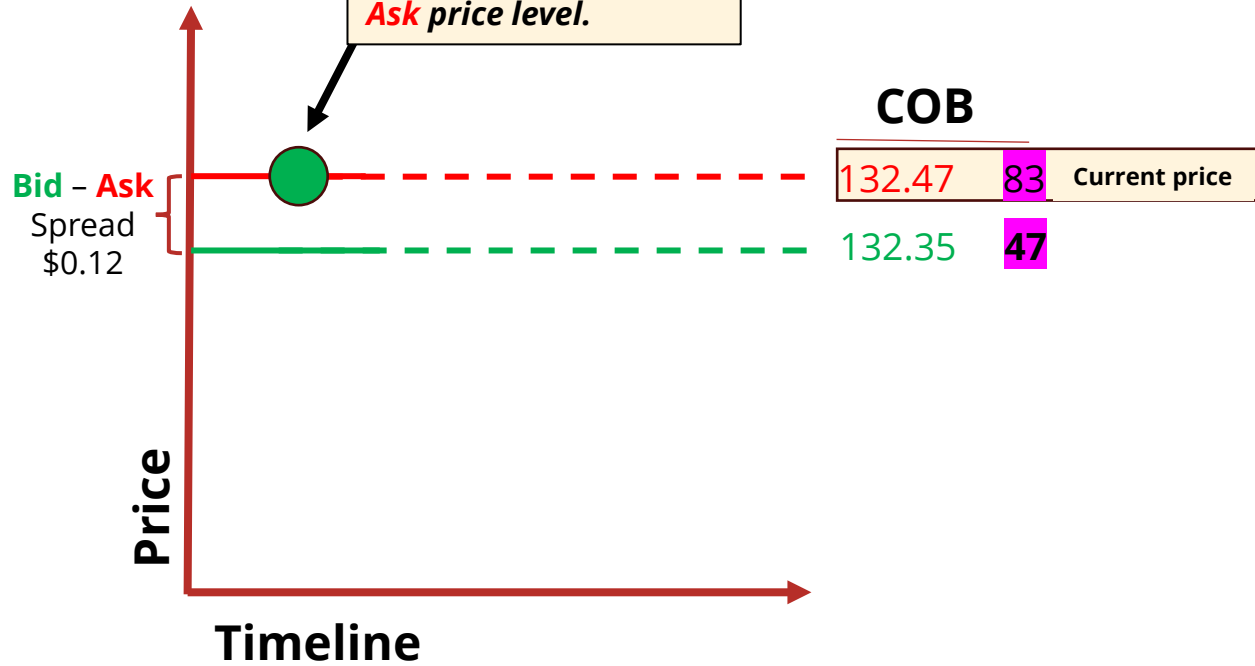
Bid - Ask Spread \$0.12



Market Sell orders move price Down. ↓



Current price is trading at \$132.47, the Best Ask price level.

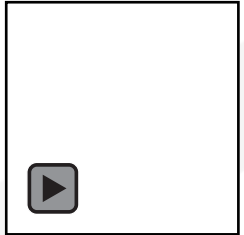


Sell Market Order.

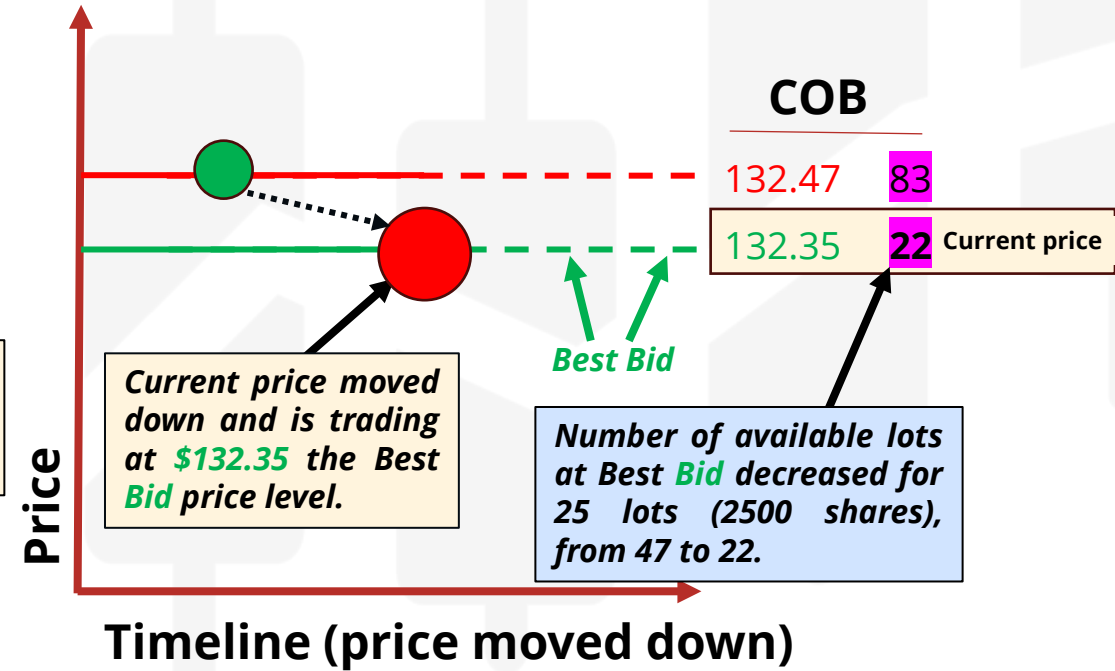
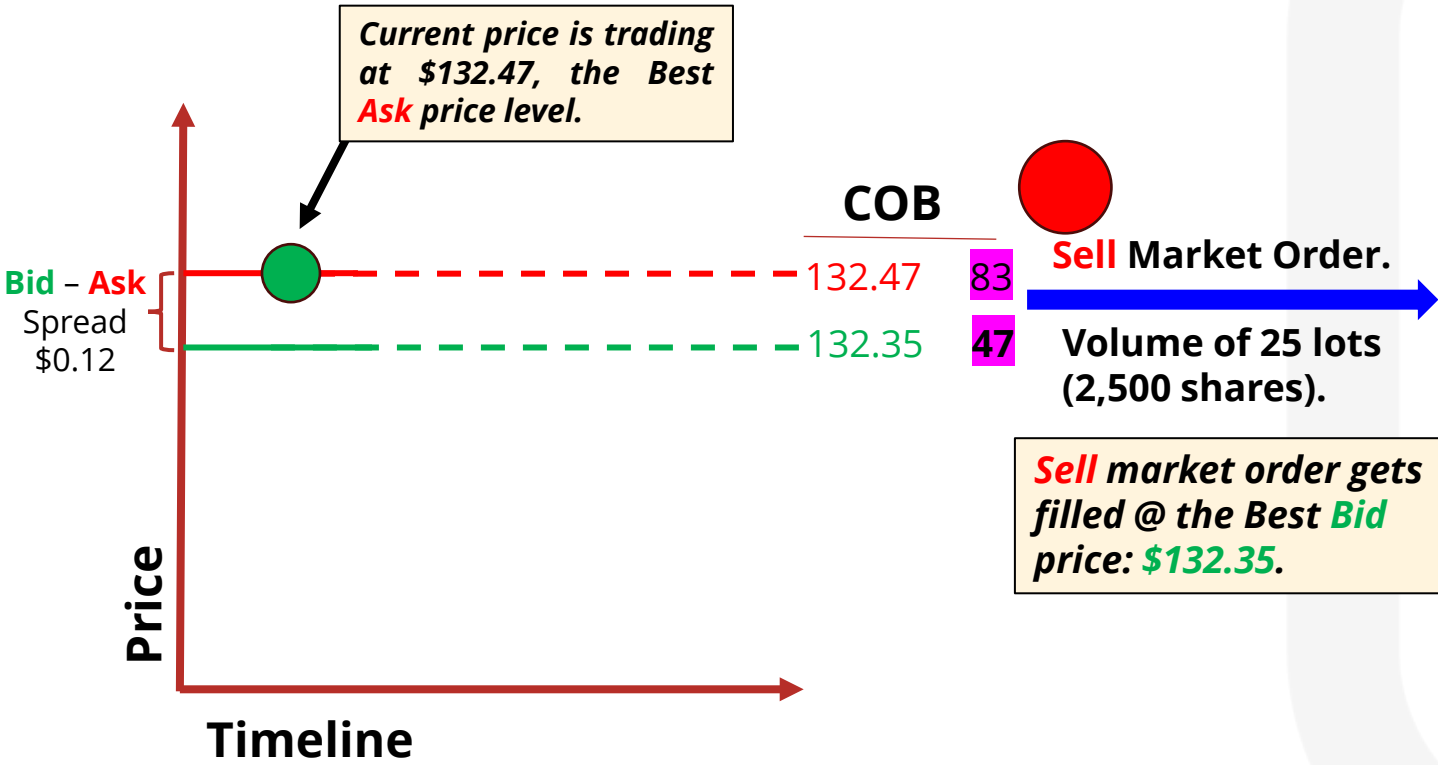


Volume of 25 lots (2,500 shares).

Sell market order gets filled @ the Best Bid price: \$132.35.

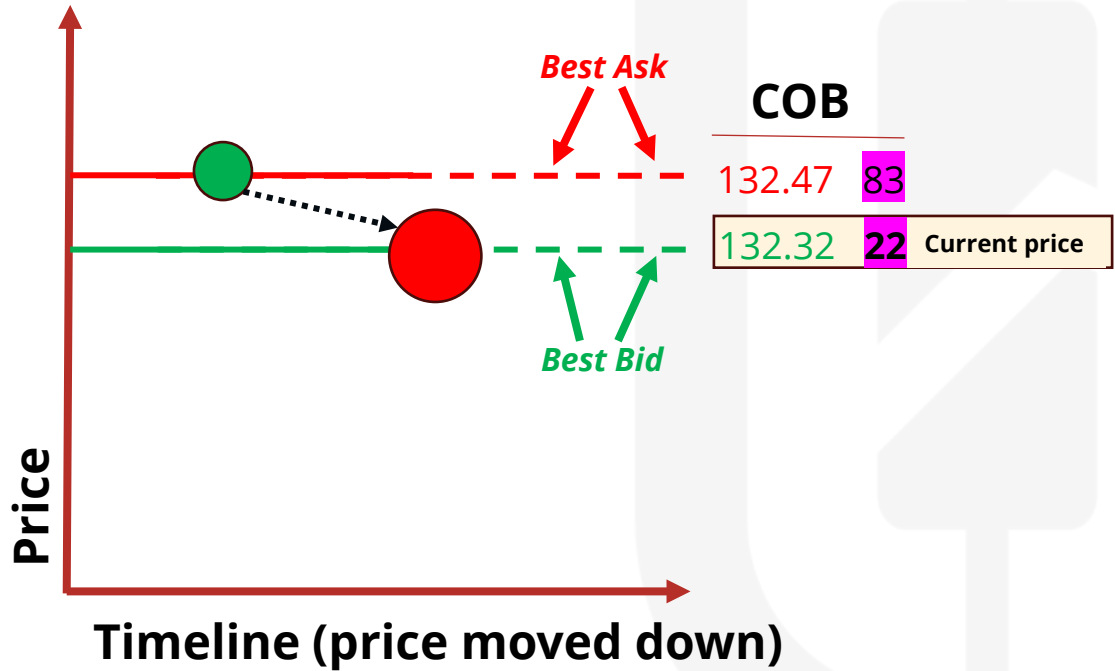


Market Sell orders move price Down.

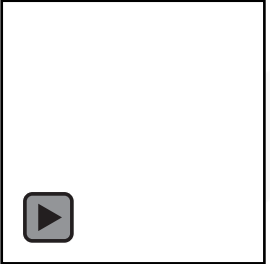


Market Sell orders get filled at the best Bid and move price Down.

Market Sell Orders (aggressive Sellers; Supply) will be filled at the best **Bid** price that is lower than the current price and will move price DOWN.



Current price moved down due to the **Sell** market order and is currently trading at new current price **\$132.32** - the **Best Bid** price level.



Summary

- Aggressive **Market Sell Orders** will be filled on the next available best **Bid**, which is priced below the current market price.
- Aggressive **Market Sell Orders** will move price lower.
- When **Sellers (Supply)** are relatively stronger compared to **Buyers (Demand)**, price will move lower.

