



## Trading Terminal Scanners

This document contains the parameters and filters for each of [www.TradingTerminal.com](http://www.TradingTerminal.com) Scanners. It is for information purposes only. The contents up this document may not be updated at regular intervals to reflect the live scanners used in the chat room.


1. [TT] Gappers UP (Pre-Market Movers)
2. [TT] Gappers Down (Pre-Market Movers)
3. [TT] Halt/ Resume Circuit Breaker
4. [TT] Turbo BreakUp
5. [TT] VWAP Breaking Out
6. [TT] 5/15/30 ORBs on Volume
7. [TT] Volume Breakouts
  - A. Breaking Down with Volume
  - B. Breaking Out with Volume
  - C. Breaking Down with Volume Duplicate
8. [TT] High Volume Trending Stocks
9. [TT] Extreme Reversals
10. [TT] Turbo BreakDown
11. [TT] BHOD/BLOD

[TT] Gappers UP (Pre <span>▼</span> )   +         10-17 07:59 <span style="float: right;">   <span style="background-color: #007bff; color: white; padding: 2px 5px;">▼</span> X</span>						
Time	Symbol	Change fro...	Daily volume	Price (\$)	daily ATR(1...	Float
19:59:50	FGI	36.36 %	4.25 M	6.60	0.51 \$	0.52M
19:49:15	VHC	28.94 %	2.25 M	21.92	1.05 \$	3.65M
19:56:26	LBRT	28.73 %	26.94 M	15.39	0.57 \$	156.33M
19:59:19	DCTH	22.54 %	879,355	15.17	0.60 \$	34.03M
19:47:21	AGH	21.48 %	656,071	6.10	0.50 \$	4.46M
19:57:30	SUGP	21.44 %	121,181	9.80	1.33 \$	4.02M
19:45:56	IRON	21.11 %	2.18 M	90.00	2.87 \$	22.95M
19:59:15	STI	18.98 %	2.33 M	21.69	4.42 \$	1.47M
19:56:39	SPAI	18.16 %	1.62 M	8.85	0.76 \$	6.38M

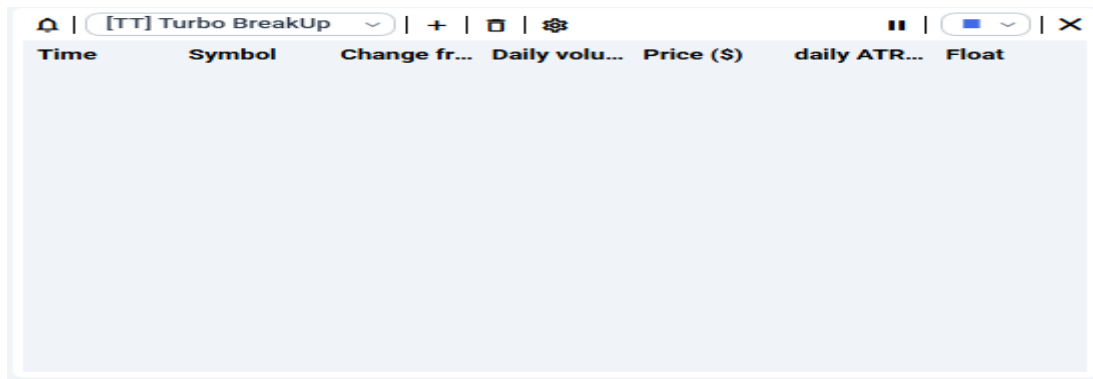
[TT] Gappers UP (Pre-Market Movers)	
Scanner Settings	
Top List	Filters
<ul style="list-style-type: none"> <li>- Symbols are sorted by [ Change from close (%) ] starting with the highest value</li> <li>- Only symbols with a minimum volume of 1,000 are shown because of the volume threshold of the filter: [ Change from close ]</li> </ul>	<ul style="list-style-type: none"> <li>- The value of [ Daily volume ] is over 100,000 - (min. volume: 0 - calculated during: Pre-Market, Market, Post-Market)</li> <li>- The value of [ Price (\$) ] is over 5 - (min. volume: 0 - calculated during: Pre-Market, Market, Post-Market)</li> <li>- The value of [ daily ATR(14) ] is over 0.5 - (min. volume: 0 - calculated during: Pre-Market, Market, Post-Market)</li> <li>-The value of [ Float ] is over 1 - (min. volume: 0 - calculated during: Pre-Market, Market, Post-Market)</li> <li>-The value of [ Change from close (%) ] is over 2 - (min. volume: 1,000 - calculated during: Pre-Market, Market, Post-Market)</li> </ul>

[TT] Gappers DOWN ( v ) +   10-17 07:59						
Time	Symbol	Change fro...	Daily volume	Price (\$)	daily ATR(1...	Float
17:07:17	OWLS	-33.39 %	176,192	37.00	71.60 \$	29.69M
19:38:58	SNSE	-32.36 %	770,783	12.00	1.14 \$	0.83M
19:47:14	EVAX	-25.46 %	1.91 M	7.16	1.26 \$	5.10M
19:29:46	AEC	-19.61 %	443,673	7.75	1.46 \$	10.05M
19:58:28	HSDT	-18.53 %	1.58 M	8.22	2.38 \$	0.11M
19:30:02	SDOT	-18.30 %	358,004	5.85	1.05 \$	0.76M
19:58:54	OMER	-17.38 %	7.19 M	8.12	0.88 \$	65.48M
19:59:49	NUKK	-16.19 %	3.56 M	11.04	1.61 \$	4.51M
16:30:59	PTCT	-15.52 %	893,619	56.50	2.33 \$	65.01M
16:05:34	FMFC	-15.22 %	256,356	8.30	2.09 \$	8.74M
17:29:57	RSI	-14.47 %	3.36 M	17.35	1.00 \$	91.75M
19:59:56	HIMS	-14.34 %	74.07 M	50.65	4.40 \$	202.68M

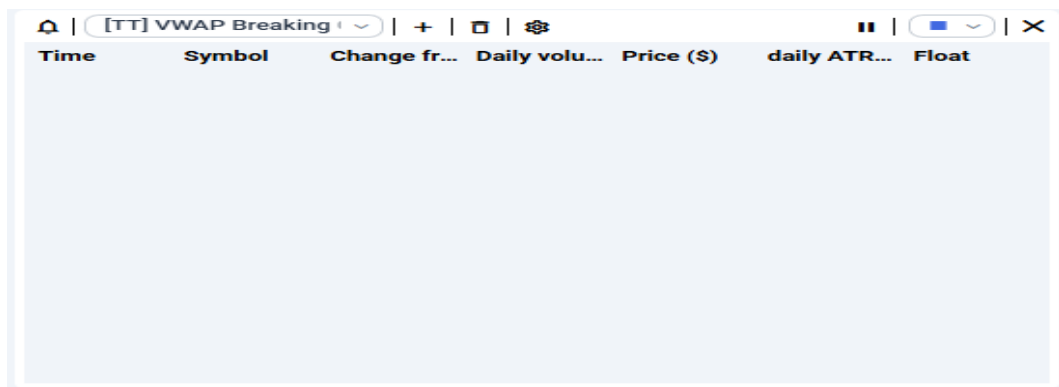
[TT] Gappers Down (Pre-Market Movers)	
Scanner Settings	
Top List	Filters
<ul style="list-style-type: none"> <li>- Symbols are sorted by [ Change from close (%) ] starting with the lowest value</li> <li>- Only symbols with a minimum volume of 1,000 are shown because of the volume threshold of the filter: [ Change from close ]</li> </ul>	<ul style="list-style-type: none"> <li>- The value of [ Daily volume ] is over 100,000 - (min. volume: 0 - calculated during: Pre-Market, Market, Post-Market)</li> <li>- The value of [ Price (\$) ] is over 5 - (min. volume: 0 - calculated during: Pre-Market, Market, Post-Market)</li> <li>- The value of [ daily ATR(14) ] is over 0.5 - (min. volume: 0 - calculated during: Pre-Market, Market, Post-Market)</li> <li>- The value of [ Float ] is over 1 - (min. volume: 0 - calculated during: Pre-Market, Market, Post-Market)</li> <li>- The value of [ Change from close (%) ] is under -2 - (min. volume: 1,000 - calculated during: Pre-Market, Market, Post-Market)Market, Market, Post-Market)</li> <li>- The value of [ daily ATR(14) ] is over 0.5 - (min. volume: 0 - calculated during: Pre-Market, Market, Post-Market)</li> <li>- The value of [ Float ] is over 1 - (min. volume: 0 - calculated during: Pre-Market, Market, Post-Market)</li> <li>- The value of [ Change from close (%) ] is over 2 - (min. volume: 1,000 - calculated during: Pre-Market, Market, Post-Market)</li> </ul>

<div>  <div>[TT] Halt / Resume Ci <span>▼</span></div> <div> <span>+</span> <span>🗑️</span> <span>⚙️</span> </div> <div> <span>⏸</span> <div> <span>■</span> <span>▼</span> </div> <span>✕</span> </div> </div>						
Time	Symbol	Change fro...	Daily volume	Price (\$)	daily ATR(1...	Float
19:50:00	ETHZ	3.01 %	4.80 M	1.7100	0.19 \$	89.88M
19:50:00	VBTX	1.74 %	13.15 M	30.47	0.95 \$	52.44M
19:50:00	ZIMV	0.05 %	313,878	19.00	0.03 \$	27.18M

[TT] Halt/ Resume Circuit Breaker	
Scanner Settings	
Alerts	Filters
- [ Halt ] - (min. volume: 0 - calculated during: Pre-Market, Market, Post-Market)	- The value of [ Price (\$) ] is over 1 - (min. volume: 0 - calculated during: Pre-Market, Market, Post-Market)



[TT] Turbo BreakUp	
Scanner Settings	
Alerts	Filters
- [ High of the day ] - (min. volume: 50,000 calculated during: Market)	- The value of [ Float ] is over 50,000,000 - (min. volume: 0 - calculated during: Pre-Market, Market, Post-Market) - The value of [ Price (\$) ] is between 10 and 350 - (min. volume: 0 - calculated during: Pre-Market, Market, Post-Market) - The value of [ Daily volume ] is over 500,000 - (min. volume: 0 - calculated during: Pre-Market, Market, Post-Market) - The value of [ 1 min volume (%) ] is over 300 - (min. volume: 1,000 - calculated during: Pre-Market, Market, Post-Market) - The value of [ Average volume 20 Day ] is over 300,000 - (min. volume: 0 - calculated during: Pre-Market, Market, Post-Market)



[TT] VWAP Breaking Out	
Scanner Settings	
Alerts	Filters
<ul style="list-style-type: none"> <li>- [ Crossing above VWAP ] - (min. volume: 500,000 - calculated during: Pre-Market, Market, Post-Market)</li> <li>- [ Crossing below VWAP ] - (min. volume: 500,000 - calculated during: Pre-Market, Market, Post-Market)</li> </ul>	<ul style="list-style-type: none"> <li>- The value of [ Daily volume ] is over 500,000 - (min. volume: 0 - calculated during: Pre-Market, Market, Post-Market)</li> <li>- The value of [ Price (\$) ] is between 5 and 250 - (min. volume: 0 - calculated during: Pre-Market, Market, Post-Market)</li> <li>- The value of [ 1 min volume (%) ] is over 300 - (min. volume: 1,000 - calculated during: Pre-Market, Market, Post-Market)</li> <li>- The value of [ 5 min volume (%) ] is over 500 - (min. volume: 1,000 - calculated during: Pre-Market, Market, Post-Market)</li> <li>- The value of [ Relative volume (%) at same time ] is over 250 - (min. volume: 50,000 - calculated during: Pre-Market, Market, Post-Market)</li> <li>- The value of [ Change from close (%) ] is under -2 or over 2 - (min. volume: 1,000 - calculated during: Pre-Market, Market, Post-Market)</li> <li>- The value of [ Float ] is over 1 - (min. volume: 0 - calculated during: Pre-Market, Market, Post-Market)</li> <li>- The value of [ Minutes in market ] is over 1 - (min. volume: 0 - calculated during: Pre-Market, Market, Post-Market)</li> </ul>



[TT] 5/15/30 ORBs on Volume	
Scanner Settings	
Alerts	Filters
<ul style="list-style-type: none"> <li>- [ 30 Min opening range breakdown ] - (min. volume: 100,000 - calculated during: Market)</li> <li>- [ 5 Min opening range breakdown ] - (min. volume: 100,000 - calculated during: Market)</li> <li>- [ 15 Min opening range breakdown ] - (min. volume: 100,000 - calculated during: Market)</li> <li>- [ 30 Min opening range breakout ] - (min. volume: 100,000 - calculated during: Market)</li> <li>- [ 5 Min opening range breakout ] - (min. volume: 100,000 - calculated during: Market)</li> <li>- [ 15 Min opening range breakout ] - (min. volume: 100,000 - calculated during: Market)</li> </ul>	<ul style="list-style-type: none"> <li>- The value of [ Price (\$) ] is between 5 and 500 - (min. volume: 0 - calculated during: Pre-Market, Market, Post-Market)</li> <li>- The value of [ Relative volume (%) ] at same time ] is over 250 - (min. volume: 50,000 - calculated during: Pre-Market, Market, Post-Market)</li> <li>- The value of [ Daily volume ] is over 300,000 - (min. volume: 0 - calculated during: Pre-Market, Market, Post-Market)</li> <li>- The value of [ 1 min volume (%) ] is over 200 - (min. volume: 1,000 - calculated during: Pre-Market, Market, Post-Market)</li> <li>- The value of [ Minutes in market ] is between 1 and 60 - (min. volume: 0 - calculated during: Pre-Market, Market, Post-Market)</li> <li>- The value of [ Float ] is over 100,000,000 - (min. volume: 0 - calculated during: Pre-Market, Market, Post-Market)</li> </ul>

<div> <span>🔔</span> <span>[TT] Volume Breakou</span> <span>+</span> <span>🗑️</span> <span>⚙️</span> <span>⏸</span> <span>📏</span> <span>✕</span> </div>						
Time	Sym...	Change fro...	Daily...	Price (\$)	daily A...	Float
19:59:25	HIMS	-14.26 %	74.0...	50.70	4.40 \$	202.68M
19:59:25	HIMS	-14.26 %	74.0...	50.70	4.40 \$	202.68M
19:57:53	NEM	-7.07 %	17.5...	91.30	3.17 \$	1.10B
19:57:53	NEM	-7.07 %	17.5...	91.30	3.17 \$	1.10B
19:56:23	DRD	-9.60 %	1.23 ...	28.67	1.62 \$	42.81M
19:56:23	DRD	-9.60 %	1.23 ...	28.67	1.62 \$	42.81M
19:55:06	ORCL	-6.77 %	37.6...	291.85	12.94 \$	1.68B
19:55:06	ORCL	-6.77 %	37.6...	291.85	12.94 \$	1.68B
19:54:14	KVUE	8.76 %	51.7...	15.33	0.61 \$	1.92B
19:52:04	HPE	2.06 %	65.4...	22.99	1.17 \$	1.31B
19:51:42	LBRT	28.73 %	26.9...	15.39	0.57 \$	156.33M

- This Scanner consists of more than just one strategy, you will need to enable advanced alert config option

☒ Use advanced alert config

*(Define multiple alert strategy configurations with separate filters to be shown in one alert config)*

### The scanner consists of:

1. Breaking Down with Volume
2. Breaking Out with Volume
3. Breaking Down with Volume Duplicate

1) Breaking Down with Voume	
Scanner Settings	
Alerts	Filters
- [ 5 Min low ] - with setting: since 1.0 candles - (min. volume: 10,000 - calculated during: Pre-Market, Market, Post-Market)	- The value of [ Price (\$) ] is between 15 and 500 - (min. volume: 0 - calculated during: Pre-Market, Market, Post-Market)  - The value of [ Relative volume (%) at same time ] is over 150 - (min. volume: 50,000 - calculated during: Pre-Market, Market, Post-Market)  - The value of [ Daily volume ] is over 1,000,000 - (min. volume: 0 - calculated during: Pre-Market, Market, Post-Market)



	<ul style="list-style-type: none"> <li>- The value of [ daily ATR(14) ] is over 0.5 - (min. volume: 0 - calculated during: Pre-Market, Market, Post-Market)</li> <li>- The value of [ Change from open (%) ] is under -1 - (min. volume: 10,000 - calculated during: Market, Post-Market)</li> <li>- The value of [ Position in today range (%) ] is under 40 - (min. volume: 100,000 - calculated during: Pre-Market, Market, Post-Market)</li> <li>- The value of [ Float ] is over 30,000,000 - (min. volume: 0 - calculated during: Pre-Market, Market, Post-Market)</li> </ul>
<b>2) Breaking Out with Volume</b>	
<b>Scanner Settings</b>	
<b>Alerts</b>	<b>Filters</b>
- [ 5 Min high ] - with setting: since 1.0 candles - (min. volume: 10,000 - calculated during: Pre-Market, Market, Post-Market)	<ul style="list-style-type: none"> <li>- The value of [ Price (\$) ] is between 15 and 500 - (min. volume: 0 - calculated during: Pre-Market, Market, Post-Market)</li> <li>- The value of [ Relative volume (%) at same time ] is over 150 - (min. volume: 50,000 - calculated during: Pre-Market, Market, Post-Market)</li> <li>- The value of [ Daily volume ] is over 1,000,000 - (min. volume: 0 - calculated during: Pre-Market, Market, Post-Market)</li> <li>- The value of [ daily ATR(14) ] is over 0.5 - (min. volume: 0 - calculated during: Pre-Market, Market, Post-Market)</li> <li>- The value of [ Change from open (%) ] is over 1 - (min. volume: 10,000 - calculated during: Market, Post-Market)</li> <li>- The value of [ Position in today range (%) ] is over 60 - (min. volume: 100,000 - calculated during: Pre-Market, Market, Post-Market)</li> <li>- The value of [ Float ] is over 30,000,000 - (min. volume: 0 - calculated during: Pre-Market, Market, Post-Market)</li> </ul>

3) Breaking Down with Volume Duplicate	
Scanner Settings	
Alerts	Filters
<p>- [ 5 Min low ] - with setting: since 1.0 candles - (min. volume: 10,000 - calculated during: Pre-Market, Market, Post-Market)</p>	<p>- The value of [ Price (\$) ] is between 15 and 500 - (min. volume: 0 - calculated during: Pre-Market, Market, Post-Market)</p> <p>- The value of [ Relative volume (%) at same time ] is over 150 - (min. volume: 50,000 - calculated during: Pre-Market, Market, Post-Market)</p> <p>- The value of [ Daily volume ] is over 1,000,000 - (min. volume: 0 - calculated during: Pre-Market, Market, Post-Market)</p> <p>- The value of [ daily ATR(14) ] is over 0.5 - (min. volume: 0 - calculated during: Pre-Market, Market, Post-Market)</p> <p>- The value of [ Change from open (%) ] is under -1 - (min. volume: 10,000 - calculated during: Market, Post-Market)</p> <p>- The value of [ Position in today range (%) ] is under 40 - (min. volume: 100,000 - calculated during: Pre-Market, Market, Post-Market)</p> <p>- The value of [ Float ] is over 30,000,000 - (min. volume: 0 - calculated during: Pre-Market, Market, Post-Market)</p>

[TT] High Volume Tre						
+   10-17-07						
Time	Symbol	Chang...	Daily v...	Price ...	daily AT...	Float
19:59:56	HIMS	-14.34 %	74.07 M	50.65	4.40 \$	202.68M
19:56:26	LBRT	28.73 %	26.94 M	15.39	0.57 \$	156.33M
17:54:25	TFC	3.97 %	18.20 M	42.70	1.17 \$	1.29B
19:51:21	SHLS	-0.15 %	17.41 M	10.10	0.79 \$	143.98M
19:40:39	ZION	6.20 %	8.90 M	49.85	2.06 \$	144.52M
19:59:08	AXP	7.37 %	6.68 M	346.97	8.51 \$	695.12M
18:44:32	RGLD	-6.60 %	6.01 M	193.01	6.78 \$	65.29M
16:04:53	BN	1.02 %	4.94 M	44.46	3.09 \$	3.04B
16:04:31	EQR	1.16 %	4.69 M	62.21	0.91 \$	343.99M
19:44:58	SNDX	-5.05 %	4.37 M	14.30	0.82 \$	72.74M
16:01:02	LTH	3.21 %	3.90 M	25.71	0.69 \$	148.24M
15:59:53	GNTX	-0.69 %	3.80 M	26.01	0.52 \$	218.64M
19:19:57	IDYA	11.42 %	3.54 M	30.84	1.16 \$	81.82M
17:29:57	RSI	-14.47 %	3.36 M	17.35	1.00 \$	91.75M
16:30:32	OZK	-2.25 %	3.02 M	45.96	1.52 \$	104.99M
16:00:09	DOV	0.18 %	2.75 M	166.50	2.95 \$	136.42M
16:04:53	MTB	1.15 %	2.57 M	180.67	4.02 \$	155.64M

[TT] High Volume Trending Stocks	
Window Specific Filters	
Top List	Filters
<ul style="list-style-type: none"> <li>- Symbols are sorted by [ Daily volume ] starting with the highest value</li> <li>- Only symbols with a minimum volume of 100,000 are shown because of the volume threshold of the filter: [ Position in range (%) ]</li> </ul>	<ul style="list-style-type: none"> <li>- The value of [ Price (\$) ] is between 5 and 500 - (min. volume: 0 - calculated during: Pre-Market, Market, Post-Market)</li> <li>- The value of [ Daily volume ] is over 1,000,000 - (min. volume: 0 - calculated during: Pre-Market, Market, Post-Market)</li> <li>- The value of [ Relative volume (%) at same time ] is over 200 - (min. volume: 50,000 - calculated during: Pre-Market, Market, Post-Market)</li> <li>- The value of [ Average volume 20 Day ] is over 500,000 - (min. volume: 0 - calculated during: Pre-Market, Market, Post-Market)</li> </ul>

	<p>- The value of [ daily ATR(14) ] is over 0.5 - (min. volume: 0 - calculated during: Pre-Market, Market, Post-Market)</p> <p>- The value of [ Change from open (%) ] is under -0.5 or over 0.5 - (min. volume: 10,000 - calculated during: Market, Post-Market)</p> <p>- The value of [ Position in today range (%) ] is under 20 or over 80 - (min. volume: 100,000 - calculated during: Pre-Market, Market, Post-Market)</p> <p>- The value of [ Float ] is over 50,000,000 - (min. volume: 0 - calculated during: Pre-Market, Market, Post-Market)</p>
--	---

[TT] Extreme Reversa						
Time	Symbol	Change...	Daily v...	Price (\$)	daily A...	Float
19:56:04	RGTI	-0.95 %	109.35...	47.50	5.97 \$	318.41M
18:54:04	ASPI	-4.91 %	14.08 M	10.50	1.39 \$	65.98M
18:51:41	IREN	0.03 %	38.17 M	61.85	6.82 \$	241.46M

[TT] Extreme Reversals	
Scanner Settings	
Alerts	Filters
<ul style="list-style-type: none"> <li>- [ High of the day ] - (min. volume: 50,000 - calculated during: Market)</li> <li>- [ Low of the day ] - (min. volume: 50,000 - calculated during: Market)</li> <li>- [ 5 Min high ] - with setting: since 1.0 candles - (min. volume: 10,000 - calculated during: Pre-Market, Market, Post-Market)</li> </ul>	<ul style="list-style-type: none"> <li>- The value of [ Price (\$) ] is over 10 - (min. volume: 0 - calculated during: Pre-Market, Market, Post-Market)</li> <li>- The value of [ Consecutive 1 min candles ] is under -2 or over 2 - (min. volume: 100,000 - calculated during: Pre-Market, Market, Post-Market)</li> <li>- The value of [ Consecutive 5 min candles ] is under -2 or over 2 - (min. volume: 100,000 - calculated during: Pre-Market, Market, Post-Market)</li> <li>- The value of [ Distance from VWAP (%) ] is under -1 or over 1 - (min. volume: 100,000 - calculated during: Pre-Market, Market, Post-Market)</li> <li>- The value of [ Premarket Volume ] is over 5,000 - (min. volume: 0 - calculated during: Pre-Market, Market, Post-Market)</li> <li>- The value of [ RSI(14) 5 min ] is under 20 or over 80 - (min. volume: 100,000 - calculated during: Pre-Market, Market, Post-Market)</li> </ul>

[TT] Turbo BreakDow						
Time	Symbol	Change from cl...	Daily volume	Price (\$)	daily ATR(14)	Float

[TT] Turbo BreakDown	
Scanner Settings	
Alerts	Filters
<ul style="list-style-type: none"> <li>- [ Low of the day ] - (min. volume: 50,000 - calculated during: Market) [ Low of the day ] - (min. volume: 50,000 - calculated during: Market)</li> <li>- [ 5 Min high ] - with setting: since 1.0 candles - (min. volume: 10,000 - calculated during: Pre-Market, Market, Post-Market)</li> </ul>	<ul style="list-style-type: none"> <li>- The value of [ Float ] is over 50,000,000 - (min. volume: 0 - calculated during: Pre-Market, Market, Post-Market)</li> <li>- The value of [ Price (\$) ] is between 10 and 350 - (min. volume: 0 - calculated during: Pre-Market, Market, Post-Market)</li> <li>- The value of [ Daily volume ] is over 500,000 - (min. volume: 0 - calculated during: Pre-Market, Market, Post-Market)</li> <li>- The value of [ 1 min volume (%) ] is over 500 - (min. volume: 1,000 - calculated during: Pre-Market, Market, Post-Market)</li> <li>- The value of [ Average volume 20 Day ] is over 300,000 - (min. volume: 0 - calculated during: Pre-Market, Market, Post-Market)</li> </ul>

