

Secrets To Consistent Day Trading

Using Market Atlas to Read Depth of Market and Price Action

604.1	463
604.0	2756
603.9	4977
603.8	928
603.7	337
603.6	5368
603.5	1511
603.4	724
603.3	5261
603.2	1316
603.1	1204
603.0	9707
602.9	902
602.8	214
602.7	4784
602.6	730
602.5	1105
602.4	1225
602.3	614
602.2	260
602.1	1550
602.0	2010
601.9	2155
601.8	954
601.7	1200
601.6	482
601.5	1111
601.4	1313
601.3	1104
601.2	5285
601.1	1941
601.0	3260
600.9	7559
600.8	964
600.7	1642
600.6	5364
600.5	899
600.4	643
600.3	1680
600.2	450
600.1	147
600.0	3669
599.9	1140
599.8	650
599.7	18
599.6	
599.5	66
599.4	302
599.3	10
599.2	4
599.1	2
599.0	372
598.9	47

Level 2 Data or Depth of Market

Level 1

Level 2

MMID	BID	SIZE	MMID	ASK	SIZE
ACB	192.42	0	ACB	192.45	0
BATS	192.41	10	ARCA	192.40	1
IEX	192.41	6	ACB	192.46	0
NYSE	192.41	3	NSDQ	192.46	0
NSDQ	192.41	1	EDGX	192.47	1
ACB	192.41	0	NASD	192.47	1
NSDQ	192.40	2	ACB	192.47	0
NASD	192.40	2	NSDQ	192.47	0
ACB	192.40	1	NSDQ	192.48	1
ARCA	192.40	1	ACB	192.48	1
NQBX	192.39	1	NSDQ	192.49	1
NSDQ	192.39	0	ACB	192.49	1
NSDQ	192.38	0	NSDQ	192.50	1
CHX	192.37	1	BATS		
NSDQ	192.37	0	MEMX	192.66	2
ACB	192.36	0	MIAX	192.67	2
ACB	192.34	0	PSX	192.78	2
PSX	192.33	3	NSX	192.78	2
EDGA	192.33	2	CHX	192.80	7
EDGX	192.30	10	NQBX	192.80	1
MIAX	192.00	10	NYSE	192.90	1
MEMX	192.00	1	IEX	193.00	4
NSX	191.50	10	EDGA	193.00	3
BYX	189.60	1	BYX	193.00	1
AMEX	189.00	2	AMEX	193.00	1

Numbers are lot
(100 share)

MMID:
Market maker ID

Market Atlas - A modern visualization of Depth of Market

02/11/26 09:30:57

NVDA 192.41 -- 192.47 NVIDIA C...

NVDA 192.88 - 191.67 PCL 188.54

Last 192.4307 3.891 (2.1%) Vol 7,628,253

Lv1 192.41 192.46 Vwap: 191.39 S

MMID	BID	SIZE	MMID	ASK	SIZE
ACB	192.42	0	ACB	192.45	0
BATS	192.41	10	ARCA	192.46	1
IEX	192.41	6	ACB	192.46	0
NYSE	192.41	3	NSDQ	192.46	0
NSDQ	192.41	1	EDGX	192.47	1
ACB	192.41	0	NASD	192.47	1
NSDQ	192.40	2	ACB	192.47	0
NASD	192.40	2	NSDQ	192.47	0
ACB	192.40	1	NSDQ	192.48	1
ARCA	192.40	1	ACB	192.48	1
NQBX	192.39	1	NSDQ	192.49	1
NSDQ	192.39	0	ACB	192.49	1
NSDQ	192.38	0	NSDQ	192.50	1
CHX	192.37	1	BATS		
NSDQ	192.37	0	MEMX	192.66	2
ACB	192.36	0	MIAX	192.67	2
ACB	192.34	0	PSX	192.78	2
PSX	192.33	3	NSX	192.78	2
EDGA	192.33	2	CHX	192.80	7
EDGX	192.30	10	NQBX	192.80	1
MIAX	192.00	10	NYSE	192.90	1
MEMX	192.00	1	IEX	193.00	4
NSX	191.50	10	EDGA	193.00	3
BYX	189.60	1	BYX	193.00	1
AMEX	189.00	2	AMEX	193.00	1



Market Liquidity Theory

Big "Ask" is a big seller, but it is not necessarily a bearish sign.

Big "Bid" is a big buyer but not necessary a bullish sign.



03/22/23 09:33:49

TSLA 198.02 -- 198.08 Tesla, Inc. - Co...

TSLA ↑ 200.66 - 198.01 PCL 197.58 Q
 Last 198.05 0.47 (0.24%) Vol 8,108,048
 Lv1 198.02 198.08 VWAP: 199.21 S

MMID	BID	SIZE	MMID	ASK	SIZE
NSDQ	198.02	1	NSDQ	198.08	1
NSDQ	198.01	14	IEX	198.08	1
EDGX	198.00	173	ARCA	198.08	1
NSDQ	198.00	157	EDGX	198.08	1
ACB	198.00	30	MEMX	198.08	1
ARCA	198.00	30	BATS	198.08	1
BATS	198.00	20	ACB	198.08	1
MEMX	198.00	19	ACB	198.09	1
EDGA	198.00	2	NSDQ	198.09	0
NSDQ	197.99	0	ACB	198.10	0
ACB	197.99	0	NSDQ	198.10	0
ACB	197.98	0	NSDQ	198.11	0
NSDQ	197.98	0	NSDQ	198.12	2
ACB	197.97	0	NYSE	198.12	1
ACB	197.96	2	ACB	198.12	0
NYSE	197.96	2	ACB	198.13	2
PSX	197.84	1	MIAX	198.30	1
BYX	197.84	1	BYX	198.34	1

Montage \INET \ARCA

02/15/23 09:32:15

TSLA 213.96 -- 213.97 Tesla, Inc. - Co...

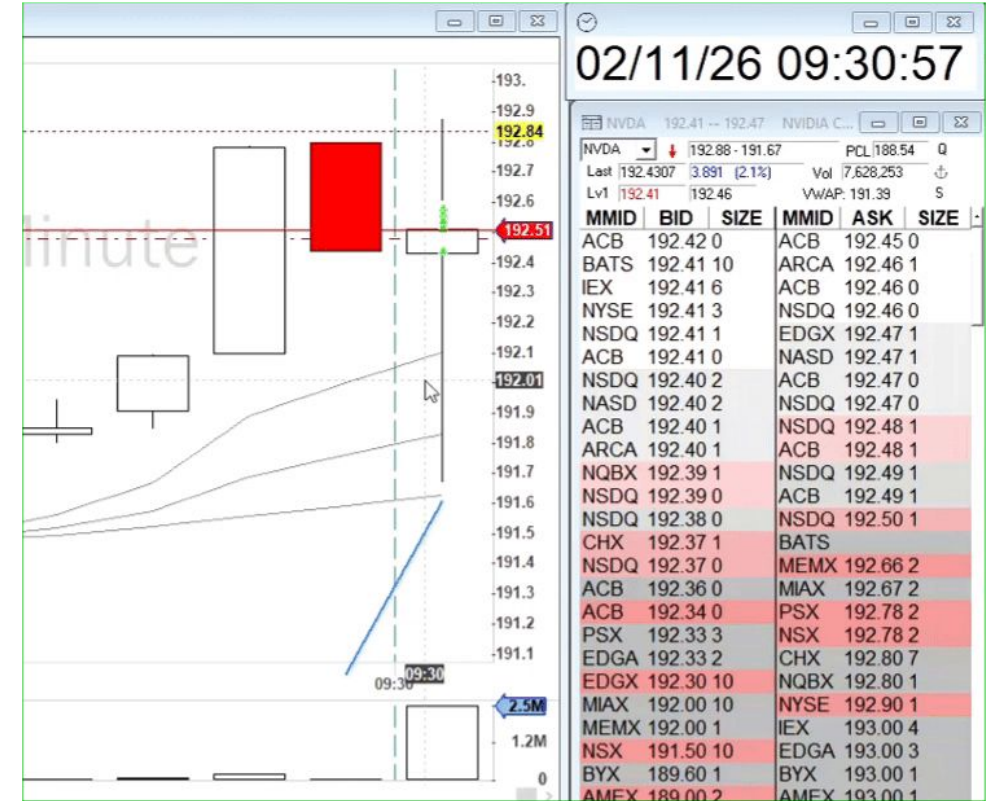
TSLA ↓ 213.98 - 210.5 PCL 209.25 Q
 Last 213.9699 4.72 (2.3%) Vol 12,024,211
 Lv1 213.9 213.96 VWAP: 212.61 S

MMID	BID	SIZE	MMID	ASK	SIZE
ACB	213.91	0	ARCA	213.96	1
EDGX	213.90	1	ACB	213.96	1
ACB	213.90	0	NSDQ	213.96	0
NSDQ	213.89	1	ACB	213.97	1
BATS	213.89	1	NSDQ	213.98	31
ACB	213.89	0	ACB	213.98	0
NYSE	213.88	4	NSDQ	213.99	24
ARCA	213.88	1	EDGX	213.99	19
ACB	213.88	0	ACB	213.99	5
ACB	213.87	1	BATS	213.99	2
NSDQ	213.86	0	MEMX	213.99	2
MEMX	213.85	1	NSDQ	214.00	365
NSDQ	213.83	0	ACB	214.00	21
NSDQ	213.82	0	MIAX	214.00	1
NSDQ	213.80	0	NSX	214.00	
CHX	213.70	10	NSDQ	214.01	44
MIAX	213.61	5	NYSE	214.17	1
EDGA	213.61	5	CHX	214.20	10

Montage \INET \ARCA

Main Problems with Traditional Level 2 Montage:

- Moving too fast for beginners
- Technical and ambiguous to read it
- Missing time history (no *time-axis*) to look back



too fast to read & react

SYMBOL
QQQ

Config

UPDATE EVERY
100ms

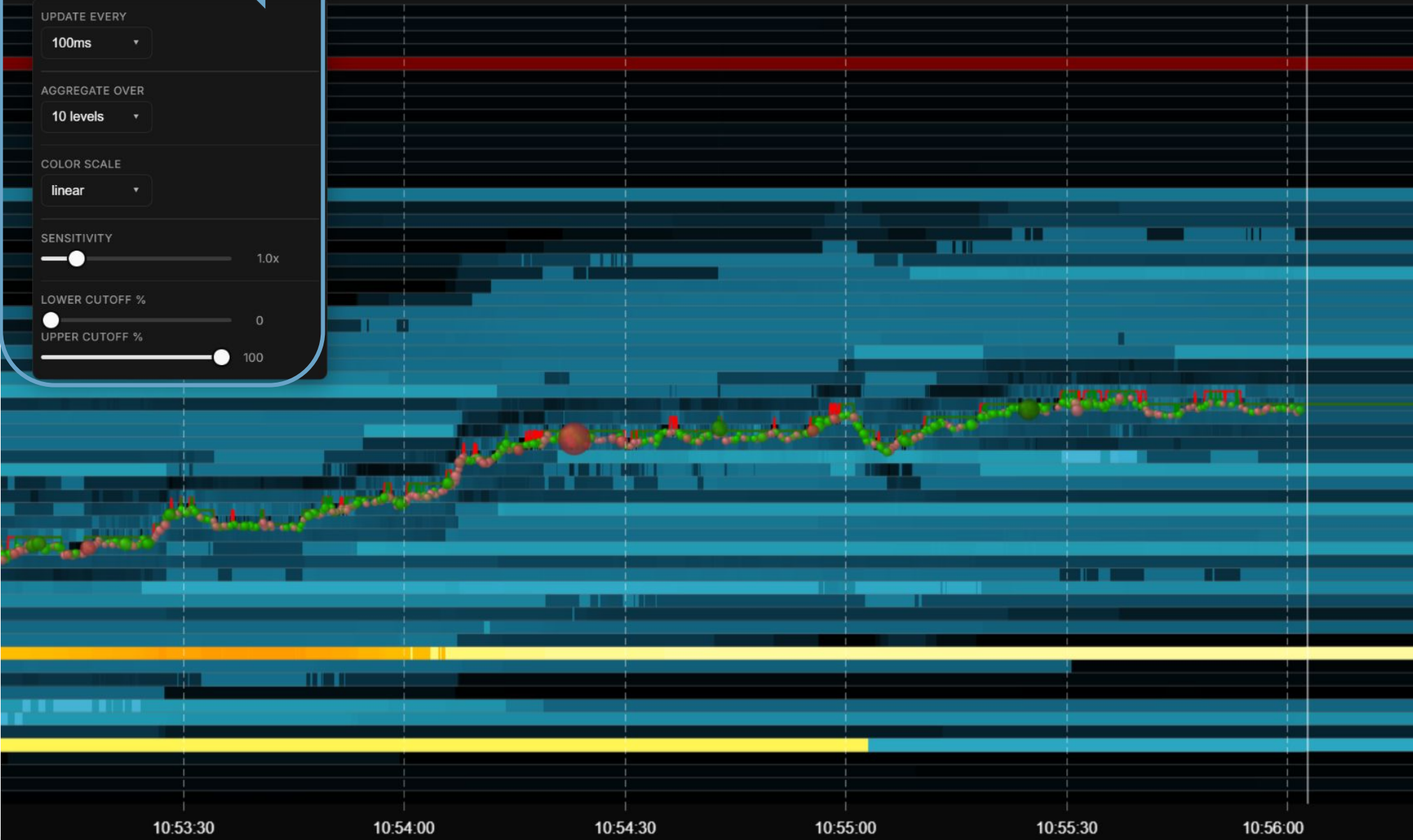
AGGREGATE OVER
10 levels

COLOR SCALE
linear

SENSITIVITY
1.0x

LOWER CUTOFF %
0

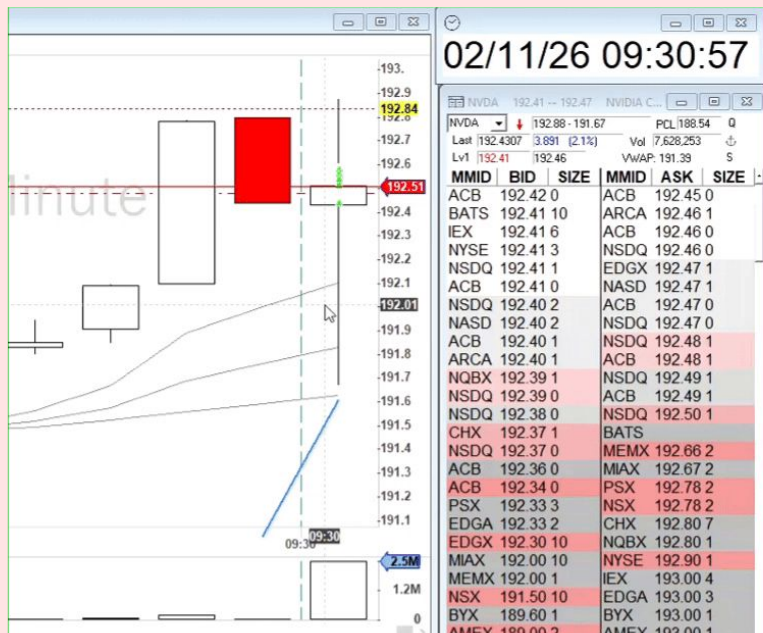
UPPER CUTOFF %
100



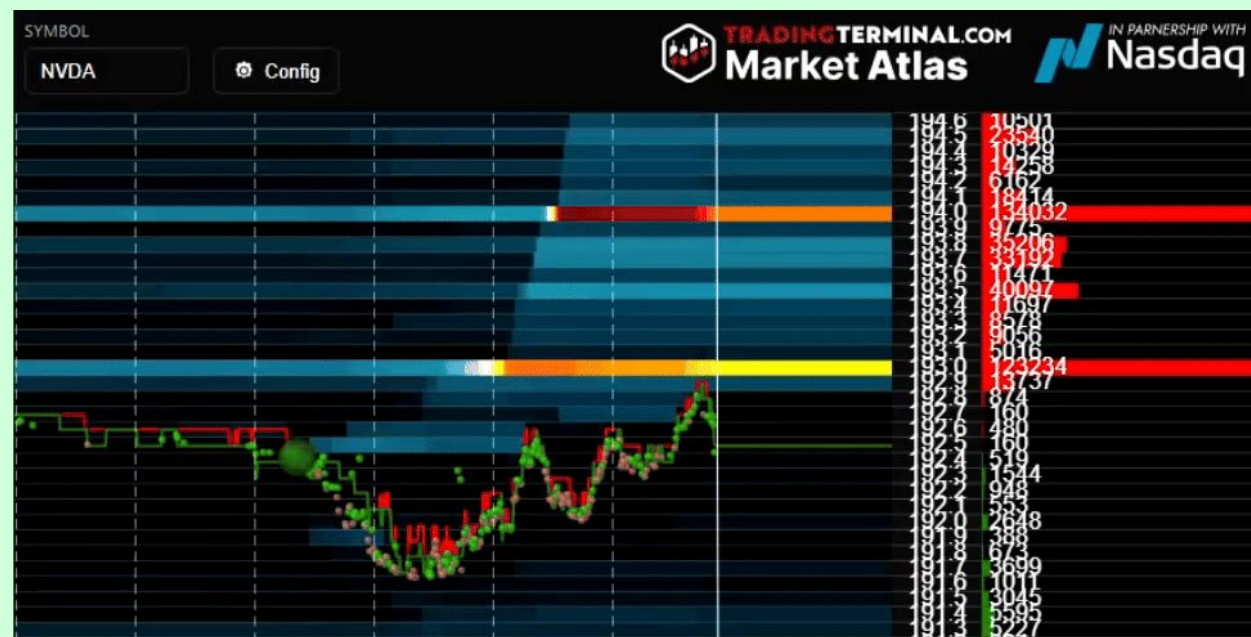
610.4	159
610.3	261
610.2	204
610.1	157
610.0	29423
609.9	74
609.8	211
609.7	133
609.6	30
609.5	352
609.4	307
609.3	217
609.2	161
609.1	60
609.0	5887
608.9	1575
608.8	1546
608.7	650
608.6	4750
608.5	1643
608.4	9180
608.3	4881
608.2	5110
608.1	4952
608.0	5304
607.9	5560
607.8	8760
607.7	902
607.6	906
607.5	3063
607.4	3200
607.3	3253
607.2	1485
607.1	1380
607.0	2691
606.9	9221
606.8	4760
606.7	1181
606.6	8915
606.5	5186
606.4	5297
606.3	9182
606.2	1826
606.1	5165
606.0	7135
605.9	2566
605.8	643
605.7	4137
605.6	14
605.5	20243
605.4	130
605.3	220
605.2	10
605.1	4546
605.0	7936
604.9	855
604.8	11165
604.7	27
604.6	94
604.5	240
604.4	22

Go to latest

Why visualization makes a huge difference in trading?



- Only shows the **current** bid/ask depth
- Track big orders **mentally**
(more technical)

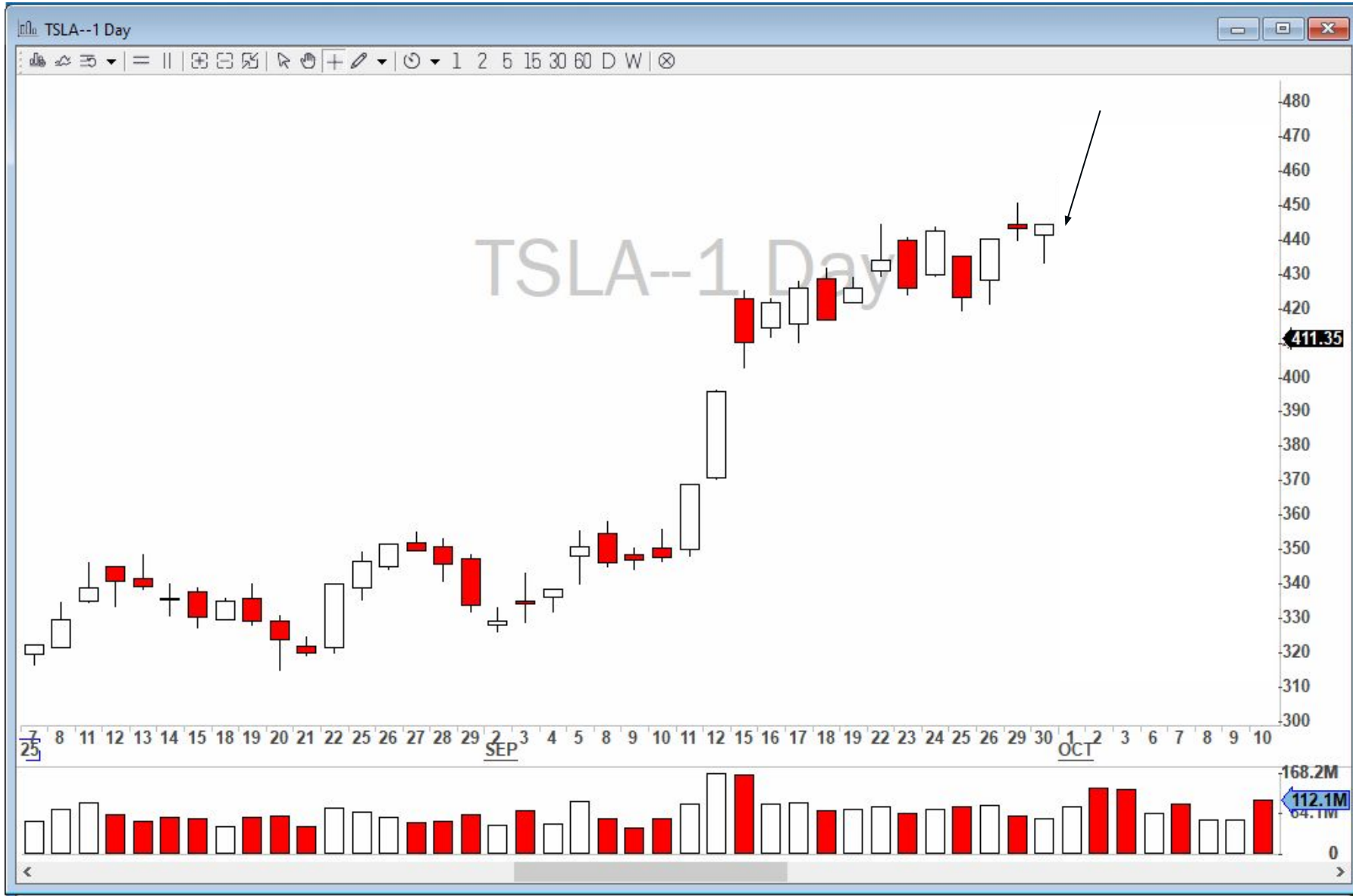


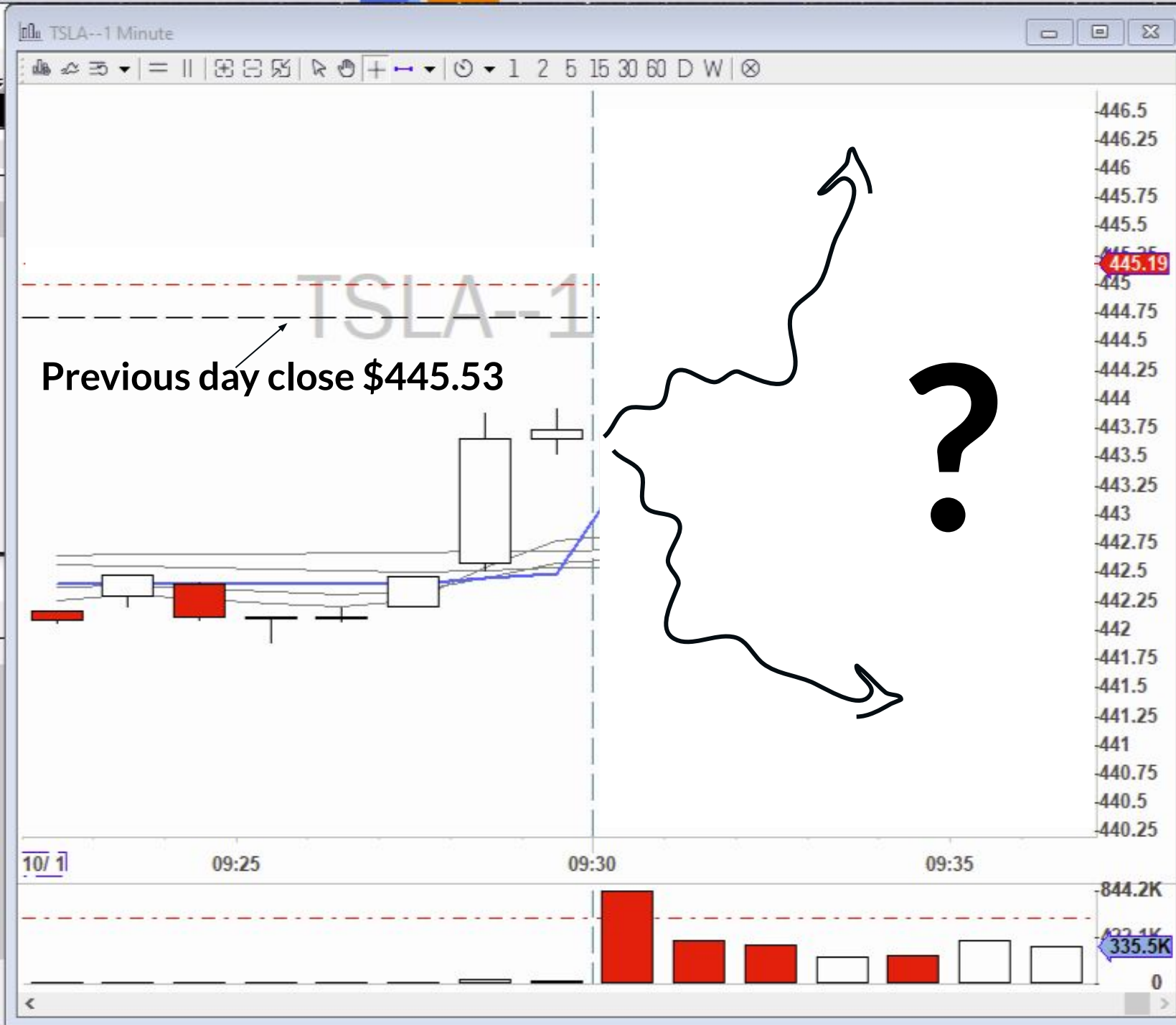
- Provide **historical** context
- Color intensity = **significant** liquidity levels
(easy to learn & more focused)

Using Market Atlas for Day Trading Systems

Example 1

Example 1: October 1, 2025.TSLA daily chart.





Can we meaningfully predict the price direction at the Open?

Indicators we have:

Candlesticks
Moving averages
 9, 20 EMA
 50, 200 MA
 VWAP

Market Atlas
(Depth of Market)

Big Ask Liquidity at \$446

9:35 am ET



10/01/25 09:35:00

TSLA 445.18 -- 445.28 Tesla, Inc. - Common ...

TSLA ↑ 446.1 - 440.75 PCL 444.72 Q
 Last 445.1939 0.474 (0.11%) Vol 5,324,162
 Lv1 445.18 445.28 Vwap: 442.84 S

MMID	BID	SIZE	MMID	ASK	SIZE
NSDQ	445.18	1	NSDQ	445.26	0
NSDQ	445.16	1	NSDQ	445.27	0
NSDQ	445.15	1	NSDQ	445.28	0
NSDQ	445.14	1	NSDQ	445.29	0
ACB	445.14	0	NSDQ	445.32	1
NSDQ	445.13	1	ACB	445.33	0
ACB	445.13	0	ACB	445.34	0
ACB	445.11	0	ACB	445.39	0
BATS	445.10	2	EDGX	445.40	4
ACB	445.10	0	MEMX	445.40	1
ACB	445.06	0	ACB	445.43	0
EDGX	445.02	1	ACB	445.45	0
ARCA	444.79	11	CHX	445.60	10
MEMX	444.76	1	ARCA	445.61	1
CHX	444.40	10	BATS	445.80	1
NYSE	444.08	1	MIAX	445.85	2
MIAX	444.00	2	NYSE	446.07	1
BYX	443.86	1	IEX	448.00	1
IEX	443.50	1	EDGA	449.31	1
EDGA	440.21	1	PSX	449.97	1
AMEX	433.00	2	AMEX	450.55	1
PSX	421.61	1	BYX	450.55	1
NQBX	421.61	1	NSX	460.00	1
NSX	421.61	1	NQBX	466.10	1

Montage \INET\ARCA



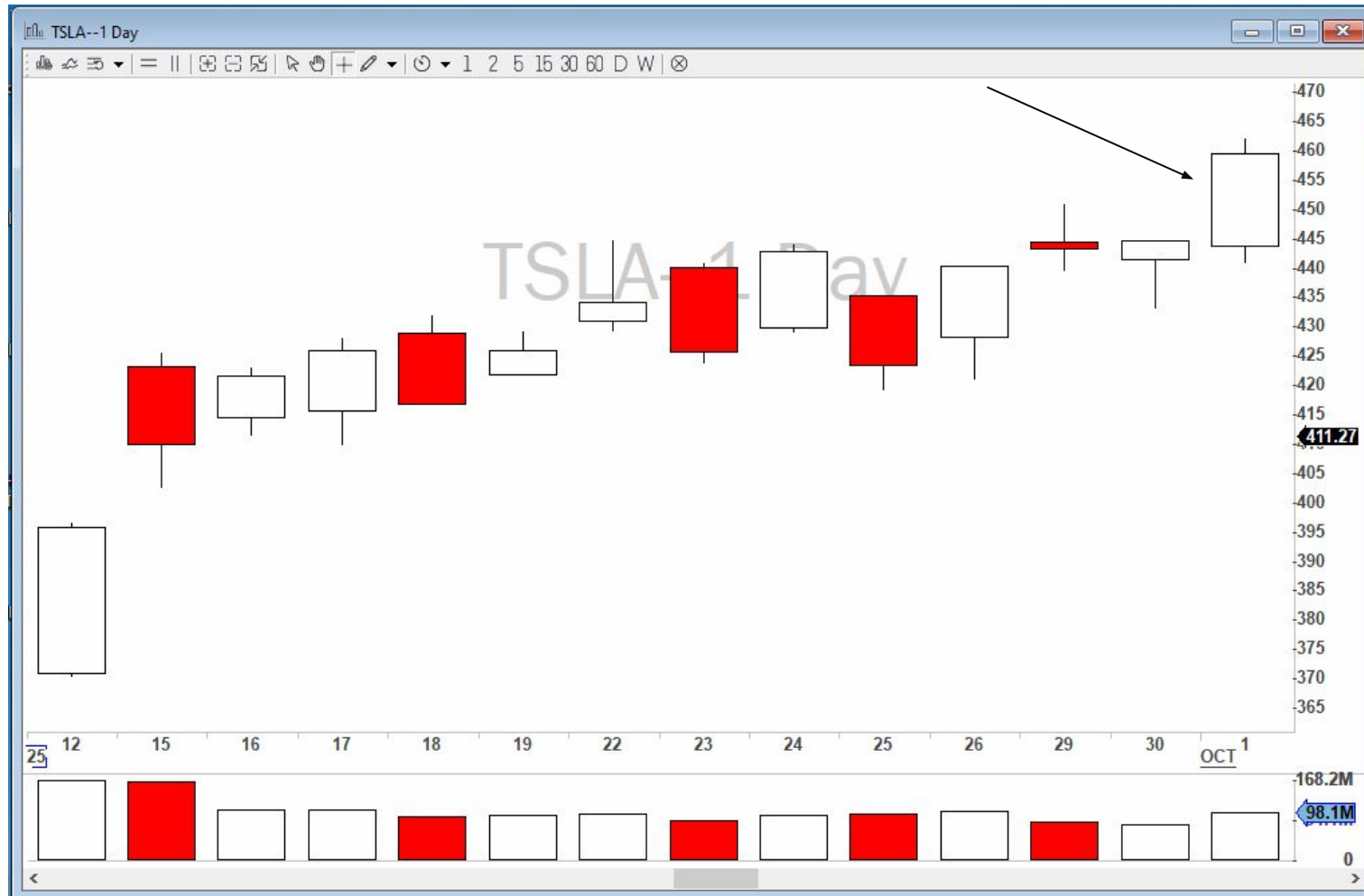
10/01/25 09:36:44

TSLA	445.18	--	445.28	Tesla, Inc. - Common ...
TSLA	↑	446.1	- 440.75	PCL 444.72 Q
Last	445.1939	0.474	(0.11%)	Vol 5,324,162
Lv1	445.18	445.28		VWAP: 442.84 S





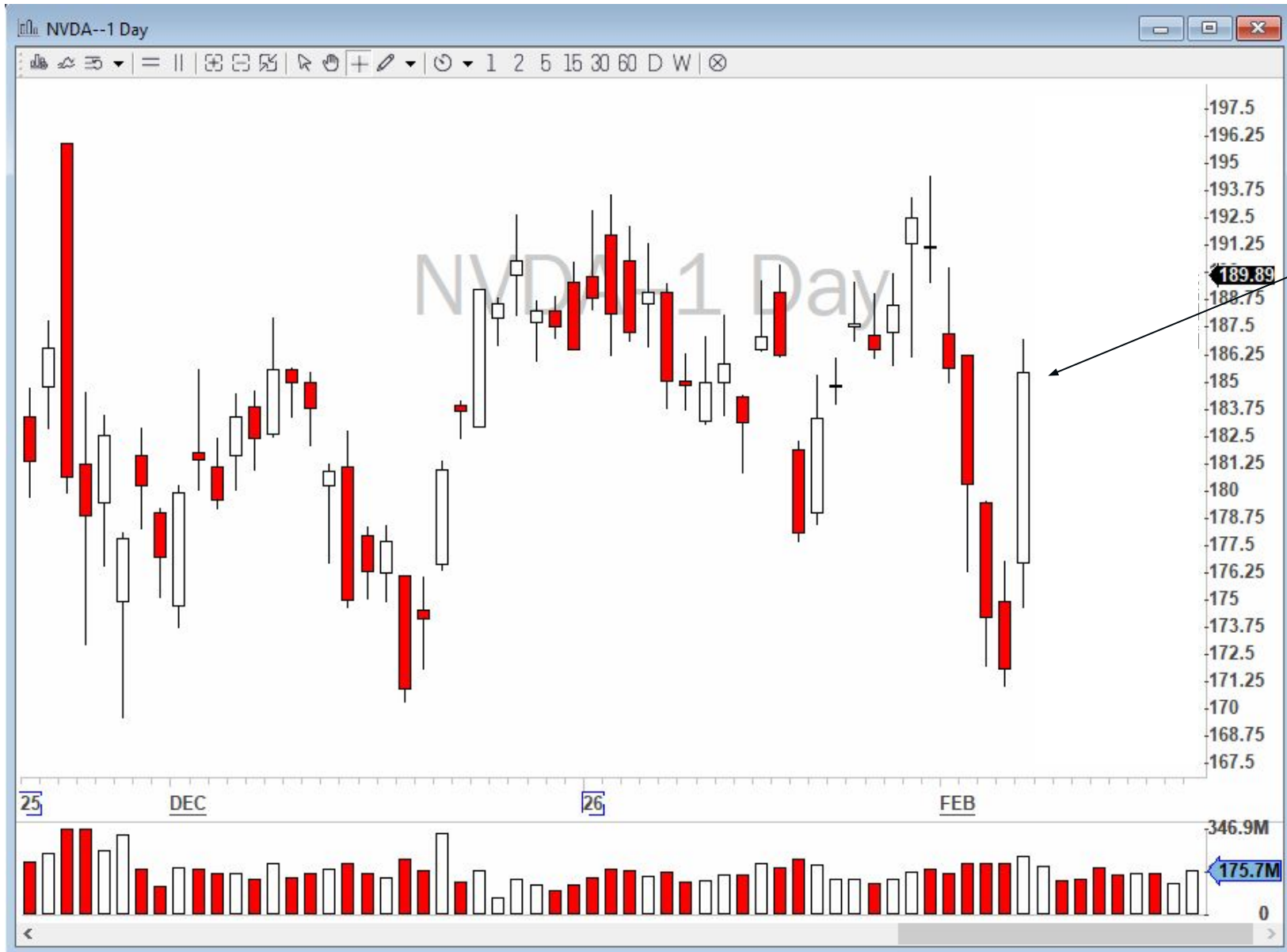
October 1, 2025.TSLA daily chart and rest of the day



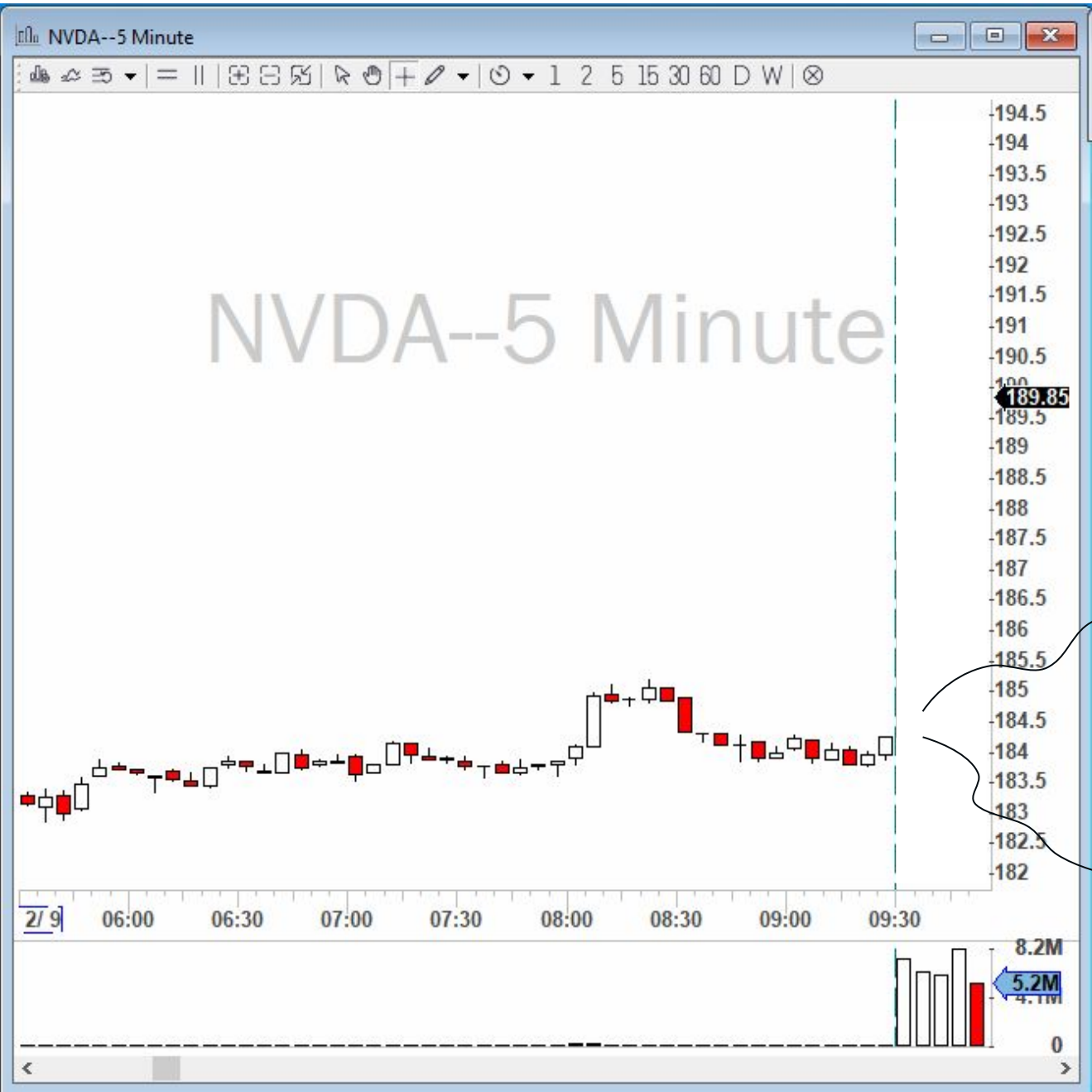
Using Market Atlas for Day Trading Systems

Example 2

Example 2: NVDA, February 09, 2026



Strong day Feb 6, 2026. Now what happens in Feb 9?

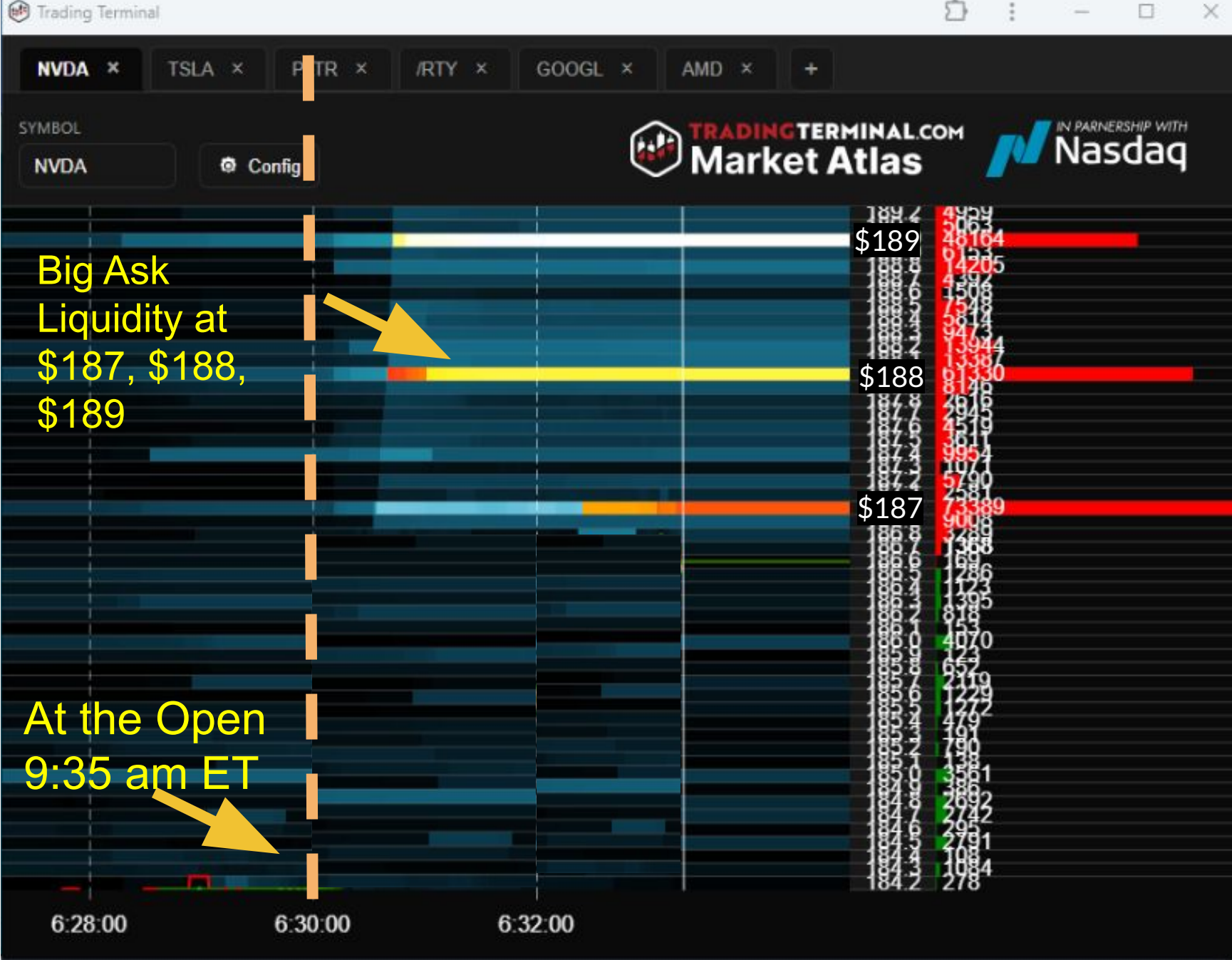


Can we meaningfully predict the price direction at the Open?

Indicators we have:

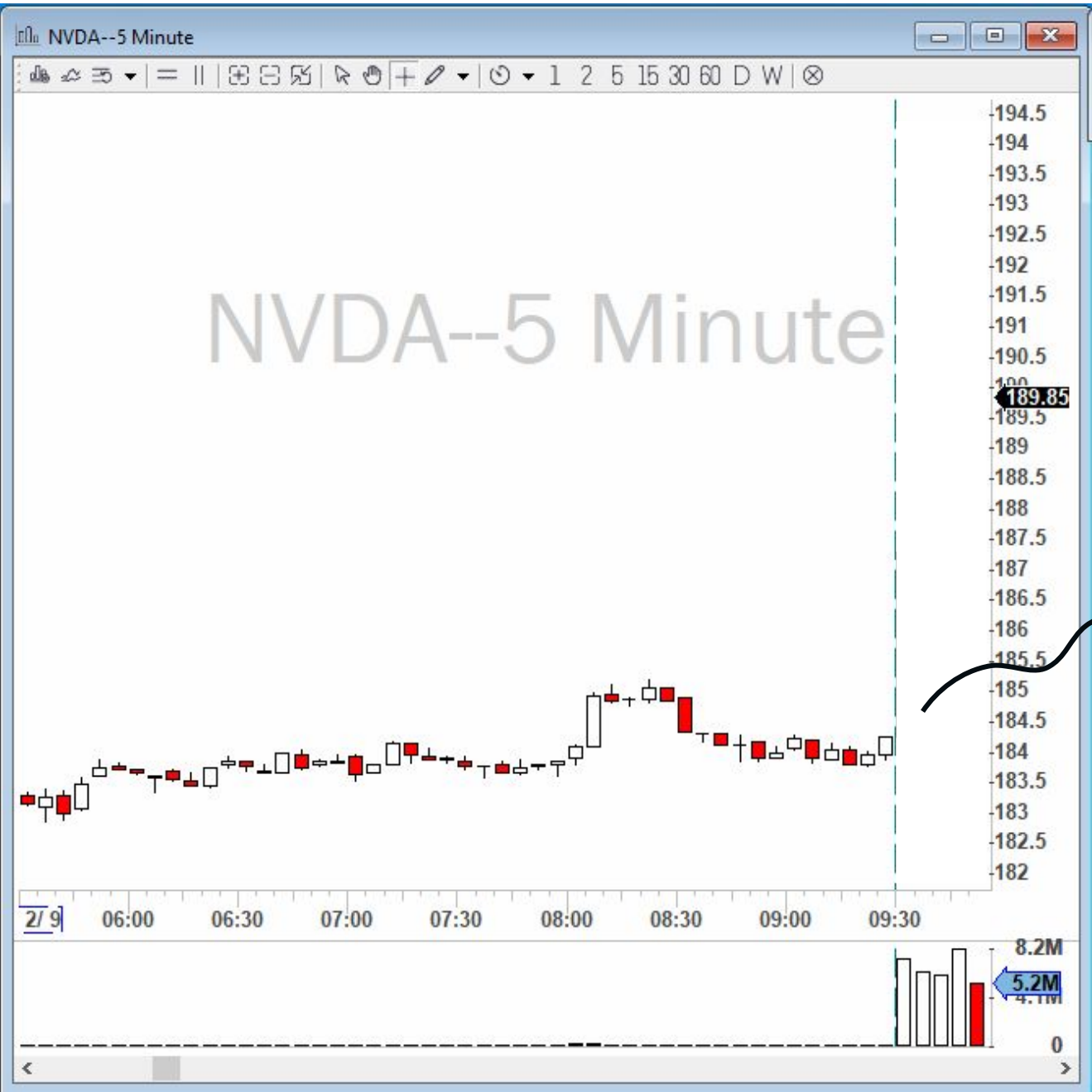
- Candlesticks*
- Moving averages*
- 9, 20 EMA*
- 50, 200 MA*
- VWAP*

Market Atlas
(Depth of Market)



Observations:

1. Previous day close was very **strong** (Feb 6, 2026)
2. Before the Open big liquidity available to the upside.
3. If Open price stays above VWAP can be long for Opening Range Breakout (ORB)



TradeBook:
 1-min or 5-min Opening Range
 Breakout

Indicators we use:

Candlesticks: 1min & 5-min
Moving averages
9, 20 EMA, 50, 200 MA
VWAP

Market Atlas
(Depth of Market)

Opening Range Breakout Strategy

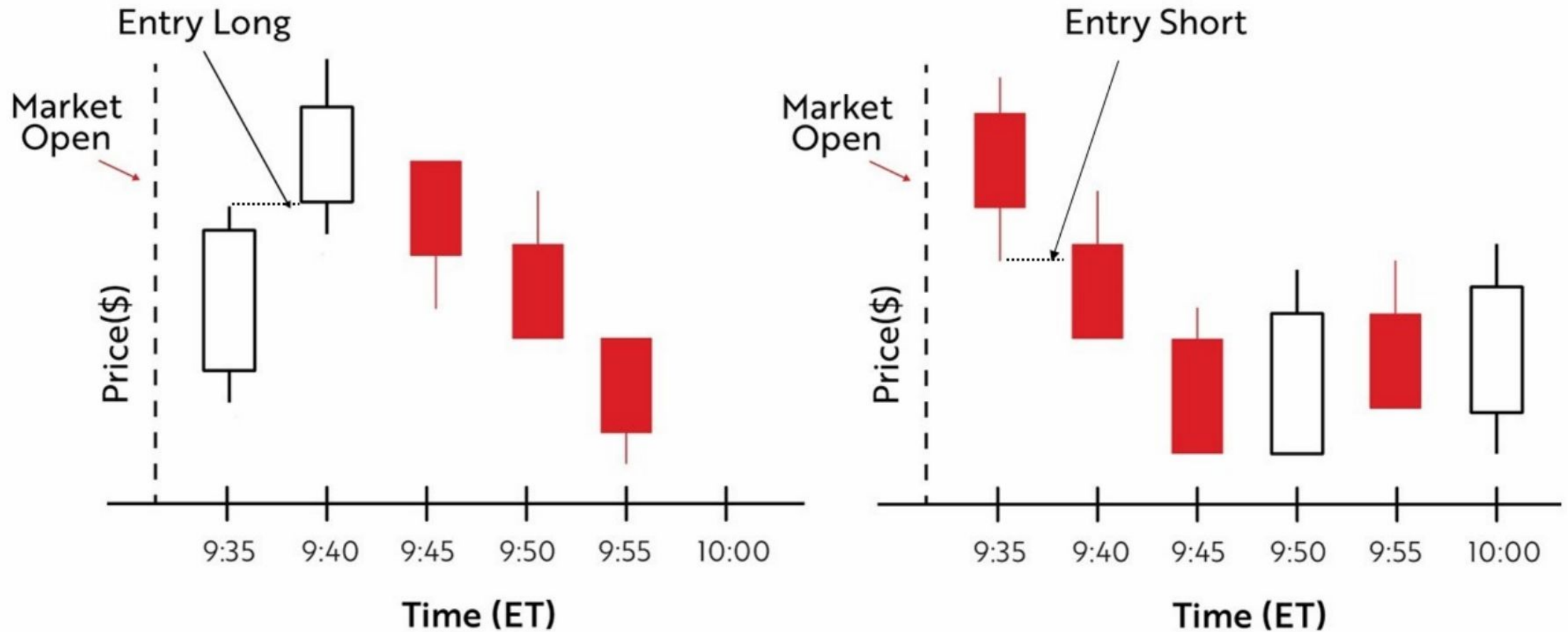
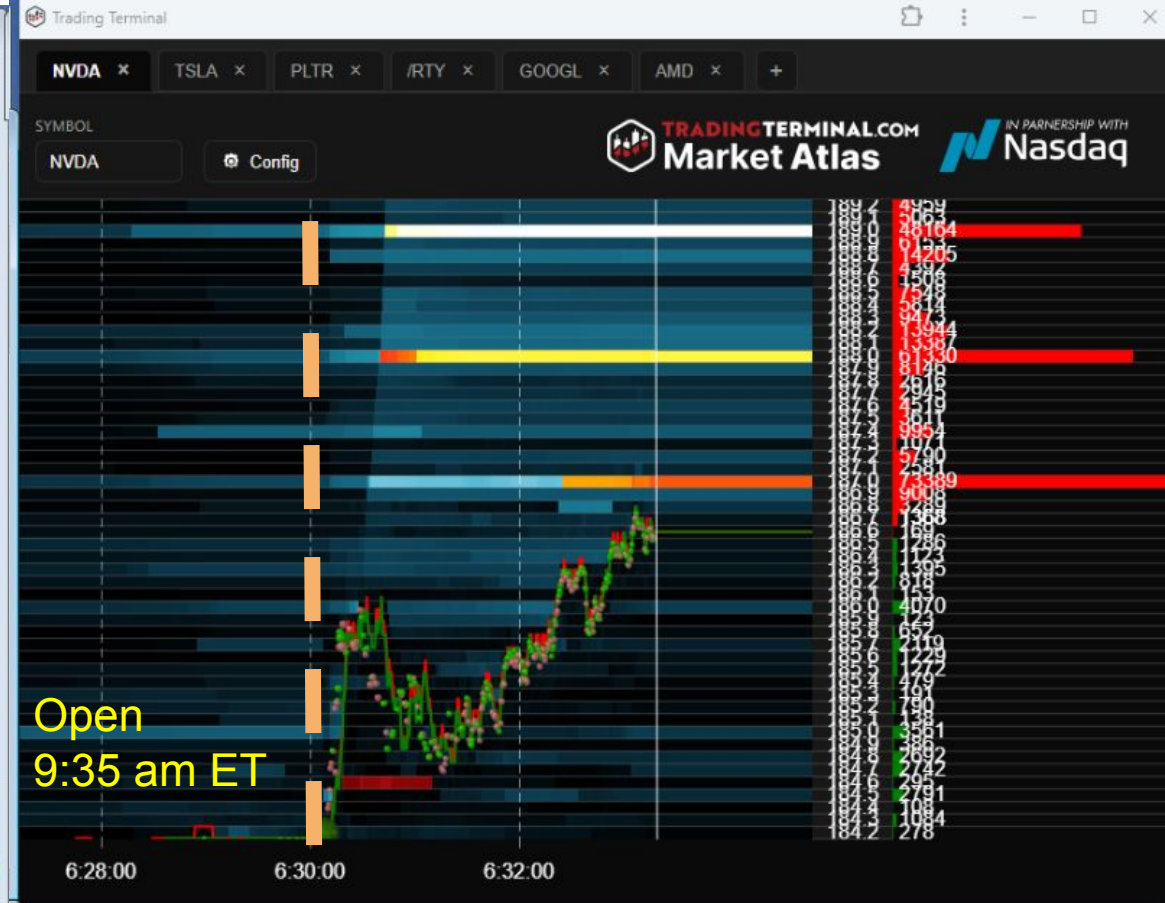
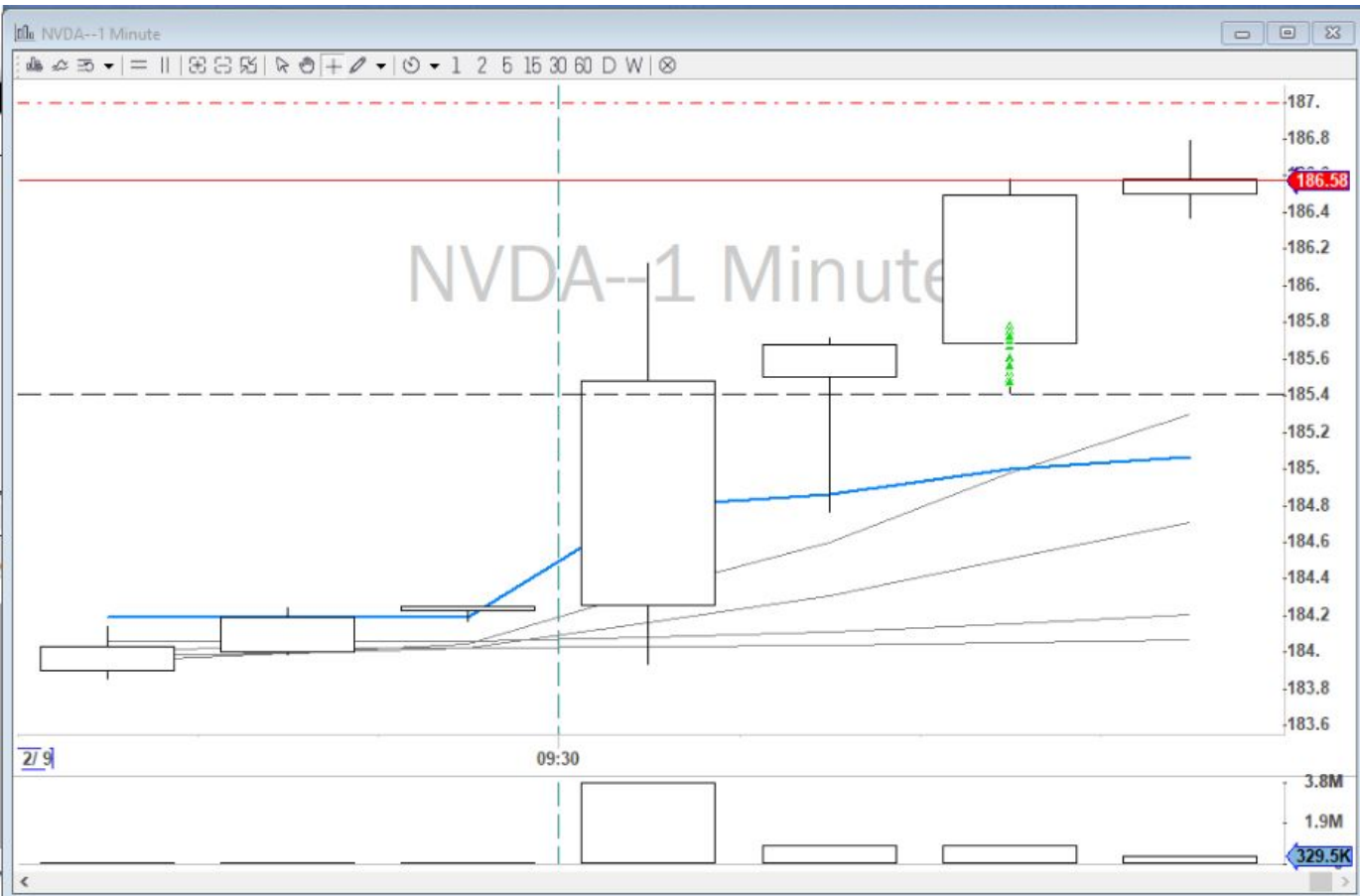


Figure 1: Conceptual illustrations of where a trader would enter into a trade using the ORB strategy for going long (as shown on the left-hand side) and for going short (as shown on the right-hand side).

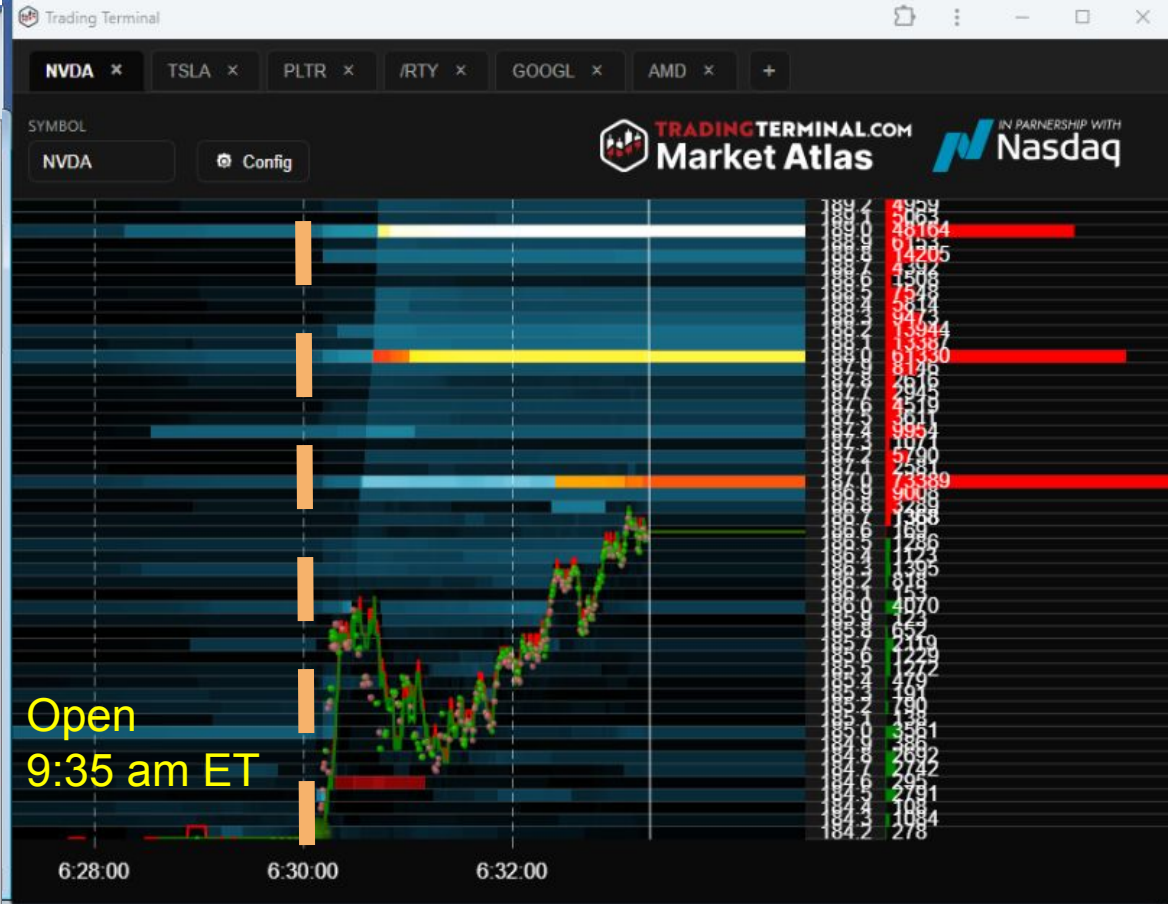
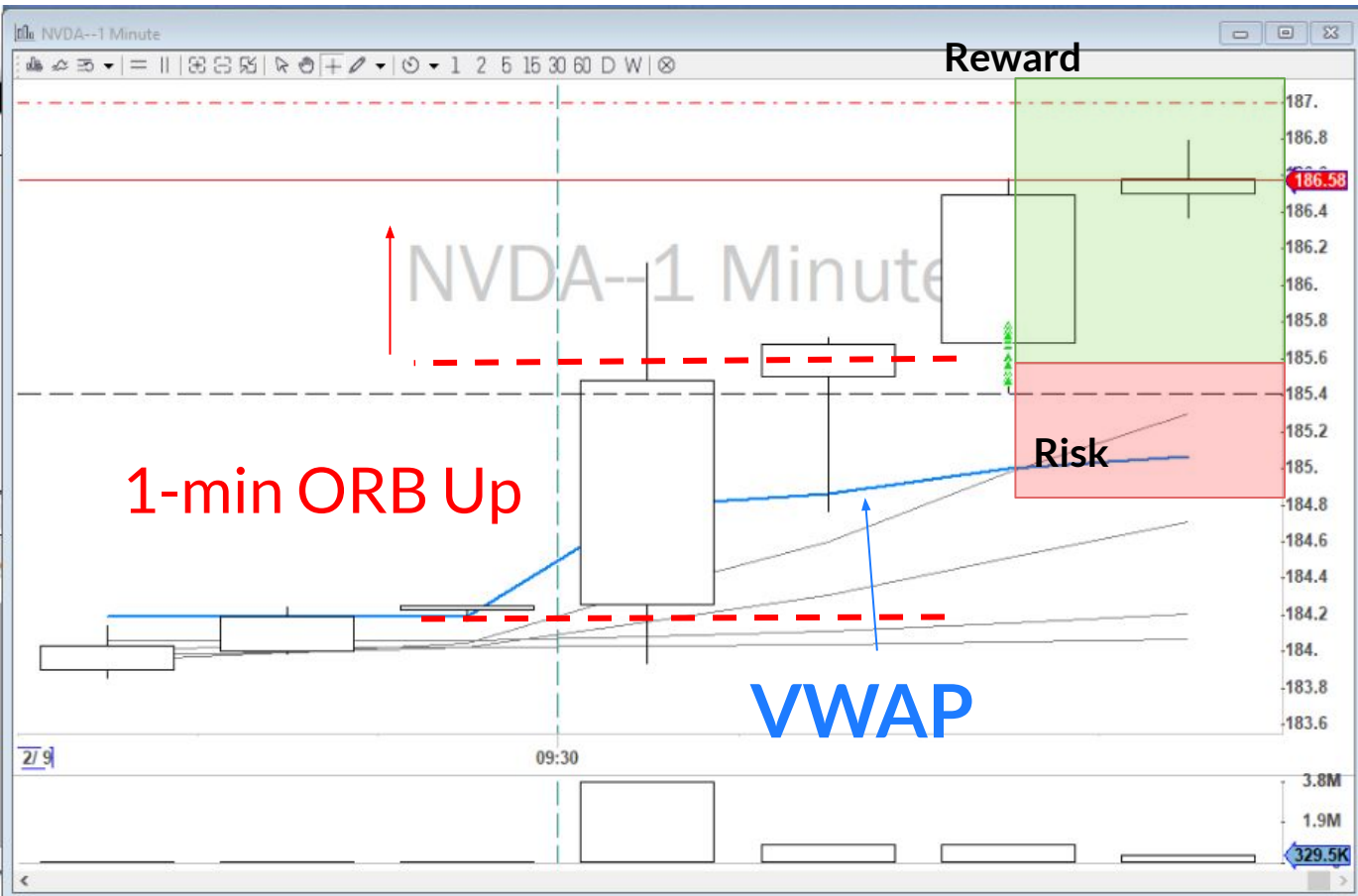
02/09/26 09:33:18

NVDA	186.57	--	186.62	NVIDIA C...	
NVDA	↓	186.8	-183.93	PCL 185.41	Q
Last	186.5897	1.18	[0.64%]	Vol	13,194,138
Lv1	186.58	186.63		VWAP	185.07
				S	



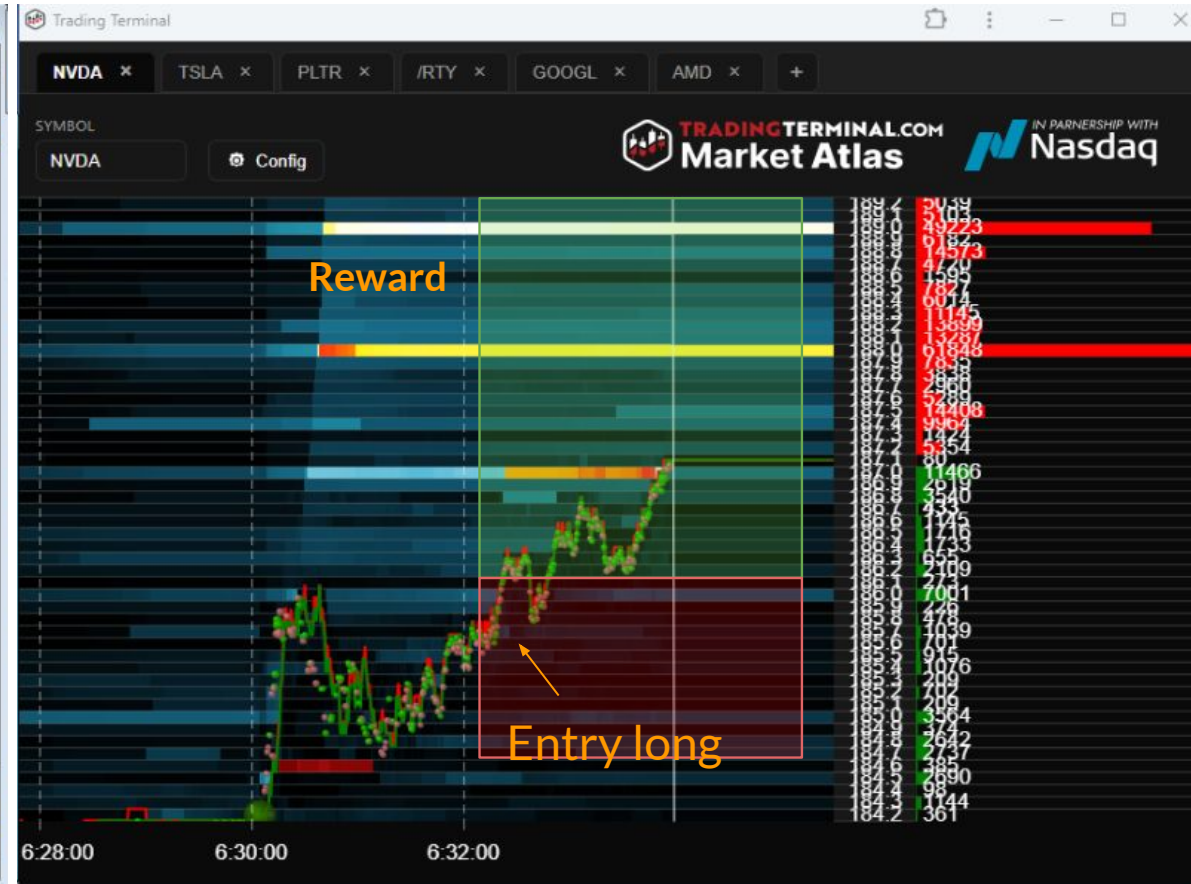
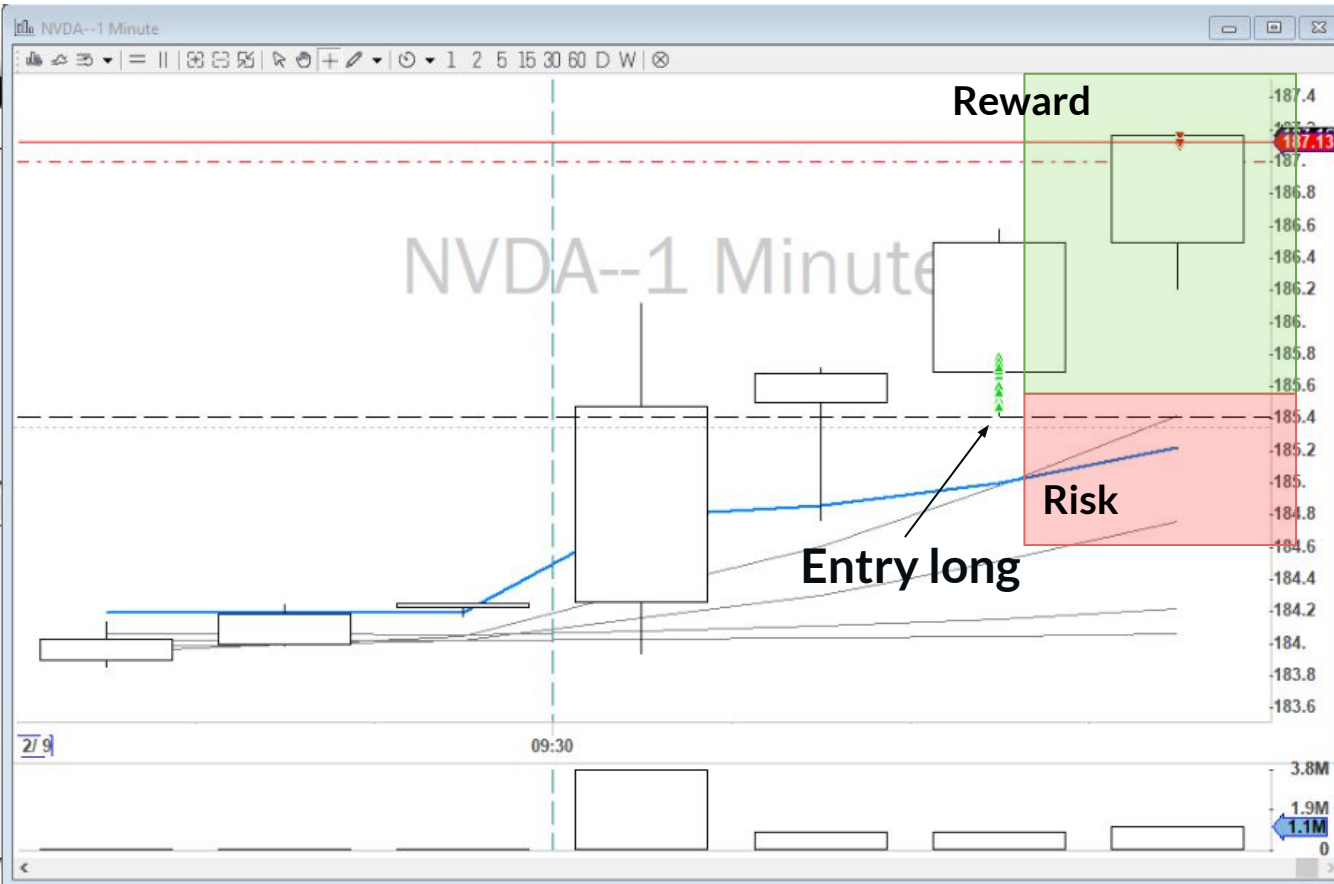
02/09/26 09:33:18

NVDA	186.57	--	186.62	NVIDIA C...	
NVDA	186.8	-	183.93	PCL 185.41	Q
Last	186.5897	1.18	[0.64%]	Vol	13,194,138
Lv1	186.58	186.63		VWAP	185.07

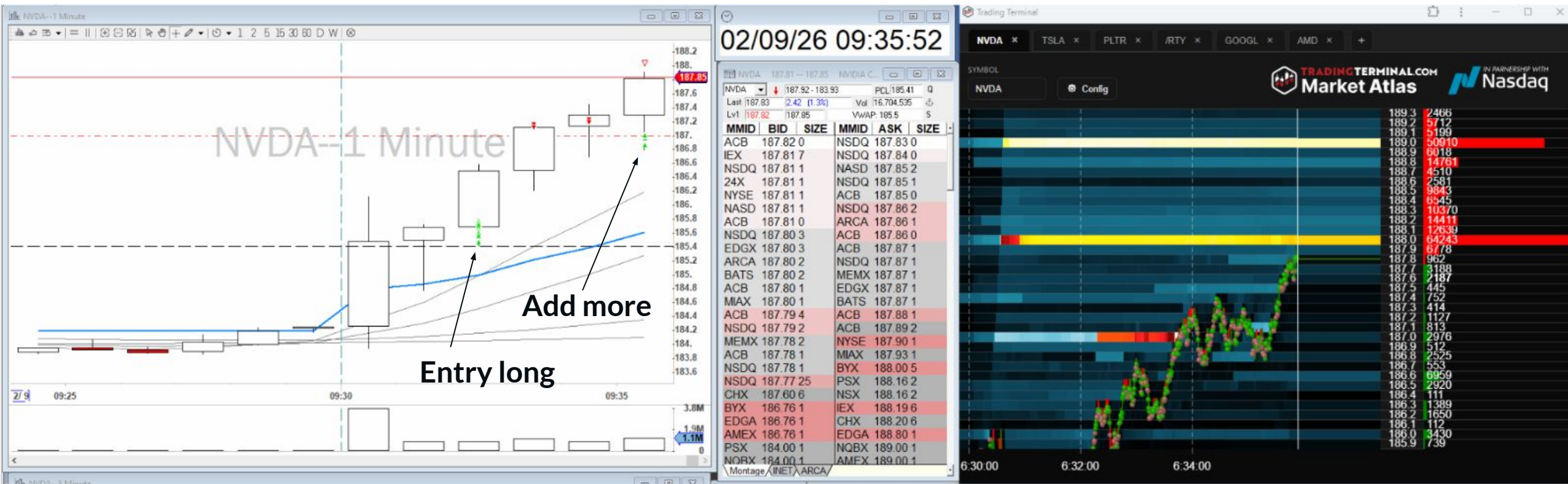


02/09/26 09:33:58

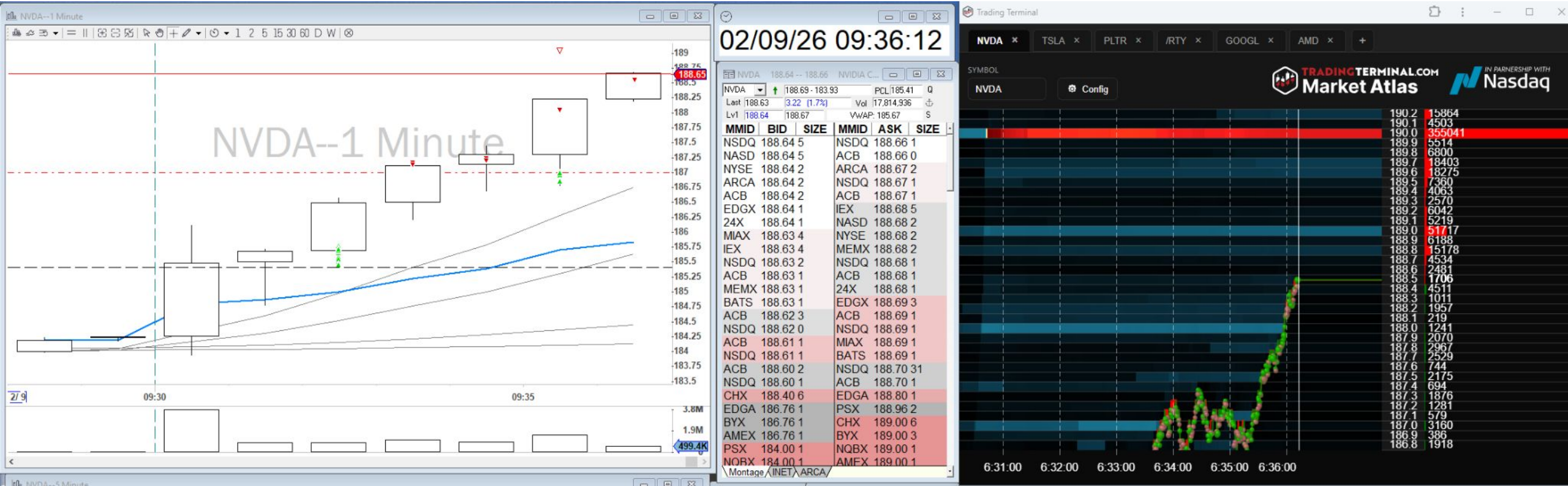
NVDA	187.12	--	187.16	NVIDIA C...			
NVDA	187.18	↓	183.93	PCL 185.41	Q		
Last	187.1201	1.71	(0.92%)	Vol	14,128,025	↓	
Lvl	187.13	187.13		VWAP:	185.18	\$	



Depth of Market Can Help in Trade Management (entry, exit, stop loss)

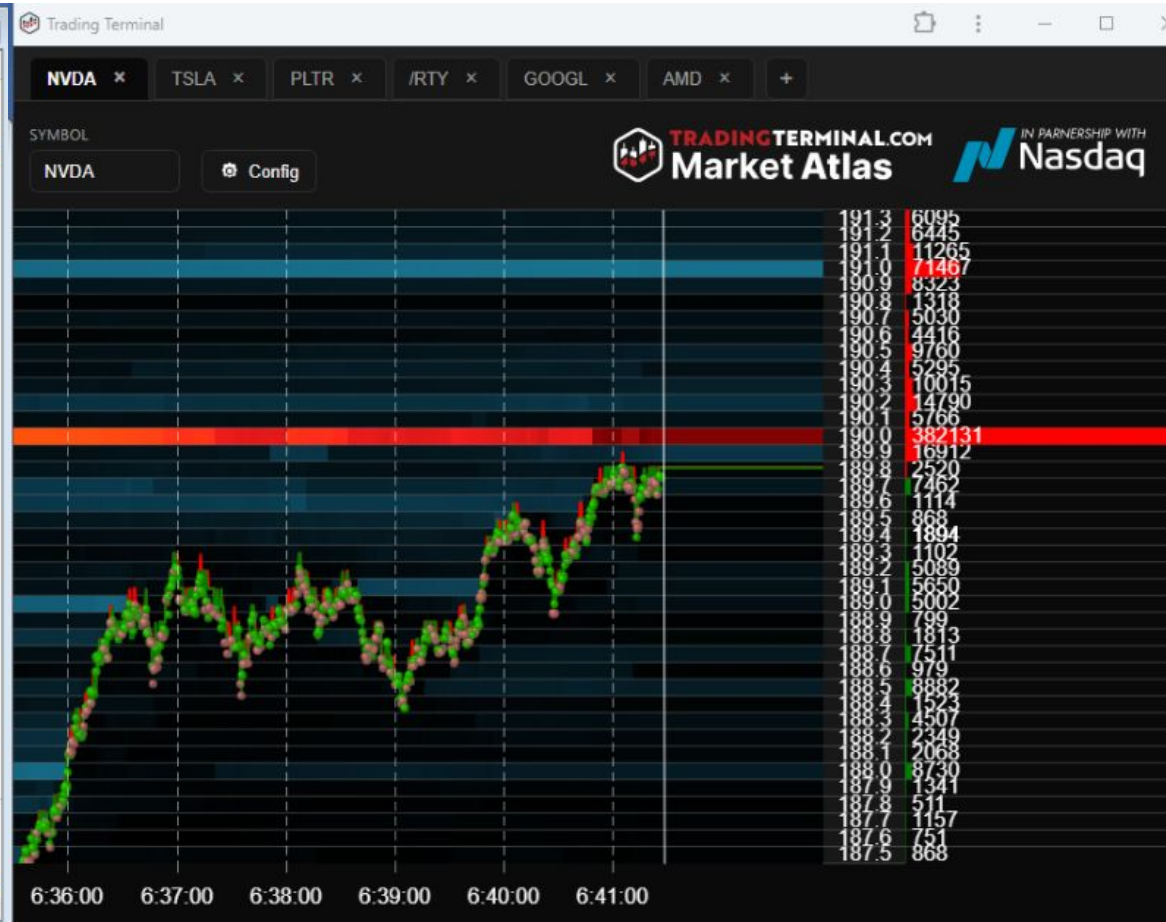
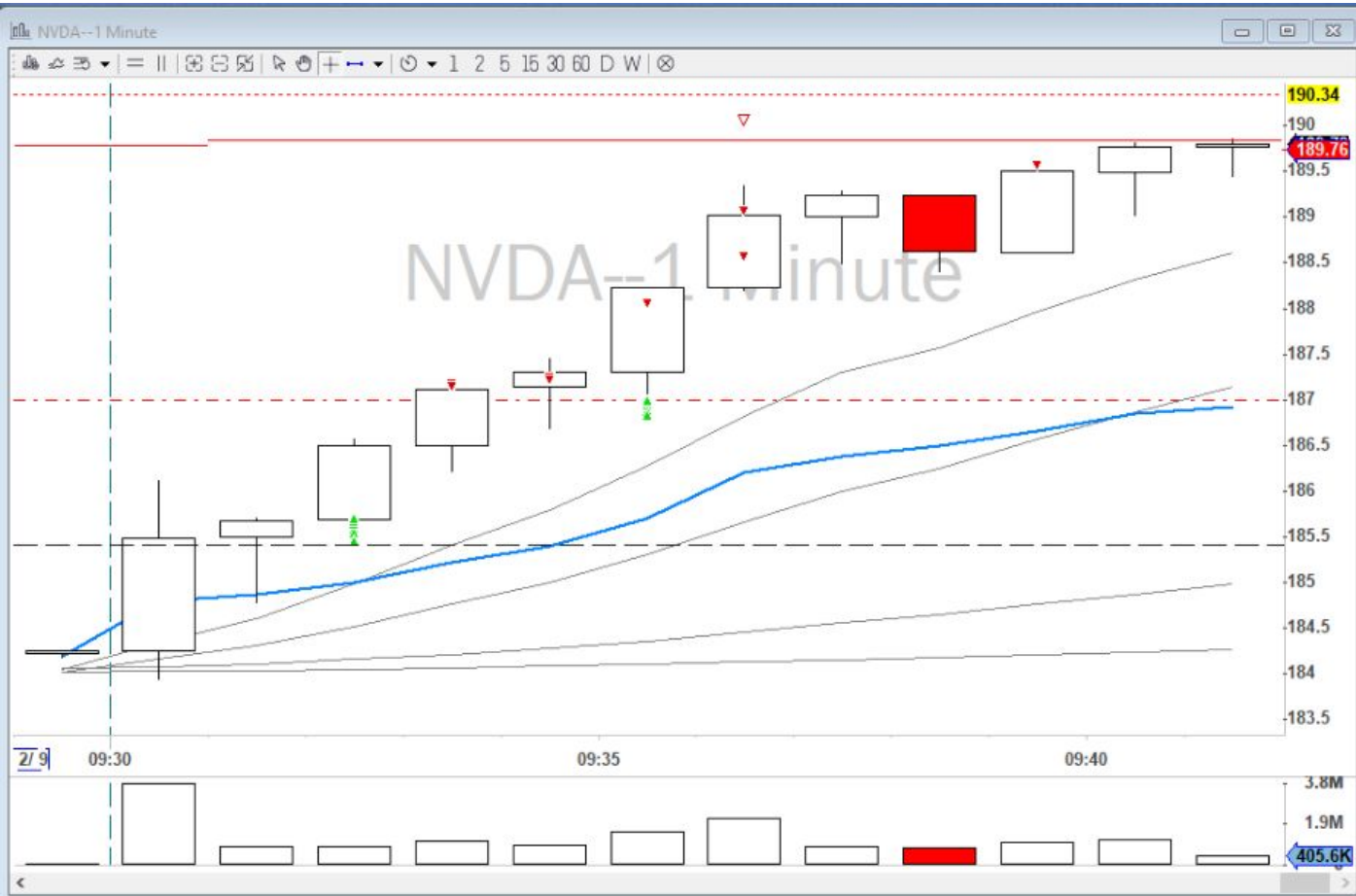


Depth of Market Can Help Staying Longer in Trade



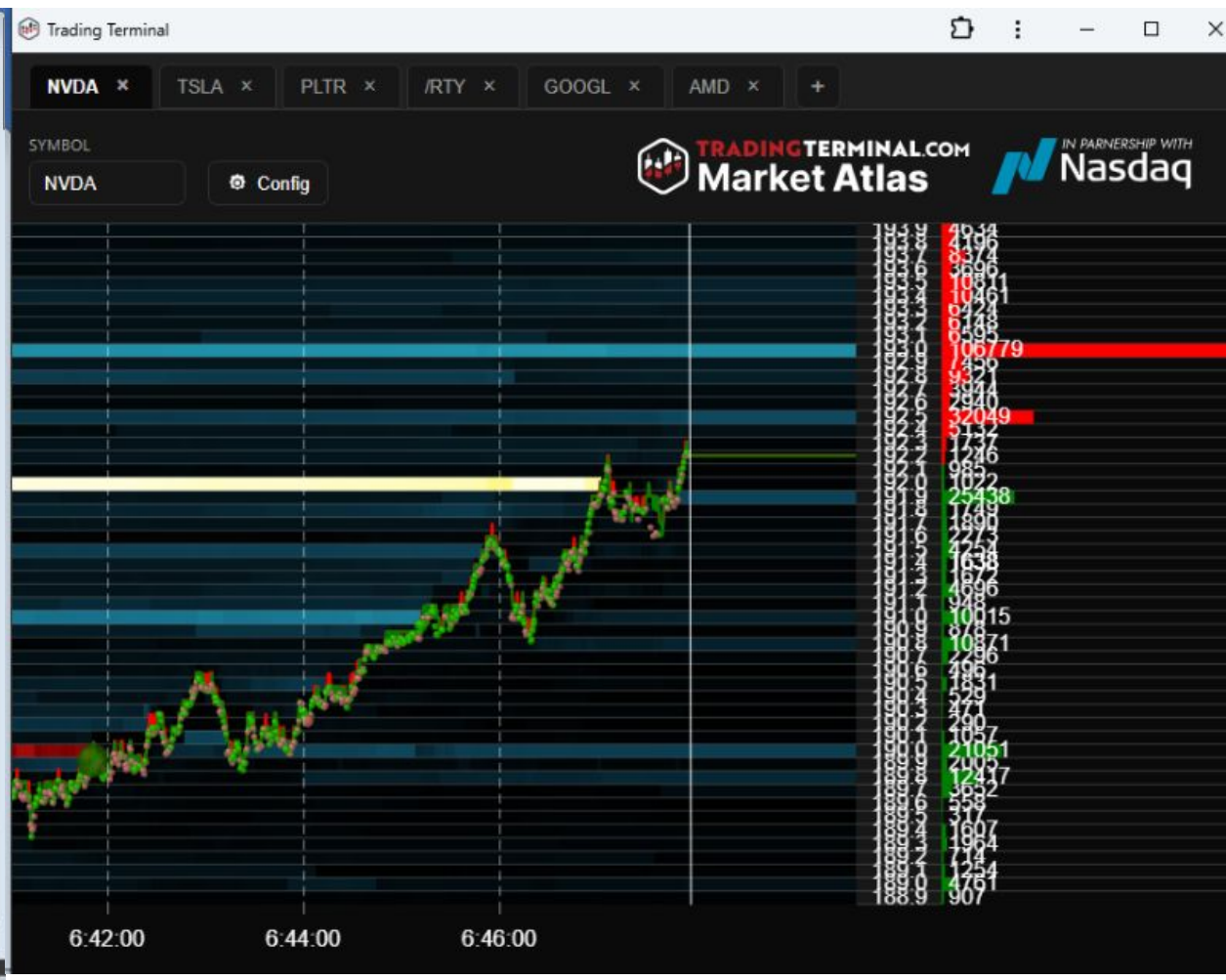
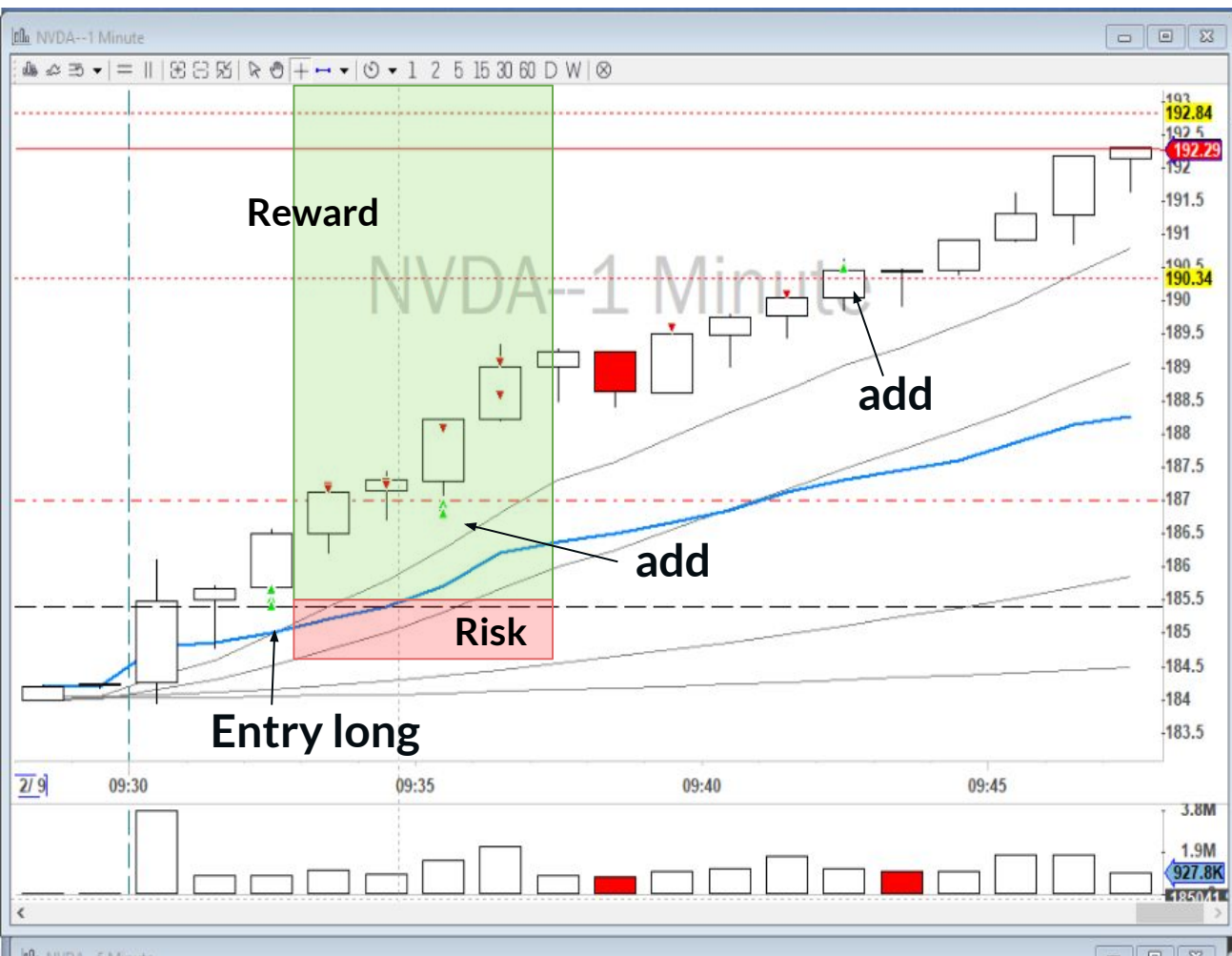
02/09/26 09:41:27

NVDA	189.75	--	189.77	NVIDIA C...			
NVDA	↓	189.87	-	183.93	PCL	185.41	Q
Last	189.765	4.355	(2.3%)	Vol	25,360,587		
Lv1	189.75	189.76		VWAP	186.69		S

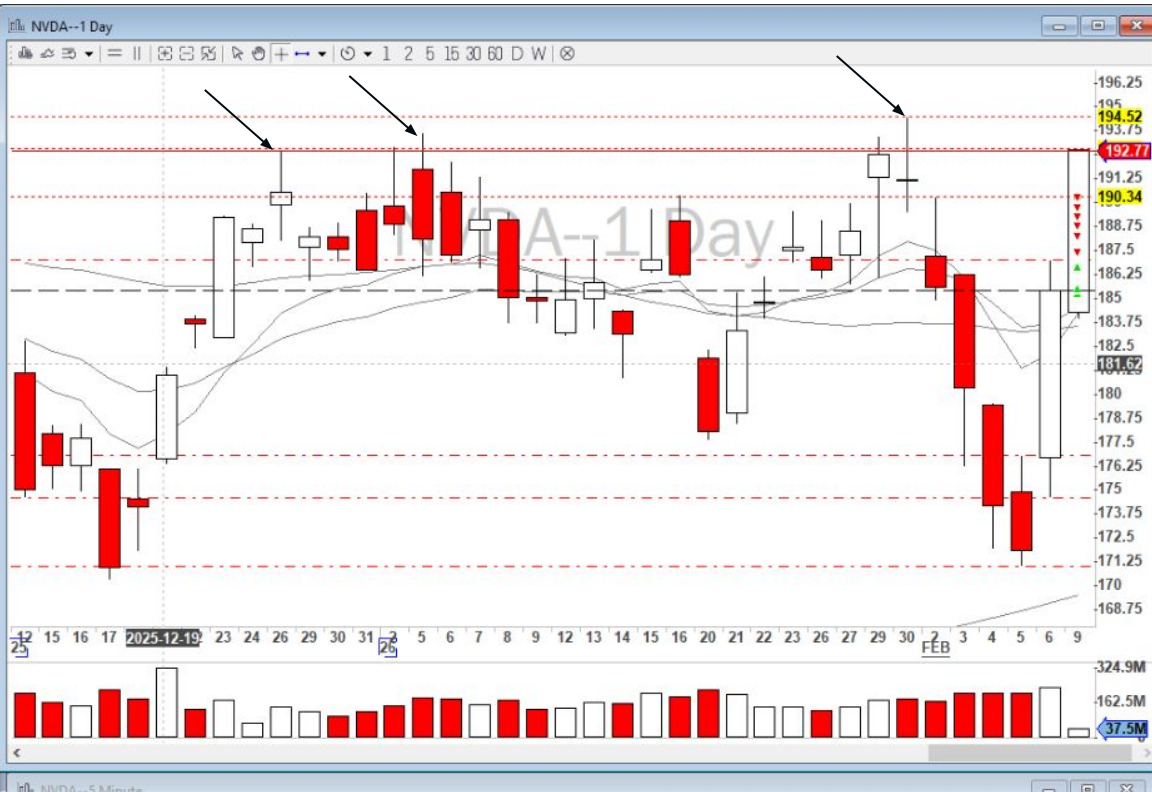


02/09/26 09:47:54

NVDA	192.27 -- 192.29	NVIDIA C...		
NVDA	↑ 192.33 - 183.93	PCL 185.41	Q	
Last	192.29	6.88 (3.7%)	Vol 36,762,800	⚓
Lv1	192.26	192.3	VWAP: 188	S

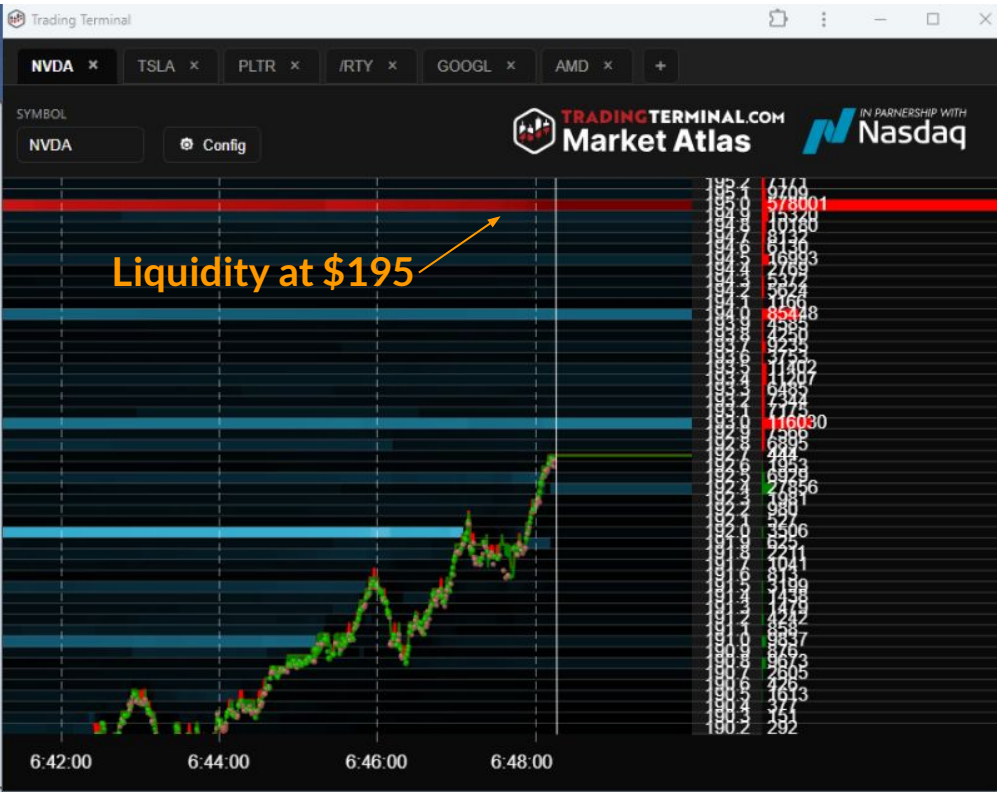


Daily levels and Depth of Market should be checked during the trade.



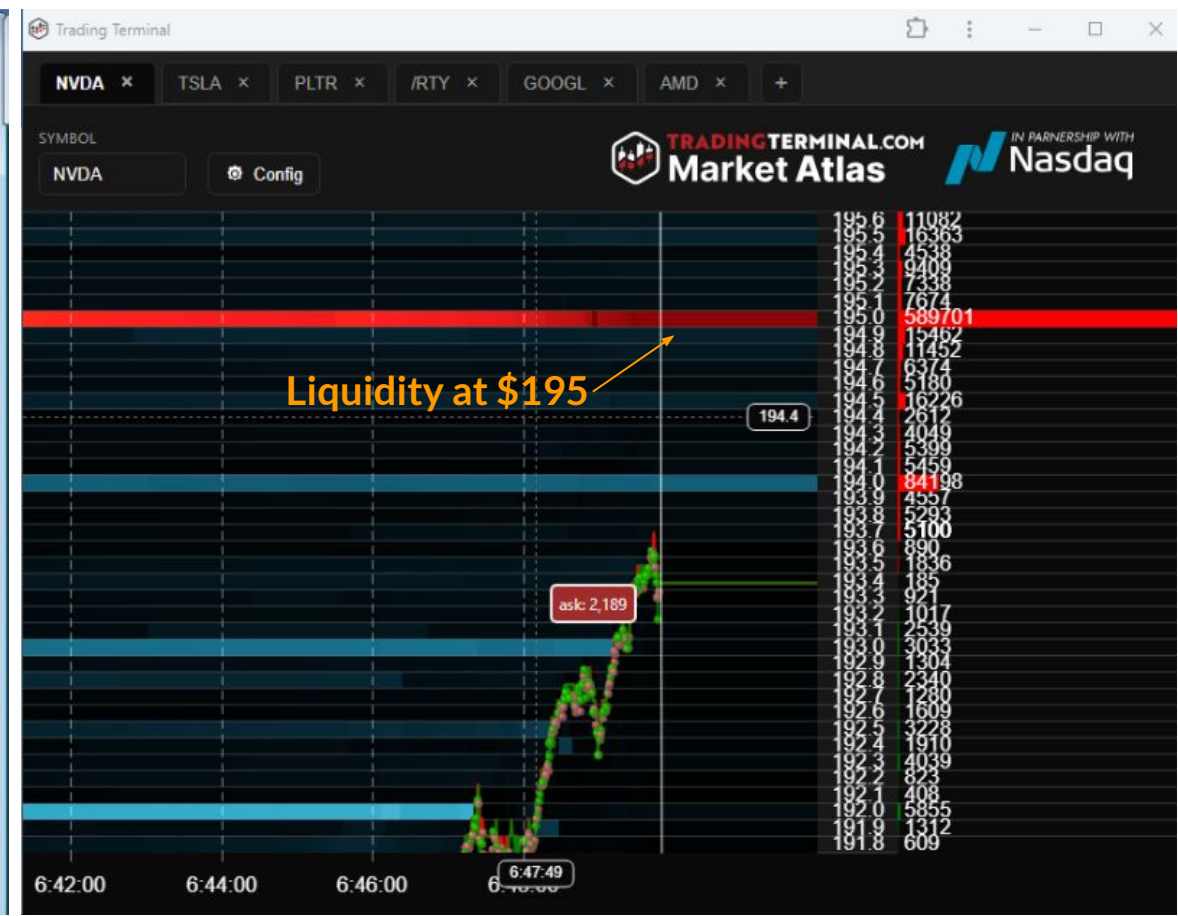
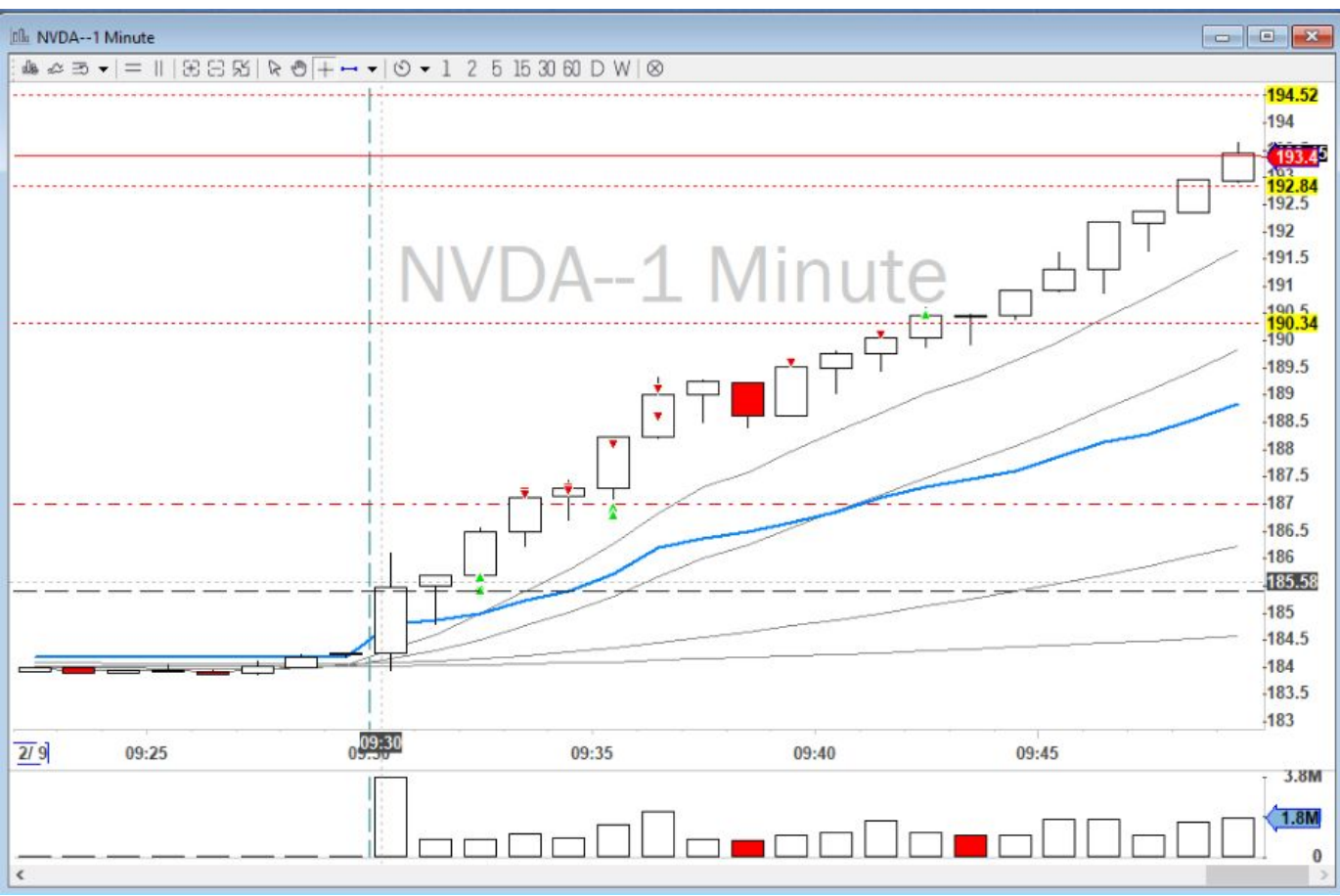
02/09/26 09:48:15

NVDA	192.76	192.78	NVIDIA C...		
NVDA	↑ 192.77	183.93	PCL 185.41	Q	
Last	192.7601	7.35 (4%)	Vol	37,526,155	
Lvl	192.76	192.78	VWAP	188.09	S
MMID	BID	SIZE	MMID	ASK	SIZE
BATS	192.76	1	ACB	192.78	4
NSDQ	192.76	0	ARCA	192.78	4
ACB	192.76	0	NSDQ	192.78	3
NSDQ	192.75	3	NASD	192.78	3
IEX	192.75	3	BATS	192.79	4
NASD	192.75	3	NSDQ	192.79	2
ARCA	192.75	2	MEMX	192.79	2
MIAX	192.75	1	ACB	192.79	1
NYSE	192.75	1	EDGX	192.79	1
24X	192.75	1	NYSE	192.79	1
ACB	192.75	0	ACB	192.80	2
ACB	192.74	3	MIAX	192.80	2
EDGX	192.74	2	NSDQ	192.81	1
NSDQ	192.74	1	ACB	192.81	1
ACB	192.73	2	NSDQ	192.82	4
NSDQ	192.73	1	ACB	192.82	3
ACB	192.72	6	CHX	192.82	1
NSDQ	192.72	2	PSX	192.83	25
MEMX	192.72	1	NSDQ	192.83	0
CHX	192.40	6	IEX	192.88	1
EDGA	191.00	1	BYX	192.95	3
BYX	190.76	1	EDGA	192.95	3
AMEX	190.76	1	AMEX	192.95	2
NSX	190.00	5	NSX	193.10	2
NORX	189.50	3	NORX	193.78	1



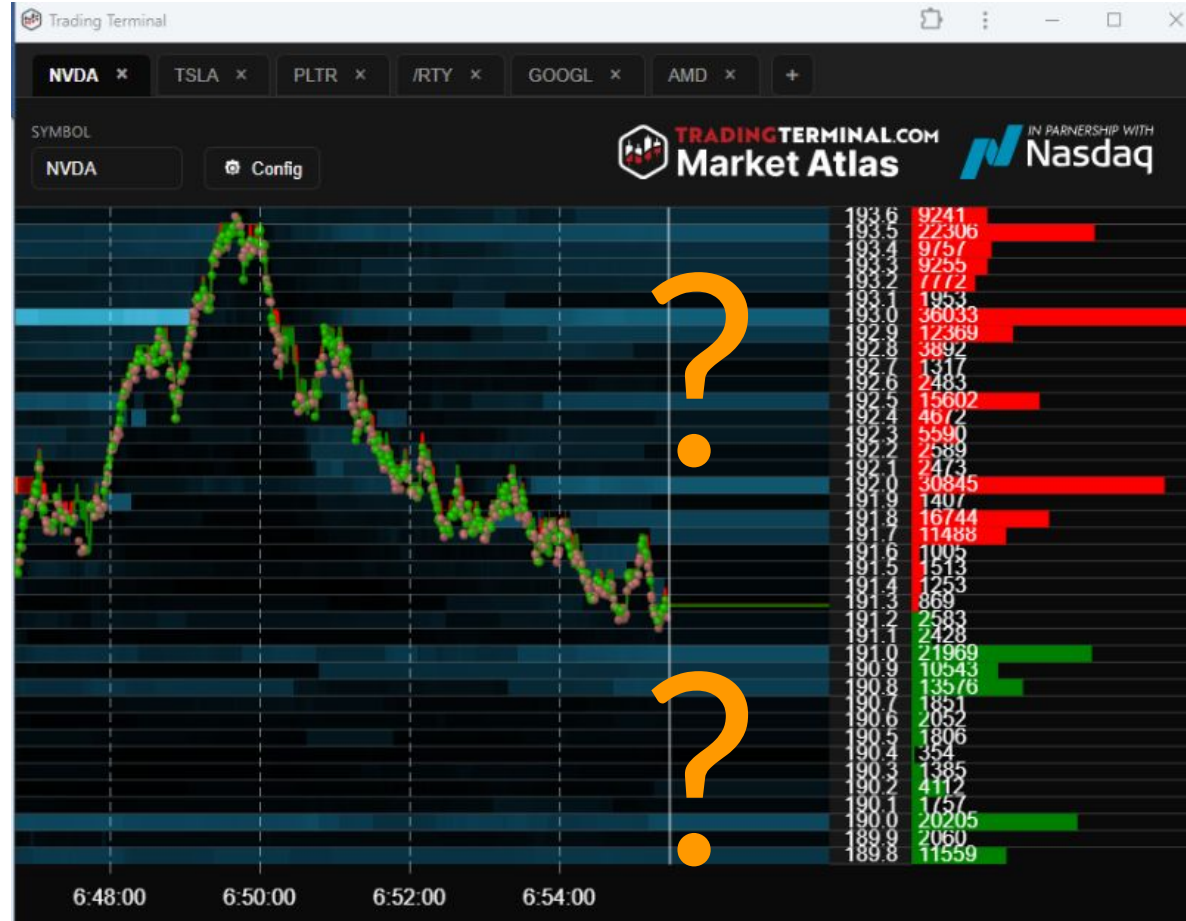
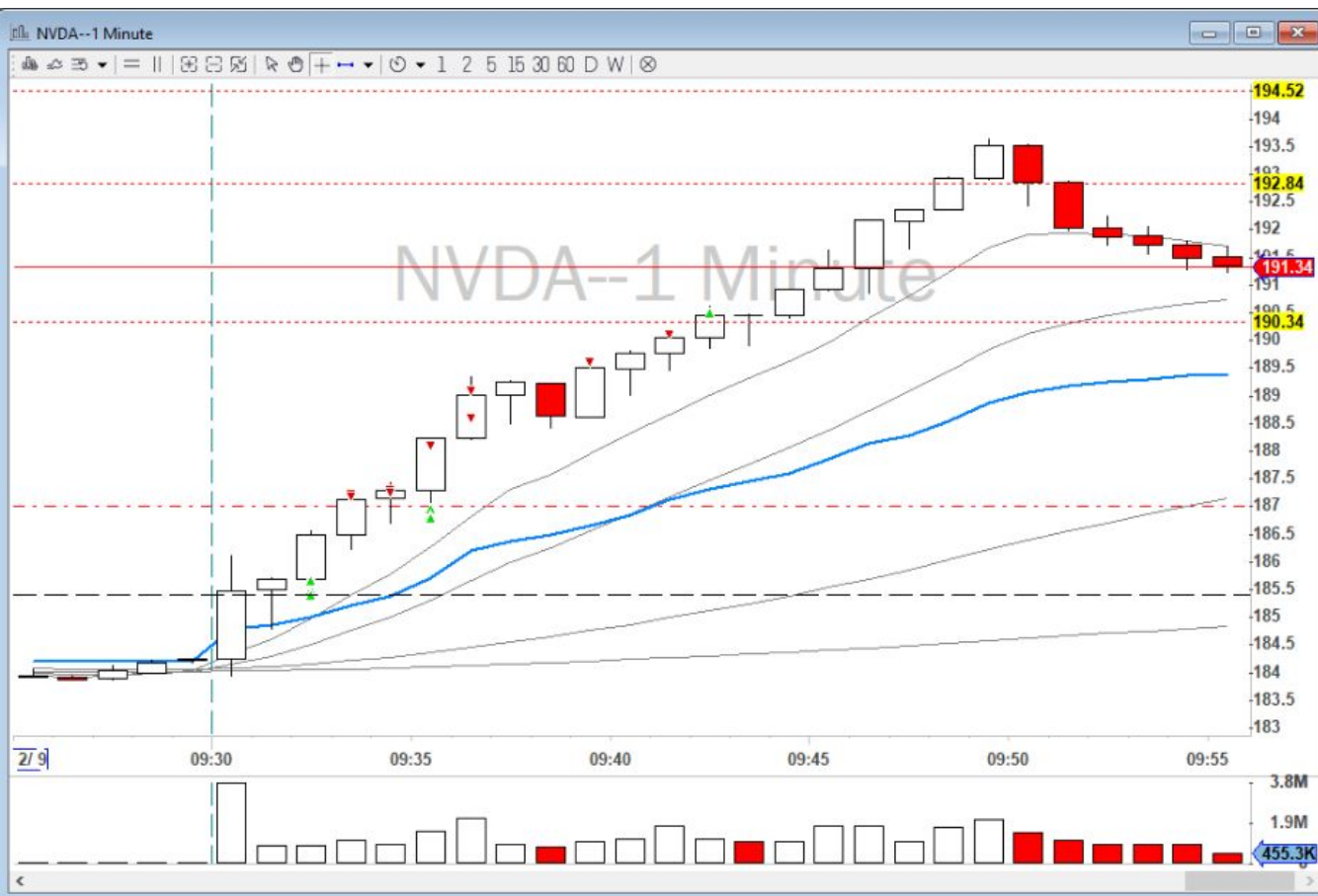
02/09/26 09:49:49

NVDA	193.37 -- 193.39	NVIDIA C...		
NVDA	↓ 193.66 - 183.93	PCL 185.41	Q	
Last	193.3888	7.979 (4.3%)	Vol 41,268,166	↓
Lv1	193.37	193.4	VWAP: 188.54	S



02/09/26 09:55:27

NVDA	191.34	--	191.36	NVIDIA C...			
NVDA	↑	193.66	-	183.93	PCL	185.41	Q
Last	191.34	5.93	(3.2%)	Vol	49,012,678		↑
Lv1	191.34	191.35		VWAP	189.11		S



With the help of Market Atlas or depth of market we can make meaningful, consistent trades.

Symb	Accour	Realized	Type	Company Nam
NVDA	U15883	14959.46	Margin	NVIDIA Corporat
NVDL	U15883	8193.08	Margin	GraniteShares 2:
SGOV	U25233	0.00	Margin	iShares 0-3 Mon
TLT	U40790	0.00	Margin	iShares 20+ Yea
VOO	U40790	0.00	Margin	Vanguard S&P 5
Summary		23152.54		

- 4% move on TSLA
- 8% move on TSL (x2 leveraged ETF for NVDA daily move)
- +20% move on TSLA options

 **Glenn D** ☆ 07:20 AM
@Andrew Thanks for Atlas...help me hold longer than I usually would and nailed an extra R on two trades...I love this tool.\

Using Market Atlas for Day Trading Systems

Example 3

NVDA, February 11, 2026, 9:42 AM EST



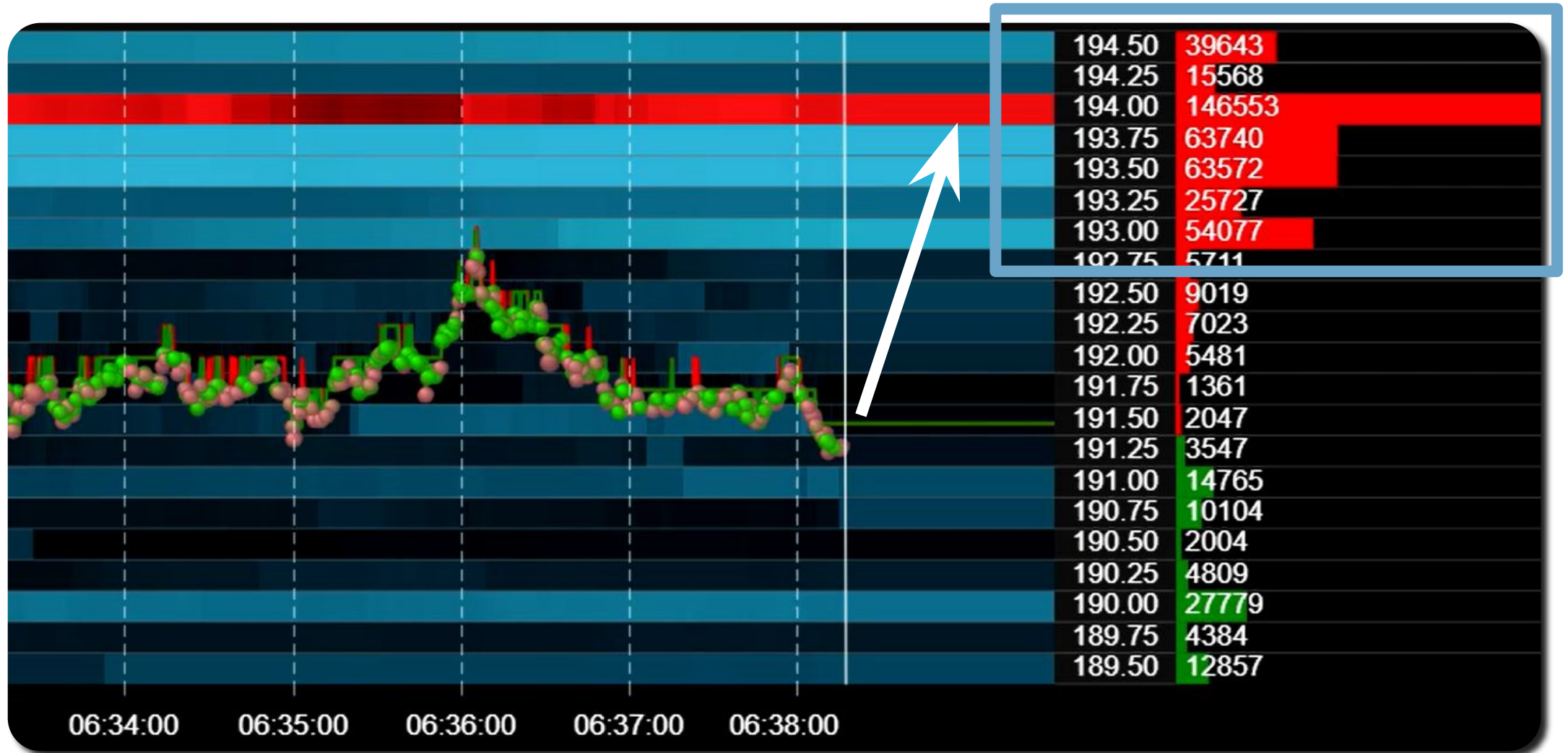
Can you tell *where* price is heading?

- a. Reverse Up
- b. Consolidate sideways
- c. Dip lower

What if you can actually see the *market liquidity*?



What if you can actually see the *market liquidity*?



NVDA, February 11, 2026, 9:46 AM EST



Price was drawn toward the *obvious liquidity*.

- a. Reverse Up
- b. Consolidate sideways
- c. Dip lower

Key Lessons:

- How *liquidity visualization* improves execution
- How to gain real trading edge using *market liquidity theory*

My Personal **Live Trading** Examples using Market Atlas

1. Red-to-Green: Obvious Liquidity at Previous Day's Close
2. Opening Range Breakout - Huge Ask Order at \$444
3. All-Time High Breakout - Confirmation using Liquidity at \$259




Why traders can gain an edge using Market Atlas:

1. *Ability to see real liquidity levels*
2. *Identify absorption vs. spoofing (fake-outs)*
3. *See whether liquidity is being added or pulled*
4. *Strong **conviction** based on order flow & market liquidity theory*

⋮ **Dash2590** ☆ 07:11 AM
Just used Atlas for the first time and easily covered the monthly subscription fees!! @Andrew Aziz Did you just hand us a cheat code to the market :-P

07:25 AM **Kenneth Reid**  ⋮
Just joined TT for Atlas... it worked beautifully on NVDA this morning. Thx Andrew!

⋮  **Glenn D** ☆ 07:20 AM
@Andrew Thanks for Atlas...help me hold longer than I usually would and nailed an extra R on two trades...I love this tool.\

⋮ **GS** ☆ 06:53 AM



Atlas is great. I am not expert but as soon as QBTS hit 32 orders on Atlas starting dropping off from top side... I took all off rather than waiting for further push.

Core Takeaway:

➤ *Level 2 data helps day traders make confident decisions.*

But visualization matters.

➤ *When reading level 2 data:*

*traders should focus on the **most significant** liquidity levels.*



CME – Chicago Mercantile Exchange

Equity index futures like ES, NQ
FX futures. Some interest rate products



CBOT – Chicago Board of Trade

Treasury futures
Agricultural products like corn, wheat, soybeans



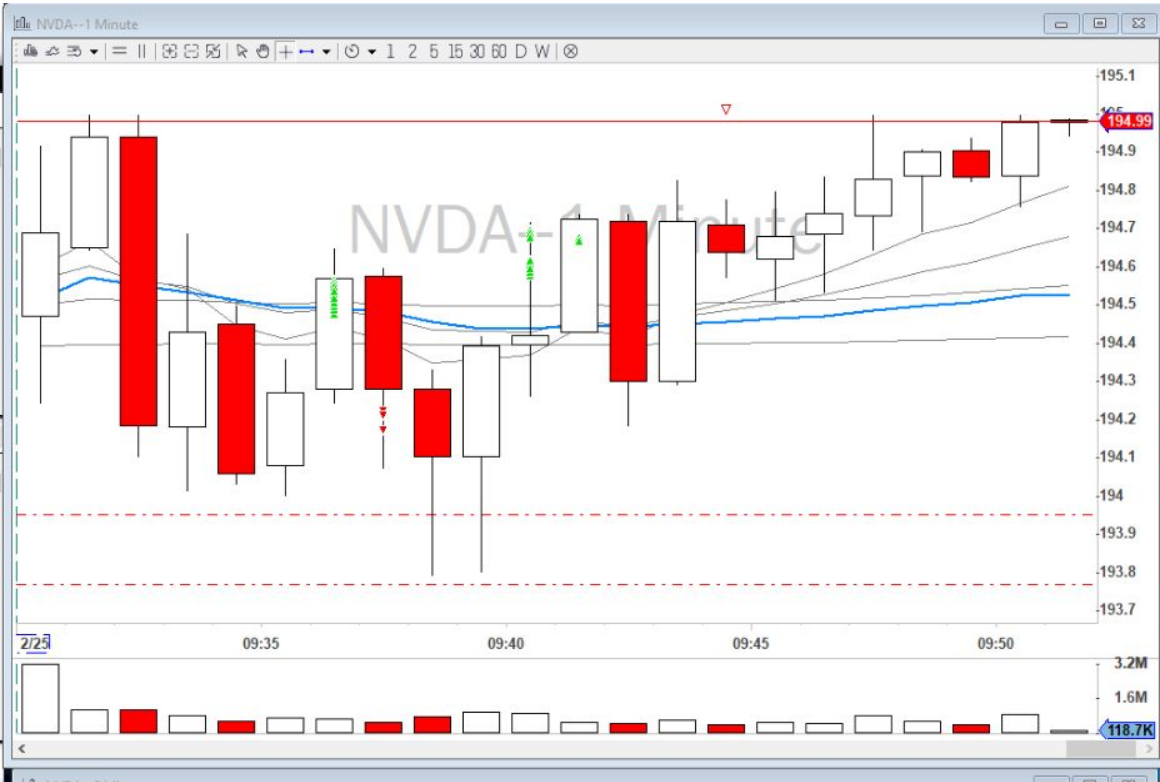
NYMEX – New York Mercantile Exchange

Energy products like crude oil, natural gas



COMEX – Commodity Exchange

Metals like gold, silver, copper



02/25/26 09:51:11

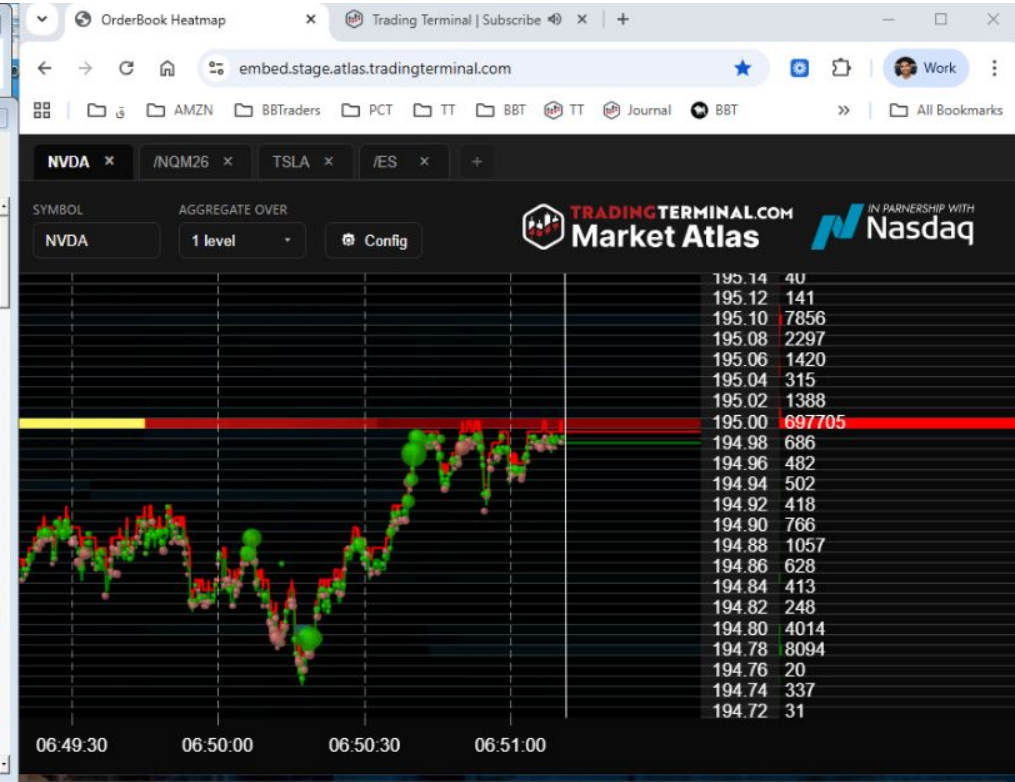
NVDA 194.98 -- 194.99 NVIDIA C... PCL 192.85

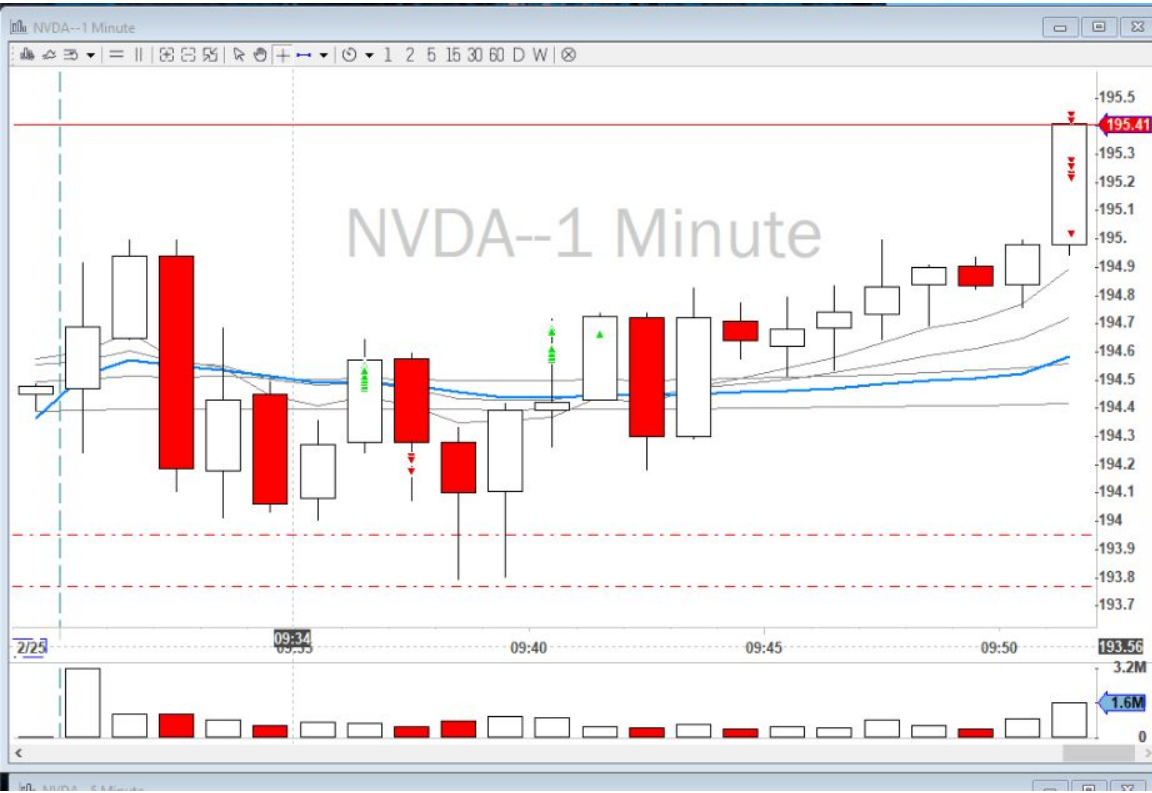
Last 194.99 2.14 (1.1%) Vol 24,898,738

Lv1 194.98 194.99 VwAP: 194.5 S

MMID	BID	SIZE	MMID	ASK	SIZE
NSDQ	194.98	6	ACB	194.99	167
NASD	194.98	6	ARCA	194.99	167
ACB	194.98	5	NASD	195.00	6979
ARCA	194.98	5	NSDQ	195.00	6959
IEX	194.98	5	ACB	195.00	1883
EDGX	194.98	2	EDGX	195.00	1857
NYSE	194.98	1	MEMX	195.00	782
BATS	194.98	1	BATS	195.00	144
MEMX	194.98	1	MIAX	195.00	46
ACB	194.97	8	NYSE	195.00	25
NSDQ	194.97	3	CHX	195.00	12
NSDQ	194.96	4	IEX	195.00	5
ACB	194.96	3	EDGA	195.00	5
NSDQ	194.95	7	PSX	195.00	5
ACB	194.95	4	NQBX	195.00	2
EDGA	194.95	2	24X	195.00	1
ACB	194.94	5	BYX	195.00	1
NSDQ	194.94	5	ACB	195.01	29
MIAX	194.94	1	NSDQ	195.01	29
CHX	194.80	4	ACB	195.02	19
PSX	194.00	8	NSDQ	195.02	13
BYX	192.98	1	NSDQ	195.03	5
AMEX	192.00	1	ACB	195.03	3
NQBX	188.00	1	NSDQ	195.04	3
NSX	184.72	1	NSX	195.32	2

Montage \INET\ARCA\





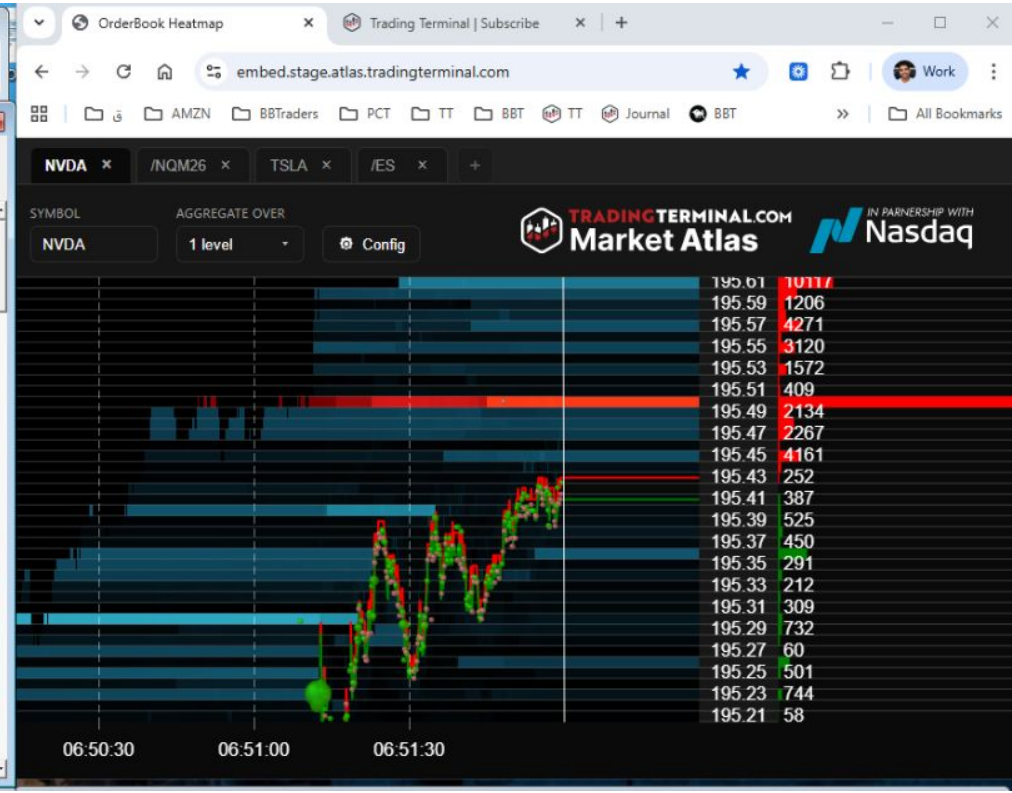
02/25/26 09:52:00

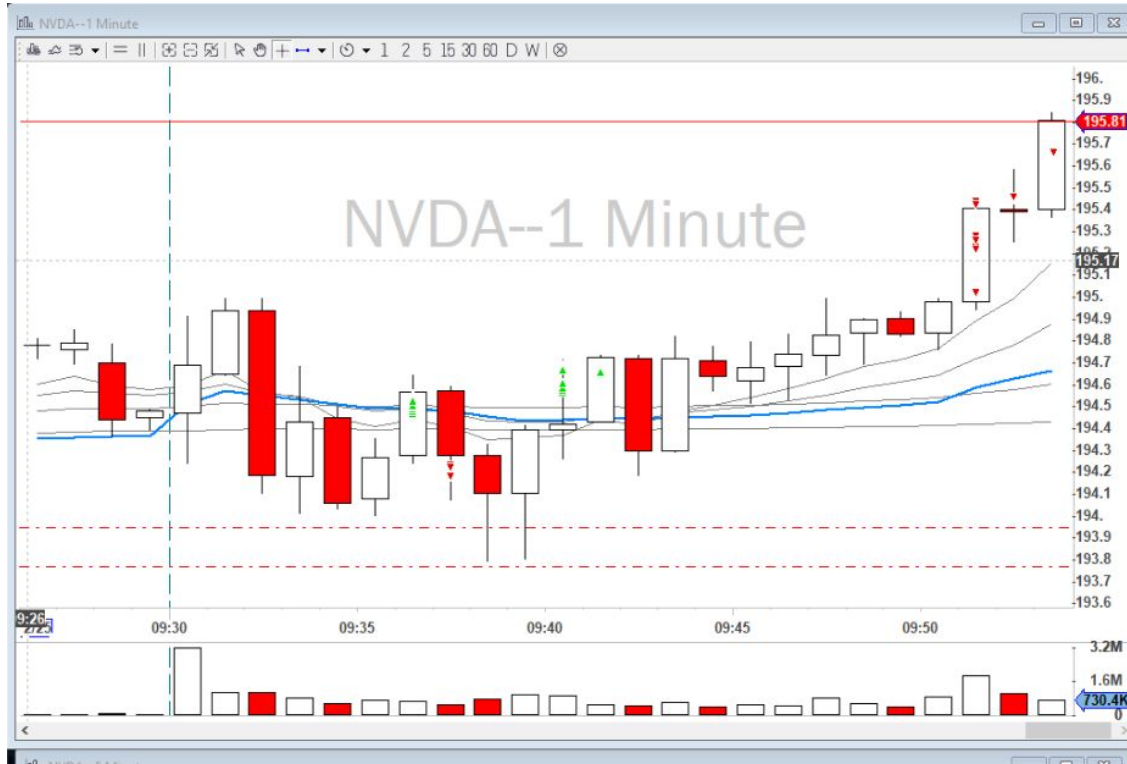
NVDA 195.41 -- 195.43 NVIDIA C...

Last [195.42] [2.57] [1.3%] Vol [26,675,030] PCL [192.85] Q
Lv1 [195.41] [195.43] VwAP: 194.55 S

MMID	BID	SIZE	MMID	ASK	SIZE
NSDQ	195.41 4		ACB	195.42 0	
NASD	195.41 4		ACB	195.43 3	
IEX	195.41 2		ARCA	195.43 3	
EDGX	195.41 2		NSDQ	195.43 2	
ACB	195.41 1		NASD	195.43 2	
NYSE	195.41 1		BATS	195.43 1	
ARCA	195.41 1		NYSE	195.43 1	
BATS	195.41 1		IEX	195.43 1	
ACB	195.40 6		EDGX	195.44 17	
NSDQ	195.40 4		NSDQ	195.44 5	
MEMX	195.40 3		ACB	195.44 3	
NSDQ	195.39 5		NSDQ	195.45 41	
ACB	195.39 2		ACB	195.45 16	
NSDQ	195.38 8		MEMX	195.45 2	
ACB	195.38 2		ACB	195.46 32	
NSDQ	195.37 4		NSDQ	195.46 3	
ACB	195.37 2		NSDQ	195.47 22	
MIAX	195.32 1		EDGA	195.48 1	
CHX	195.20 4		BYX	195.50 10	
BYX	195.18 1		NSX	195.50 4	
EDGA	194.95 1		NQBX	195.50 2	
PSX	194.00 8		PSX	195.50 1	
AMEX	192.00 1		CHX	195.60 4	
NQBX	188.00 1		MIAX	195.66 9	
NSX	184.72 1		AMEX	196.00 1	

Montage \INET\ARCA





02/25/26 09:53:55

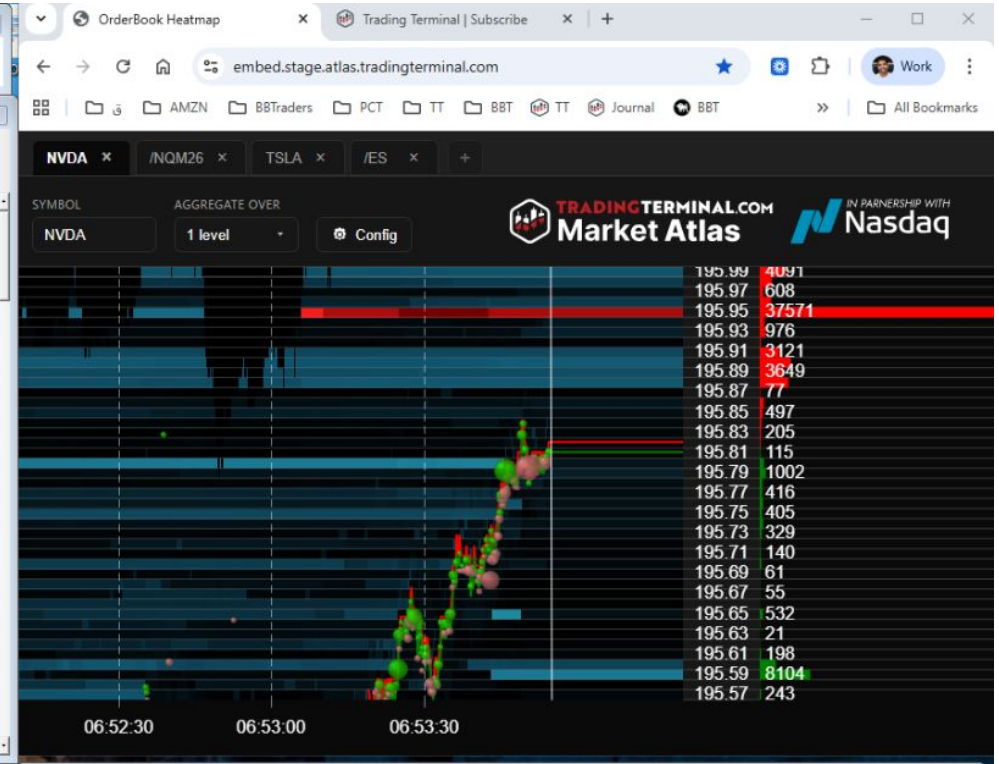
NVDA 195.81 -- 195.83 NVIDIA C...

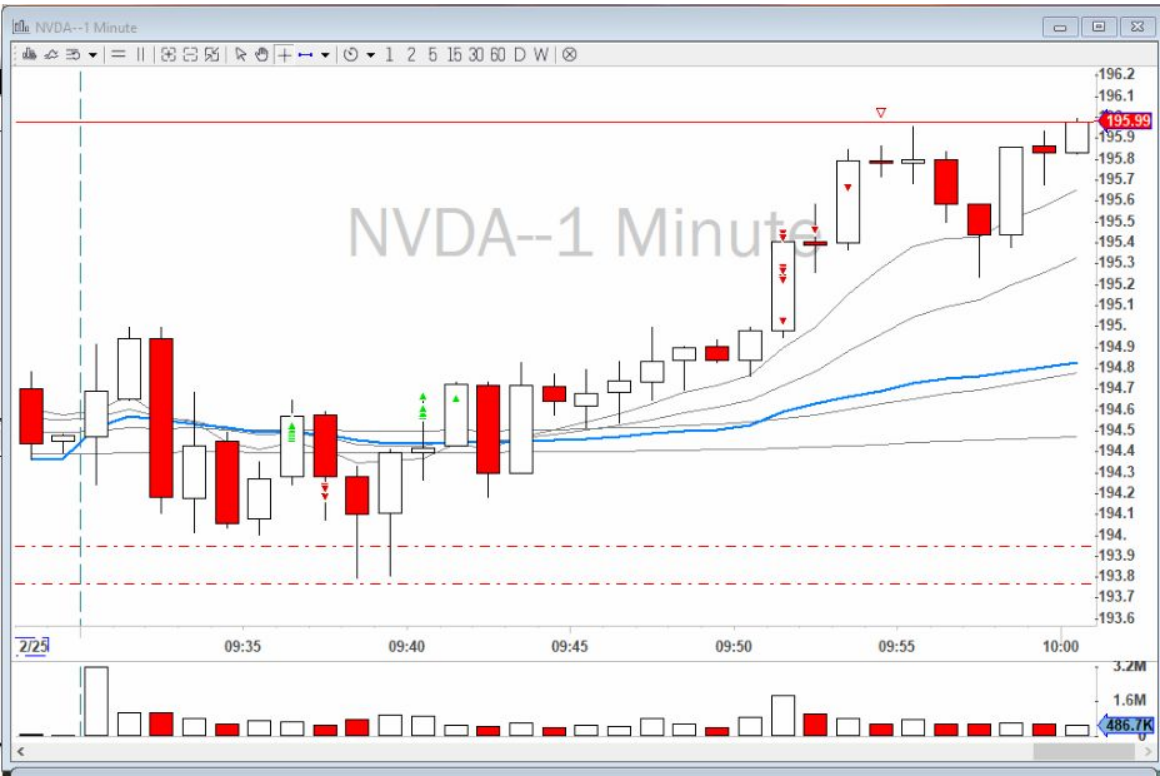
Last 195.81 2.96 (1.5%) Vol 28,892,769 PCL 192.85

Lvl 195.81 195.82 VWAP: 194.62 S

MMID	BID	SIZE	MMID	ASK	SIZE
NSDQ	195.81	10	IEX	195.83	2
NASD	195.81	10	ACB	195.83	2
ACB	195.81	2	NSDQ	195.83	1
IEX	195.81	2	NASD	195.83	1
EDGX	195.81	2	ARCA	195.83	1
NYSE	195.81	1	NYSE	195.83	1
ARCA	195.81	1	ACB	195.84	3
NSDQ	195.80	13	EDGX	195.84	3
ACB	195.80	9	NSDQ	195.84	2
MEMX	195.80	2	MEMX	195.84	2
BATS	195.80	1	BATS	195.84	1
NSDQ	195.79	9	NSDQ	195.85	16
ACB	195.79	3	ACB	195.85	3
ACB	195.78	8	ACB	195.86	33
NSDQ	195.78	4	NSDQ	195.86	6
NSDQ	195.77	4	ACB	195.87	2
ACB	195.77	3	NSDQ	195.87	0
MIAx	195.64	5	BYX	195.90	6
CHX	195.60	4	MIAx	195.99	2
EDGA	195.21	1	NQBx	196.00	19
PSX	194.00	8	NSX	196.00	2
AMEX	192.00	1	EDGA	196.00	1
NQBx	188.00	1	PSX	196.16	1
NSX	184.72	1	CHX	196.20	4
			AMEX	196.00	1

Montage \INET\ARCA





02/25/26 10:00:24

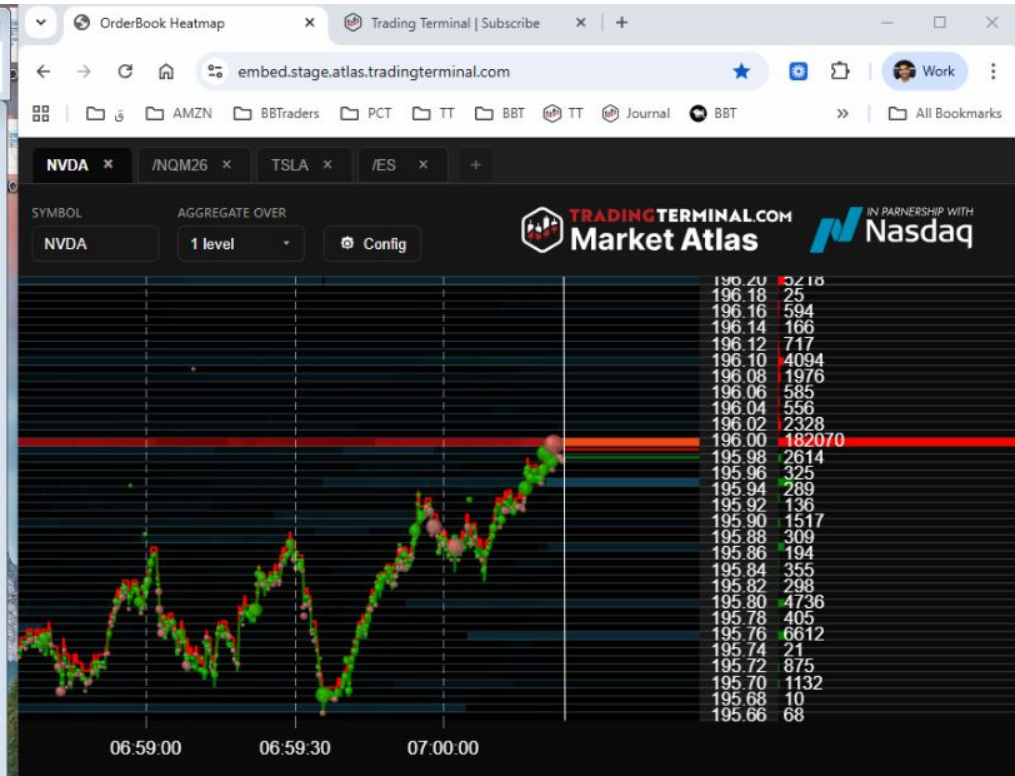
NVDA 195.98 -- 195.99 NVIDIA ... PCL 192.85 Q

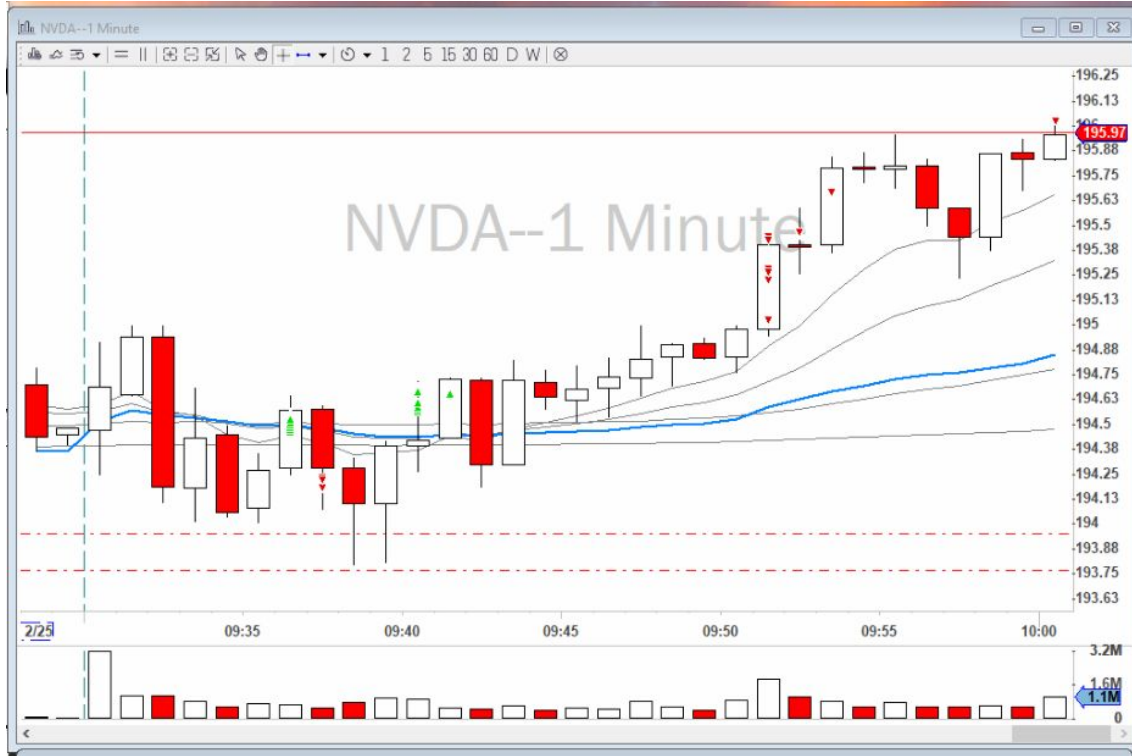
Last 195.9801 3.13 (1.6%) Vol 34,031,099

Lv1 195.98 195.99 VwAP: 194.79 S

MMID	BID	SIZE	MMID	ASK	SIZE
NASD	195.98	36	ARCA	195.99	112
NSDQ	195.98	35	ACB	195.99	111
ACB	195.98	33	NASD	196.00	1820
ARCA	195.98	32	NSDQ	196.00	1815
BATS	195.98	26	EDGX	196.00	897
EDGX	195.98	25	ACB	196.00	602
IEX	195.98	5	MEMX	196.00	153
MEMX	195.98	2	BATS	196.00	69
NYSE	195.98	1	MIAX	196.00	32
NSDQ	195.97	1	IEX	196.00	16
ACB	195.97	0	NQBX	196.00	12
ACB	195.96	5	NYSE	196.00	3
NSDQ	195.96	3	BYX	196.00	2
NSDQ	195.95	116	EDGA	196.00	1
ACB	195.95	3	NSDQ	196.01	4
ACB	195.94	3	ACB	196.01	2
NSDQ	195.94	2	NSDQ	196.02	11
CHX	195.80	4	ACB	196.02	1
MIAX	195.70	10	ACB	196.03	24
EDGA	195.48	1	NSDQ	196.03	11
BYX	195.18	1	NSDQ	196.04	5
PSX	194.00	8	CHX	196.20	4
NQBX	192.91	1	NSX	196.32	2
AMEX	192.00	1	PSX	196.32	2
NSX	184.72	1	AMEX	196.00	1

Montage \INET\ARCA\





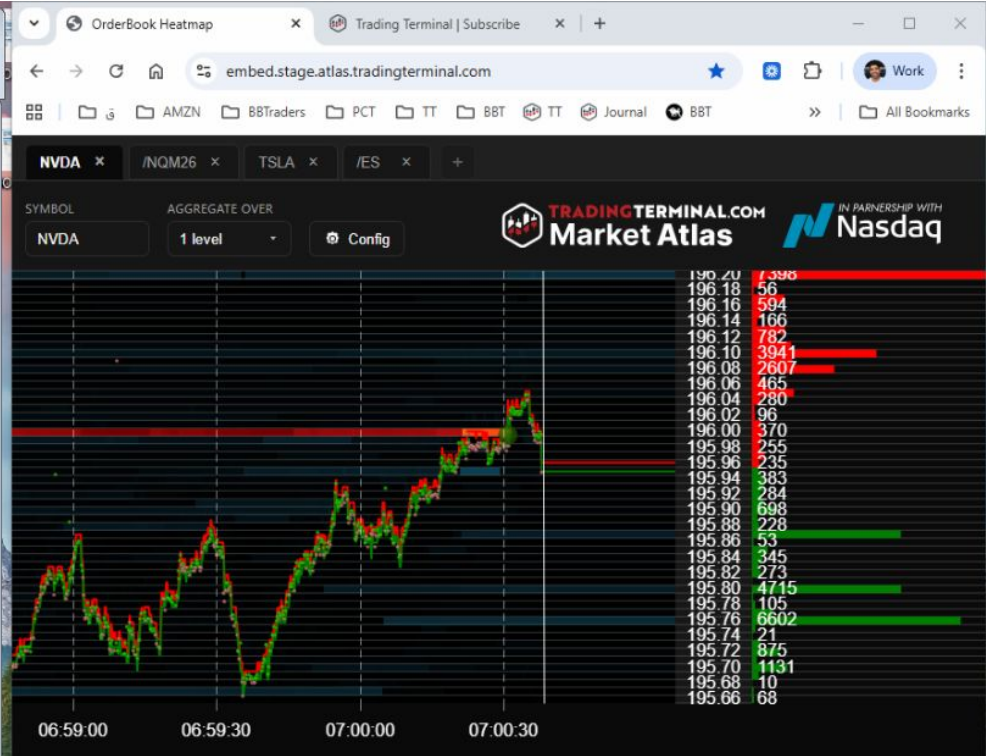
02/25/26 10:00:38

NVDA 195.93 -- 195.94 NVIDIA ...

NVDA ↓ 196.05 - 193.79 PCL 192.85 Q
Last 195.94 3.09 (1.6%) Vol 34,684,785
Lv1 195.93 195.94 VWAP: 194.81 S

MMID	BID	SIZE	MMID	ASK	SIZE
ARCA	195.93	5	NSDQ	195.94	5
ACB	195.93	4	ACB	195.94	3
NASD	195.93	2	EDGX	195.94	2
IEX	195.93	3	ARCA	195.94	2
NSDQ	195.93	3	BATS	195.94	2
MEMX	195.92	5	NYSE	195.94	1
ACB	195.92	2	NASD	195.94	1
NSDQ	195.92	2	ACB	195.95	3
EDGX	195.92	2	NSDQ	195.95	2
NSDQ	195.91	2	MEMX	195.95	1
ACB	195.91	1	ACB	195.96	13
NSDQ	195.90	6	NSDQ	195.96	2
ACB	195.90	4	NSDQ	195.97	3
BATS	195.90	1	ACB	195.97	2
ACB	195.89	2	ACB	195.98	3
NSDQ	195.89	1	NSDQ	195.98	2
NYSE	195.89	1	MIAX	196.10	5
MIAX	195.70	10	EDGA	196.19	1
CHX	195.60	4	IEX	196.20	4
EDGA	195.48	1	CHX	196.20	4
BYX	195.18	1	PSX	196.27	2
PSX	194.00	8	NSX	196.27	2
NQBX	192.91	1	BYX	197.00	3
AMEX	192.00	1	NQBX	198.00	1
NSX	194.72	1	AMEX	197.00	11

Montage\INET\ARCA





Thank you

-
- Stay in Touch
- Andrew Aziz

X, Instagram, LinkedIn (@BearBullTraders)

- andrew@bearbulltraders.com

Extras

TSLA, February 11, 2026, 9:29 AM EST (Pre-Market)



One more
guess...

TSLA, February 11, 2026, 9:29 AM EST (Pre-Market)



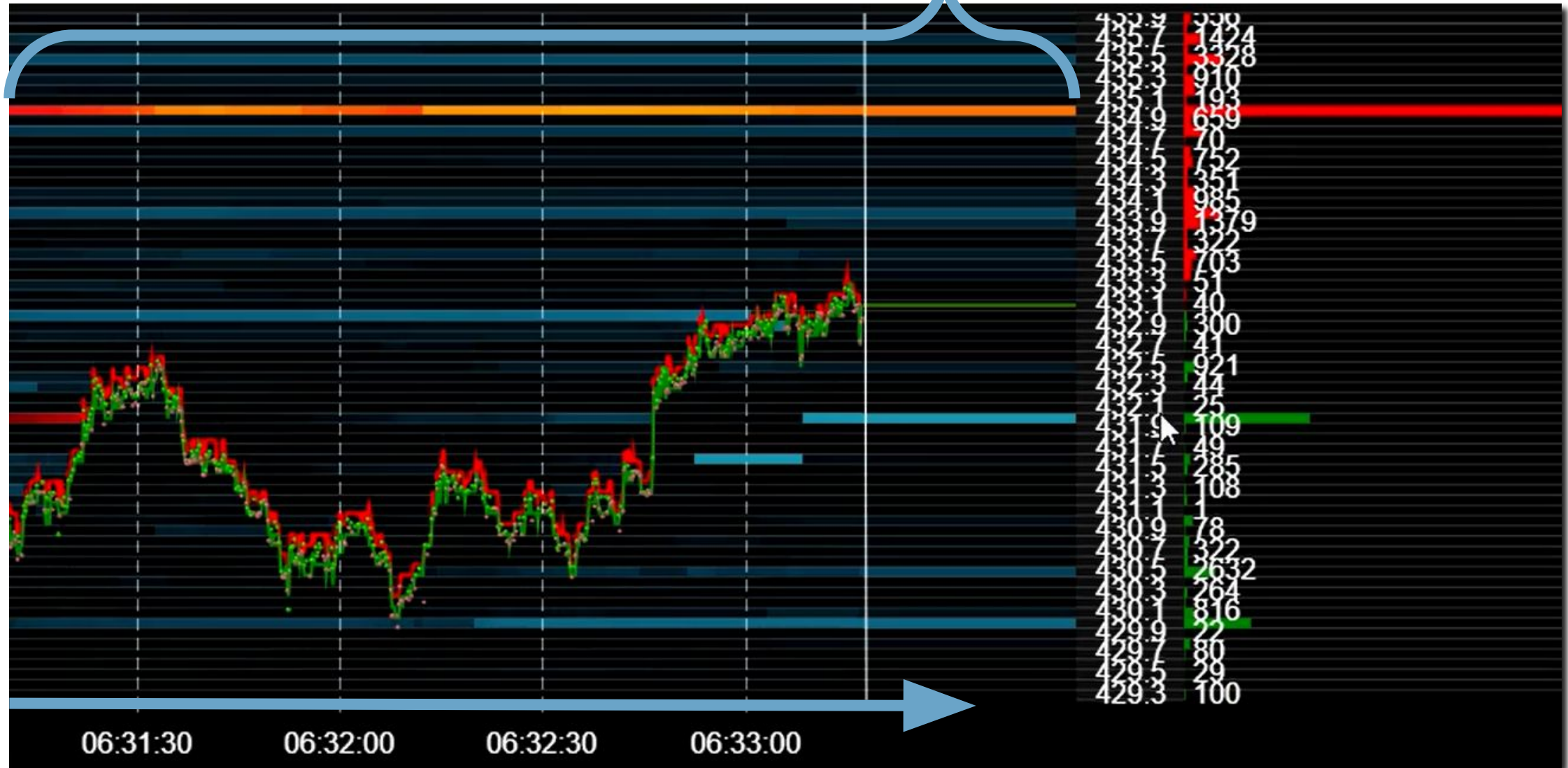
Where will price head toward after the open?

- a. Break out higher
- b. Chop sideways
- c. Break down lower

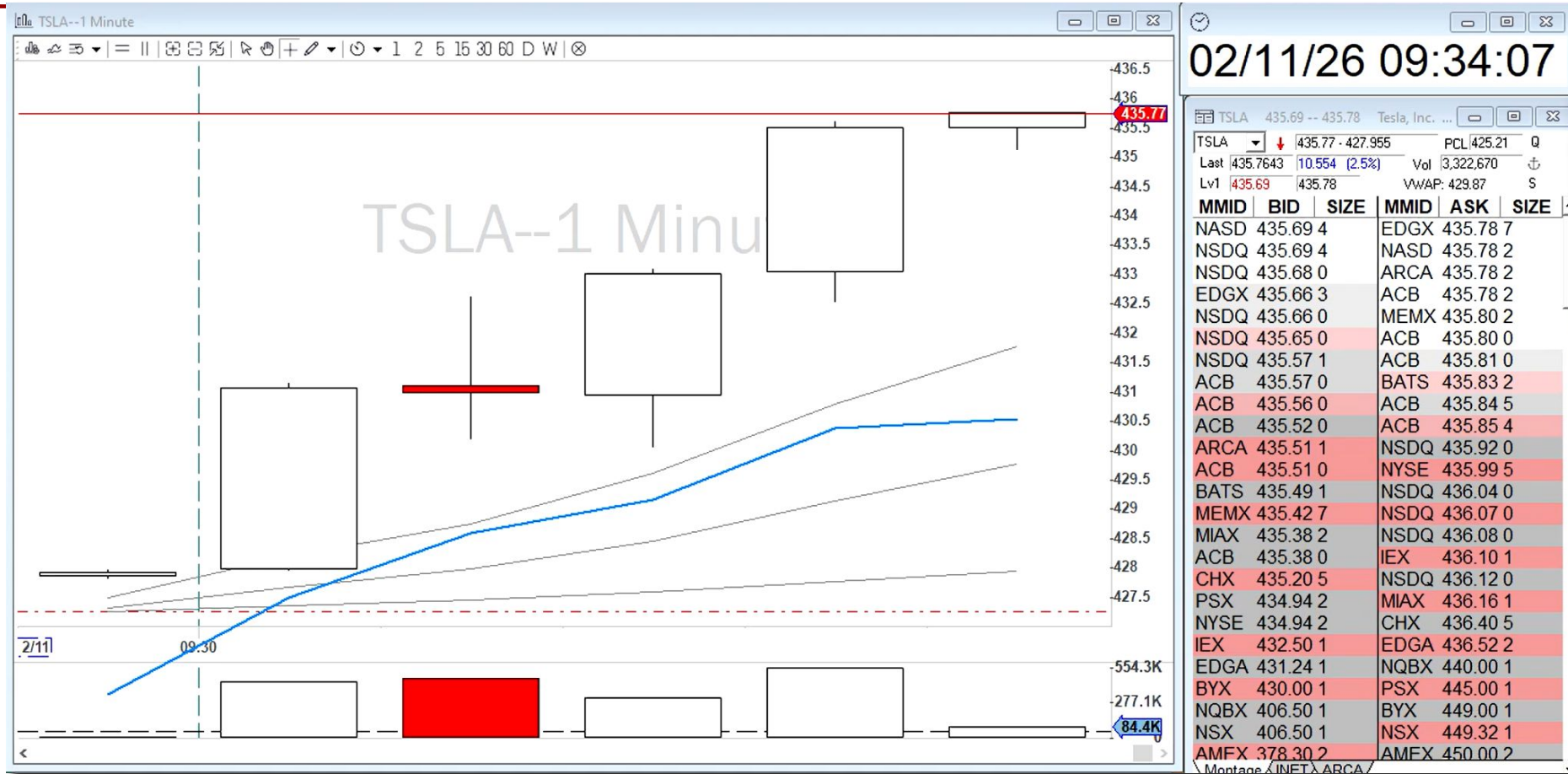
Since pre-market, Market Atlas was showing *obvious liquidity level at \$435.*



We can see that this liquidity level actually stayed over time.



TSLA, February 11, 2026, 9:34 AM EST



Answer: Price **broke out higher** from **\$428 to \$435.90** after open.



13 : 39 : 14 ET

Feb 18, 2026

Search Symbol

1m 2m 5m 15m 30m 1H 4H 1D 1W 1M Studies Grid



FUNDED TRAINING

SIMULATOR

\$250,000 Equity

1,000,000 Buying Power

\$0.00 Unrealized P/L

\$0.00 Realized P/L

Reset Account

Level 1 Bid 608.37 Ask 608.38

PDC 601.3 Shortable

Account TTDT2421 Ticker QQQ

Market 100 P Price 608.37

BUY

SELL / SHORT

HOTKEYS

Buy Max >>

Sell Max >>

Partial 10% >>

Fixed Risk 1

Alerts

Stop Loss B/E

PANIC / Close All Positions

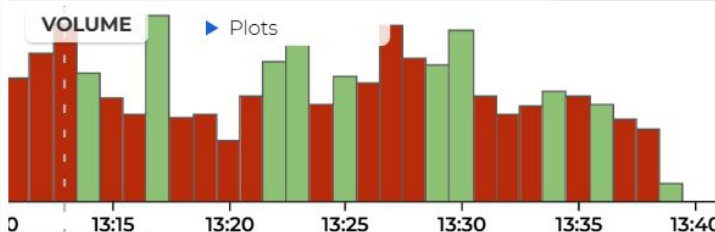
Large Cap + Add ticker

Ticker	Price	Change %
AMZN	\$205.69	2.26%
MSFT	\$401.25	1.11%
AAPL	\$265.44	0.59%
TSLA	\$413.80	0.77%

TSLA 1m



TRADING TERMINAL



Positions

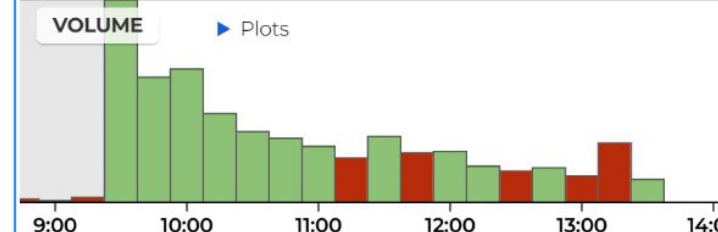
TICKER	SIDE	PRICE	QUANTITY	UNREALIZED P/L	ACTION
--------	------	-------	----------	----------------	--------

Price	Size
416.00	
413.80	300
413.82	300
413.82	200
415.50	
413.82	240
413.79	200
413.82	100
415.25	
413.82	200
415.00	
413.79	340
413.80	25
413.80	1
414.75	
413.81	100
414.50	
413.80	40
414.25	
413.79	10
413.81	35
414.00	
413.80	1
413.80	50
413.81	20
413.80	7
413.80	4
413.50	
413.80	50
413.80	36
413.25	
413.80	64
413.80	1
413.80	50
413.80	248
413.75	10
413.77	20
413.76	140

QQQ 15m



TRADING TERMINAL



Open Orders

History

TICKER	SIDE	TYPE	PRICE	QUANTITY	ACTION
--------	------	------	-------	----------	--------

Price	Size
609.00	
608.38	1
608.37	1
608.37	200
608.00	
608.38	100
608.37	46
608.37	38
607.00	
608.37	30
608.36	1
606.00	
608.36	16
608.37	40
605.00	
608.36	80
608.36	16
608.36	6
604.00	
608.36	2
608.36	120
603.00	
608.35	1
608.36	40
608.37	356
602.00	
608.37	48
608.38	1
608.37	37
601.00	
608.36	40
6.00m	
608.36	120
5.00m	
608.35	1
4.00m	
608.34	16
3.00m	
608.34	8
2.00m	
608.34	1
608.34	15
746k	

Let's watch the price action and order flow in real-time.



1 minute chart

Market Atlas

→ [VIDEO] TSLA Live Price Action Playback with Market Atlas



Hi, Andrew

Dashboard

Backtesting

Configs

Settings

Help

Trading terminal



+ Add Window



2/18/26 13:44:03

ers UP (Pre) | 02-18 01:43

Symbol	Change from...	Daily volume	Price (\$)	daily ATR(1...	Float
NSE	200.11 %	10.48 M	27.94	0.64 \$	0.86M
MLEC	50.77 %	6.56 M	14.27	1.47 \$	0.52M
BRX	31.29 %	51.27 M	7.90	0.68 \$	107.06M
YMC	27.86 %	4.43 M	43.01	6.07 \$	44.42M
IFB	24.16 %	776,196	21.12	5.42 \$	1.49M
JET	23.31 %	6.59 M	8.80	1.01 \$	13.66M
ET	19.83 %	1.05 M	33.96	1.19 \$	19.83M
EC	15.84 %	5.38 M	81.33	2.54 \$	198.44M
EC	15.84 %	1.07 M	6.63	0.52 \$	54.46M

[TT] Turbo BreakUp

Time	Symbol	Change from...	Daily volume	Price (\$)	daily ATR...	Float
13:43:15	NOG	4.54 %	718,019	26.69	1.14 \$	94.16M
13:42:54	ODFL	0.65 %	539,045	194.73	8.23 \$	191.51M
13:42:42	NOG	4.50 %	701,295	26.68	1.14 \$	94.16M
13:42:43	ODFL	0.60 %	538,852	194.64	8.23 \$	191.51M
13:41:53	HLF	4.42 %	1.98 M	16.66	0.59 \$	100.39M
13:41:50	HLF	4.17 %	1.98 M	16.61	0.59 \$	100.39M
13:41:50	SOFI	2.59 %	33.13 M	20.01	1.40 \$	1.24B
13:40:29	RDY	-0.14 %	781,922	14.40	0.27 \$	832.36M

[TT] High Volume Tre | 02-18 01:43

Time	Symbol	Change...	Daily v...	Price ...	daily AT...	Fl
13:43:54	IBRX	31.29 %	51.27 M	7.90	0.68 \$	107.06M
13:43:50	PANW	-5.97 %	18.64 M	153.94	7.82 \$	690.72M
13:43:51	SEDG	-6.10 %	6.97 M	34.92	2.97 \$	58.32M
13:43:25	GPN	16.58 %	5.38 M	81.33	2.54 \$	198.44M
13:43:21	HRL	4.20 %	4.28 M	24.43	0.63 \$	290.55M
13:43:51	HALO	-9.72 %	3.43 M	72.72	2.64 \$	116.21M
13:43:41	ESI	7.50 %	3.30 M	34.69	1.37 \$	225.51M
13:43:47	CWK	7.66 %	2.68 M	13.28	1.00 \$	230.33M
13:43:51	CNK	3.83 %	2.68 M	26.30	0.88 \$	99.03M
13:43:20	HLF	4.39 %	1.98 M	16.65	0.59 \$	100.39M
13:43:35	COGT	-0.45 %	1.80 M	37.46	1.85 \$	116.69M
13:43:27	GRMN	9.48 %	1.71 M	237.74	6.21 \$	163.46M
13:43:20	RBA	3.44 %	1.59 M	107.66	3.78 \$	185.48M
13:43:30	EYPT	-6.15 %	1.52 M	14.00	1.12 \$	73.31M

ers DOWN | 02-18 01:43

Symbol	Change from...	Daily volume	Price (\$)	daily ATR(1...	Float
CLS	-16.45 %	3.53 M	82.37	5.31 \$	30.83M
ECO	-13.92 %	2.44 M	29.56	1.79 \$	58.79M
CBDO	-12.02 %	575,351	16.54	0.75 \$	12.36M
NET	-11.25 %	12.20 M	12.19	0.97 \$	253.49M
INO	-11.21 %	7.91 M	51.38	1.83 \$	170.40M
RE	-10.21 %	240,841	19.57	1.78 \$	10.71M
EO	-9.92 %	1.37 M	10.30	0.61 \$	22.45M
PS	-9.82 %	309,857	39.38	2.64 \$	15.84M
ALO	-9.72 %	3.43 M	72.72	2.64 \$	116.21M
ISNA	-9.30 %	103,124	18.73	0.74 \$	9.56M
ACY	-9.06 %	686,632	87.51	2.93 \$	26.57M
OCO	-9.00 %	1.46 M	51.39	2.74 \$	48.62M

[TT] Volume Breakou

Time	Symbol	Change from cl...	Daily ...	Price (\$)	daily AT...	Float
13:42:25	HRL	4.24 %	4.27 M	24.43	0.63 \$	290.55M
13:42:16	SEDG	-5.78 %	6.94 M	35.04	2.97 \$	58.32M
13:42:16	SEDG	-5.78 %	6.94 M	35.04	2.97 \$	58.32M
13:42:05	CRL	-2.49 %	1.32 M	154.20	9.92 \$	48.65M
13:41:50	HLF	4.17 %	1.98 M	16.61	0.59 \$	100.39M
13:41:48	OVV	4.97 %	4.44 M	48.38	1.78 \$	251.91M
13:41:19	COCO	-8.69 %	1.45 M	51.56	2.74 \$	48.62M
13:41:19	COCO	-8.69 %	1.45 M	51.56	2.74 \$	48.62M
13:41:19	GPN	16.86 %	5.36 M	81.52	2.54 \$	198.44M
13:41:13	ITRI	3.65 %	1.08 M	99.96	5.00 \$	45.17M
13:40:57	FANG	2.59 %	1.46 M	172.96	5.39 \$	182.75M
13:40:40	CBRE	7.04 %	2.53 M	151.34	8.14 \$	293.08M
13:40:37	ALGM	-7.75 %	2.50 M	38.46	2.37 \$	124.14M

[TT] BHOD/BLOD

Time	Symbol	Change from ...	Daily volume	Price
13:42:11	GPN	16.66 %	5.37 M	81.33
13:41:50	HLF	4.17 %	1.98 M	16.61
13:38:24	HLF	3.51 %	1.69 M	16.51
13:37:17	BBNX	-0.33 %	2.64 M	13.95
13:34:09	APG	-0.02 %	1.66 M	44.43
13:34:06	EYPT	-5.56 %	1.51 M	14.00
13:33:11	GPN	17.07 %	5.27 M	81.67
13:33:04	GPN	16.96 %	5.26 M	81.59

[TT] High Volume Tre | 02-18 01:43

Time	Symbol	Change from cl...	Daily volume	Price (\$)	daily ATR(14)	Float
13:43:54	IBRX	31.29 %	51.27 M	7.90	0.68 \$	107.06M
13:43:50	PANW	-5.97 %	18.64 M	153.94	7.82 \$	690.72M
13:43:51	SEDG	-6.10 %	6.97 M	34.92	2.97 \$	58.32M
13:43:25	GPN	16.58 %	5.38 M	81.33	2.54 \$	198.44M
13:43:21	HRL	4.20 %	4.28 M	24.43	0.63 \$	290.55M
13:43:51	HALO	-9.72 %	3.43 M	72.72	2.64 \$	116.21M
13:43:41	ESI	7.50 %	3.30 M	34.69	1.37 \$	225.51M
13:43:47	CWK	7.66 %	2.68 M	13.28	1.00 \$	230.33M
13:43:51	CNK	3.83 %	2.68 M	26.30	0.88 \$	99.03M

[TT] Extreme Reversa

Time	Symbol	Change...	Daily v...	Price (\$)	daily A...	Float
13:36:52	AMPX	5.53 %	2.36 M	10.31	1.44 \$	121.45M

Cookie Settings

Who Am I?



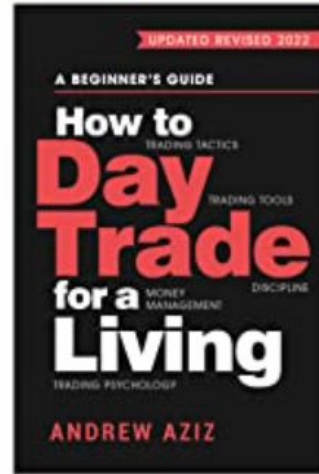
✓ Following

Follow to get new release updates and improved recommendations

About Andrew Aziz

Andrew Aziz is a Canadian trader, investor, official Forbes Business Council member, and #1 best-selling author. He has ranked as one of the top 100 authors in the "Business and Finance" category of Amazon for more than 5 consecutive years (2016-2022). His books in finance and trading have been published thus far in 10 different languages.

#1 Best Seller



How to Day Trade for a Living: A Beginner's Guide to Trading Tools and Tactics, Money Management, Discipline and Trading Psychology Jul 21, 2015

by Andrew Aziz

Kindle Edition

\$3.99

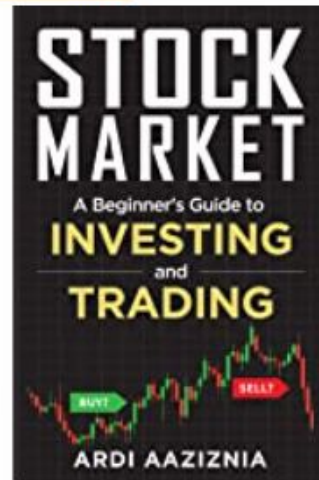
Hardcover

\$23.99

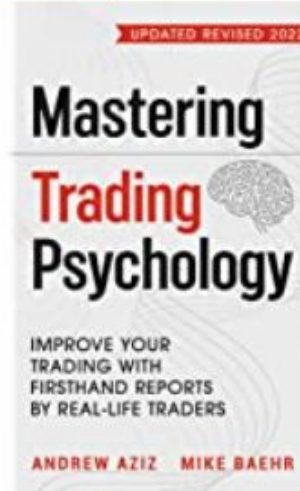
Usually ships within 12 days.

★★★★★ (13,602)

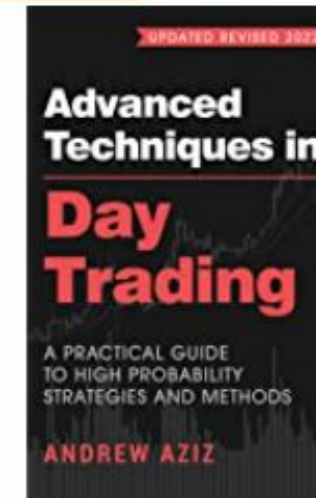
#1 Best Seller



#1 Best Seller



#1 Best Seller



@BearBullTraders

Email me: andrew@bearbulltraders.com

This PDF can be downloaded at

www.BearBullTraders.com/MoneyShow