



# The Titan Territory Strategy

## Trading Supply & Demand w/ Institutional Alignment

PRESENTED BY:

Megan Marlow

# DISCLAIMER

BearBullTraders.com employees, contractors, shareholders and affiliates, are **NOT an investment advisory service, a registered investment advisor or a broker-dealer** and does not undertake to advise clients on which securities they should buy or sell for themselves.

You understand that **NO content published as part of the Bear Bull Trading Room and its Website constitutes a recommendation** that any particular investment, security, portfolio of securities, transaction or investment strategy is suitable for any specific person.

You further understand that **none of the creators or providers of our Services or their affiliates will advise you personally** concerning the nature, potential, value or suitability of any particular investment, security, portfolio of securities, transaction, investment strategy or other matter.

# Overview

---

- Introduction to the Titan Territory Strategy (TTS)
- Stock Selection Criteria
- Titan Territory Levels (Bigger Picture View)
- 5-Min Trend (Intraday View)
- Setup Signals
- Risk & Trade Management
- Case Studies
- Live Charting & Replay
- Final Thoughts
- Q&A

# Introduction to the Titan Territory Strategy (TTS)

---

- What is the Titan Territory Strategy (TTS)?
  - **Supply and demand-based trading strategy**
  - **Focuses on key price levels** where large institutional participants are most active
- Why do these zones/levels matter?
  - **Institutions, hedge funds, and large traders** leave behind clues in the form of supply and demand (i.e. support and resistance)
  - These areas, called **Titan Territories**, serve as strong areas where price has historically reacted, making them prime locations for high-probability trades
  - They are psychological levels/areas of “**protection**” where larger participants “**defend**” price
  - Market movements are driven by **buying and selling pressure**
  - These areas tell us where major market participants are likely to:
    - **Defend a level** (preventing price from breaking through)
    - **Absorb liquidity** (creating opportunities for reversals or breakouts)
    - **Initiate large moves** (leading to strong trends and momentum trades)
- Key Time Frames to Identify Titan Territories
  - These levels are derived from **higher time frame supply/demand & market structure areas** on the:
    - **Weekly, Daily, 4H, 1H**

# Stock Selection Criteria

---

- Pre-market volume over 500k (preferably over 1M)
- Average daily volume over 1M
- ATR over 3
- Minimum Market Cap > \$2B
- \*Beta > 1
- Price over \$10
- Titan Territory within 1ATR of opening price
- Titan Territory (i.e. level/area selection) on the **Weekly, Daily, 4H, 1H**
  - **TT SD:** Supply drop (price moves down quickly) / Demand spike (price moves up quickly)
  - **TT BOS:** Previous higher high (HH) in an uptrend / lower high (LL) in a downtrend
  - **TT CHoCH:** Change of Character - i.e break of support (HL) / resistance (LH) for a change in trend
- Bonus:
  - Stock has a recent fresh news catalyst (i.e within the last week)
  - R4, R3, S3, & S4 as confluence in the area (i.e. algo participation)

# TT SD: Supply & Demand Zone

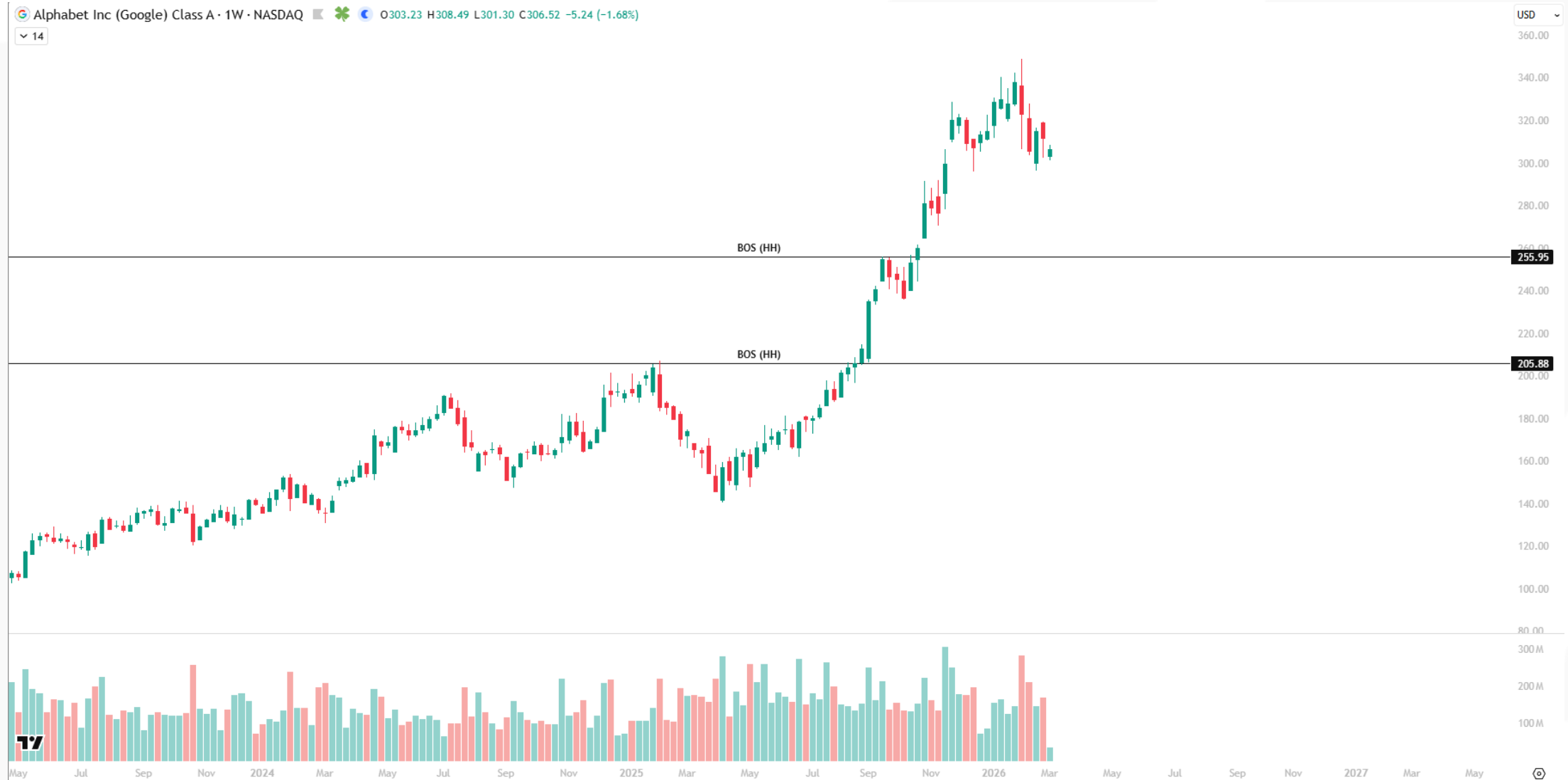
Sandisk Corporation - 4h - NASDAQ ▲ ● O619.08 H619.46 L614.56 C615.51 -3.49 (-0.56%)

14

USD



# TT BOS: Trend Continuation



# TT CHoCH: Trend Change



# 5-min Trend (Intraday View)



# Titan Territory Setup Signals

---

- Volume:
  - The **MOST** important signal
  - Confirms the direction of the trade
  - Short position = selling volume increasing
  - Long position = buying volume increasing
- Order Flow:
  - BID x ASK size imbalance / L2 Liquidity
  - Bookmap / Atlas
  - Volume by Price (Value)
- Candlestick Patterns:
  - 3 Bar Play (Continuation & Reversal)
  - Bullish/Bearish Engulfing
  - Breakout Candle (\*minimum 3 consolidation candles)
  - Pin Bar
  - ABCD

# Volume by Price (Trading View)

## Indicators, metrics, and strategies

Visible Range Volume Profile

PERSONAL

FAVORITES

☆ Favorites

★ Visible Range Volume Profile

### VRVP

Inputs

Style

Visibility

Rows Layout

Number... ▾

Row Size

150

Volume

Up/Down ▾

Value Area Volume

70

### VRVP

Inputs

Style

Visibility

Volume profile

Values

Width (% of the box)

30

Placement

Right ▾

Up Volume

Down Volume

Value Area Up

Value Area Down

VAH

VAL

POC

Developing POC

Developing VA

# Volume by Price (DAS)

Study Configure: Volume By Price (StudyVolumeByPrice)

Copy Export

General

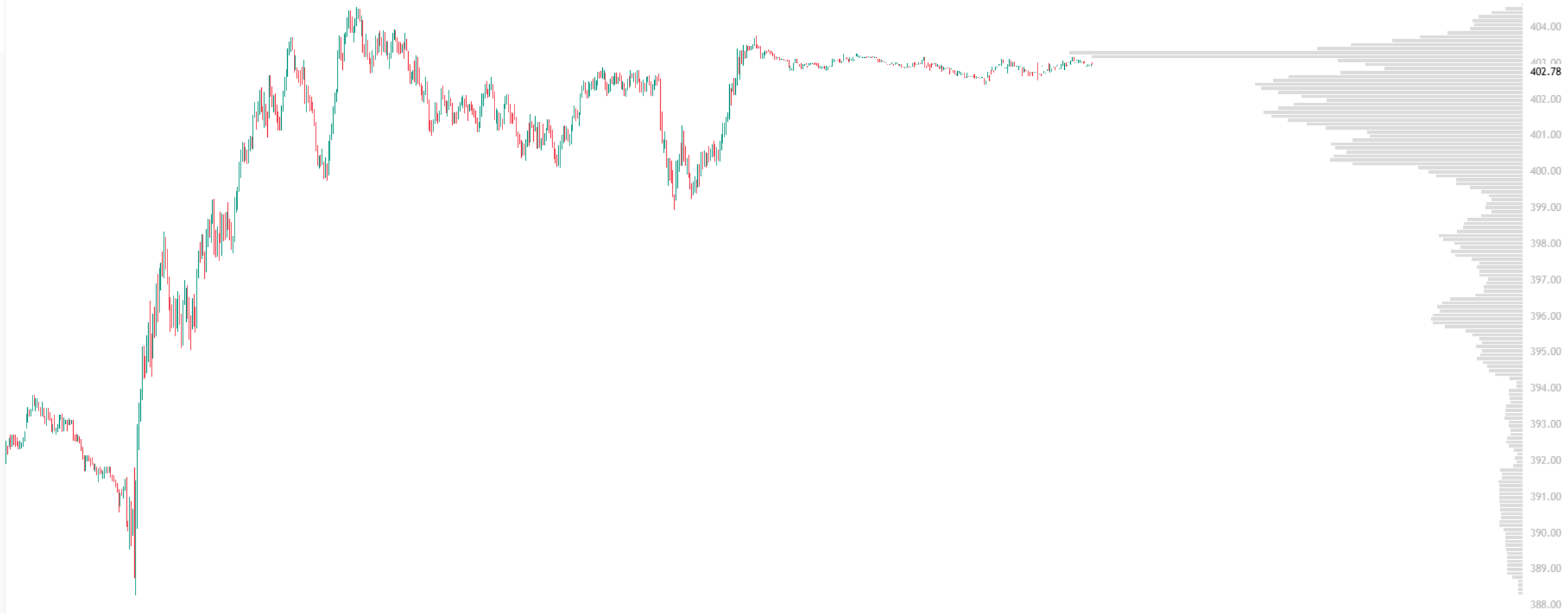
Volume By Price Config Chart Configure

Bar Color	Bar Color	192,192,192	▽
Number of Bars(maximum 50)	50		
Display down volume	<input type="checkbox"/> Enabled <input checked="" type="checkbox"/> Disabled		
Down Volume Color		255,0,0	▽
Transparency	<input type="range"/>		
Draw in daily interval	<input type="checkbox"/> Enabled <input checked="" type="checkbox"/> Disabled		
Volume Area Settings			
Show Point of Control	<input checked="" type="checkbox"/> Enabled <input type="checkbox"/> Disabled		
Point of Control Line Style	<input type="range"/>		
Show Volume Area High	<input type="checkbox"/> Enabled <input checked="" type="checkbox"/> Disabled		
Volume Area High Line Style	<input type="range"/>		
Show Volume Area Low	<input type="checkbox"/> Enabled <input checked="" type="checkbox"/> Disabled		
Volume Area Low Line Style	<input type="range"/>		
Show Volume Area	<input type="checkbox"/> Enabled <input checked="" type="checkbox"/> Disabled		
Volume Area %	70		
Volume Area Transparency	<input type="range"/>		
Percentage of chart area width taken	50		

Tesla, Inc. - 1 · NASDAQ O 403.00 H 403.00 L 402.94 C 402.95 0.00 (0.00%)

USD

14



TV

08:30 09:00 09:30 10:00 10:30 11:00 11:30 12:00 12:30 13:00 13:30 14:00 14:30 15:00 15:30 16:00 16:30 17:00 18:00 19:00 3 04:30 05:00 05:30 06:00 06:30 07:00 07:30 08:00 08:30

1D 5D 1M 3M 6M YTD 1Y 5Y All

20:23:04 UTC-5 ETH ADJ



# Risk & Trade Management

---

## Entry:

- At or near Titan Territory level/zone (TT SD, TT BOS, TT CHoCH)
- 5-min key level (5-min BOS, 5min CHoCH)

## Stop Loss:

- Above/below intraday value (i.e. largest volume by price area)
- Above/below pattern + volume signal

## Target(s):

- Main Titan Territory level/zone (use zone edges when trading TT SD)
- 5-min BOS, 5min CHoCH
- Nearest TT level/zone on expansion
- Intraday support/resistance created by Order Flow (i.e. Volume by Price)

# Case Studies: PLTR – Big Picture



# Case Studies: PLTR - Trade Execution



# Case Studies: CRWV – Big Picture



# Case Studies: CRWV – Trade Execution



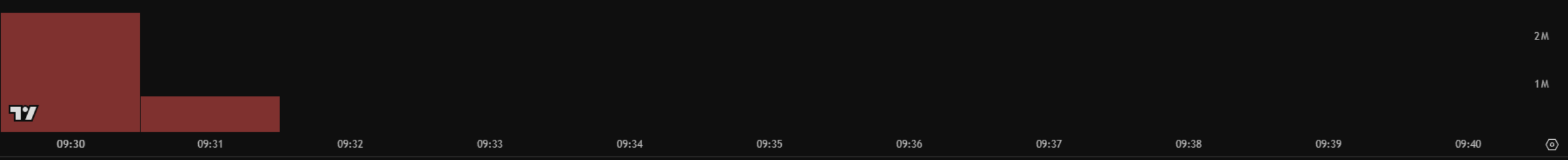
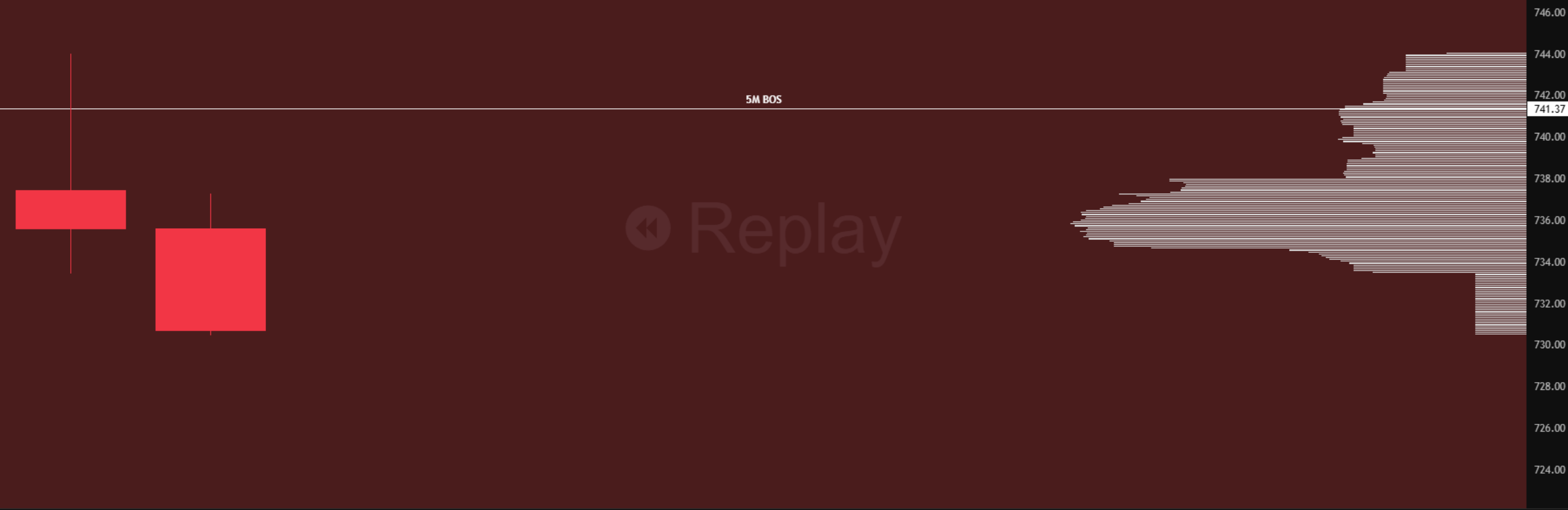
# Case Studies: META – Big Picture



# Case Studies: META – Trade Execution

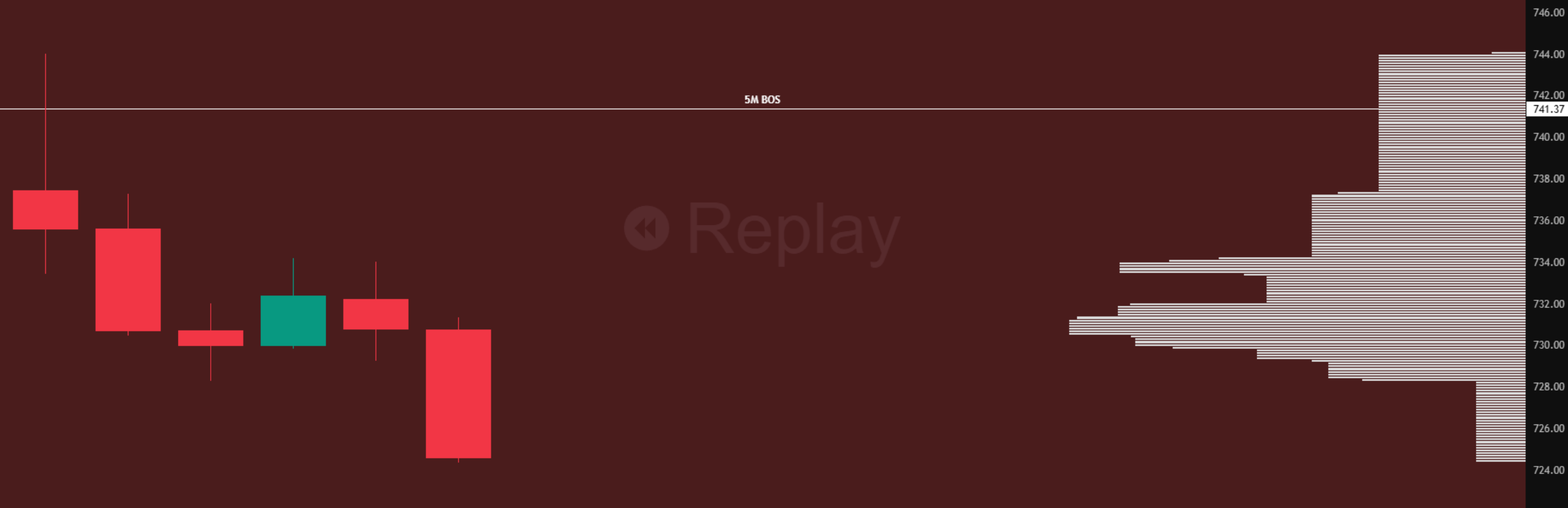


14

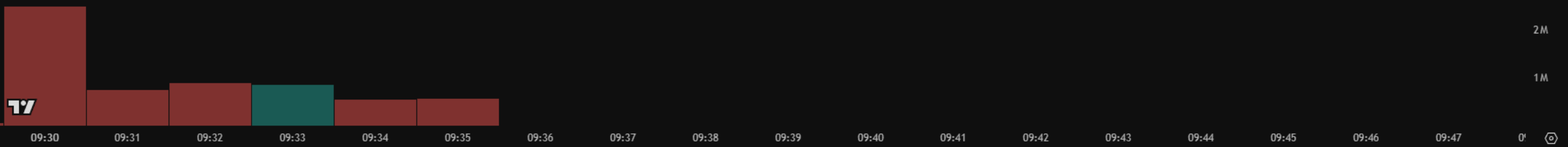


⏪ Select bar | 
 ▶ | 
 ⏩ | 
 0.5x | 
 1m | 
 ⏸

14 ▾



746.00  
744.00  
742.00  
741.37  
740.00  
738.00  
736.00  
734.00  
732.00  
730.00  
728.00  
726.00  
724.00



2M  
1M

09:30 09:31 09:32 09:33 09:34 09:35 09:36 09:37 09:38 09:39 09:40 09:41 09:42 09:43 09:44 09:45 09:46 09:47 0'

⏪ Select bar ▾ | ⏩ 0.5x 1m | ⏸

1D 5D 1M 3M 6M YTD 1Y 5Y All 📄

20:02:49 UTC-5 ETH | ADJ

# Case Studies: META – Trade Execution



# Live Charting & Replay:

**MDB & CRCL**  
**March 3, 2026**

# Stock Selection Criteria Check

- Pre-market volume over 500k (preferably over 1M)
- Average daily volume over 1M
- ATR over 3
- Minimum Market Cap > \$2B
- \*Beta > 1
- Price over \$10
- Titan Territory within 1ATR of opening price
- Titan Territory (i.e. level/area selection) on the **Weekly, Daily, 4H, 1H**
  - **TT SD:** Supply drop (price moves down quickly) / Demand spike (price moves up quickly)
  - **TT BOS:** Previous higher high (HH) in an uptrend / lower high (LL) in a downtrend
  - **TT CHoCH:** Change of Character - i.e break of support (HL) / resistance (LH) for a change in trend
- Bonus:
  - Stock has a recent fresh news catalyst (i.e within the last week)
  - R4, R3, S3, & S4 as confluence in the area (i.e. algo participation)

## MongoDB, Inc (MDB)

PM Vol: > 500k

Average Daily Volume: 1.65M

ATR: \$27.52

Market Cap: \$20.57B

Beta: 1.5

Price: ~ \$240

TT: \$3 from opening price

Bonus: Earnings catalyst

# Stock Selection Criteria Check

- Pre-market volume over 500k (preferably over 1M)
- Average daily volume over 1M
- ATR over 3
- Minimum Market Cap > \$2B
- \*Beta > 1
- Price over \$10
- Titan Territory within 1ATR of opening price
- Titan Territory (i.e. level/area selection) on the **Weekly, Daily, 4H, 1H**
  - **TT SD:** Supply drop (price moves down quickly) / Demand spike (price moves up quickly)
  - **TT BOS:** Previous higher high (HH) in an uptrend / lower high (LL) in a downtrend
  - **TT CHoCH:** Change of Character - i.e break of support (HL) / resistance (LH) for a change in trend
- Bonus:
  - Stock has a recent fresh news catalyst (i.e within the last week)
  - R4, R3, S3, & S4 as confluence in the area (i.e. algo participation)

## Circle Internet Group, Inc. (CRCL)

PM Vol: > 500k

Average Daily Volume: 12.68M

ATR: \$7.29

Market Cap: \$23.43B

Beta: 0.65

Price: ~ \$91

TT: \$0.20 from opening price

Bonus: Earnings catalyst, S3

# Final Thoughts

---

- Choose levels/areas that stand out (i.e. don't hunt for a level – if it's not there, move on).
- Zones & levels with more volume signal more buyer/seller participation.
- Levels are meant to be traded as “areas”. Ideally the trade sets up close to the level/zone. However, once price nears the level, begin looking for setup criteria (i.e. volume signals, patterns, order flow).
- Patterns can be played on any time frame, whichever time frame is chosen needs to be the same time frame used for the stop loss. (i.e. if pattern sets up on a 5-minute chart, use the 5-minute chart for the stop loss)
- Keep in mind the overall bigger picture sentiment of both the market and the selected stock - i.e. weakness, look for short setups / strength, look for long setups.



megan@bearbulltraders.com



meganmarlow.com