



Big Kahua Short Strategy: *Identifying High Probability Short Setups*

PRESENTED BY:

Mike B.

DISCLAIMER

BearBullTraders.com employees, contractors, shareholders and affiliates, are **NOT an investment advisory service, a registered investment advisor or a broker-dealer** and does not undertake to advise clients on which securities they should buy or sell for themselves.

You understand that **NO content published as part of the Bear Bull Trading Room and its Website constitutes a recommendation** that any particular investment, security, portfolio of securities, transaction or investment strategy is suitable for any specific person.

You further understand that **none of the creators or providers of our Services or their affiliates will advise you personally** concerning the nature, potential, value or suitability of any particular investment, security, portfolio of securities, transaction, investment strategy or other matter.

Mike Baehr

- History Prior to Trading:
 - 23 Years in United State Marine Corps
 - Curriculum Developer
 - BA in Accounting
 - MS in Forensic Accounting
- Trading History:
 - Started Trading in 2008
 - Began Day Trading in 2018
 - Join Bear Bull Traders in 2020
- Trading Strategies:
 - Break High of Day
 - **Failed High of Day Break**
- Hobbies:
 - Volunteer in the Local Community
 - Traveling
 - Running



Overview

- Philosophy of the Trade
- Stock Selection
- Setup Identification
- Trade Execution
- Consideration Notes
- Examples



Philosophy of the Trade

- Identify Big Sellers on Higher Time Frames
- Looking for High Probability Rejection Areas
- Looking to Trade with Big Kahua's of the Market
- Volume is Key to Identifying the False Breakout
- Tight Stops with High Reward Targets



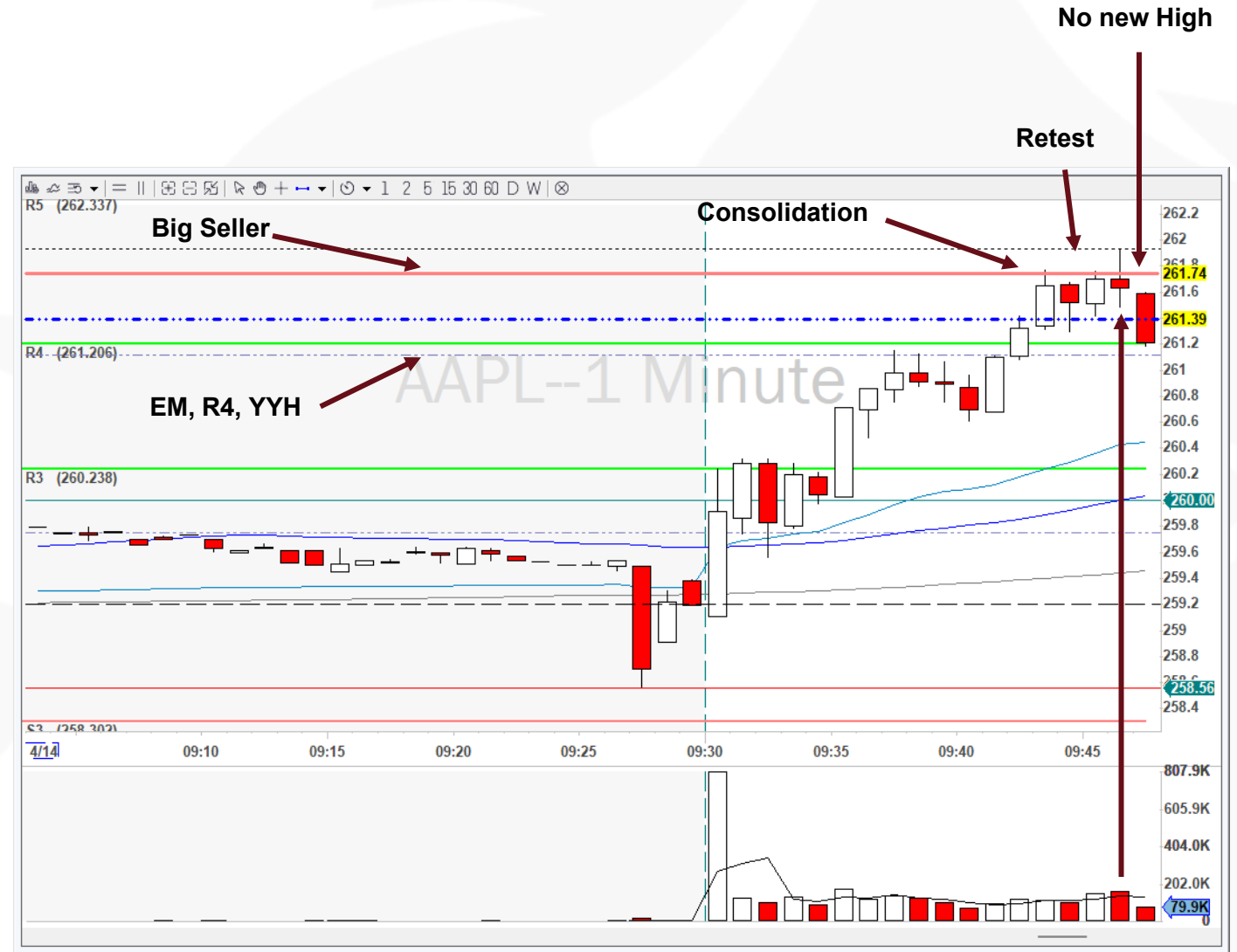
Stock Selection

- Identify Big Seller and Big Buyers on
 - 60-Minute Chart
 - 30-Minute Chart
 - 15-Minute Chart
- Identify Weekly and Daily Expected Move (EM)
- Identify Structure of the Chart
 - **Direction of Trend**
 - **Range**
- Set Price Alerts
 - Big Seller to align with another significant level (EM, PM, D)



Setup Identification

- Time: 0950 – 1250
- Indicators
 - Big Seller on 60-Minute Chart
 - Significant Level Near the Big Seller
 - Consolidating at Under the Big Seller
- Confirmations
 - Retested the Big Seller
 - New High Set on Decreasing Volume
 - New High Set on Volume Spike
 - Next Candle Fails to Make New High

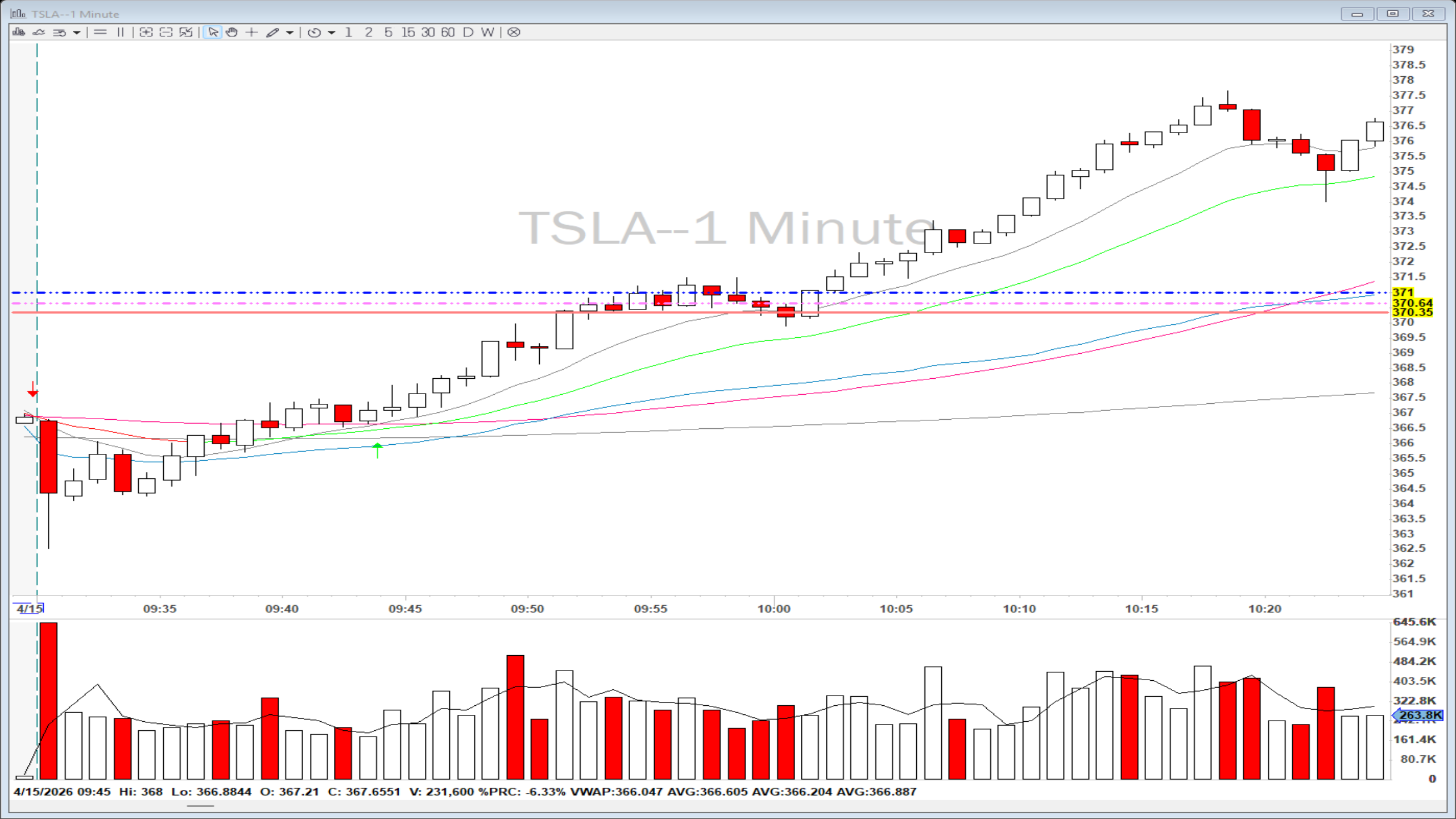


New on Volume Spike

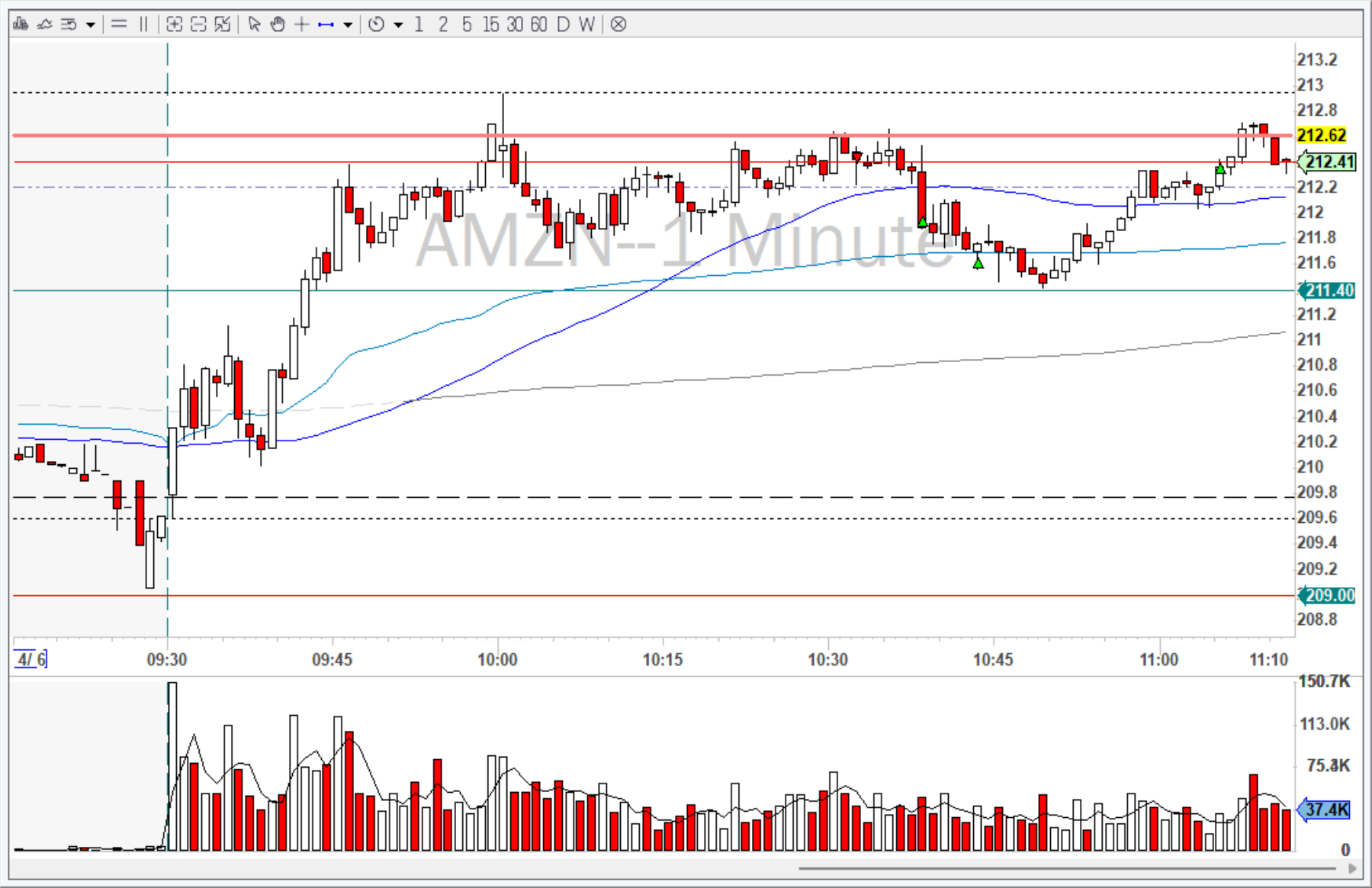
Trade Execution

- Entry Signal
 - New 1-Minute Low Below the Big Seller
- Stop Loss:
 - High of Day + Spread
- Targets:
 - 1st Partial: 50 SMA
 - 2nd Partial: VWAP
 - 3rd Partial: Big Buyer
 - All Out: Expected Move





Examples \$AMZN Apr 6



Examples \$GOOGL Apr 8



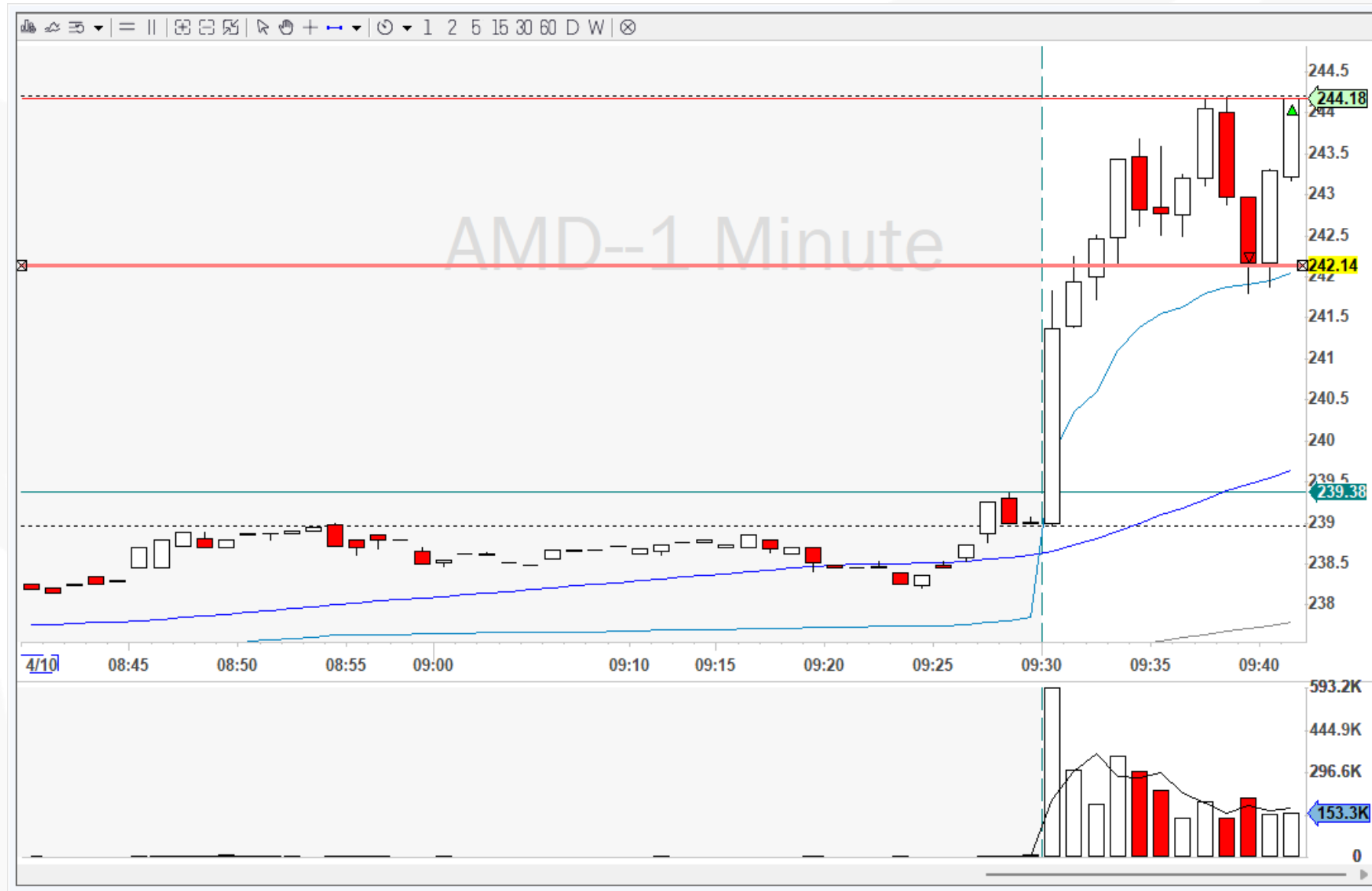
Examples \$AMD Apr 9



Examples \$META Apr 10



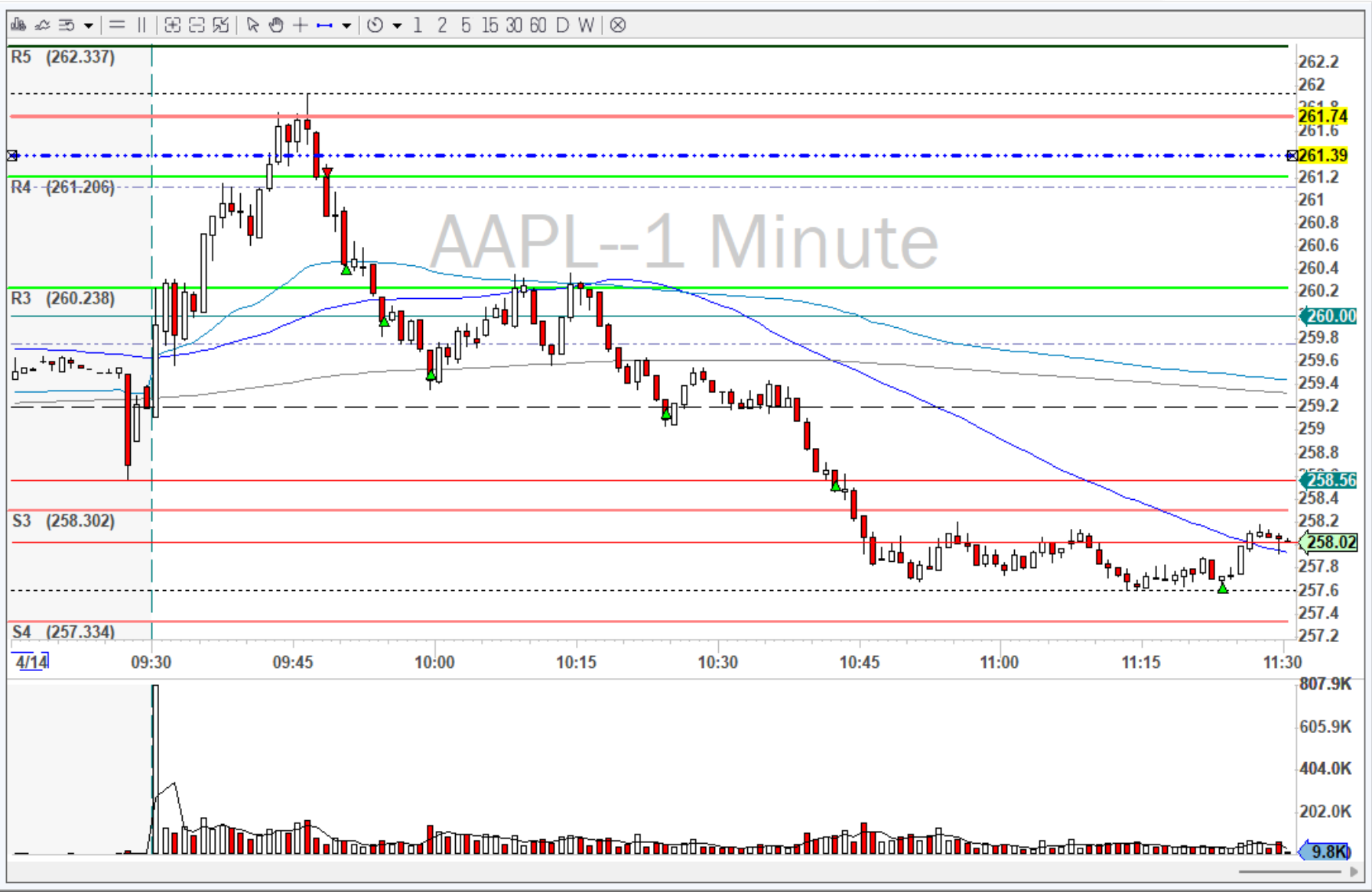
Examples \$AMD Apr 10 Failed



Examples \$AMD Apr 10



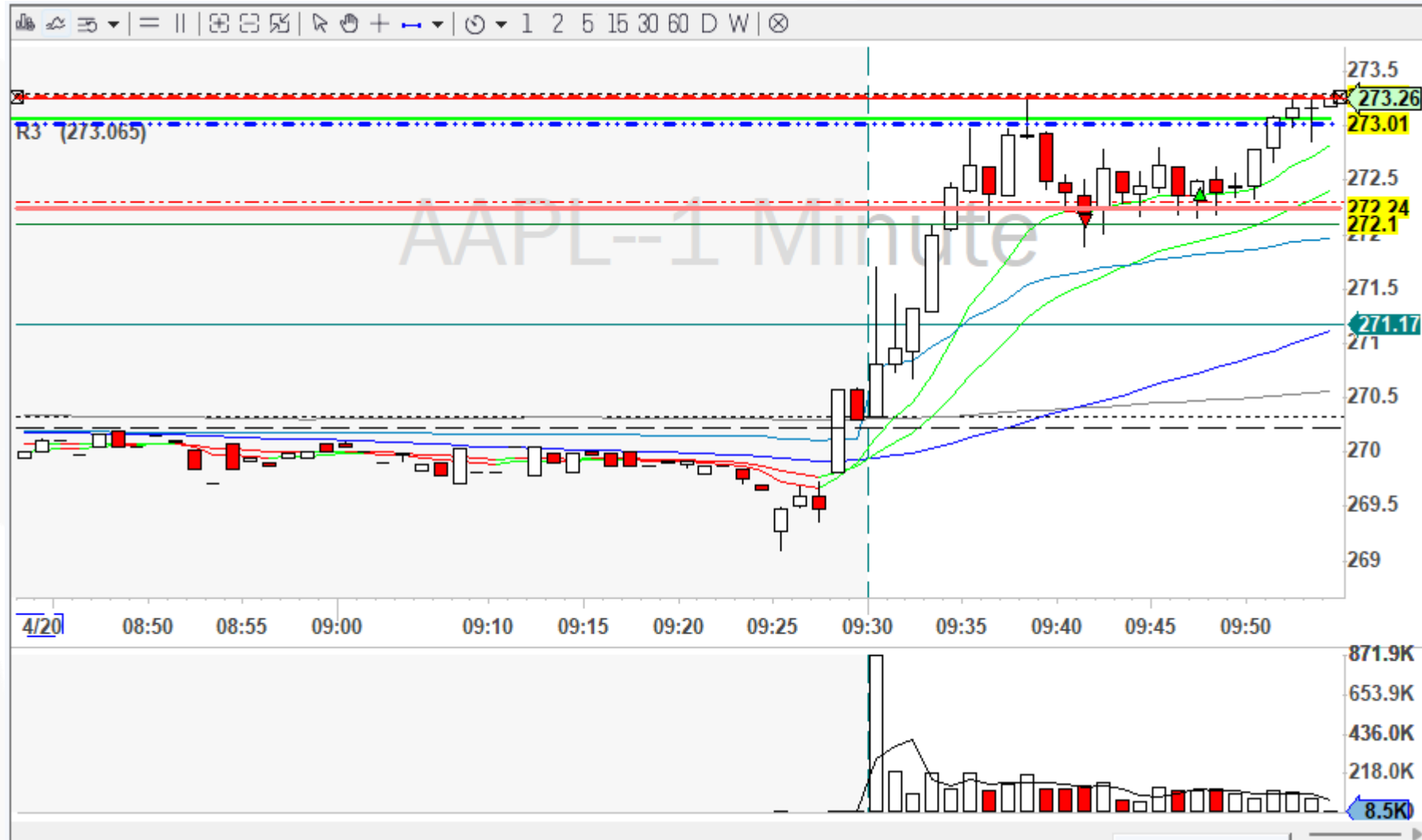
Examples \$AAPL Apr 14



Examples \$TSLA Apr 14



Example \$AAPL 4/20 Failed



Examples \$AAPL Apr 14

